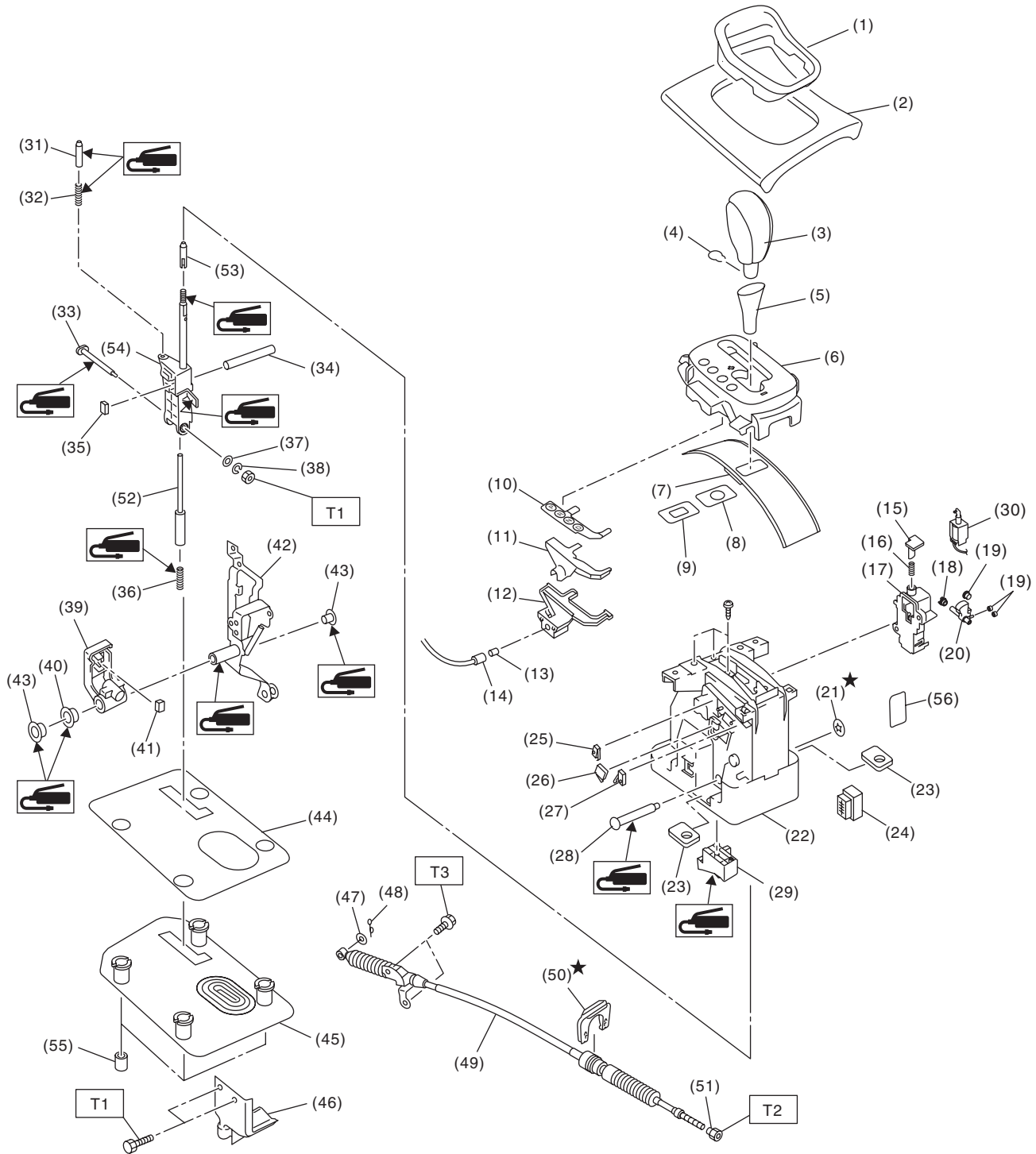


### 1. General Description

#### A: COMPONENT

##### 1. AT SELECT LEVER



# General Description

## CONTROL SYSTEMS

(1) Ring indicator	(22) Base ASSY	(43) Bushing
(2) Front cover	(23) Spacer	(44) Dust cover bracket
(3) Grip ASSY	(24) Harness connector	(45) Dust cover
(4) Grip pin	(25) Shift-up switch	(46) Cable bracket
(5) Grip cover	(26) "P" range switch	(47) Washer
(6) Indicator ASSY	(27) Shift-down switch	(48) Cotter pin
(7) Shift blind	(28) Shaft	(49) Select cable
(8) Blind A	(29) Detent check block	(50) Clamp
(9) Blind B	(30) Solenoid unit	(51) Adjusting nut A
(10) Position plate	(31) Check sheet pole	(52) Button rod
(11) Plate light guide	(32) Spring	(53) Pusher
(12) Valve case	(33) Select shaft	(54) Selector arm ASSY
(13) Indicator bulb	(34) Shift position pin	(55) Spacer
(14) Valve harness	(35) Shift button switch	(56) Sheet
(15) Release rod	(36) Spring	
(16) Spring	(37) Washer	
(17) Lock lever bracket	(38) Spring washer	
(18) Lock lever bushing	(39) Tube cross plate	
(19) Bushing	(40) Bushing	
(20) Lock lever	(41) Mode change switch	
(21) Clamp	(42) Arm ASSY	

---

**Tightening torque: N·m (kgf-m, ft-lb)**

**T1: 5.1 (0.5, 3.8)**

**T2: 7.5 (0.8, 5.5)**

**T3: 18 (1.8, 13.3)**

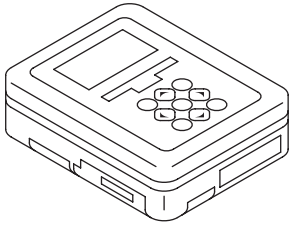
---

## General Description

### CONTROL SYSTEMS

## B: PREPARATION TOOL

### 1. SPECIAL TOOL

ILLUSTRATION	TOOL NUMBER	DESCRIPTION	REMARKS
 ST1B022XU0	1B022XU0	SUBARU SELECT MONITOR III KIT	Troubleshooting for the electrical system.

## C: CAUTION

- Wear appropriate work clothing, including a cap, protective goggles and protective shoes when performing any work.
- Remove contamination including dirt and corrosion before removal, installation or disassembly.
- Keep the disassembled parts in order and protect them from dust and dirt.
- Before removal, installation or disassembly, be sure to clarify the failure. Avoid unnecessary removal, installation, disassembly and replacement.
- Use SUBARU genuine fluid, grease etc. or equivalent. Do not mix fluid, grease, etc. of different grades or manufacturers.
- Be sure to tighten fasteners including bolts and nuts to the specified torque.
- Place shop jacks or rigid racks at the specified points.
- Apply grease onto sliding or revolving surfaces before installation.
- Before installing the O-ring or snap ring, apply a sufficient amount of fluid to avoid damage and deformation.
- Before securing a part in a vise, place cushioning material such as wood blocks, aluminum plate or cloth between the part and the vise.
- Before disconnecting electrical connectors, be sure to disconnect the negative terminal from battery.