

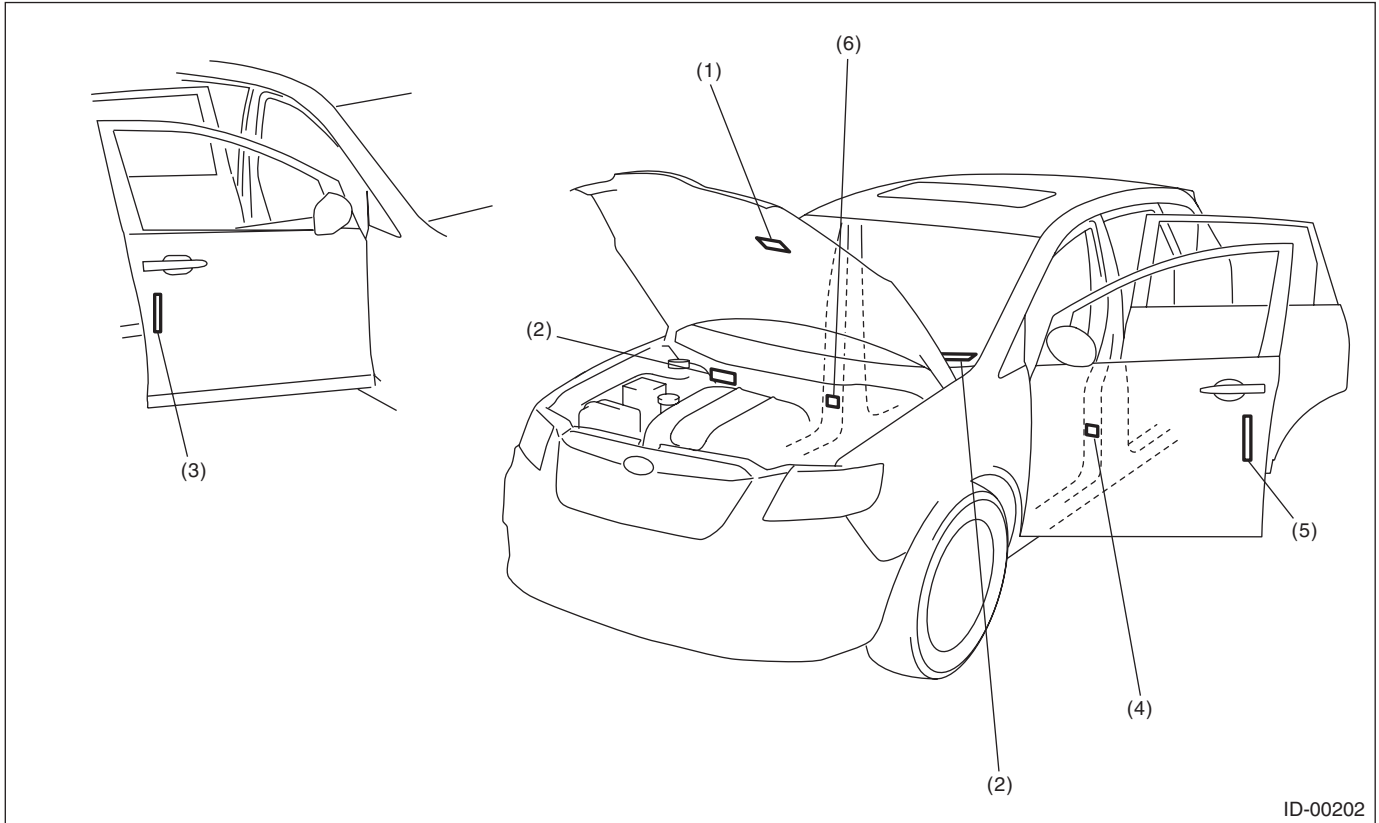
1. Identification

A: IDENTIFICATION

1. IDENTIFICATION NUMBER AND LABEL LOCATIONS

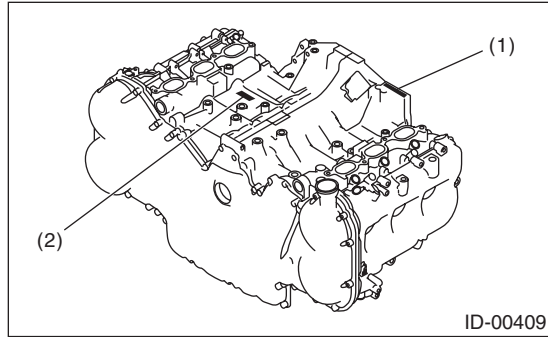
The V.I.N. (Vehicle Identification Numbers) is used to classify the vehicle.

- Positioning of the plate label for identification



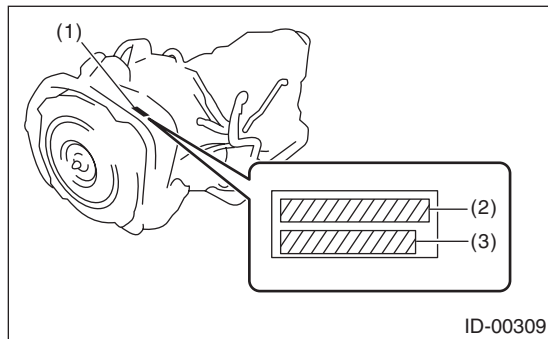
- | | | |
|--|--|-----------------------|
| (1) Emission control label | (4) Tire inflation pressure label (driver's side) | (6) Radio noise label |
| (2) Vehicle identification number (V.I.N.) | (5) FMVSS label (U.S. model)
CMVSS label (Canada model) | |
| (3) Model number label | | |

• Engine



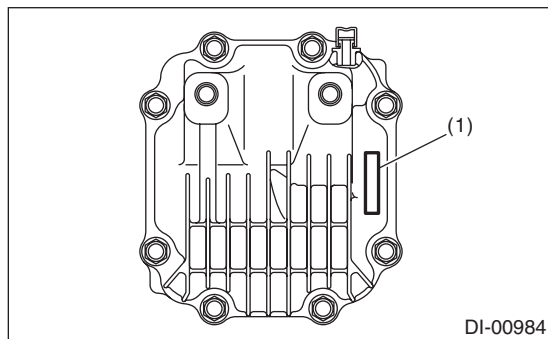
- (1) Engine serial number (punch mark)
- (2) Engine type (casting) crankcase upper side

• Automatic transmission



- (1) Label
- (2) AT type
- (3) Transmission serial No.

• Rear differential



- (1) Identification paint

Identification

IDENTIFICATION

- Model number label

FUJI HEAVY INDUSTRIES LTD.			
VIN	*****		
Applied Model	*****	Option Code	****
Modèle Concerné	*****	Code d'option	****
Trim Code	***		
Code de garniture	***		
Color Code	***	Engine Type	*****
Code de couleur	***	Modèle de moteur	*****
Transmission Type	*****		
Modèle de boîtes vitesse	*****		

ID-00374

- FMVSS label (U.S. model)

MFD BY FUJI HEAVY INDUSTRIES LTD.				DATE :	
GVWR :	LB(KG)			
GAWR : F	LB(KG) WITH	TIRES.	RIMS. AT	KPA(PSI)COLD
GAWR : R	LB(KG) WITH	TIRES.	RIMS. AT	KPA(PSI)COLD
THIS VEHICLE CONFORMS TO ALL APPLICABLE FEDERAL MOTOR VEHICLE SAFETY AND THEFT PREVENTION STANDARDS IN EFFECT ON THE DATE OF MANUFACTURE SHOWN ABOVE.					
VIN : *****			TYPE : MPV		
					
ASSEMBLED BY SIA INC. MADE IN U. S. A					

ID-00373

- **CMVSS label (Canada model)**

GVWR/PNBV		KG	MFD BY FUJI HEAVY INDUSTRIES LTD.		DATE :	
GAWR/PNBE F	KG	WITH	TIRES.	RIMS. AT	KPA(PSI)COLD
GAWR/PNBE R	KG	WITH	TIRES.	RIMS. AT	KPA(PSI)COLD
VIN : *****			TYPE : MPV/VTUM			
						
ASSEMBLED BY SIA INC.		MADE IN U. S. A		ICES/NMB-002		

ID-00376

Identification

IDENTIFICATION

2. MEANING OF V.I.N.

The meaning of the V.I.N. is as follows:

[4S4WX9FDXE4400001]

The starting and ending brackets ([]) are stop marks.

Digits	Code	Meaning	Details
1 — 3	4S4	Manufacturer body area	4S4: MPV
4	W	Car line	W: TRIBECA
5	X	Body type	X: SUV
6	9	Displacement	9: 3.6 L AWD
7	F	Grade	F: 7Pass G: 7Pass Limited H: 7Pass Limited w/NAVI J: 7Pass Limited w/DVD K: 7Pass Limited w/NAVI & DVD
8	D	Restraint system or GVWR Class	D: Class D (GVWR 5001 — 6000 lbs.), manual belt + dual air-bag + side airbag for seat back + curtain airbag for roof
9	X	Check digit	0 — 9 & X
10	E	Model year	E: 2014MY
11	4	Transmission type	4: Full-time AWD 5AT
12 — 17	400001	Serial number	400001 — 599999

3. MODEL NUMBER LABEL

The model number label indicates the type, V.I.N. <Ref. to ID-6, MEANING OF V.I.N., IDENTIFICATION, Identification.>, applied model, option code, trim code, engine type, transmission type and the exterior color code. This information is helpful when placing orders for parts.

WXFJY5U

Digits	Code	Meaning	Details
1	W	Series	W: TRIBECA
2	X	Body type	X: Cross utility vehicle
3	F	Total engine displacement Drive system Suspension system	F: 3.6 L AWD
4	J	Model year	J: 2014MY
5	Y	Destination	Y: U.S.A., Canada
6	5	Grade	5: BASE
7	U	Transmission, fuel feed system	U: DOHC MFI 5AT SS

The engine and transmission type are as follows.

Engine

EZ36DBC7LB

Digits	Code	Meaning	Details
1 and 2	EZ	Engine type symbol	EZ: 6 cylinders
3 and 4	36	Displacement	36: 3.6 L
5	D	Fuel feed device	D: MFI non-turbo (DOHC, H6)
6	B	Exhaust regulations	B: For all states
7	C	Mounted transmission	C: D-5AT
8 — 10	7LB	Detailed specifications	Used when ordering parts. For details, refer to the parts catalog.

Transmission

TG5D9CJDAA

Digits	Code	Meaning	Details
1	T	Transmission	T: Transmission
2	G	Transmission system	G: Full-time AWD 5AT center differential
3 and 4	5D	Transmission classification	5D: 5AT
5	9	Series	9: TRIBECA
6	C	Transmission specifications	C: Full-time AWD direct 5AT with VTD type center differential
7	J	Mounted engine	J: 3.6 L DOHC
8 — 10	DAA	Detailed specifications	Used when ordering parts. For details, refer to the parts catalog.

Rear differential

XB

Identification	Reduction gear ratio	LSD
XB	3.583	None

Identification

IDENTIFICATION

Option

C0AK

Digits	Code	Meaning	Details
1 — 2	C0	Destination	C0: Canada C4: Central and South America U4: U.S.A.
3 — 4	AK	Option equipment	Refer to the option list

• 3-digit number

	A	C	D	E	F	L	N	O	P
Leather seat	—	—	○	○	○	○	○	○	○
Driver seat memory sheet	—	—	○	○	○	○	○	○	○
Seat heater	○	○	○	○	○	○	○	○	○
Sunroof + roof rail	—	○	—	○	○	○	—	—	—
Sunroof + roof rail (silver paint)	—	—	○	—	—	—	—	○	○
HID headlight	—	—	○	—	—	○	—	○	○
Home link	—	○	—	○	○	—	○	○	○
Rear seat entertainment	—	—	○	—	○	○	—	—	○
7-spoke aluminum wheel	—	—	—	—	—	—	—	○	○

• 4-digit number

	C	E	J	K	L	M	N	U	V
Navigation system	—	—	—	—	—	—	○	—	○
Rear view camera + navigation display	—	○	○	○	—	○	○	—	○
Rear view camera + inner mirror with rear view display	—	—	—	—	—	—	—	○	—
High grade audio & speakers	—	—	○	—	—	—	—	—	—
Satellite-compatible + high grade audio & speakers	—	○	—	—	—	—	—	—	—
HK-type audio & speakers	—	—	—	—	—	○	○	—	—
HK-type audio & speakers + XM	○	—	—	—	—	—	—	○	○

RECOMMENDED MATERIALS

RM

	Page
1. Recommended Materials	2

