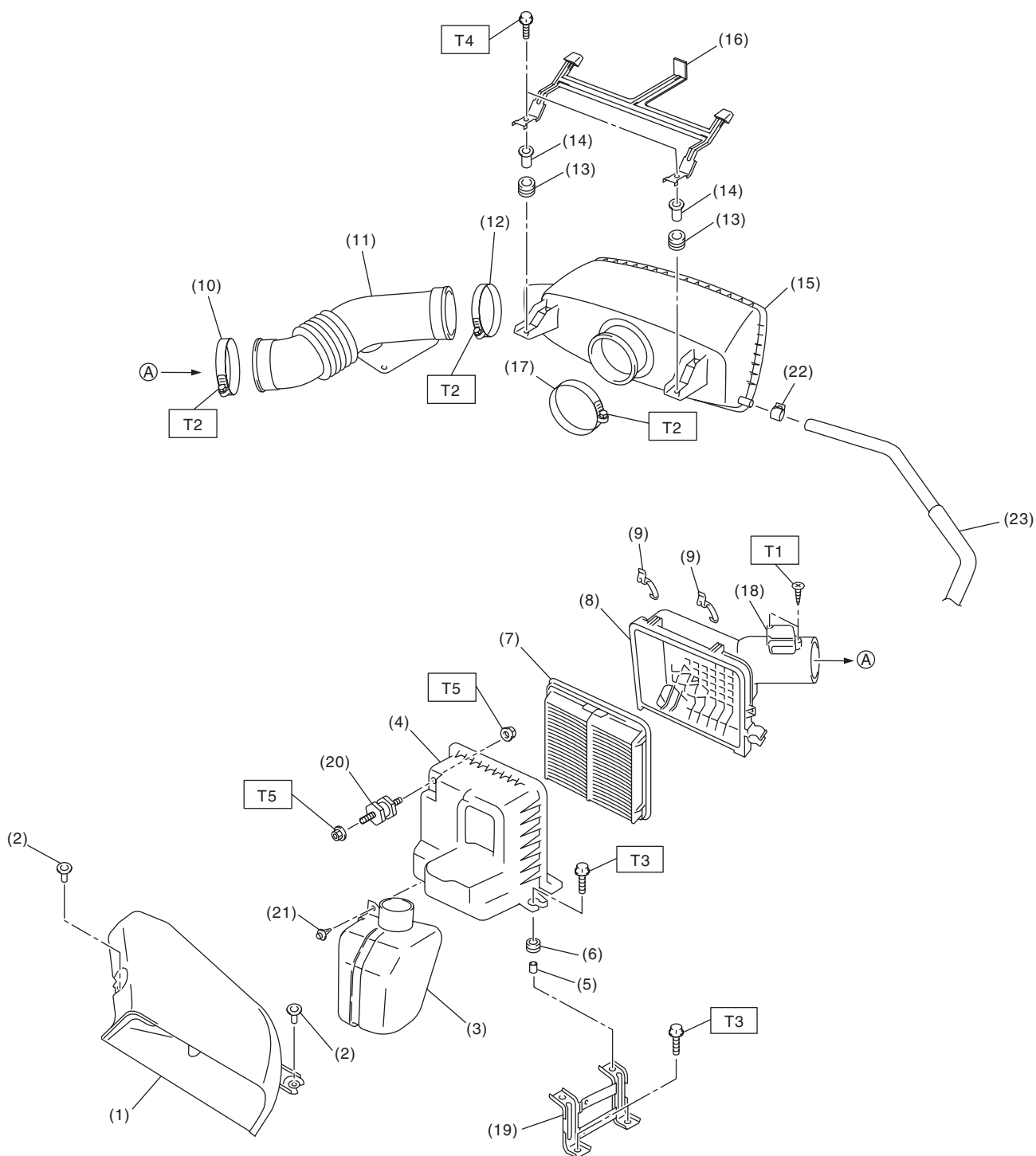


General Description

INTAKE (INDUCTION)

1. General Description

A: COMPONENT



IN-03136

IN(H6DO)-2

General Description

INTAKE (INDUCTION)

(1) Air intake duct	(11) Intake boot	(21) Clip
(2) Clip	(12) Clamp	(22) Clip
(3) Resonator chamber	(13) Cushion	(23) Blow-by hose
(4) Air cleaner case (front)	(14) Spacer	
(5) Spacer	(15) Air intake chamber	Tightening torque: N·m (kgf-m, ft-lb)
(6) Cushion	(16) Collector cover bracket	T1: 1 (0.1, 0.7)
(7) Air cleaner element	(17) Clamp	T2: 3 (0.3, 2.2)
(8) Air cleaner case (rear)	(18) Mass air flow and intake air temperature sensor	T3: 6 (0.6, 4.4)
(9) Clip	(19) Air cleaner bracket	T4: 6.5 (0.7, 4.8)
(10) Clamp	(20) Cushion	T5: 7.5 (0.8, 5.5)

B: CAUTION

- Prior to starting work, pay special attention to the following:
 1. Always wear work clothes, a work cap, and protective shoes. Additionally, wear a helmet, protective goggles, etc. if necessary.
 2. Protect the vehicle using a seat cover, fender cover, etc.
 3. Prepare the service tools, clean cloth, containers to catch grease and oil, etc.
- Vehicle components are extremely hot immediately after driving. Be wary of receiving burns from heated parts.
- When performing a repair, identify the cause of trouble and avoid unnecessary removal, disassembly and replacement.
- Before disconnecting connectors of sensors or units, be sure to disconnect the ground cable from battery.
- Always use the jack-up point when the shop jacks or rigid racks are used to support the vehicle.
- Remove contamination including dirt and corrosion before removal, installation, disassembly or assembly.
- Keep the removed parts in order and protect them from dust and dirt.
- All removed parts, if to be reused, should be reinstalled in the original positions with attention to the correct directions, etc.
- Bolts, nuts and washers should be replaced with new parts as required.
- Be sure to tighten the fasteners including bolts and nuts to the specified torque.