

# Front Wiper Motor and Link

## WIPER AND WASHER SYSTEMS

### 8. Front Wiper Motor and Link

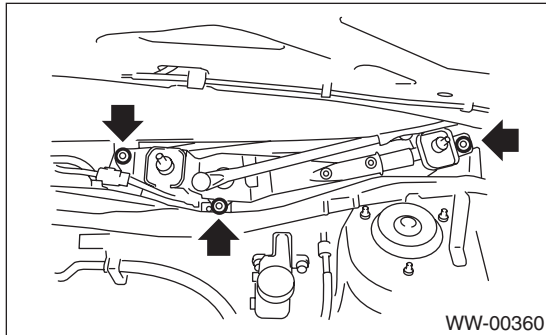
#### A: REMOVAL

- 1) Disconnect the ground cable from battery.
- 2) Remove the cowl panel. <Ref. to EI-30, REMOVAL, Cowl Panel.>

#### CAUTION:

Before removing the cowl panel, use an air blower and nylon brush to sweep gravel from the lower area of the front side of the glass.

- 3) Remove the bolt, and then remove the wiper assembly.
- 4) Disconnect the connector of wiper motor assembly.



#### NOTE:

The wiper motor and wiper link is an assembly part and is not to be disassembled.

#### B: INSTALLATION

Install in the reverse order of removal.

#### CAUTION:

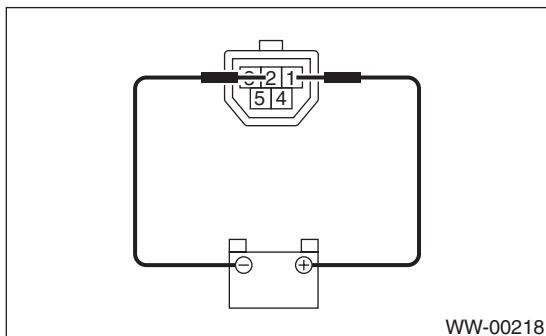
Before installing the windshield glass and cowl panel, make sure there are no gravel in the installing area.

#### Tightening torque:

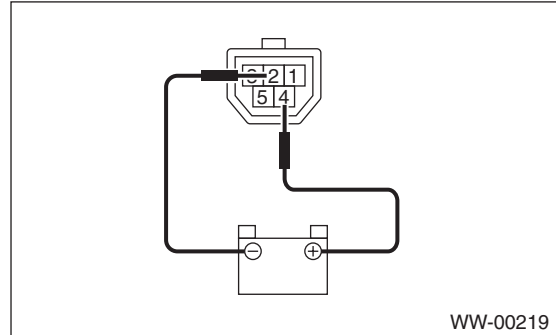
Refer to "COMPONENT" of "General Description". <Ref. to WW-2, FRONT WIPER, COMPONENT, General Description.>

#### C: INSPECTION

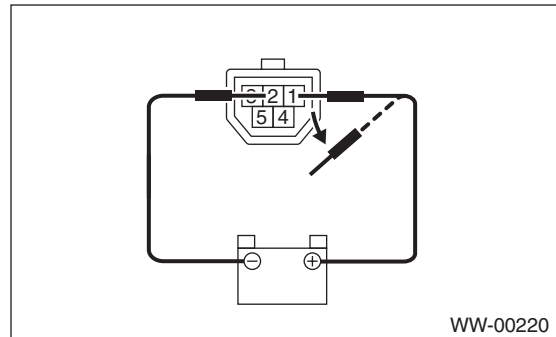
- 1) When the battery is connected to the terminal of connectors, confirm that the wiper motor operates at low speed.



- 2) When the battery is connected to the terminal of connectors, confirm that the wiper motor operates at high speed.



- 3) Connect the battery to terminals of the connector, and remove the terminal connection with wiper motor rotating at low speed, and stop the wiper motor in mid-operation.



- 4) Connect the battery and confirm that the wiper motor stops at the automatic stop position after the wiper motor operates at low speed again.

