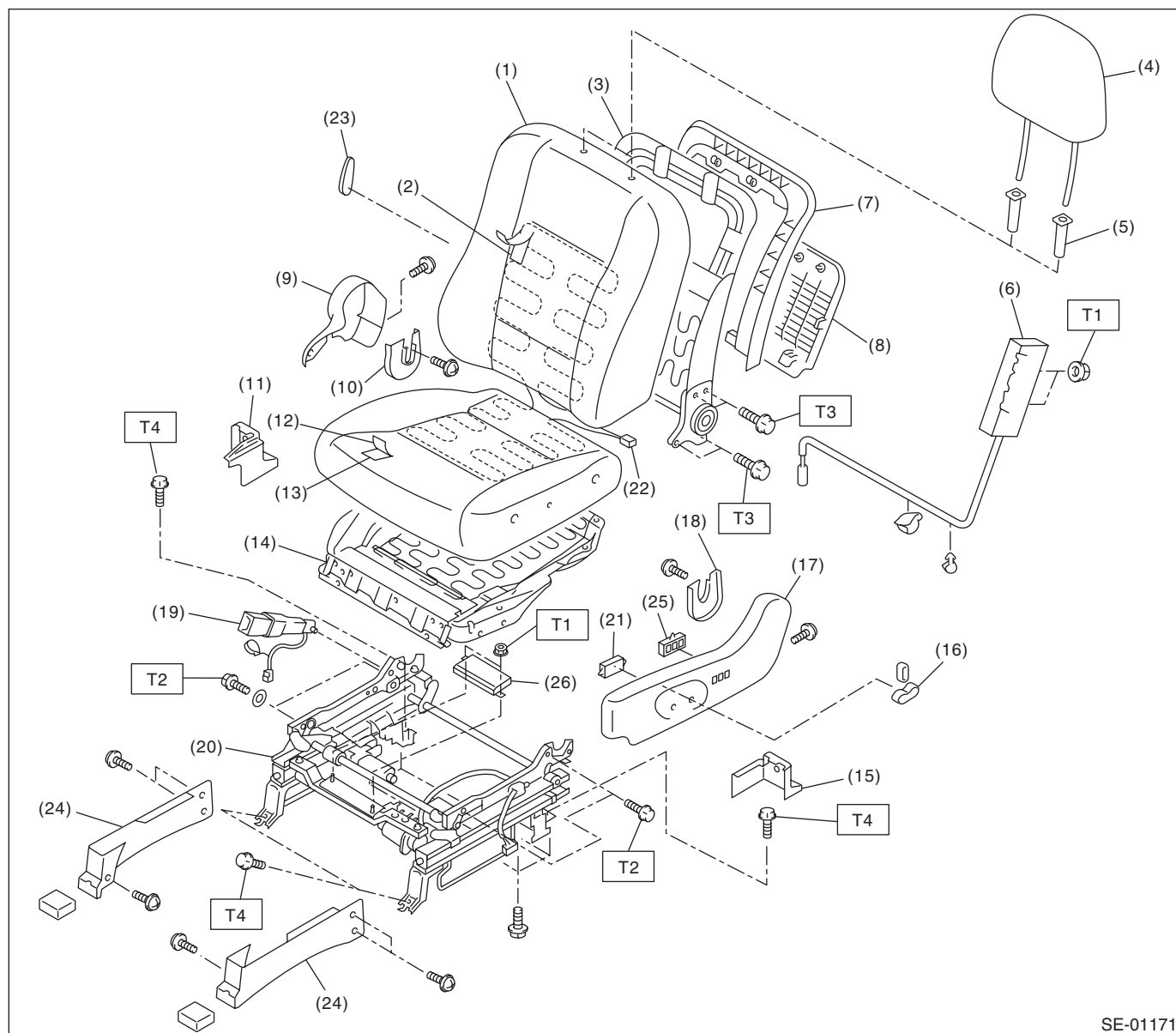


## 1. General Description

### A: COMPONENT

#### 1. FRONT SEAT (DRIVER'S SEAT)



SE-01171

(1) Backrest cover	(12) Seat cushion cover	(23) Lumber support lever
(2) Backrest pad	(13) Seat cushion pad	(24) Slide rail cover
(3) Backrest frame ASSY	(14) Seat cushion frame ASSY	(25) Memory switch (with memory function)
(4) Headrest ASSY	(15) Rear leg cover outside	(26) Memory unit (with memory function)
(5) Headrest lock bushing	(16) Power seat switch knob	
(6) Side airbag module	(17) Seat side cover outside	
(7) Cover frame	(18) Hinge inner cover LH	
(8) Backrest back cover	(19) Inner seat belt ASSY	
(9) Seat side cover inside	(20) Slide rail ASSY	
(10) Hinge inner cover RH	(21) Power seat switch unit	
(11) Rear leg cover inside	(22) Seat heater unit	

#### **Tightening torque: N·m (kgf-m, ft-lb)**

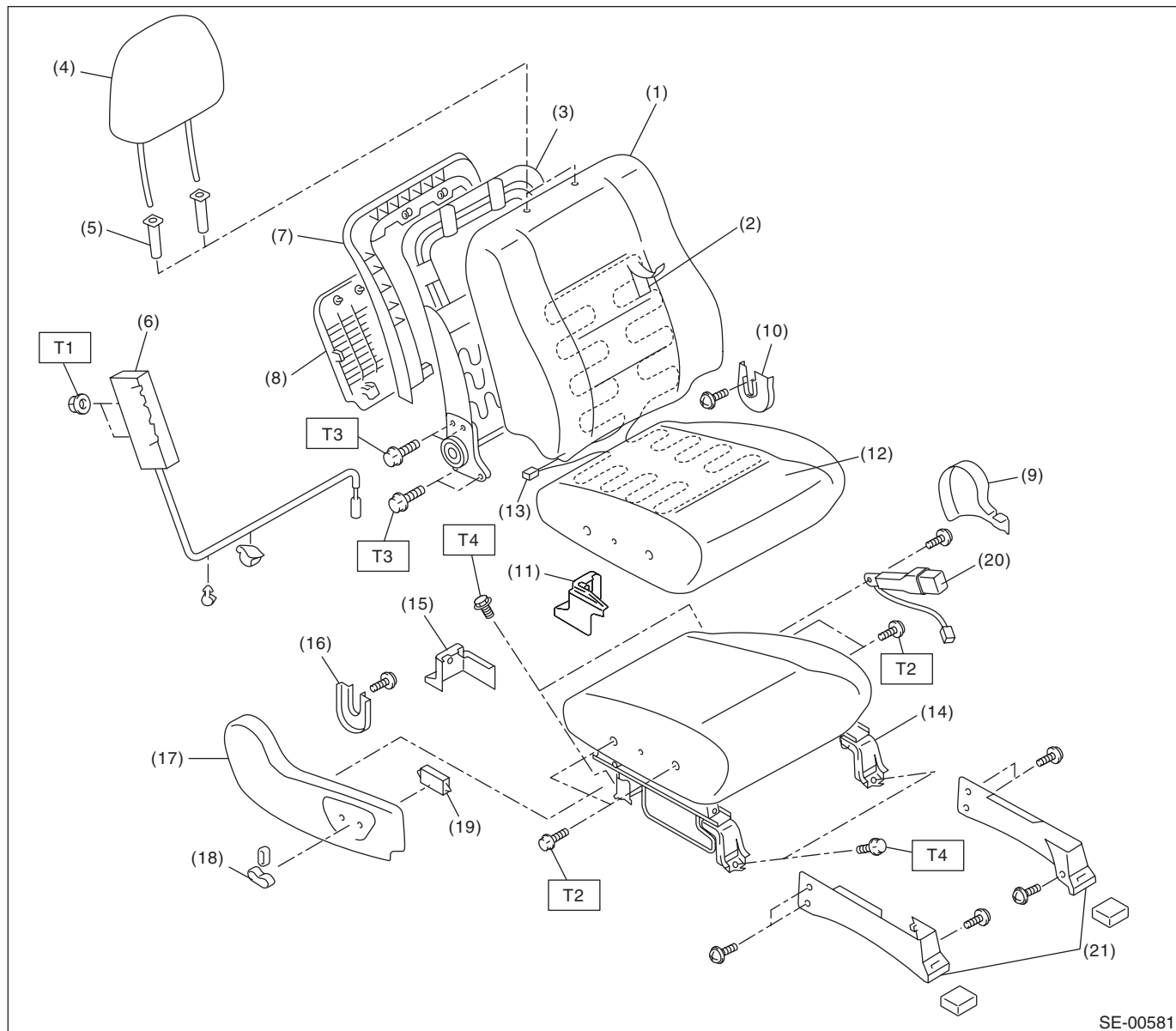
**T1: 6 (0.61, 4.43)**

**T2: 17.6 (1.79, 12.9)**

**T3: 52 (5.30, 38.4)**

**T4: 53 (5.40, 39.0)**

## 2. FRONT SEAT (PASSENGER'S SEAT)



SE-00581

- |                            |                                      |                             |
|----------------------------|--------------------------------------|-----------------------------|
| (1) Backrest cover         | (10) Hinge inner cover LH            | (19) Power seat switch unit |
| (2) Backrest pad           | (11) Rear leg cover inside           | (20) Inner seat belt ASSY   |
| (3) Backrest frame ASSY    | (12) Seat cushion cover              | (21) Slide rail cover       |
| (4) Headrest ASSY          | (13) Seat heater unit                |                             |
| (5) Headrest lock bushing  | (14) Seat cushion pad and frame ASSY |                             |
| (6) Side airbag module     | (15) Rear leg cover outside          |                             |
| (7) Cover frame            | (16) Hinge inner cover RH            |                             |
| (8) Backrest back cover    | (17) Seat side cover outside         |                             |
| (9) Seat side cover inside | (18) Power seat switch knob          |                             |

**Tightening torque: N·m (kgf-m, ft-lb)**

**T1: 6 (0.61, 4.43)**

**T2: 17.6 (1.79, 12.9)**

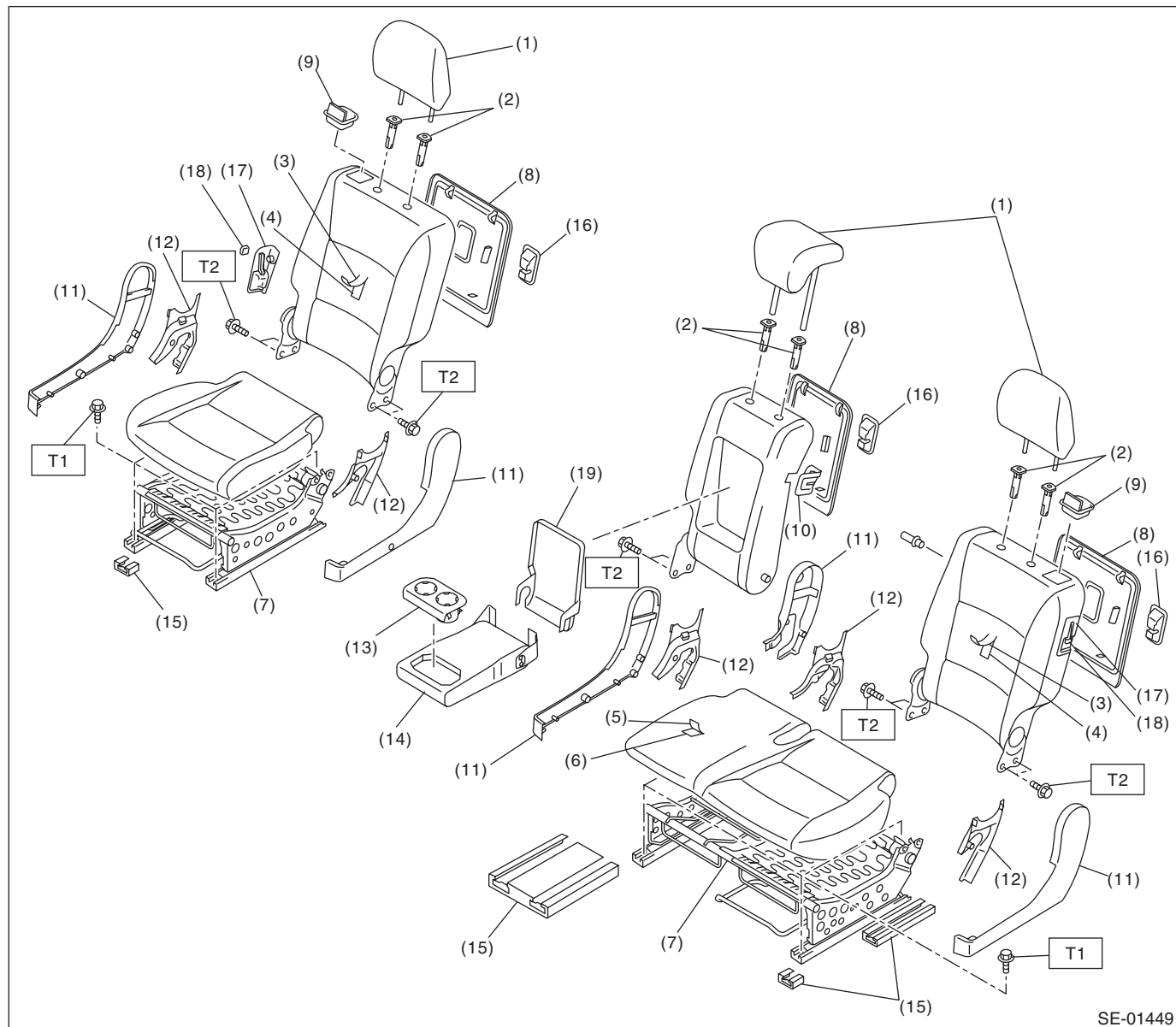
**T3: 52 (5.30, 38.4)**

**T4: 53 (5.40, 39.0)**

# General Description

## SEATS

### 3. SECOND-ROW SEATS



SE-01449

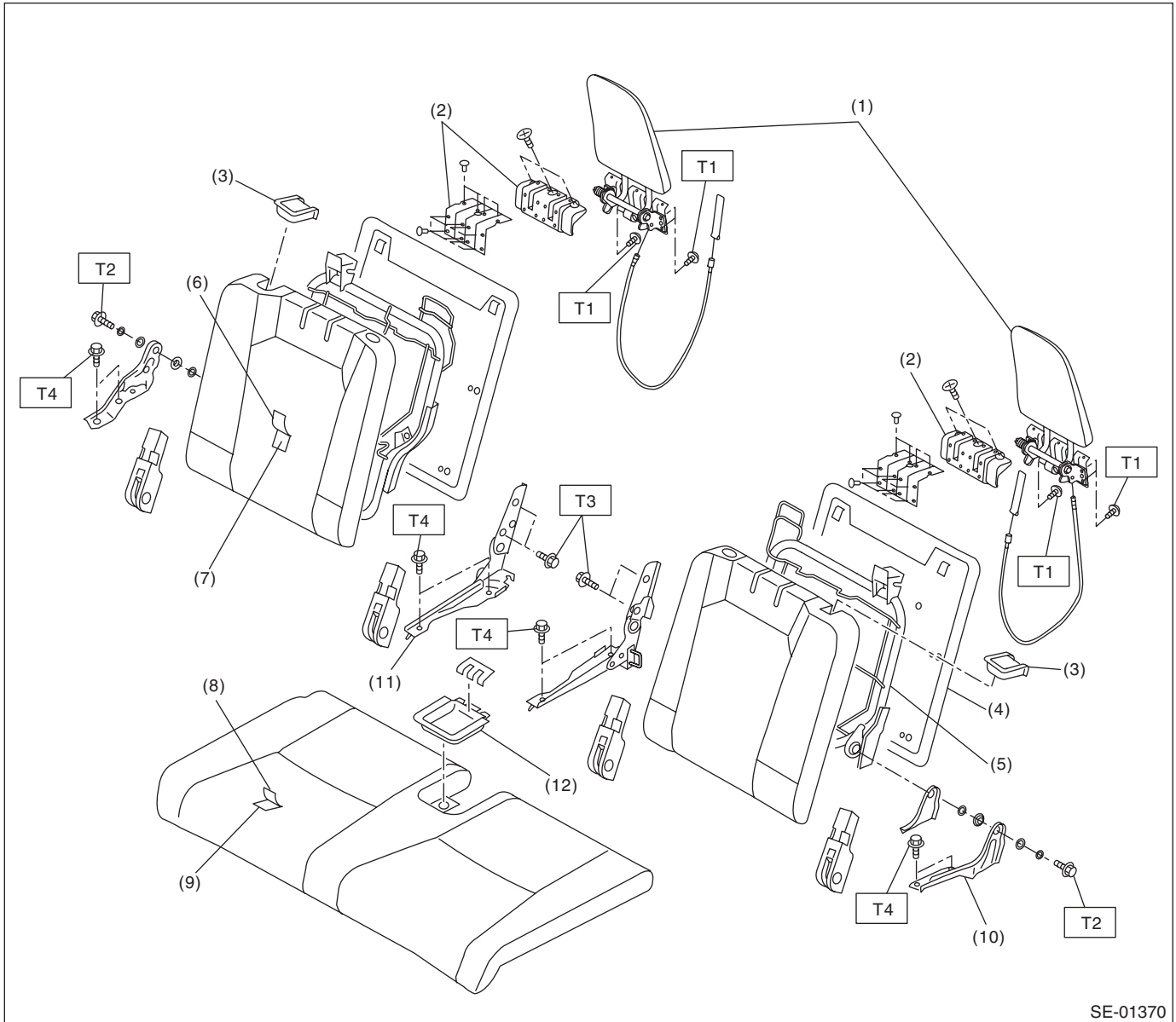
- |                           |                                |                          |
|---------------------------|--------------------------------|--------------------------|
| (1) Headrest              | (9) Holder                     | (17) Walk-in lever cover |
| (2) Headrest lock bushing | (10) Seat backrest latch cover | (18) Walk-in knob        |
| (3) Backrest cover        | (11) Hinge outer cover         | (19) Arm rest board      |
| (4) Backrest pad          | (12) Hinge inner cover         |                          |
| (5) Seat cushion cover    | (13) Cup holder                |                          |
| (6) Seat cushion pad      | (14) Armrest                   |                          |
| (7) Slide rail ASSY       | (15) Slide rail cover          |                          |
| (8) Backrest back cover   | (16) Tether anchor cover       |                          |

**Tightening torque: N·m (kgf·m, ft·lb)**

**T1: 40 (4.08, 29.5)**

**T2: 52 (5.30, 38.4)**

## 4. THIRD-ROW SEATS



SE-01370

- |                          |                        |
|--------------------------|------------------------|
| (1) Headrest             | (7) Backrest pad       |
| (2) Headrest hinge cover | (8) Seat cushion cover |
| (3) Hinge lever ASSY     | (9) Seat cushion pad   |
| (4) Backrest back cover  | (10) Hinge plate       |
| (5) Backrest frame       | (11) Inner hinge ASSY  |
| (6) Backrest cover       | (12) Buckle holder     |

**Tightening torque: N·m (kgf·m, ft·lb)**

**T1: 5.8 (0.59, 4.28)**

**T2: 10 (1.02, 7.38)**

**T3: 52 (5.30, 38.4)**

**T4: 53 (5.40, 39.0)**

## General Description

### SEATS

---

#### B: CAUTION

- If the passenger's seat cushion cover is removed or replaced, make sure to adjust the occupant detection system after installing the seat to the vehicle. <Ref. to OD(diag)-14, SYSTEM CALIBRATION (REZEROING), OPERATION, Subaru Select Monitor.>

If system adjustment is not performed, the occupant detection system may not function properly.

- The occupant detection system (passenger seat only) control module and the occupant detection sensor are fixed to the seat cushion frame. Never remove the occupant detection control module or the pressure sensor from the seat cushion frame.
- Do not replace the passenger's seat cushion pad by itself. Always replace the seat cushion pad and frame assembly as a set. The seat cushion pad and cushion frame are adjusted as a set at the time of manufacture. If cushion pads and cushion frames are combined from those of other vehicles or other sets, the occupant detection system may not operate properly.
- If the passenger's seat cushion cover is removed, make sure to replace the wire on the seat cushion cover side with a new wire.
- When removing the front seat and second-row seat, follow cautions given in the airbag section. <Ref. to AB-4, CAUTION, General Description.>

#### C: NOTE

When removing the front seat of memory-equipped power seats, always perform the initialize operation on the memory function after installing the seat to the vehicle. <Ref. to SE-40, ADJUSTMENT, Power Seat System.>

Failure to do so may cause the abnormal operation of the memory function.

#### D: PREPARATION TOOL

##### 1. GENERAL TOOL

TOOL NAME	REMARKS
Long nose pliers	Used for removing the hog ring.
Hog ring pliers	Used for installing the hog ring.
Circuit tester	Used for checking power seat and seat heater.
TORX® T50	Used for removing/installing inner seat belt assembly and removing/installing/disassembling second-row seats.