

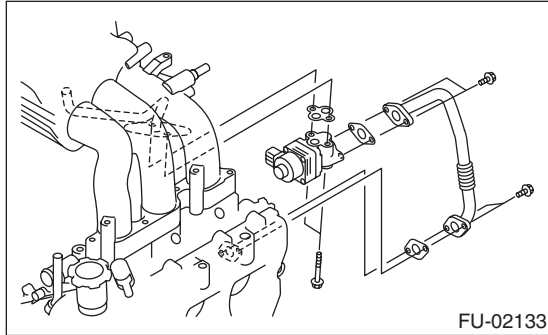
# EGR Valve

## FUEL INJECTION (FUEL SYSTEMS)

### 11.EGR Valve

#### A: REMOVAL

- 1) Remove the collector cover.
- 2) Disconnect the ground cable from battery.
- 3) Remove the air intake chamber. <Ref. to IN(H6DO)-8, REMOVAL, Air Intake Chamber.>
- 4) Remove the starter. <Ref. to SC(H6DO)-6, REMOVAL, Starter.>
- 5) Remove the EGR pipe from EGR valve and cylinder head.
- 6) Remove the EGR valve from intake manifold.



- 7) Disconnect the connector from EGR valve.

#### B: INSTALLATION

Install in the reverse order of removal.

NOTE:

Use a new gasket.

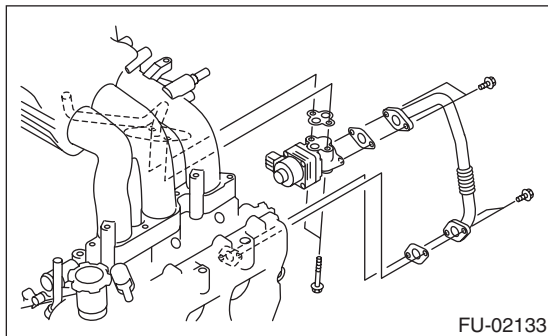
**Tightening torque:**

**EGR valve**

**19 N·m (1.9 kgf-m, 14.0 ft-lb)**

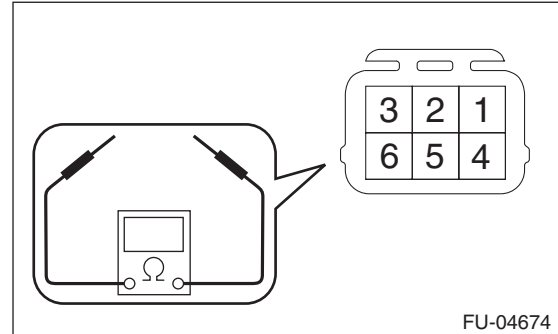
**EGR pipe**

**6.4 N·m (0.7 kgf-m, 4.7 ft-lb)**



#### C: INSPECTION

- 1) Check that the EGR valve has no deformation, cracks or other damages.
- 2) Measure the resistance between EGR valve terminals.



| Terminal No. | Standard |
|--------------|----------|
| 2 and 1      | 22±2 Ω   |
| 2 and 3      | 22±2 Ω   |
| 5 and 4      | 22±2 Ω   |
| 5 and 6      | 22±2 Ω   |