

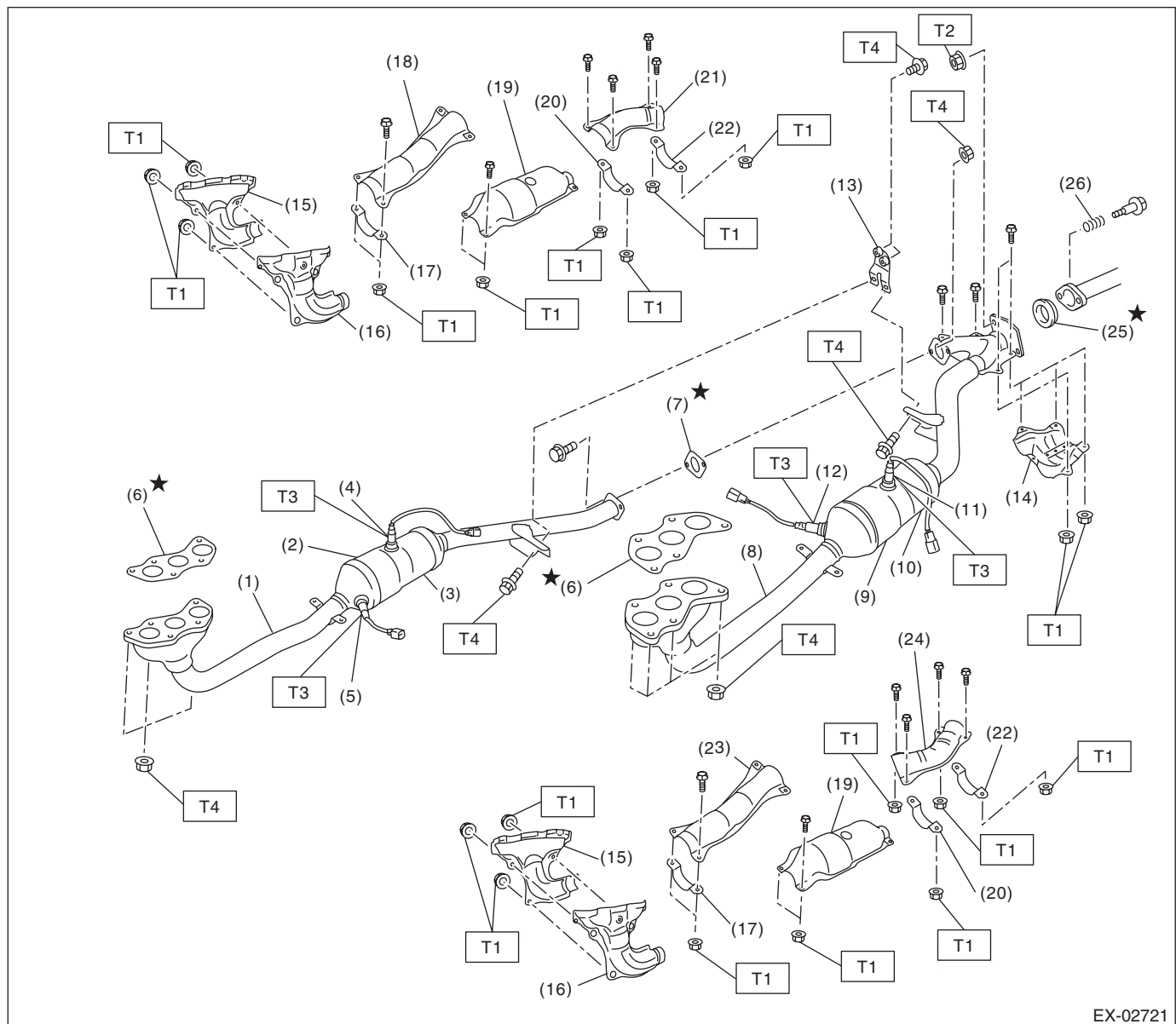
# General Description

## EXHAUST

### 1. General Description

#### A: COMPONENT

##### 1. Front exhaust pipe



EX-02721

- (1) Front exhaust pipe (RH)
- (2) Front catalytic converter (RH)
- (3) Rear catalytic converter (RH)
- (4) Rear oxygen sensor (RH)
- (5) Front oxygen sensor (RH)
- (6) Gasket
- (7) Gasket
- (8) Front exhaust pipe (LH)
- (9) Front catalytic converter (LH)
- (10) Rear catalytic converter (LH)
- (11) Rear oxygen sensor (LH)
- (12) Front oxygen sensor (LH)

- (13) Bracket
- (14) Protector
- (15) Front exhaust pipe cover (RH)
- (16) Front exhaust pipe cover (LH)
- (17) Clamp
- (18) Front exhaust pipe upper cover (RH) (front)
- (19) Catalytic converter upper cover
- (20) Clamp
- (21) Front exhaust pipe upper cover (RH) (rear)
- (22) Clamp

- (23) Front exhaust pipe upper cover (LH) (front)
- (24) Front exhaust pipe upper cover (LH) (rear)
- (25) Gasket
- (26) Spring

#### **Tightening torque: N·m (kgf-m, ft-lb)**

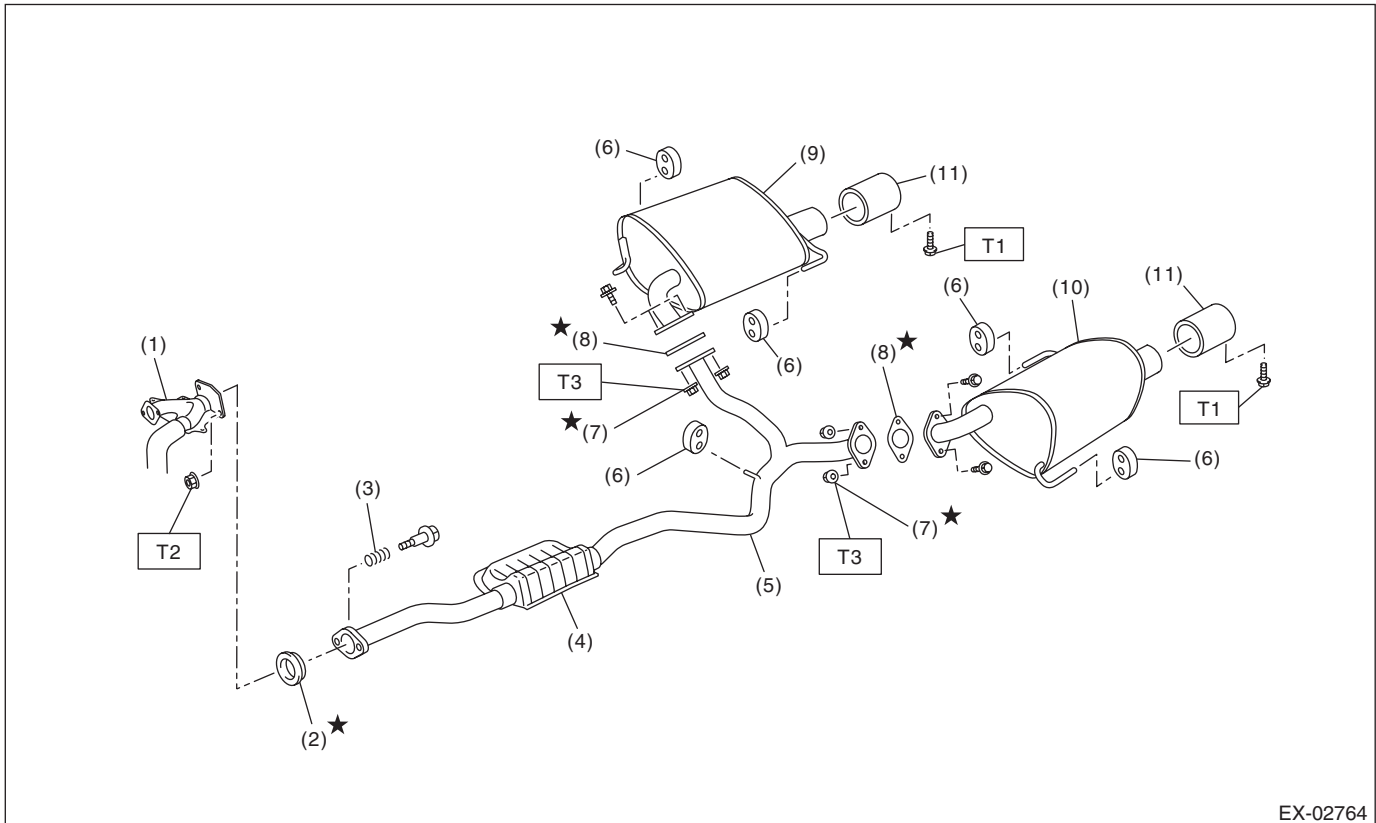
**T1: 13 (1.3, 9.6)**

**T2: 18 (1.8, 13.3)**

**T3: 21 (2.1, 15.5)**

**T4: 30 (3.1, 22.1)**

## 2. Rear exhaust pipe and muffler



EX-02764

- |                             |                      |
|-----------------------------|----------------------|
| (1) Front exhaust pipe (LH) | (7) Self-locking nut |
| (2) Gasket                  | (8) Gasket           |
| (3) Spring                  | (9) Muffler (RH)     |
| (4) Chamber                 | (10) Muffler (LH)    |
| (5) Rear exhaust pipe       | (11) Muffler cutter  |
| (6) Cushion rubber          |                      |

### ***Tightening torque: N·m (kgf-m, ft-lb)***

***T1: 7.5 (0.8, 5.5)***

***T2: 18 (1.8, 13.3)***

***T3: 48 (4.9, 35.4)***

## **B: CAUTION**

- Wear appropriate work clothing, including a cap, protective goggles and protective shoes when performing any work.
- Remove contamination including dirt and corrosion before removal, installation or disassembly.
- Keep the disassembled parts in order and protect them from dust and dirt.
- Before removal, installation or disassembly, be sure to clarify the failure. Avoid unnecessary removal, installation, disassembly and replacement.
- Vehicle components are extremely hot after driving. Be wary of receiving burns from heated parts.
- Be sure to tighten fasteners including bolts and nuts to the specified torque.
- Place shop jacks or rigid racks at the specified points.
- Before disconnecting connectors of sensors or units, be sure to disconnect the ground cable from the battery.
- If any fat adheres to the exhaust pipe, wipe it off. Otherwise a fire may happen.