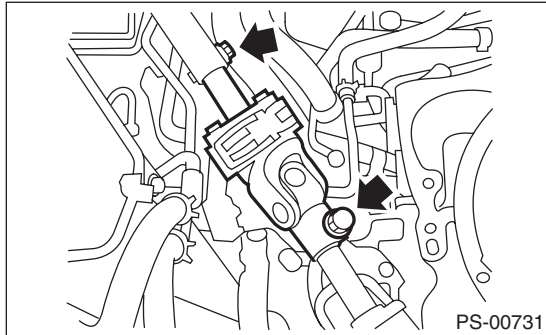


3. Universal Joint

A: REMOVAL

- 1) Remove the steering wheel. <Ref. to PS-12, REMOVAL, Steering Wheel.>
- 2) Place alignment marks on universal joint.
- 3) Remove the universal joint bolt, and then remove the universal joint.



B: INSTALLATION

- 1) Align the cutout portion at serrated section of the column shaft and yoke, then install the universal joint into column shaft.
- 2) Install the universal joint to the serrations of gearbox assembly by matching alignment marks.
- 3) Tighten the bolts on the gearbox side first, and then the column shaft side.

Tightening torque:

24 N·m (2.4 kgf-m, 17.7 ft-lb)

CAUTION:

Be sure to follow the tightening order and tightening torque of universal joint to avoid the steering effort from becoming heavy.

Clearance between coupling of universal joint to AT level gauge:

10 mm (0.39 in) or more

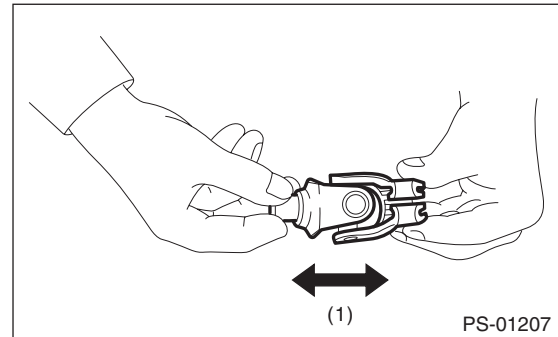
- 4) Align the center position of the roll connector. <Ref. to AB-23, ADJUSTMENT, Roll Connector.>
- 5) Install the steering wheel. <Ref. to PS-12, INSTALLATION, Steering Wheel.>

C: INSPECTION

Check for wear, damage or any other faults. Replace as necessary

Service limit:

Universal joint play: 0 mm (0 in)

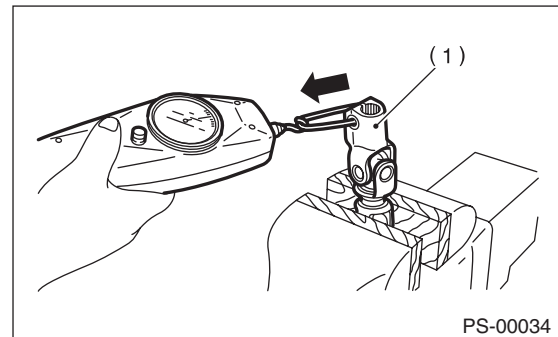


(1) Play

Measure the swing torque of universal joint.

Service limit:

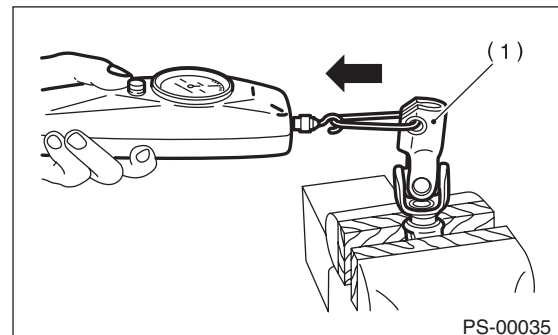
Maximum load: 3.8 N (0.39 kgf, 0.86 lb) or less



(1) Yoke (Gearbox side)

Service limit:

Maximum load: 3.8 N (0.39 kgf, 0.86 lb) or less



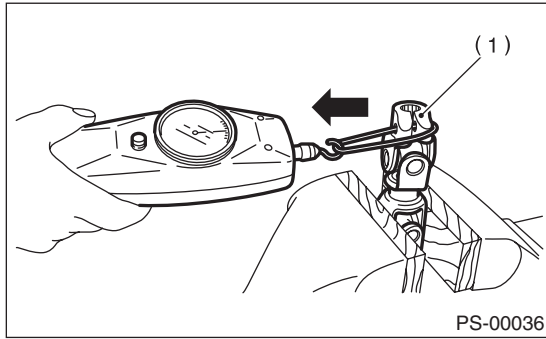
(1) Yoke (Gearbox side)

Universal Joint

POWER ASSISTED SYSTEM (POWER STEERING)

Service limit:

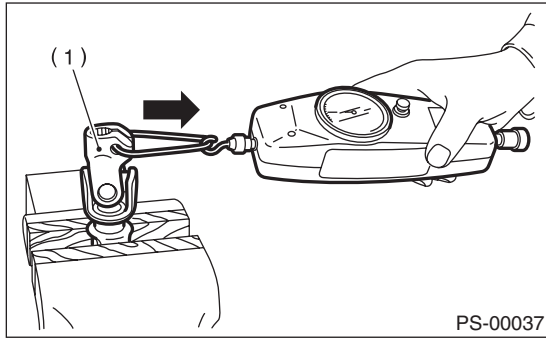
Maximum load: 7.3 N (0.74 kgf, 1.64 lb) or less



(1) Yoke (Steering column side)

Service limit:

Maximum load: 7.3 N (0.74 kgf, 1.64 lb) or less



(1) Yoke (Steering column side)