

# General Description

## PARKING BRAKE

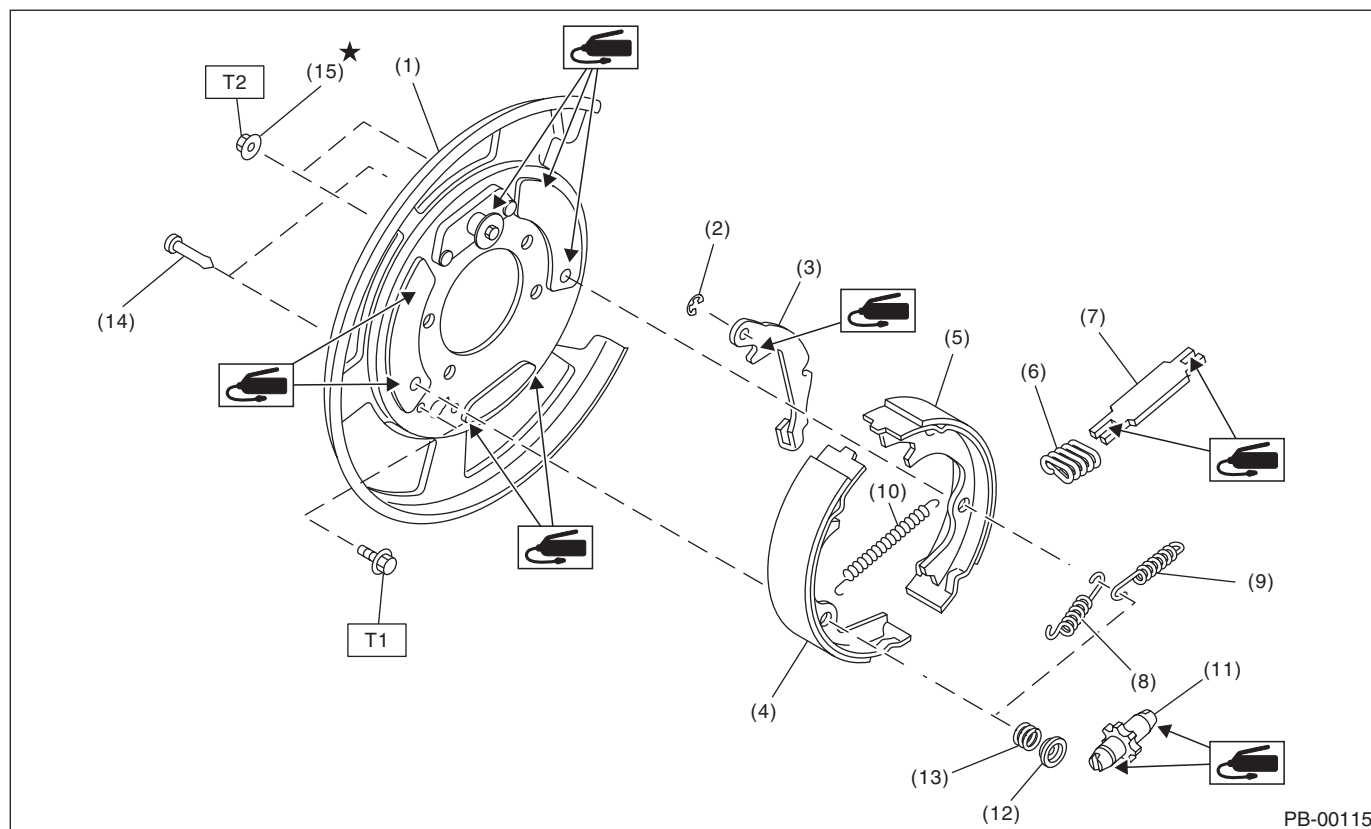
### 1. General Description

#### A: SPECIFICATION

Type		Mechanical, drum in disc rear brakes
Effective drum diameter	mm (in)	210 (8.27)
Lining dimensions (Length × Width × Thickness)	mm (in)	238.2 × 30.0 × 4.0 (9.378 × 1.181 × 0.157)
Clearance adjustment		Manual adjustment
Pedal stroke	notches/N (kgf, lb)	5 — 6/300 (30.6, 67)

#### B: COMPONENT

##### 1. PARKING BRAKE (REAR DISC BRAKE)



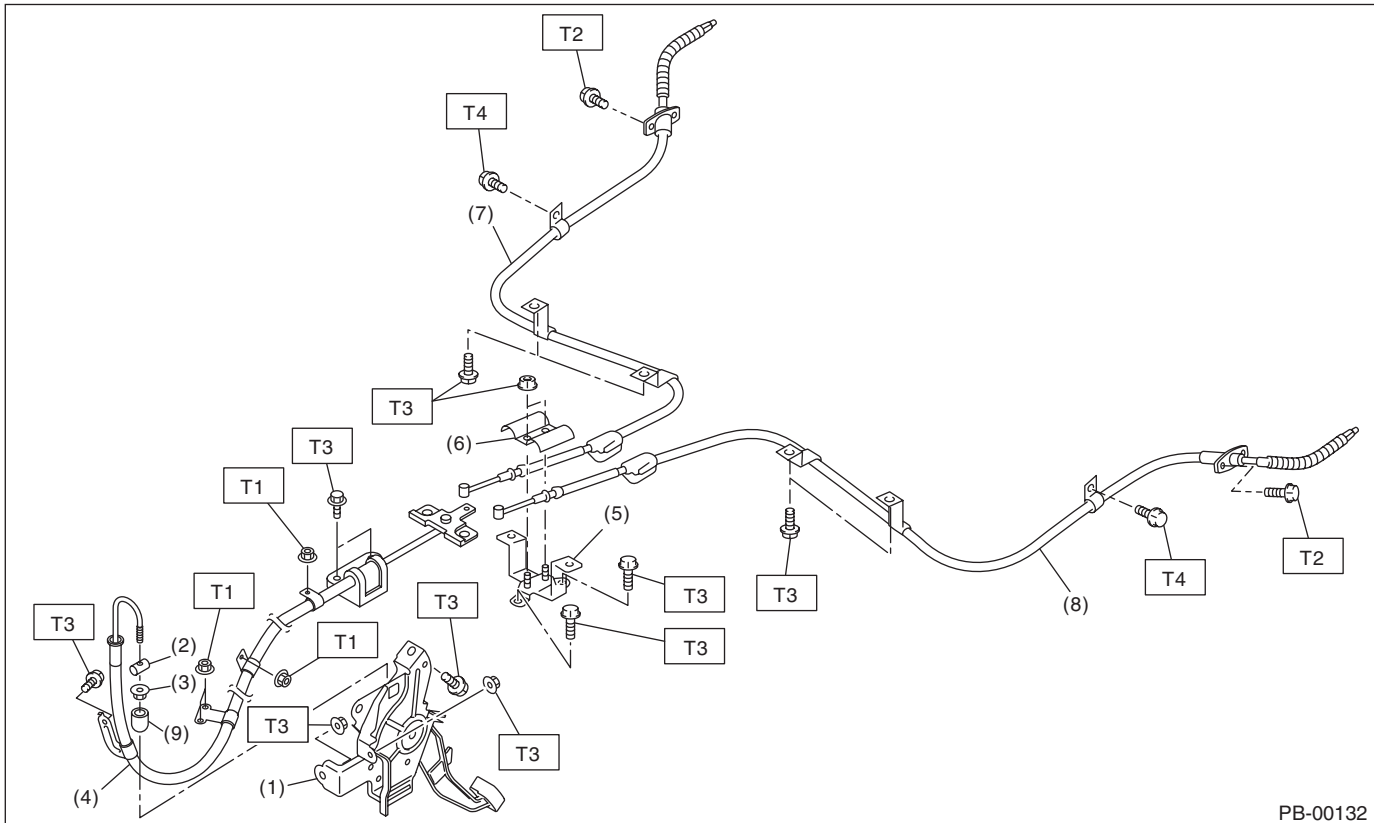
- |                                    |                             |                                  |
|------------------------------------|-----------------------------|----------------------------------|
| (1) Back plate                     | (8) Primary return spring   | (14) Shoe hold pin               |
| (2) Retainer                       | (9) Secondary return spring | (15) Self locking nut (with WAX) |
| (3) Lever                          | (10) Adjusting spring       |                                  |
| (4) Parking brake shoe (primary)   | (11) Adjuster               |                                  |
| (5) Parking brake shoe (secondary) | (12) Brake shoe cup         |                                  |
| (6) Strut spring                   | (13) Brake shoe spring      |                                  |
| (7) Strut                          |                             |                                  |

**Tightening torque: N·m (kgf-m, ft-lb)**

**T1: 8 (0.8, 5.9)**

**T2: 75 (7.6, 55.3)**

## 2. PARKING BRAKE CABLE



- |                                      |                                 |
|--------------------------------------|---------------------------------|
| (1) Parking brake pedal              | (6) Clamp                       |
| (2) Spacer                           | (7) Rear parking brake cable RH |
| (3) Adjusting nut (Self-locking nut) | (8) Rear parking brake cable LH |
| (4) Front parking brake cable        | (9) Adjuster cap                |
| (5) Bracket                          |                                 |

**Tightening torque: N·m (kgf-m, ft-lb)**
**T1: 7.5 (0.76, 5.5)**
**T2: 8 (0.8, 5.9)**
**T3: 18 (1.8, 13.3)**
**T4: 33 (3.4, 24.3)**

## C: CAUTION

- Wear appropriate work clothing, including a cap, protective goggles and protective shoes when performing any work.
- Before removal, installation or disassembly, be sure to clarify the failure. Avoid unnecessary removal, installation, disassembly and replacement.
- Vehicle components are extremely hot after driving. Be wary of receiving burns from heated parts.
- Use SUBARU genuine grease etc. or equivalent. Do not mix grease etc. of different grades or manufacturers.
- Be sure to tighten fasteners including bolts and nuts to the specified torque.
- Place shop jacks or rigid racks at the specified points.
- Before securing a part in a vise, place cushioning material such as wood blocks, aluminum plate or cloth between the part and the vise.
- Make sure grease does not come into contact with the parking shoes.