

# General Description

## WIPER AND WASHER SYSTEMS

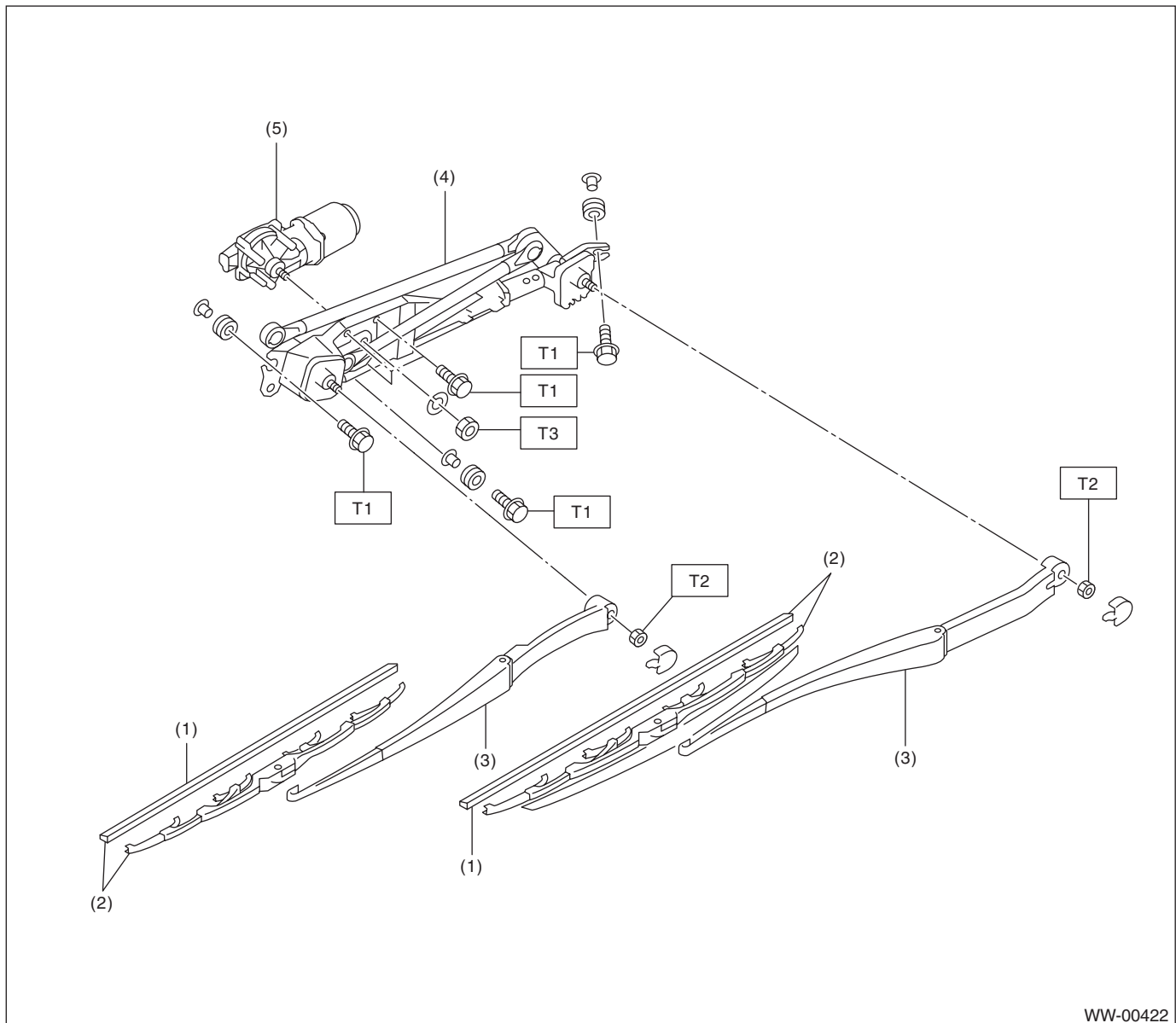
### 1. General Description

#### A: SPECIFICATION

Front wiper motor	Input	12 V — 72 W or less
Rear wiper motor	Input	12 V — 42 W or less
Front washer motor	Pump type	Centrifugal
	Input	12 V — 36 W or less
Rear washer motor	Pump type	Centrifugal
	Input	12 V — 36 W or less

#### B: COMPONENT

##### 1. FRONT WIPER



- |                      |                          |
|----------------------|--------------------------|
| (1) Wiper rubber     | (4) Wiper link ASSY      |
| (2) Wiper blade ASSY | (5) Wiper motor assembly |
| (3) Wiper arm        |                          |

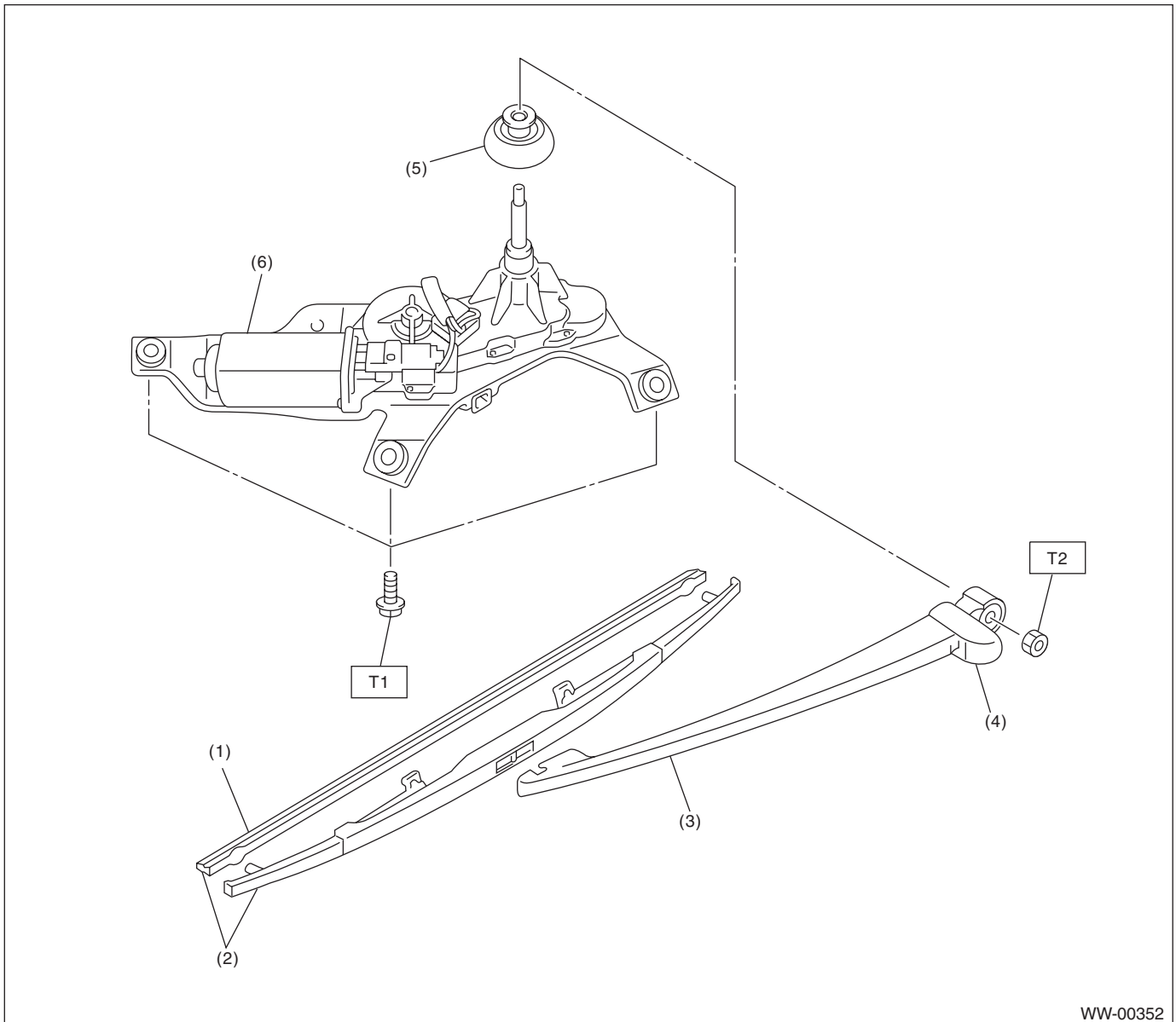
**Tightening torque: N·m (kgf-m, ft-lb)**

**T1: 6.0 (0.61, 4.4)**

**T2: 22 (2.2, 16.2)**

**T3: 31 (3.2, 22.9)**

### 2. REAR WIPER



WW-00352

- |                      |                      |
|----------------------|----------------------|
| (1) Wiper rubber     | (4) Wiper arm cover  |
| (2) Wiper blade ASSY | (5) Cap              |
| (3) Wiper arm        | (6) Wiper motor ASSY |

**Tightening torque: N·m (kgf-m, ft-lb)**

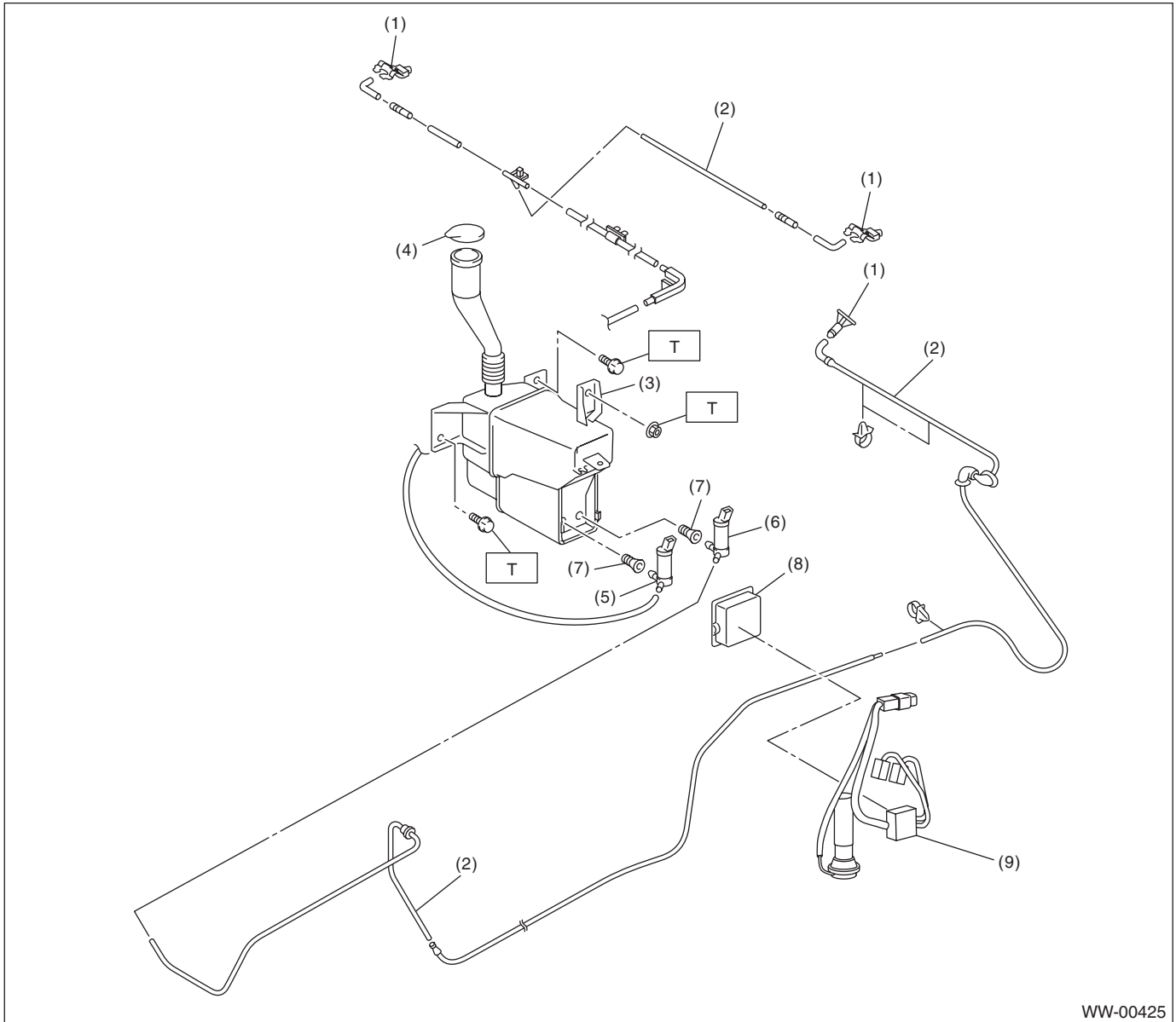
**T1: 7.0 (0.71, 5.2)**

**T2: 8.0 (0.82, 5.9)**

# General Description

## WIPER AND WASHER SYSTEMS

### 3. WASHER TANK



- |                        |  |
|------------------------|--|
| (1) Washer nozzle      | (6) Rear washer motor                        |
| (2) Washer hose        | (7) Grommet                                  |
| (3) Washer tank        | (8) Washer motor cover                       |
| (4) Washer tank cap    | (9) Washer fluid level indicator sensor ASSY |
| (5) Front washer motor |  |

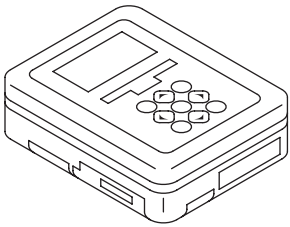
**Tightening torque: N·m (kgf-m, ft-lb)**

**T: 6.0 (0.61, 4.4)**

**C: CAUTION**

- Connect the connectors and hoses securely during reassembly.
- After reassembly, make sure functional parts operate smoothly.
- Be careful with the airbag system wiring harness which passes near electrical parts and switches.
- All airbag system wiring harness and connectors are colored yellow. Do not use a tester equipment on these circuits.
- Care must be taken when connecting the hoses to pipes so that there are no bends or blockage.
- If even a small amount of silicon oil or grease enters tank and washer fluid passages, an oil film will be formed on the glass and will cause the wiper to chatter and judder. Make sure that no oil comes into contact with the system.

**D: PREPARATION TOOL****1. SPECIAL TOOL**

ILLUSTRATION	TOOL NUMBER	DESCRIPTION	REMARKS
 ST1B022XU0	1B022XU0	SUBARU SELECT MONITOR III KIT	Used for settings of each function and trouble-shooting for electrical system.

**2. GENERAL TOOL**

TOOL NAME	REMARKS
Circuit tester	Used for checking voltage and continuity.