

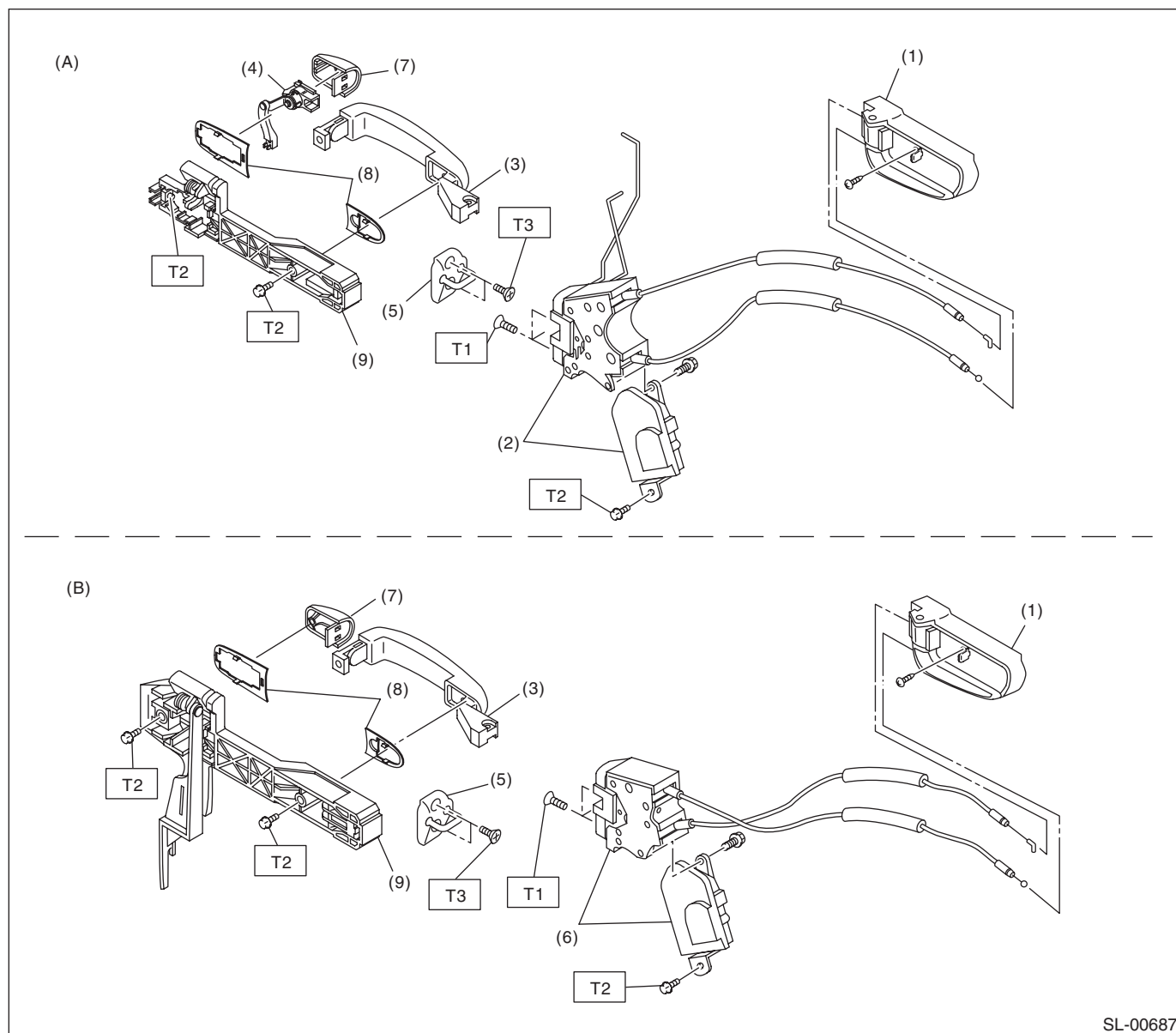
General Description

SECURITY AND LOCKS

1. General Description

A: COMPONENT

1. DOOR LOCK ASSEMBLY



SL-00687

(A) Front

(B) Rear

(1) Inner remote ASSY

(2) Front door latch and door lock actuator ASSY

(3) Door outer handle

(4) Key cylinder

(5) Striker

(6) Rear door latch and door lock actuator ASSY

(7) Door outer handle cover

(8) Door outer handle spacer

(9) Door outer handle frame ASSY

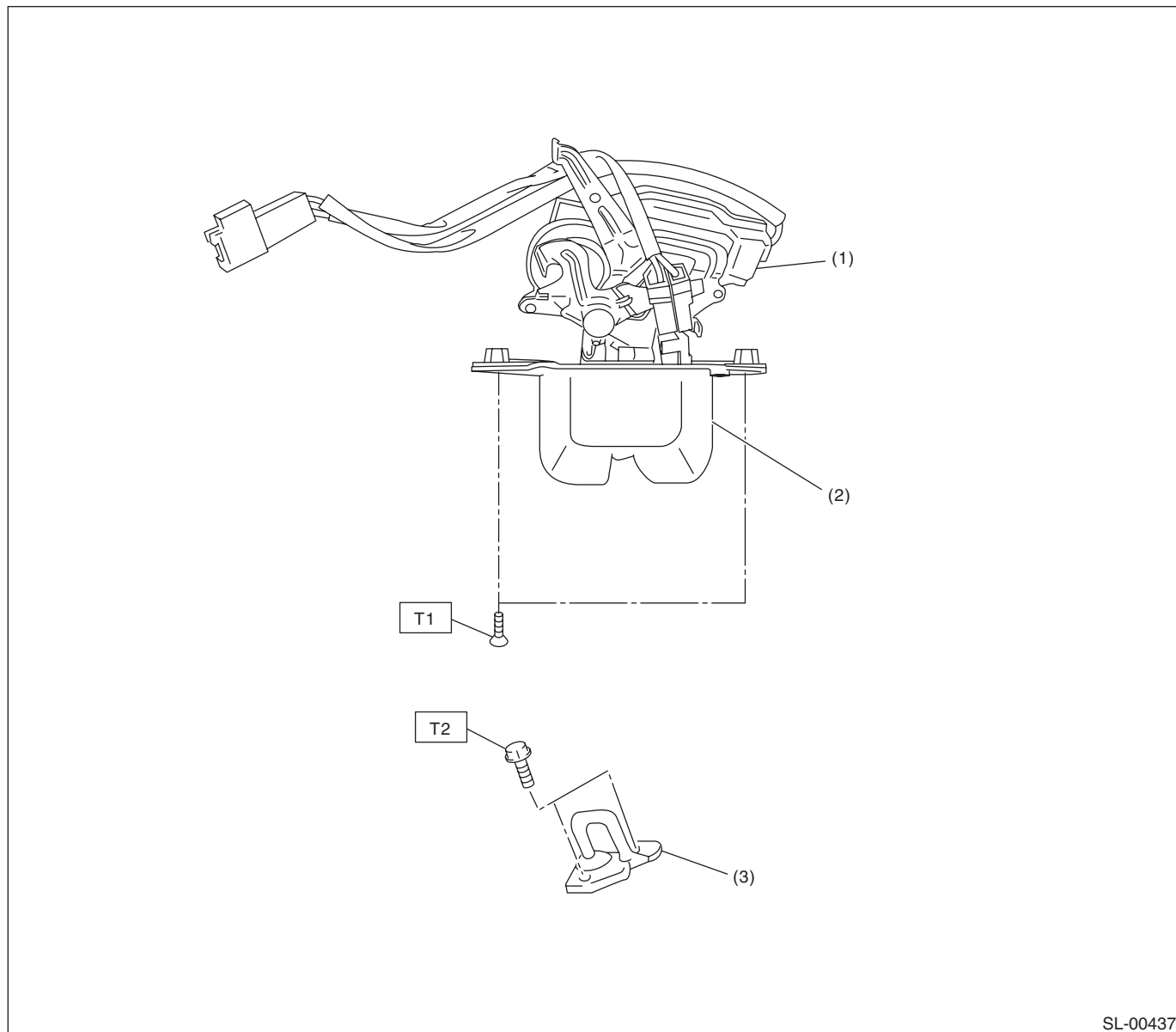
Tightening torque: N·m (kgf-m, ft-lb)

T1: 6.5 (0.66, 4.8)

T2: 7.5 (0.76, 5.5)

T3: 18 (1.8, 13.3)

2. REAR GATE LOCK



SL-00437

- (1) Rear gate actuator
- (2) Rear gate latch
- (3) Striker

Tightening torque: N·m (kgf-m, ft-lb)

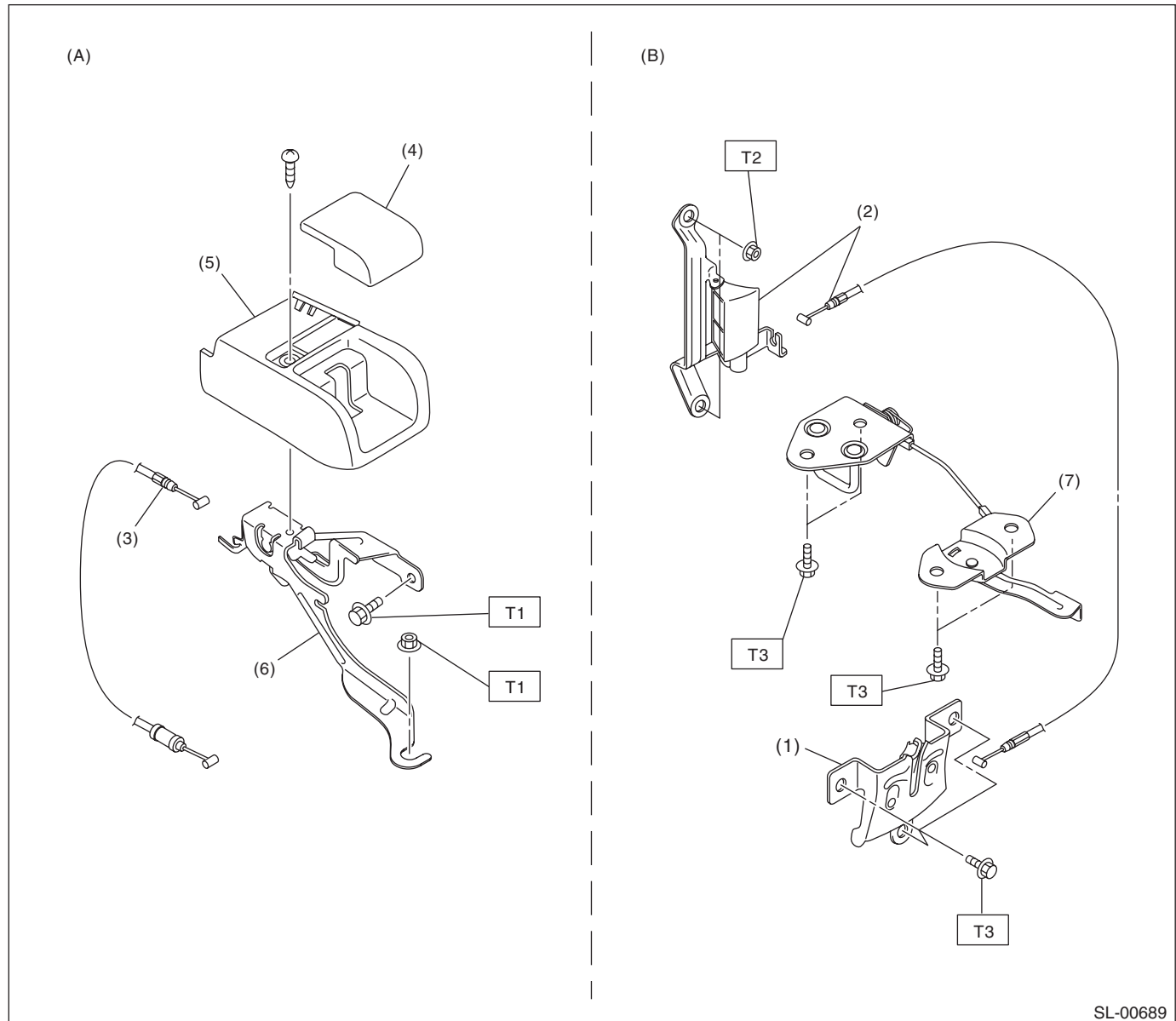
T1: 28 (2.8, 20.6)

T2: 25 (2.5, 18.4)

General Description

SECURITY AND LOCKS

3. FRONT HOOD LOCK AND REMOTE OPENERS



(A) Fuel lid

(B) Hood

- | | |
|----------------------------|--------------------------|
| (1) Front hood lock ASSY | (5) Cover |
| (2) Cable ASSY, front hood | (6) Pull handle ASSY |
| (3) Cable ASSY, fuel | (7) Hood operation lever |
| (4) Pull lever | |

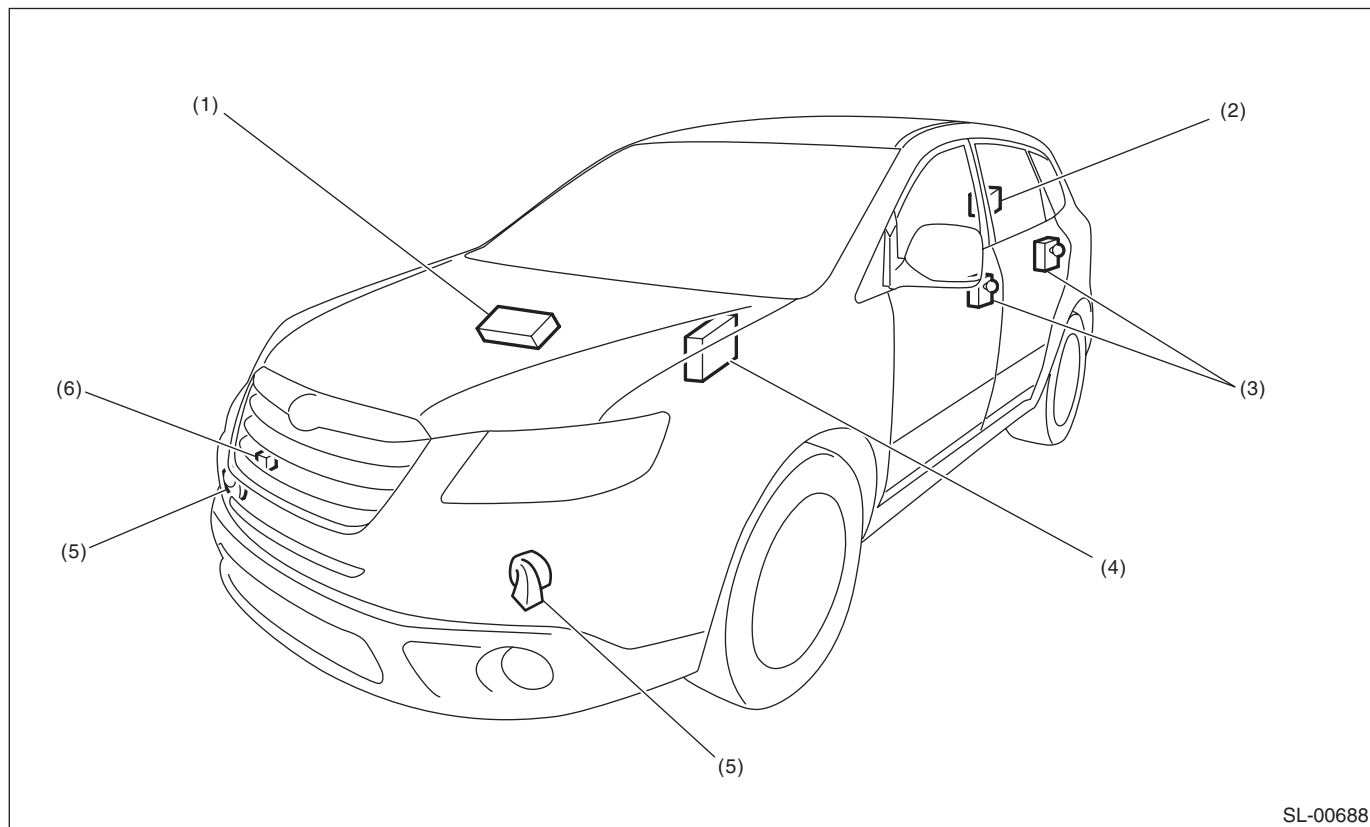
Tightening torque: N·m (kgf-m, ft-lb)

T1: 7.5 (0.76, 5.5)

T2: 25 (2.55, 18.4)

T3: 33.0 (3.36, 24.3)

4. KEYLESS ENTRY SYSTEM



(1) TPMS & keyless entry control module

(3) Door switch

(5) Horn

(2) Rear gate latch switch

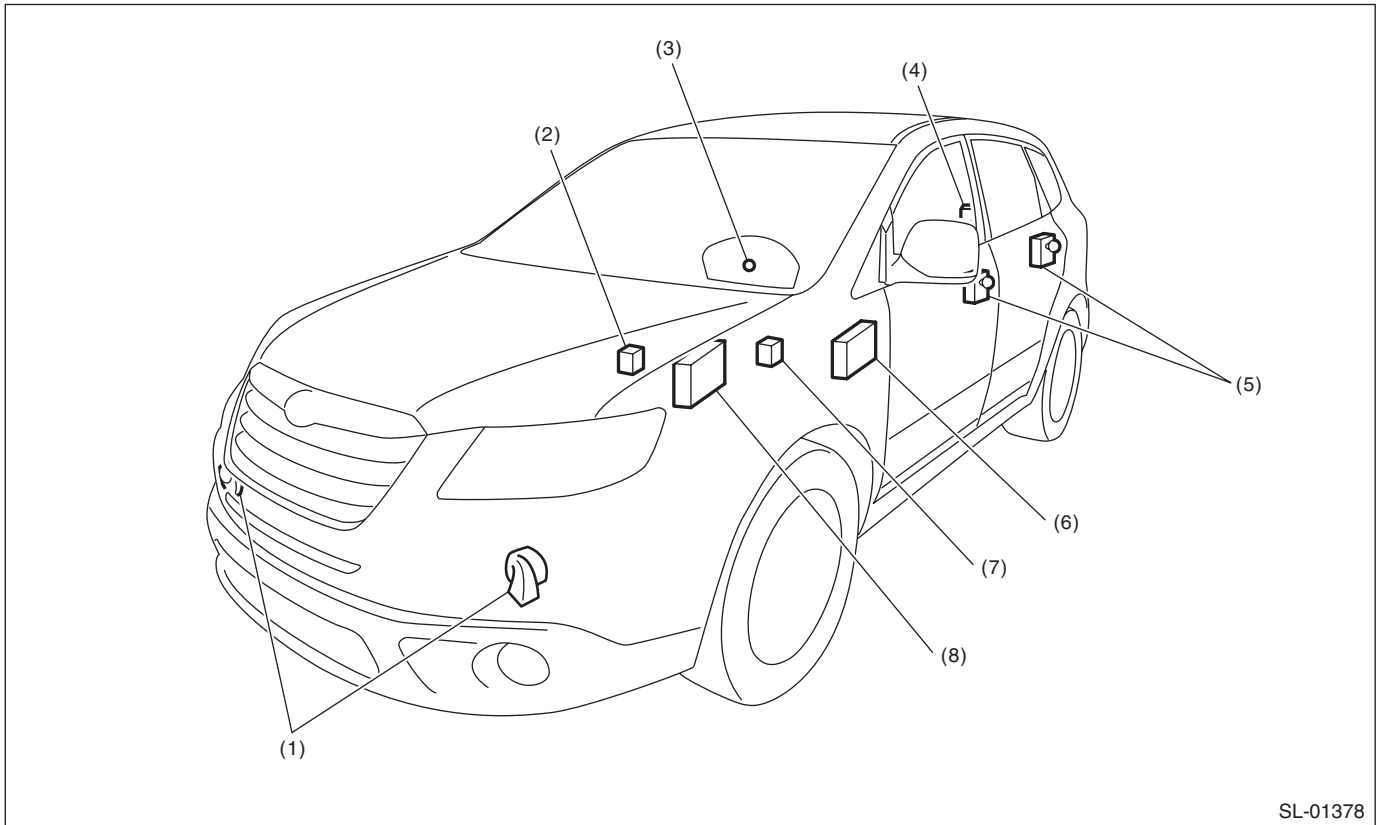
(4) Body integrated unit

(6) Keyless buzzer

General Description

SECURITY AND LOCKS

5. SECURITY SYSTEM



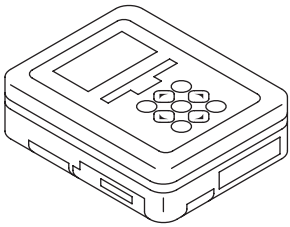
SL-01378

- | | | |
|---|---|-----------------------------------|
| (1) Horn | (4) Rear gate latch switch | (7) Turn signal and hazard module |
| (2) Horn relay | (5) Door switch | (8) Body integrated unit |
| (3) Security indicator light (in combination meter) | (6) Impact sensor (driver's seat instrument panel side) (dealer option) | |

B: CAUTION

- Before disassembling or reassembling parts, always disconnect the battery ground cable from battery. When repairing the audio, control module, etc. which are provided with memory functions, record the memory contents before disconnecting the ground cable from battery. Otherwise, these contents are erased upon disconnection.
- Reassemble the parts in the reverse order of disassembly unless otherwise indicated.
- Adjust the parts to the specifications described in this manual if so designated.
- Connect the connectors securely during reassembly.
- After reassembly, ensure the functional parts operate smoothly.
- The airbag system wiring harness is routed near electrical parts and switches.
- The airbag system wiring harnesses and connectors are colored yellow. Do not use the electrical test equipment on these circuits.
- Be careful not to damage the airbag system wiring harness when servicing the ignition key cylinder.

C: PREPARATION TOOL**1. SPECIAL TOOL**

ILLUSTRATION	TOOL NUMBER	DESCRIPTION	REMARKS
 ST1B022XU0	1B022XU0	SUBARU SELECT MONITOR III KIT	Used for setting of each function and troubleshooting for electrical system.

2. GENERAL TOOL

TOOL NAME	REMARKS
Circuit tester	Used for measuring resistance and voltage.
Drill	Used for replacing ignition key lock.
Clip remover	Used for removing trim.
Clip clamp pliers	Used for removal of various clips and clamps.
TORX® T20	Used for removing and installing the door outer handle.