

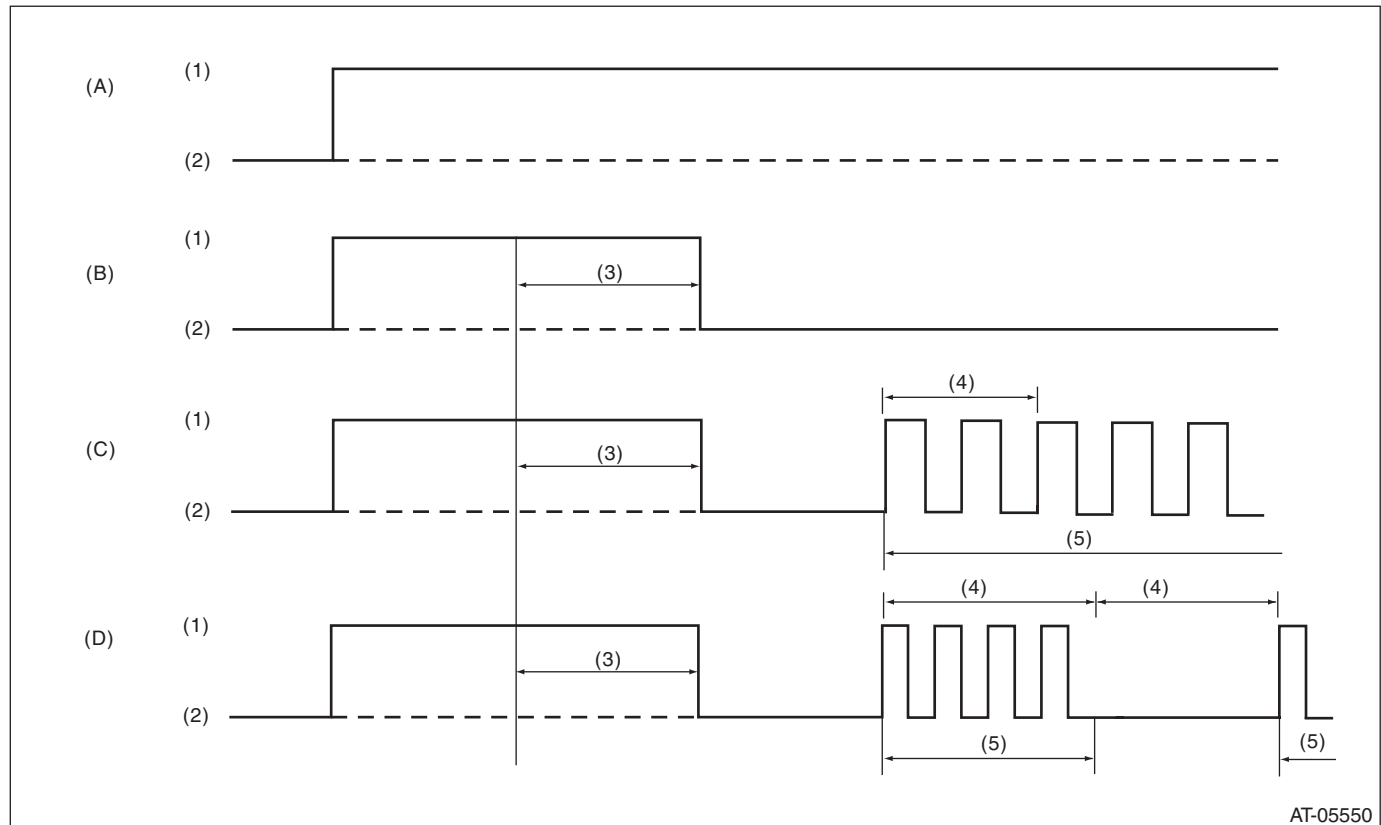
AT OIL TEMP Warning Light Display

AUTOMATIC TRANSMISSION (DIAGNOSTICS)

11.AT OIL TEMP Warning Light Display

A: OPERATION

When any on-board diagnostics item is malfunctioning, or the learning has not yet completed, AT OIL TEMP light blinks. Blinking continues from the engine start to the ignition switch OFF. The faulty parts or unit can be identified by reading DTCs. Problems which occurred previously can also be identified through the memory function. If the AT OIL TEMP light does not blink although a problem is occurring, the problem can be determined by checking the performance characteristics of each sensor using the Subaru Select Monitor. If the learning has not yet completed, "AT learning not completed" is displayed when the Subaru Select Monitor is connected while AT OIL TEMP light is blinking. The AT OIL TEMP light blinking will go off, when the learning is performed. Indicator light signal patterns are as shown in the figure.



(A) Ignition switch (engine OFF)
(D) Learning not completed (engine ON)

(B) Normal (engine ON)

(C) Faulty (engine ON)

(1) ON
(2) OFF

(3) 2 seconds
(4) 1 seconds

(5) Blink

When the AT OIL TEMP light does not operate normally, check the AT OIL TEMP light circuit. <Ref. to 5AT(diag)-25, INSPECTION, AT OIL TEMP Warning Light Display.>

AT OIL TEMP Warning Light Display

AUTOMATIC TRANSMISSION (DIAGNOSTICS)

B: INSPECTION

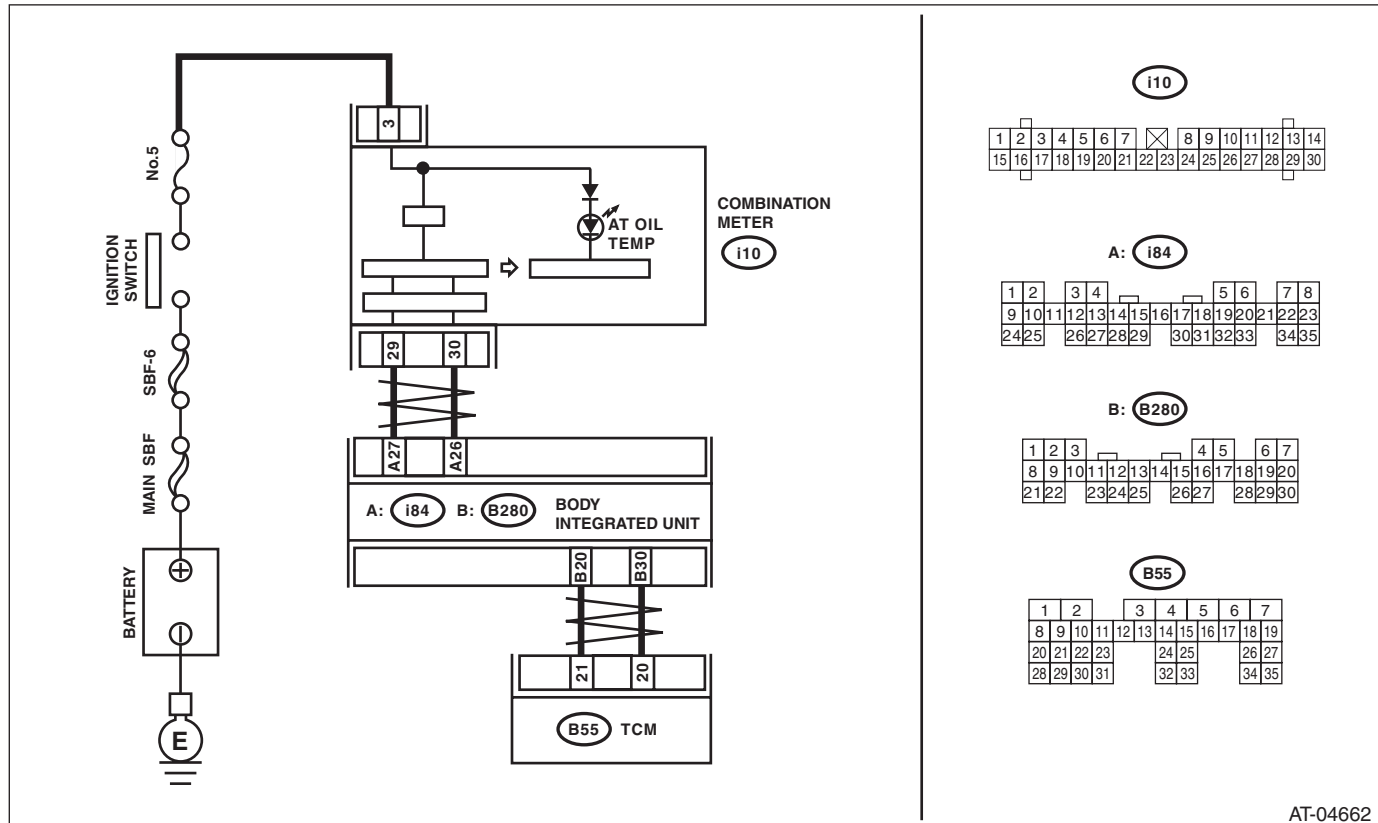
DIAGNOSIS:

AT OIL TEMP light circuit is open or shorted.

TROUBLE SYMPTOM:

When the ignition switch is turned to ON (engine OFF), AT OIL TEMP light does not illuminate.

WIRING DIAGRAM:



AT-04662

Step	Check	Yes	No	
1	CHECK AT OIL TEMP LIGHT. Turn the ignition switch to ON.	Does the AT OIL TEMP light illuminate?	Go to step 2.	Perform the self-diagnosis of combination meter.
2	CHECK AT OIL TEMP LIGHT. Turn the ignition switch to ON and wait for at least 2 seconds.	Does the AT OIL TEMP light illuminate?	Go to step 3.	Go to step 4.
3	CHECK AT OIL TEMP LIGHT. Start the engine.	Does the AT OIL TEMP light go off?	Normal. Go back to "Basic Diagnostic Procedure". <Ref. to 5AT(diag)-2, Basic Diagnostic Procedure.>	Go to step 7.
4	CHECK SUBARU SELECT MONITOR COMMUNICATION. Connect the Subaru Select Monitor to data link connector.	Is the communication between Subaru Select Monitor and TCM normal?	Go to step 5.	Check the power supply ground circuit of TCM and Subaru Select Monitor communication. <Ref. to 5AT(diag)-27, Diagnostic Procedure for Subaru Select Monitor Communication.>

AT OIL TEMP Warning Light Display

AUTOMATIC TRANSMISSION (DIAGNOSTICS)

Step	Check	Yes	No
5 CHECK TCM. 1) Display the current data of TCM using Subaru Select Monitor. <Ref. to 5AT(diag)-16, OPERATION, Subaru Select Monitor.> 2) Read the data of "Diagnosis Lamp" using Subaru Select Monitor.	Is "ON" displayed?	Go to step 6.	Replace the TCM. <Ref. to 5AT-58, Transmission Control Module (TCM).>
6 CHECK BODY INTEGRATED UNIT. 1) Display the current data of body integrated unit using Subaru Select Monitor. <Ref. to LAN(diag)-12, OPERATION, Subaru Select Monitor.> 2) Read the data of "ATF Temperature Lamp" using the Subaru Select Monitor.	Is "ON" displayed?	Replace the combination meter assembly. <Ref. to IDI-11, Combination Meter.>	Check DTC of body integrated unit. <Ref. to LAN(diag)-12, OPERATION, Subaru Select Monitor.>
7 CHECK TCM. NOTE: If the ATF temperature is 138°C or more, cool down till the temperature is 137°C or less. 1) Start the engine. 2) Display the current data of TCM using Subaru Select Monitor. <Ref. to 5AT(diag)-16, OPERATION, Subaru Select Monitor.> 3) Read the data of "Diagnosis Lamp" using Subaru Select Monitor.	Is "ON" displayed?	Replace the TCM. <Ref. to 5AT-58, Transmission Control Module (TCM).>	Go to step 8.
8 CHECK BODY INTEGRATED UNIT. 1) Display the current data of body integrated unit using Subaru Select Monitor. <Ref. to LAN(diag)-12, OPERATION, Subaru Select Monitor.> 2) Read the data of "ATF Temperature Lamp" using the Subaru Select Monitor.	Is "ON" displayed?	Check DTC of body integrated unit. Perform the diagnosis according to DTC. <Ref. to LAN(diag)-12, OPERATION, Subaru Select Monitor.>	Perform the self-diagnosis of combination meter. <Ref. to IDI-4, INSPECTION, Combination Meter System.>