

General Description

STARTING/CHARGING SYSTEMS

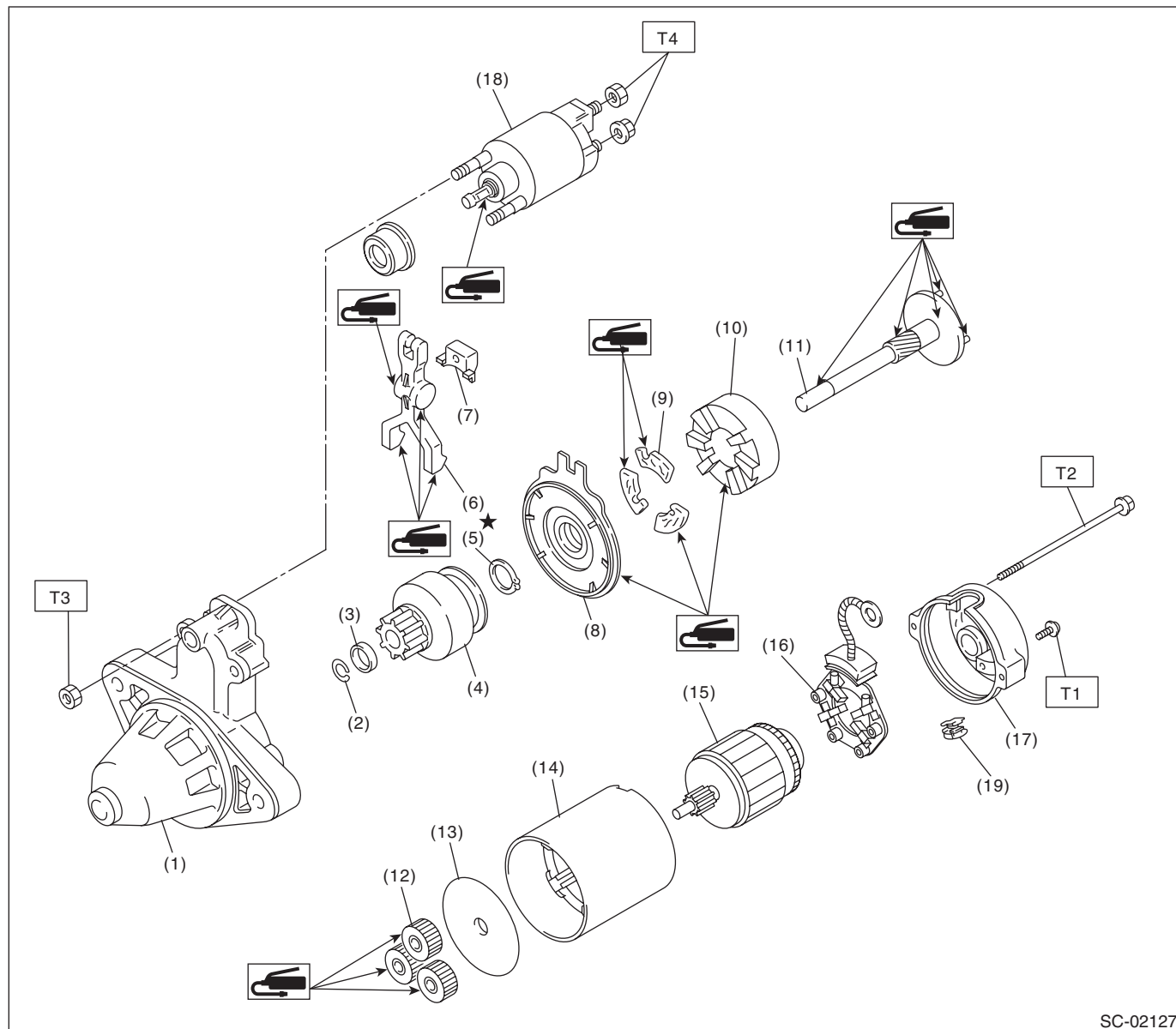
1. General Description

A: SPECIFICATION

Item		Specification
Vehicle model		AT
Starter	Type	Reduction type
	Model	428000-5250
	Manufacturer	DENSO
	Voltage and output	12 V — 1.6 kW
	Direction of rotation	Counterclockwise (when observed from pinion)
	Number of pinion teeth	9
	No-load characteristics	Voltage
		11 V
		Current
		90 A or less
		Rotating speed
		1,550 rpm or more
	Load characteristics	Voltage
		8 V
		Current
		370 A
	Lock characteristics	Torque
		12.8 N·m (1.31 kgf-m, 9.4 ft-lb) or more
		Rotating speed
		800 rpm or more
Generator	Type	Rotating-field three-phase type, voltage regulator built-in type, with load response control system
	Model	A003TJ2091
	Manufacturer	MITSUBISHI ELECTRIC
	Voltage and output	12 V — 130 A
	Polarity on ground side	Negative
	Direction of rotation	Clockwise (when observed from pulley side)
	Stator coil connection	3-phase delta connection
	Output current	1,500 rpm — 55 A or more 2,500 rpm — 108 A or more 5,000 rpm — 127 A or more
	Regulated voltage	14.1 — 14.8 V [20°C (68°F)]
Battery	Type and capacity	12 V — 52 AH (75D23L)

B: COMPONENT

1. STARTER



SC-02127

- | | |
|----------------------------|-------------------------|
| (1) Starter housing | (10) Internal gear |
| (2) Snap ring | (11) Shaft |
| (3) Stopper | (12) Planetary gear |
| (4) Overrunning clutch | (13) Starter plate |
| (5) Snap ring | (14) Yoke |
| (6) Shift lever | (15) Armature |
| (7) Starter seal | (16) Brush holder ASSY |
| (8) Shock absorber bearing | (17) Starter cover |
| (9) Shock absorber | (18) Magnet switch ASSY |

- (19) Drain duct

Tightening torque: N·m (kgf-m, ft-lb)

T1: 1.4 (0.1, 1.0)

T2: 6 (0.6, 4.4)

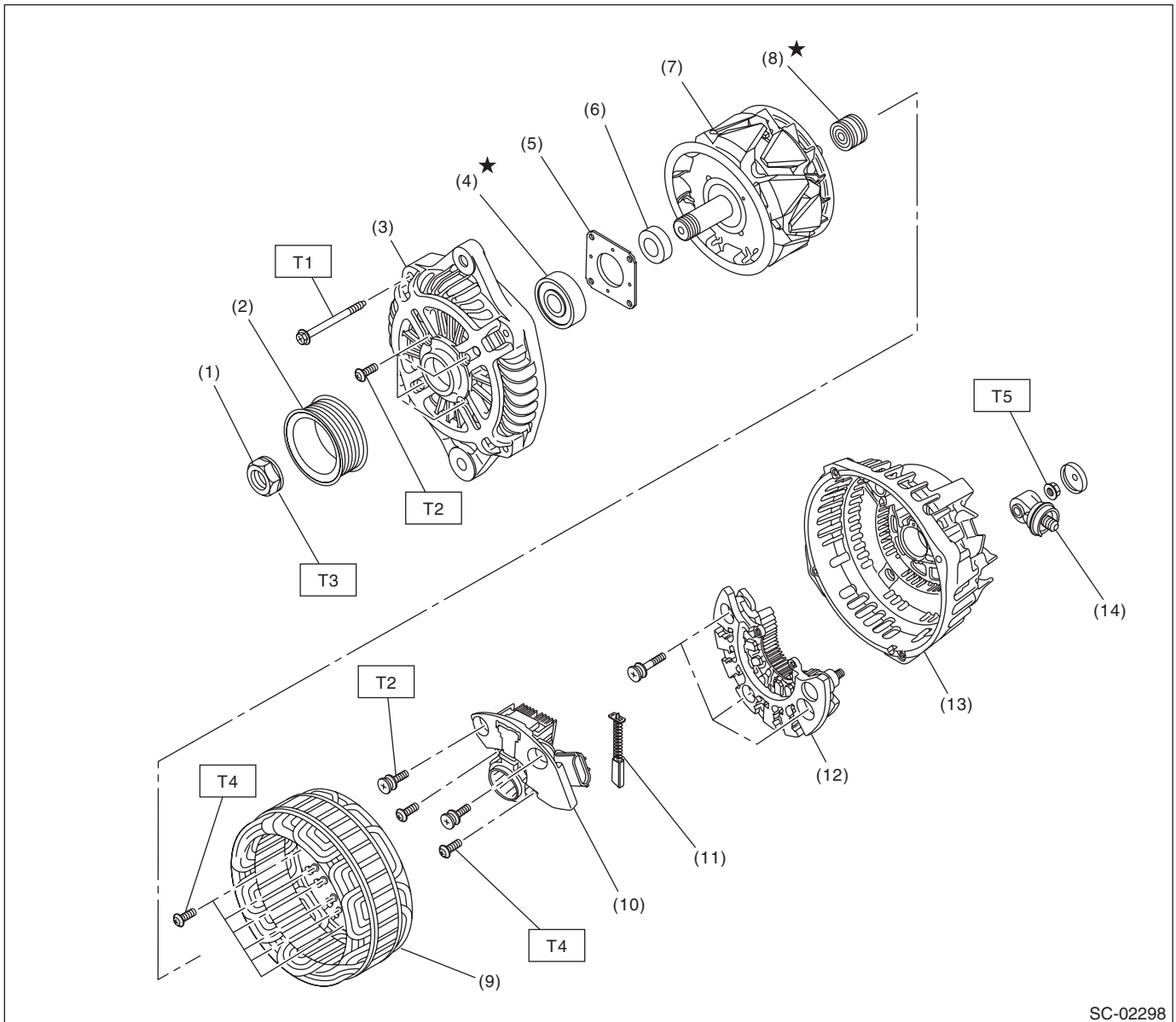
T3: 7.5 (0.8, 5.5)

T4: 10 (1.0, 7.4)

General Description

STARTING/CHARGING SYSTEMS

2. GENERATOR



SC-02298

- | | |
|----------------------|-------------------|
| (1) Pulley nut | (8) Bearing |
| (2) Pulley | (9) Stator coil |
| (3) Front cover | (10) IC regulator |
| (4) Ball bearing | (11) Brush |
| (5) Bearing retainer | (12) Rectifier |
| (6) Spacer | (13) Rear cover |
| (7) Rotor | (14) Terminal B |

Tightening torque:N·m (kgf-m, ft-lb)

T1: 4.4 (0.4, 3.2)

T2: 3.9 (0.4, 2.9)

T3: 117.5 (12.0, 86.7)

T4: 2 (0.2, 1.5)

T5: 8.9 (0.9, 6.6)

C: CAUTION

- Wear appropriate work clothing, including a cap, protective goggles and protective shoes when performing any work.
- Remove contamination including dirt and corrosion before removal, installation or disassembly.
- Keep the disassembled parts in order and protect them from dust and dirt.
- Before removal, installation or disassembly, be sure to clarify the failure. Avoid unnecessary removal, installation, disassembly and replacement.
- Vehicle components are extremely hot after driving. Be wary of receiving burns from heated parts.
- Be sure to tighten fasteners including bolts and nuts to the specified torque.
- Place shop jacks or rigid racks at the specified points.
- Before disconnecting connectors of sensors or units, be sure to disconnect the ground cable from the battery.