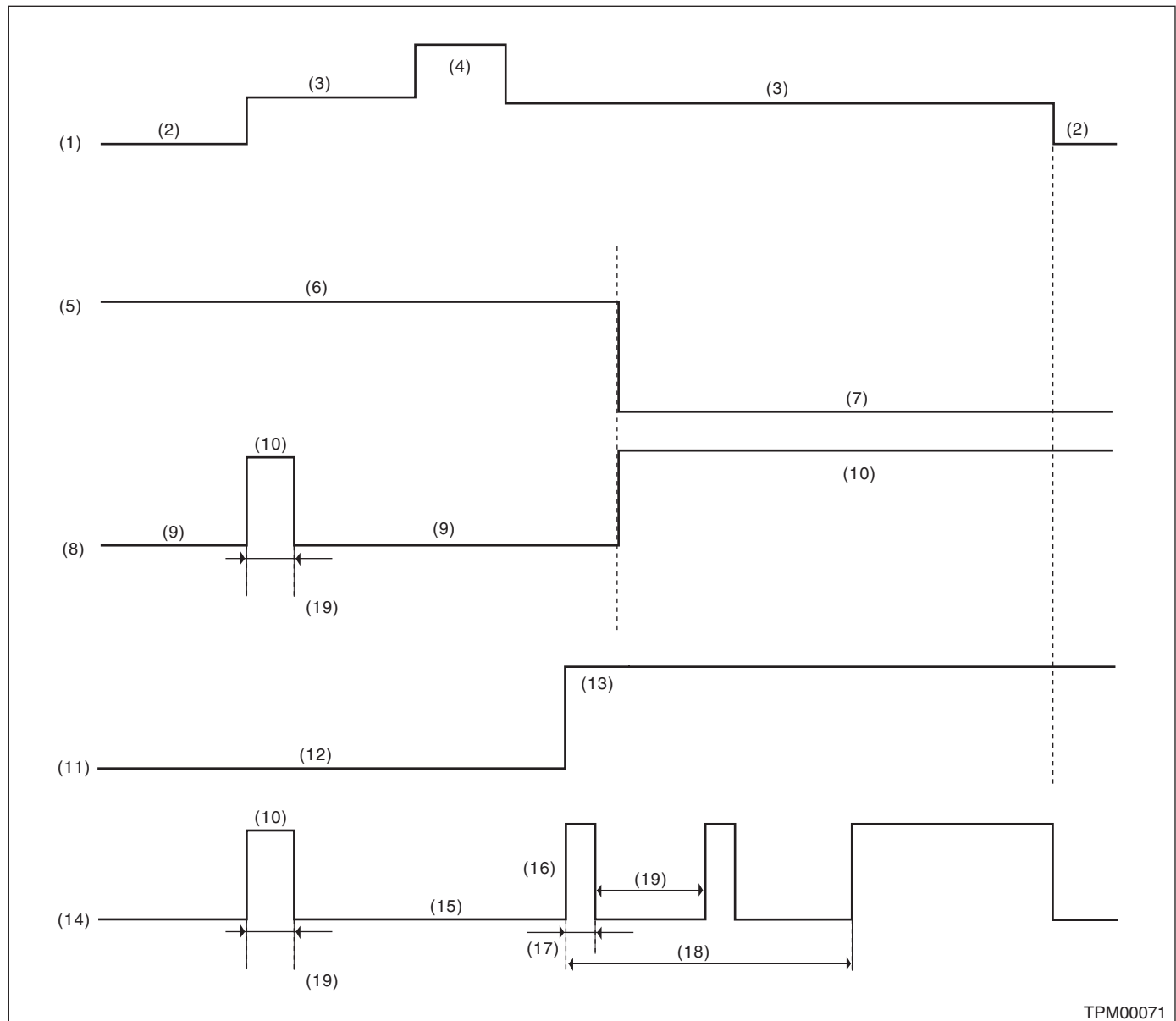


9. Tire Pressure Warning Light / Trouble Indicator Light Illumination Pattern

A: INSPECTION



TPM00071

- | | | |
|---|---|---|
| (1) Ignition switch | (8) Tire pressure warning light (tire pressure condition) | (14) Tire pressure warning light (system condition) |
| (2) OFF | (9) Light OFF | (15) Light OFF |
| (3) ON | (10) Light ON | (16) Blink |
| (4) Start | (11) System status | (17) 1 second |
| (5) Tire inflation pressure condition | (12) Normal | (18) Blinks 25 times |
| (6) Meet the specification | (13) Malfunction | (19) 2 second |
| (7) Less than standard value
(For the pressure warning level, refer to "CURRENT DATA".) <Ref. to TPM(diag)-9, DATA DISPLAY, OPERATION, Subaru Select Monitor.> | | |

Tire Pressure Warning Light / Trouble Indicator Light Illumination Pattern

TIRE PRESSURE MONITORING SYSTEM (DIAGNOSTICS)

1) When the tire pressure warning light does not illuminate in accordance with this illumination pattern, there must be an electrical malfunction.

2) If the tire pressure warning light does not go off, check the tire pressure monitoring control module/warning light circuit and the combination meter circuit. <Ref. to TPM(diag)-22, TIRE PRESSURE WARNING LIGHT DOES NOT COME OFF, Tire Pressure Warning Light / Trouble Indicator Light Illumination Pattern.>

NOTE:

If the problem is fixed while driving at approximately 40 km/h (25 MPH) after the tire pressure warning light blinks/lights, the warning light goes out and the tire pressure monitor system operates normally. (If there is a decrease in tire pressure, or a malfunction of the system, the malfunction history is displayed.)

Tire Pressure Warning Light / Trouble Indicator Light Illumination Pattern

TIRE PRESSURE MONITORING SYSTEM (DIAGNOSTICS)

B: TIRE PRESSURE WARNING LIGHT DOES NOT COME ON

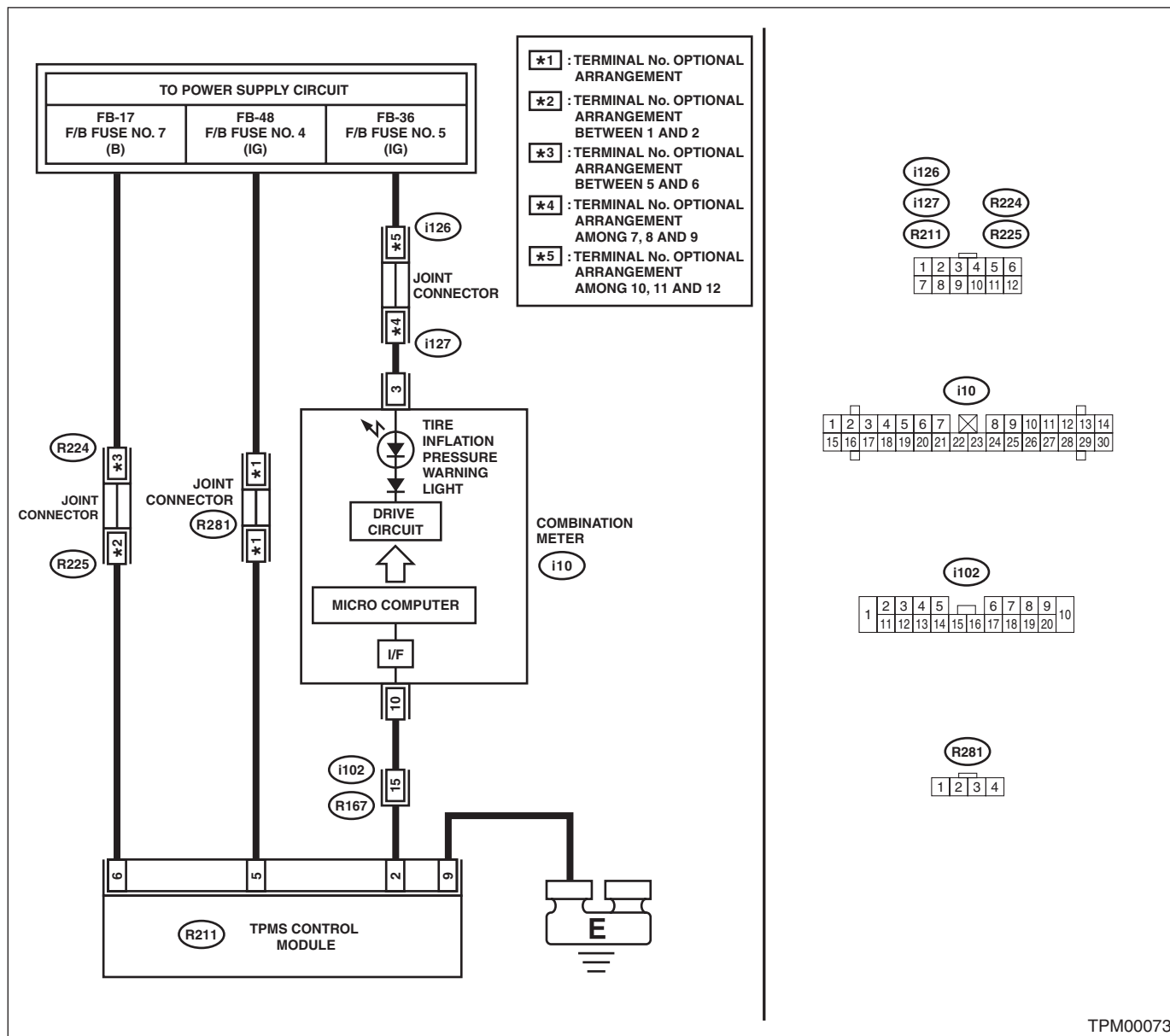
DETECTING CONDITION:

Defective combination meter

TROUBLE SYMPTOM:

When the ignition switch is turned to ON, the tire pressure warning light does not turn on (for approx. 2 seconds).

WIRING DIAGRAM:



TPM00073

Step	Check	Yes	No
1	CHECK DIAGNOSTIC TROUBLE CODE (DTC). Connect the Subaru Select Monitor, and read the Diagnostic Trouble Code. <Ref. to TPM(diag)-8, READ DIAGNOSTIC TROUBLE CODE (DTC), OPERATION, Subaru Select Monitor.>	Is diagnostics code (DTC) displayed? Perform the diagnosis according to the DTC. <Ref. to TPM(diag)-26, List of Diagnostic Trouble Code (DTC).>	Replace the combination meter. <Ref. to IDI-11, REMOVAL, Combination Meter.>

TIRE PRESSURE MONITORING SYSTEM (DIAGNOSTICS)

WIRING DIAGRAM:

TPM(diag)-22

Tire Pressure Warning Light / Trouble Indicator Light Illumination Pattern

TIRE PRESSURE MONITORING SYSTEM (DIAGNOSTICS)

Step	Check	Yes	No
2 CHECK TRANSMITTER (ID). Display the transmitter ID of the tire pressure monitor system. <Ref. to TPM(diag)-10, DISPLAY TRANSMITTER (ID), OPERATION, Subaru Select Monitor.>	Is the transmitter ID registered?	Go to step 3.	Register the transmitter ID. <Ref. to TPM(diag)-9, REGISTER TRANSMITTER (ID), OPERATION, Subaru Select Monitor.>
3 CHECK TRANSMITTER DATA OUTPUT. 1) Select data display of the tire pressure monitoring. 2) Start the engine and check the tire pressure warning light output.	Is the warning light output ON?	Replace the tire pressure monitoring control module. <Ref. to WT-11, TIRE PRESSURE MONITORING CONTROL MODULE, REMOVAL, Tire Pressure Monitoring System.>	Replace the combination meter. <Ref. to IDI-11, REMOVAL, Combination Meter.>

TIRE PRESSURE MONITORING SYSTEM (DIAGNOSTICS)

- Tire pressure monitoring control module is faulty.
- Defective harness
- Transmitter is faulty.

Every time the engine starts, tire pressure warning light blinks 25 times and then illuminates.

TO POWER SUPPLY CIRCUIT

FB-17 F/B FUSE NO. 7 (B)	FB-48 F/B FUSE NO. 4 (IG)	FB-36 F/B FUSE NO. 5 (IG)
--------------------------------	---------------------------------	---------------------------------

Legend:

- *1 : TERMINAL No. OPTIONAL ARRANGEMENT
- *2 : TERMINAL No. OPTIONAL ARRANGEMENT BETWEEN 1 AND 2
- *3 : TERMINAL No. OPTIONAL ARRANGEMENT BETWEEN 5 AND 6
- *4 : TERMINAL No. OPTIONAL ARRANGEMENT AMONG 7, 8 AND 9
- *5 : TERMINAL No. OPTIONAL ARRANGEMENT AMONG 10, 11 AND 12

TPMS CONTROL MODULE (R211)

Micro Computer

DRIVE CIRCUIT

TIRE INFLATION PRESSURE WARNING LIGHT

COMBINATION METER (i10)

TPMS SENSOR (R281)

Wiring Details:

- TPMS CONTROL MODULE (R211) terminals 6, 5, 2, 9 are connected to the power supply circuit.
- TPMS CONTROL MODULE (R211) terminal 6 is connected to FB-17 F/B FUSE NO. 7 (B).
- TPMS CONTROL MODULE (R211) terminal 5 is connected to FB-48 F/B FUSE NO. 4 (IG).
- TPMS CONTROL MODULE (R211) terminal 2 is connected to FB-36 F/B FUSE NO. 5 (IG).
- TPMS CONTROL MODULE (R211) terminal 9 is connected to the ground (E).
- Micro Computer is connected to the Drive Circuit.
- Drive Circuit is connected to the Tire Inflation Pressure Warning Light.
- Combination Meter (i10) is connected to the Drive Circuit.
- TPMS Sensor (R281) is connected to the Drive Circuit.

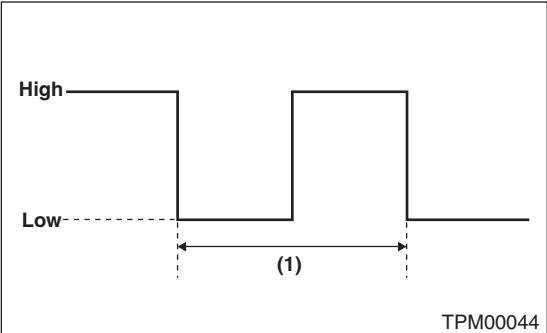
Terminal Arrangements:

- i126**: Terminal 126
- i127**: Terminal 127
- i10**: Terminal 10
- i102**: Terminal 102
- R224**: Terminal 224
- R225**: Terminal 225
- R281**: Terminal 281

Step		Check	Yes	No
1	CHECK DTC. Connect the Subaru Select Monitor, and read the Diagnostic Trouble Code. <Ref. to TPM(diag)-8, READ DIAGNOSTIC TROUBLE CODE (DTC), OPERATION, Subaru Select Monitor.>	Is diagnostics code (DTC) displayed?	Perform the diagnosis according to the DTC. <Ref. to TPM(diag)-26, List of Diagnostic Trouble Code (DTC).>	Go to step 2.

Tire Pressure Warning Light / Trouble Indicator Light Illumination Pattern

TIRE PRESSURE MONITORING SYSTEM (DIAGNOSTICS)

Step	Check	Yes	No
2 CHECK HARNESS. 1) Connect the Subaru Select Monitor to the terminal No. 2 of the tire pressure monitoring control module connector (R211). Connector & terminal (R211) No. 2 (+) — Chassis ground (-): 2) Turn the ignition switch to ON, and select "Oscilloscope" from the Main Menu of Subaru Select Monitor. 3) Check the voltage displayed.	Is the voltage 10 V or more?	Go to step 3.	Go to step 4.
3 CHECK HARNESS. 1) Check the output waveform displayed in the oscilloscope of Subaru Select Monitor. 	Is the pattern the same output waveform as shown in the figure? (1) 400±20 ms Duty 50 % High: Battery voltage Low: 1.5 V or less	Check the combination meter.	Replace the tire pressure monitoring control module. <Ref. to WT-11, REMOVAL, Tire Pressure Monitoring System.>
4 CHECK HARNESS. 1) Disconnect the tire pressure monitoring control module connector. 2) Connect the Subaru Select Monitor to the terminal No. 2 of the tire pressure monitoring control module connector (R211). Connector & terminal (R211) No. 2 (+) — Chassis ground (-): 3) Turn the ignition switch to ON, and select "Oscilloscope" from the Main Menu of Subaru Select Monitor. 4) Check the voltage displayed.	Is the voltage 10 V or more?	Replace the tire pressure monitoring control module. <Ref. to WT-11, REMOVAL, Tire Pressure Monitoring System.>	The harness between the combination meter connector and the tire pressure monitoring control module connector is shorted or open. Repair or replace the harness.