

General Description

PARKING BRAKE

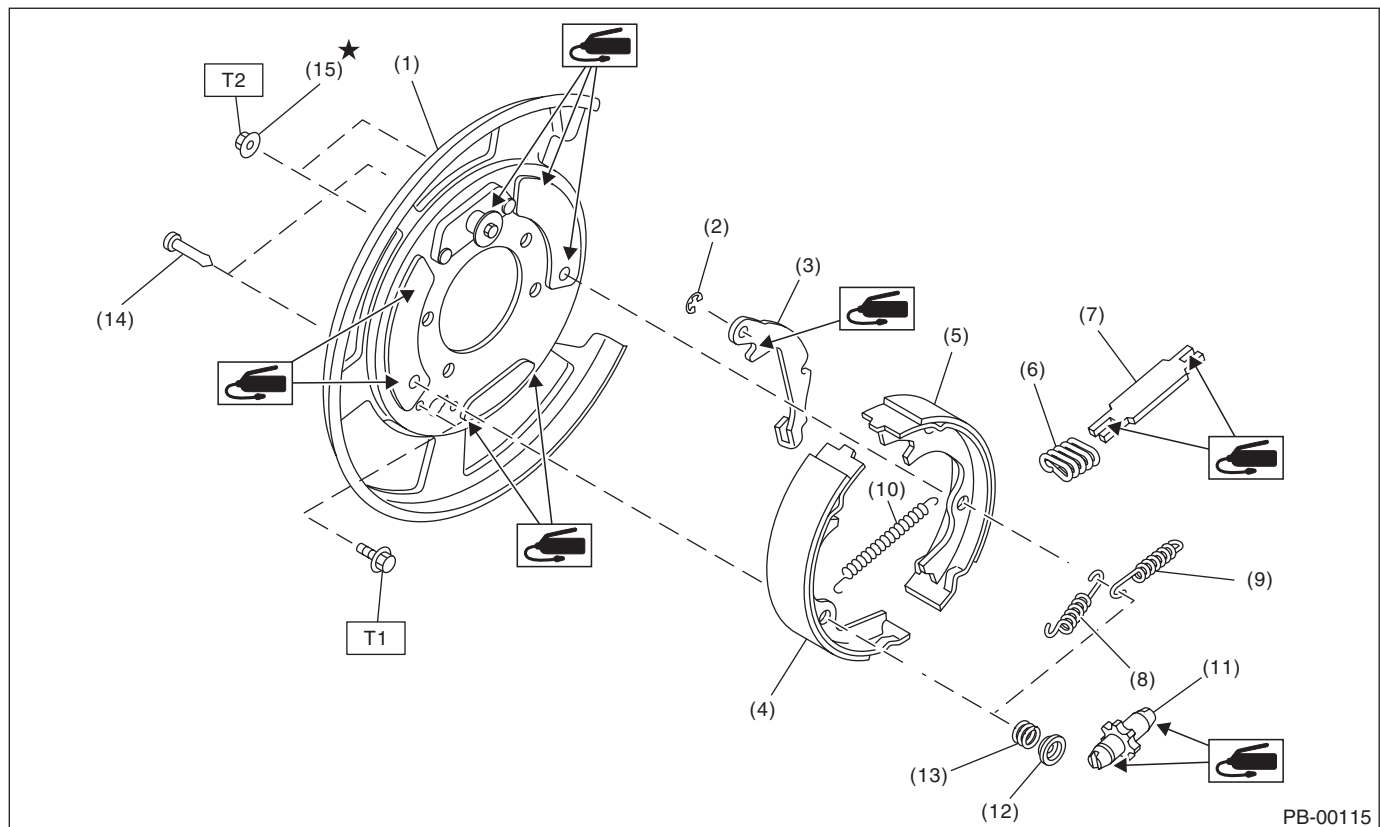
1. General Description

A: SPECIFICATION

Type		Mechanical, drum in disc rear brakes
Effective drum diameter	mm (in)	210 (8.27)
Lining dimensions (Length × Width × Thickness)	mm (in)	238.2 × 30.0 × 4.0 (9.378 × 1.181 × 0.157)
Clearance adjustment		Manual adjustment
Pedal stroke	notches/N (kgf, lb)	5 — 6/300 (30.6, 67)

B: COMPONENT

1. PARKING BRAKE (REAR DISC BRAKE)



PB-00115

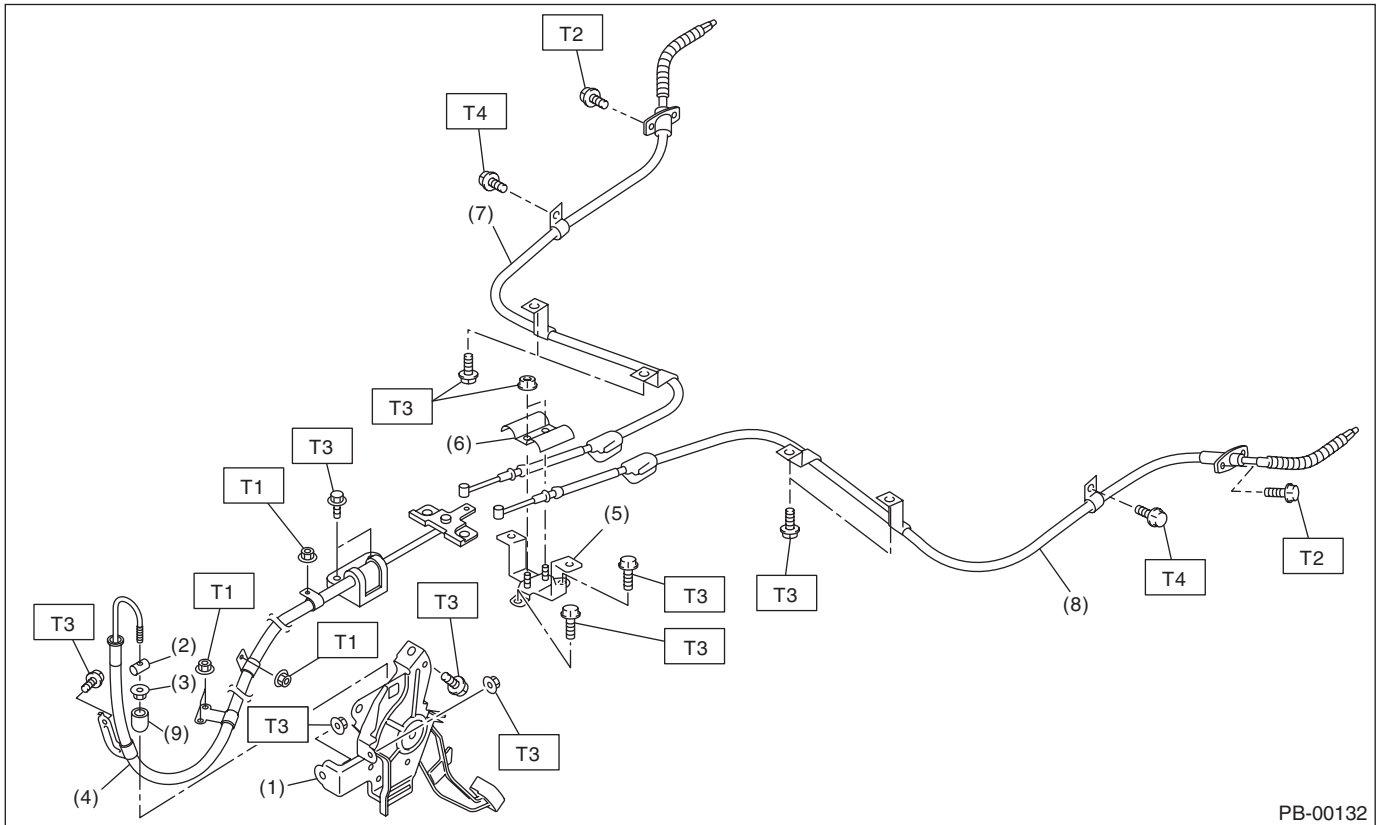
- | | | |
|------------------------------------|-----------------------------|----------------------------------|
| (1) Back plate | (8) Primary return spring | (14) Shoe hold pin |
| (2) Retainer | (9) Secondary return spring | (15) Self locking nut (with WAX) |
| (3) Lever | (10) Adjusting spring | |
| (4) Parking brake shoe (primary) | (11) Adjuster | |
| (5) Parking brake shoe (secondary) | (12) Brake shoe cup | |
| (6) Strut spring | (13) Brake shoe spring | |
| (7) Strut | | |

Tightening torque: N·m (kgf·m, ft·lb)

T1: 8 (0.8, 5.9)

T2: 75 (7.6, 55.3)

2. PARKING BRAKE CABLE



PB-00132

- | | |
|--------------------------------------|---------------------------------|
| (1) Parking brake pedal | (6) Clamp |
| (2) Spacer | (7) Rear parking brake cable RH |
| (3) Adjusting nut (Self-locking nut) | (8) Rear parking brake cable LH |
| (4) Front parking brake cable | (9) Adjuster cap |
| (5) Bracket | |

Tightening torque: N-m (kgf-m, ft-lb)

T1: 7.5 (0.76, 5.5)

T2: 8 (0.8, 5.9)

T3: 18 (1.8, 13.3)

T4: 33 (3.4, 24.3)

General Description

PARKING BRAKE

C: CAUTION

- Wear appropriate work clothing, including a cap, protective goggles and protective shoes when performing any work.
- Before removal, installation or disassembly, be sure to clarify the failure. Avoid unnecessary removal, installation, disassembly and replacement.
- Vehicle components are extremely hot after driving. Be wary of receiving burns from heated parts.
- Use SUBARU genuine grease etc. or equivalent. Do not mix grease etc. of different grades or manufacturers.
- Be sure to tighten fasteners including bolts and nuts to the specified torque.
- Place shop jacks or rigid racks at the specified points.
- Before securing a part in a vise, place cushioning material such as wood blocks, aluminum plate or cloth between the part and the vise.
- Make sure grease does not come into contact with the parking shoes.