

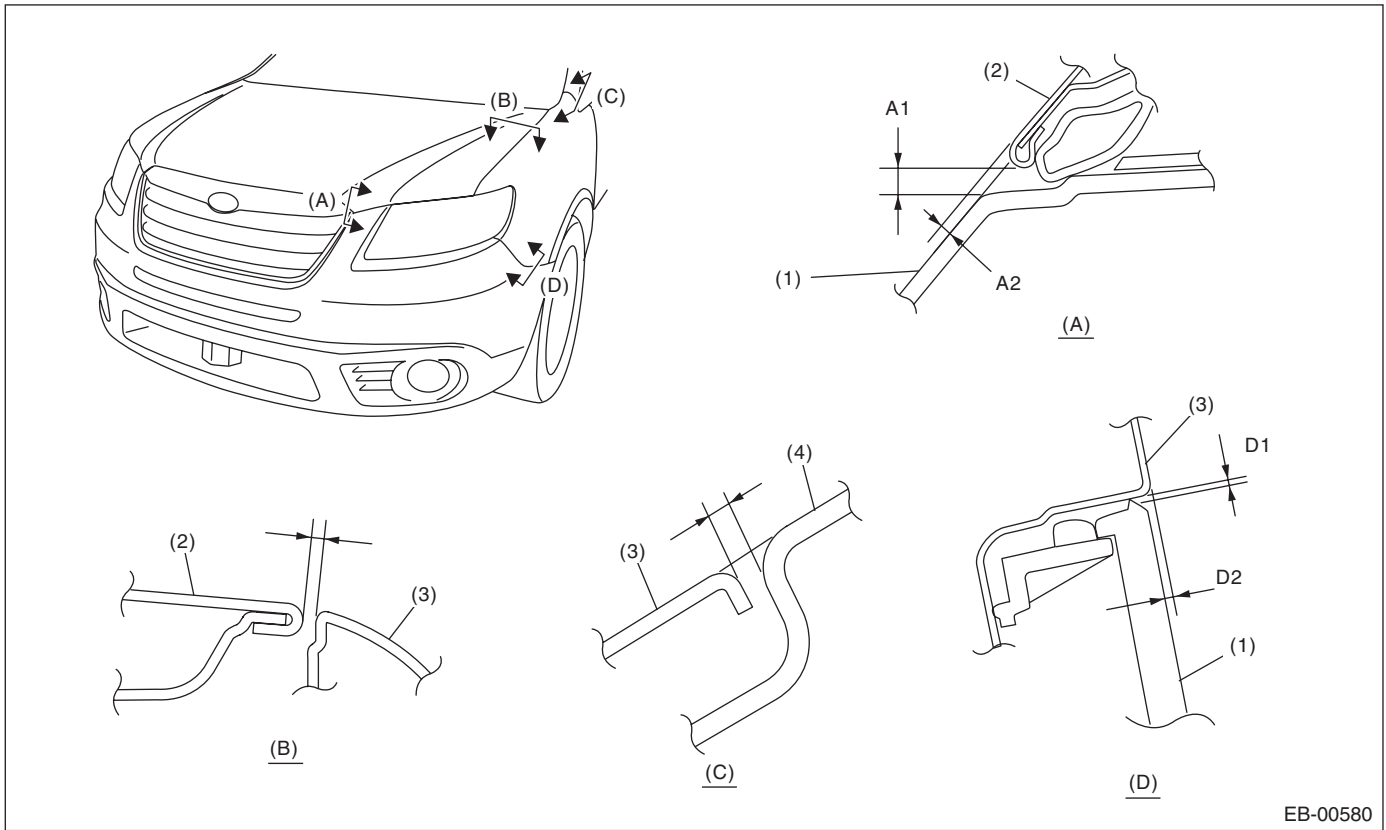
General Description

EXTERIOR BODY PANELS

1. General Description

A: SPECIFICATION

1. FRONT



EB-00580

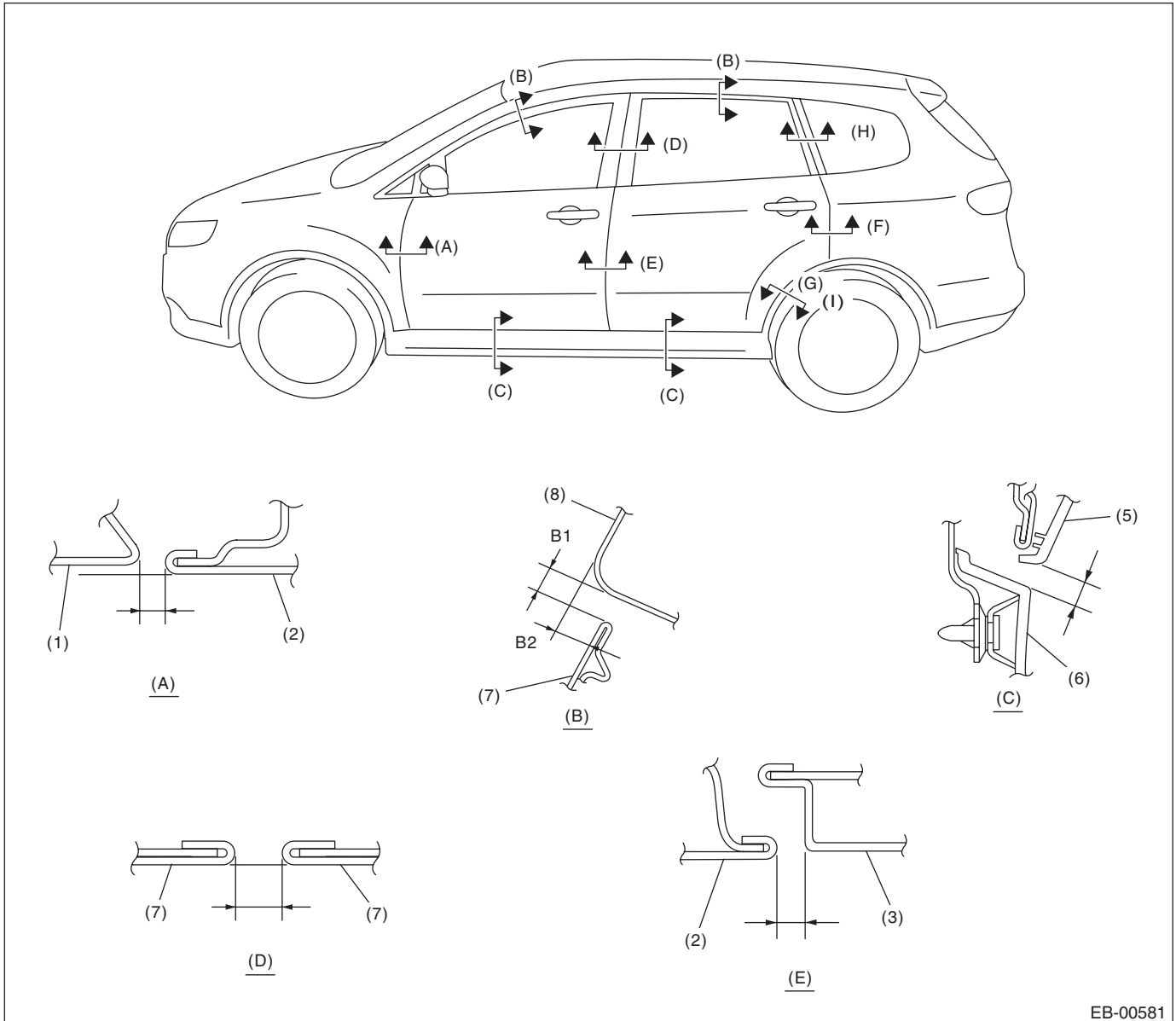
- (1) Front bumper
(2) Front hood panel

- (3) Front fender panel

- (4) Front pillar

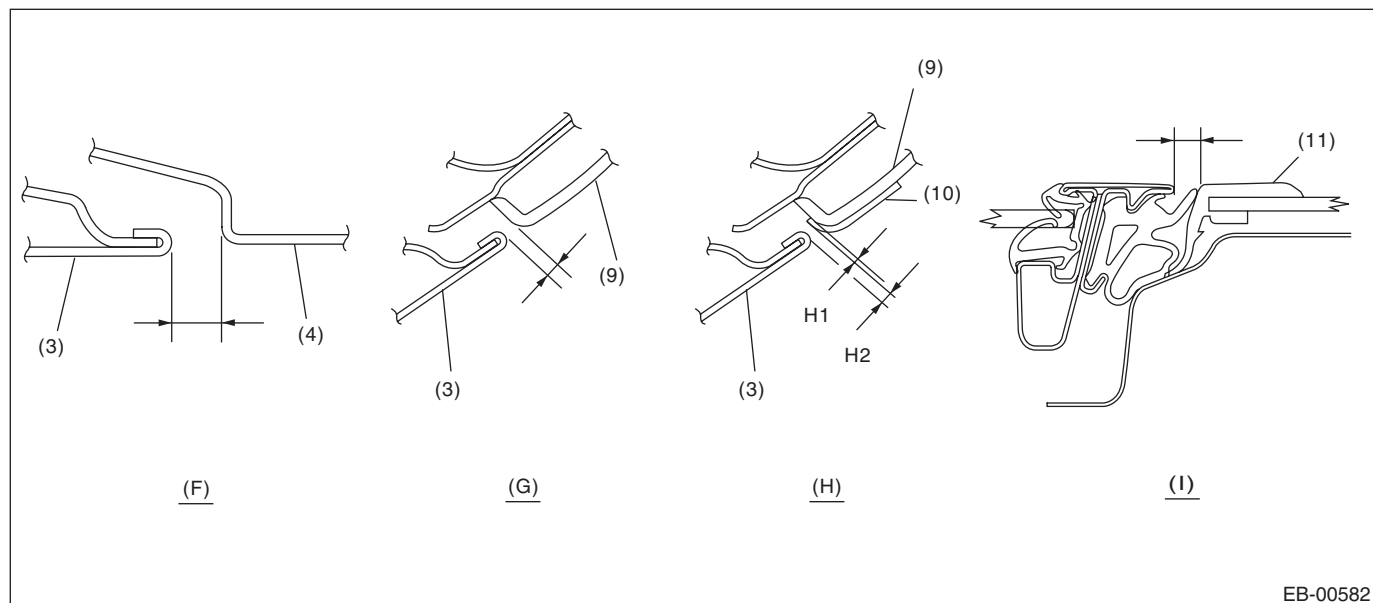
Section	Part	Standard
(A)	Front hood panel to front bumper	A1: 5.0 ± 1.0 mm (0.20 ± 0.04 in) A2: 2.0 ± 1.0 mm (0.08 ± 0.04 in)
(B)	Front hood panel to Front fender panel	3.5 ± 1.0 mm (0.14 ± 0.04 in)
(C)	Front fender panel to Front pillar	2.0 ± 0.5 mm (0.08 ± 0.02 in)
(D)	Front bumper to Front fender panel	D1: $0.3 + 0.7, -0.3$ mm ($0.012 + 0.028, -0.012$ in) D2: $0.7 + 0.5, -0.7$ mm ($0.028 + 0.02, -0.028$ in)

2. SIDE



General Description

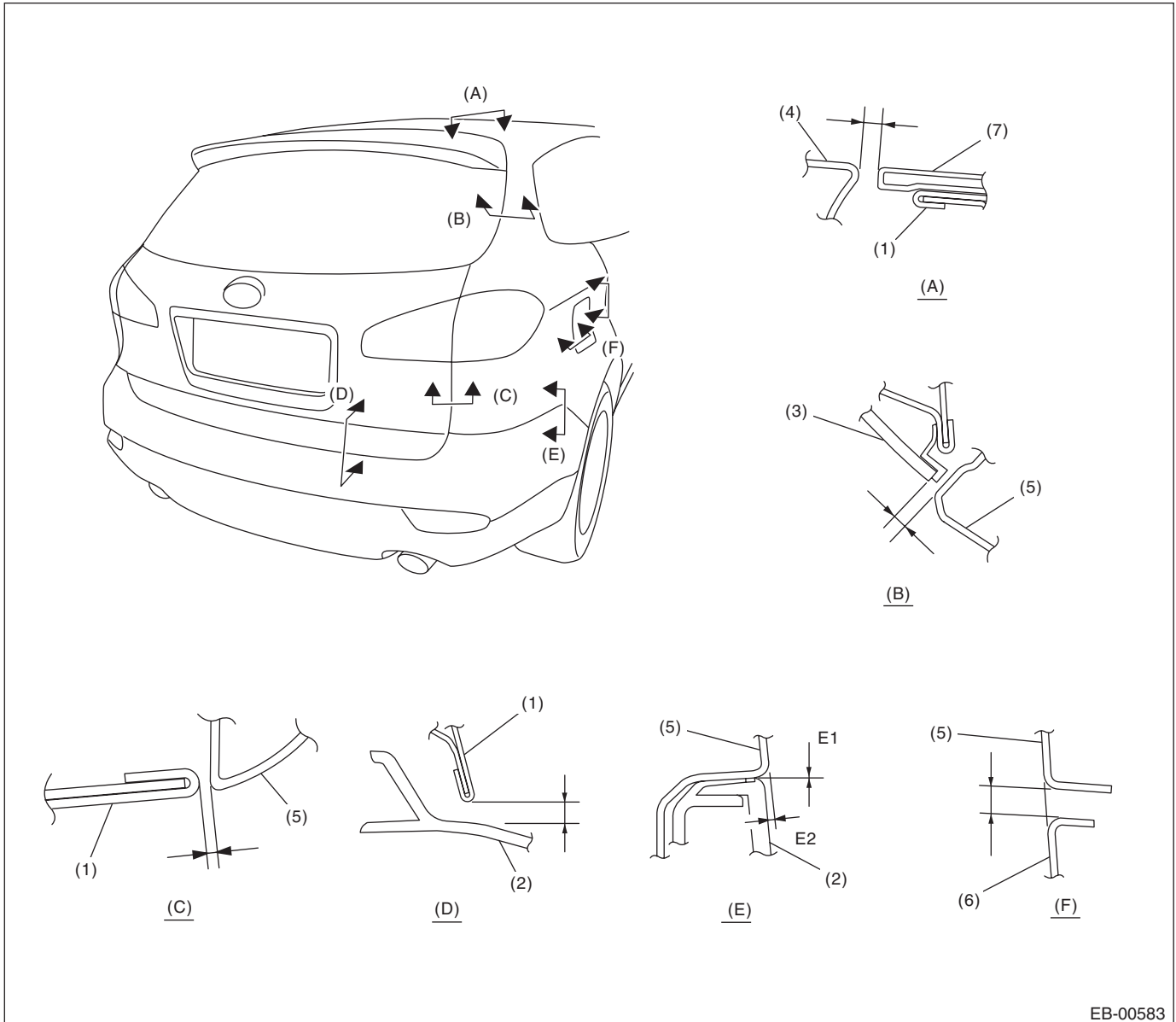
EXTERIOR BODY PANELS



- | | | |
|------------------------|-----------------------|--------------------------|
| (1) Front fender panel | (5) Door garnish | (9) Rear quarter garnish |
| (2) Front door panel | (6) Side sill garnish | (10) Protector film |
| (3) Rear door panel | (7) Door sash | (11) Rear quarter glass |
| (4) Rear quarter panel | (8) Roof panel | |

Section	Part	Standard
(A)	Front fender panel to Front door panel	4.0±1.0 mm (0.16±0.04 in)
(B)	Door sash to Roof panel	B1: 5.0±1.0 mm (0.20±0.04 in) B2: 4.0±1.0 mm (0.16±0.04 in)
(C)	Door garnish to Side sill garnish	8.0±1.5 mm (0.31±0.06 in)
(D)	Front door sash to Rear door sash	5.6±1.0 mm (0.22±0.04 in)
(E)	Front door panel to Rear door panel	4.6±1.0 mm (0.18±0.04 in)
(F)	Rear door panel to Rear quarter panel	4.0±1.0 mm (0.16±0.04 in)
(G)	Rear quarter garnish to Rear door panel	4.0±1.0 mm (0.16±0.04 in)
(H)	Rear quarter garnish to Rear door panel (monotone vehicle)	H1: 0.4±1.0 mm (0.02±0.04 in) H2: 3.6±1.0 mm (0.14±0.04 in)
(I)	Between rear door sash to Rear quarter glass	5.0±1.0 mm (0.20±0.04 in)

3. REAR



- | | | |
|---------------------|------------------------|---------------------|
| (1) Rear gate panel | (4) Roof panel | (6) Fuel filler lid |
| (2) Rear bumper | (5) Rear quarter panel | (7) Roof spoiler |
| (3) Rear gate glass | | |

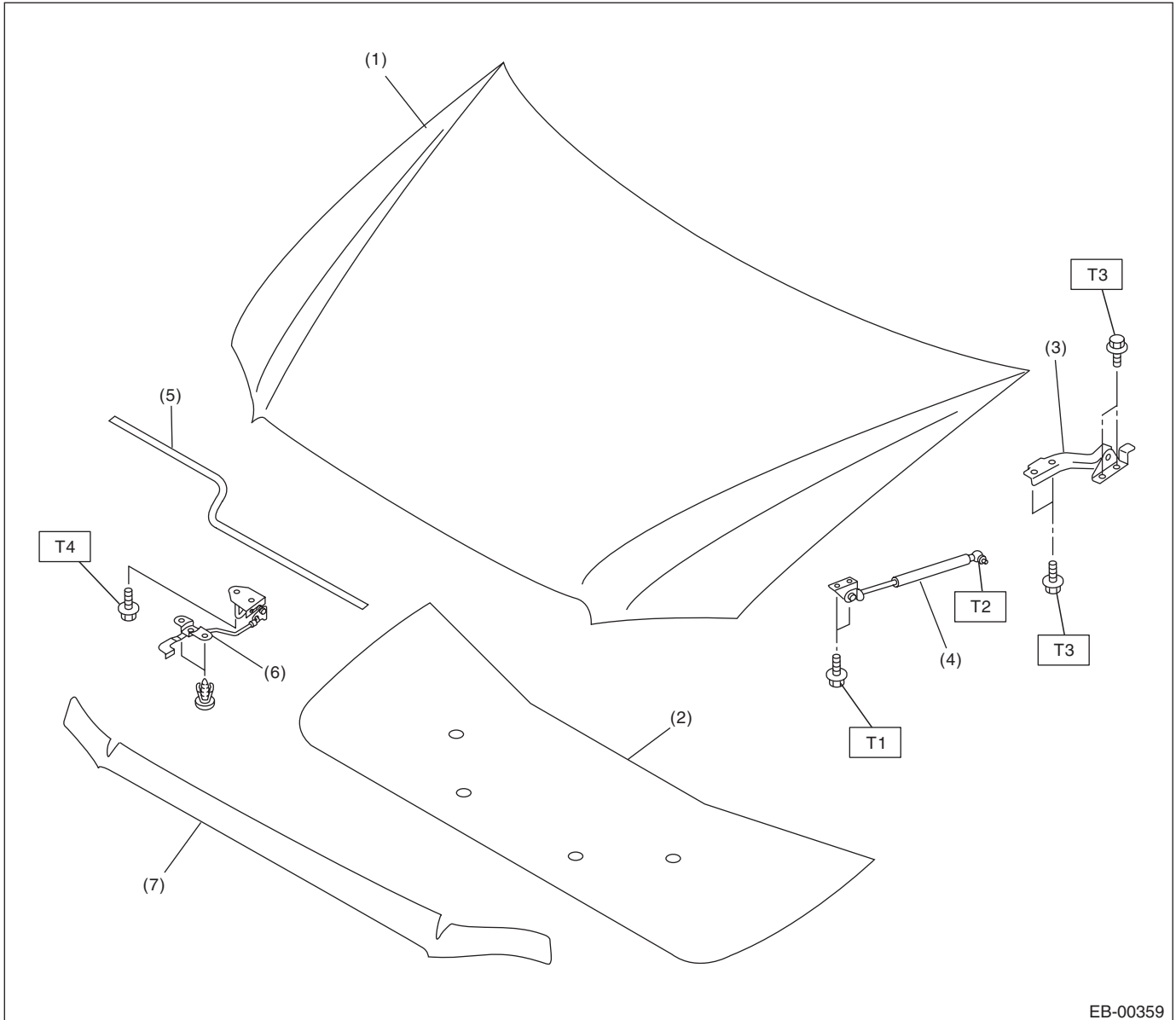
Section	Part	Standard
(A)	Roof panel to Roof spoiler	5.5±1.0 mm (0.22±0.04 in)
(B)	Rear gate glass to Rear quarter panel	5.5±1.5 mm (0.22±0.06 in)
(C)	Rear gate panel to Rear quarter panel	4.0±1.0 mm (0.16±0.04 in)
(D)	Rear gate panel to Rear bumper	7.0±1.5 mm (0.28±0.06 in)
(E)	Rear quarter panel to Rear bumper	E1: 0.3+0.7, -0.3 mm (0.012+0.028, -0.012 in) E2: 0.7+0.5, -0.7 mm (0.028+0.02, -0.028 in)
(F)	Area around the fuel filler lid to Quarter panel	3.5±0.5 mm (0.14±0.02 in)

General Description

EXTERIOR BODY PANELS

B: COMPONENT

1. FRONT HOOD



EB-00359

- | | |
|--------------------------|------------------------------------|
| (1) Front hood panel | (5) Front hood seal |
| (2) Front hood insulator | (6) Front hood release handle ASSY |
| (3) Front hood hinge | (7) Front grille seal |
| (4) Front hood damper | |

Tightening torque: N·m (kgf-m, ft-lb)

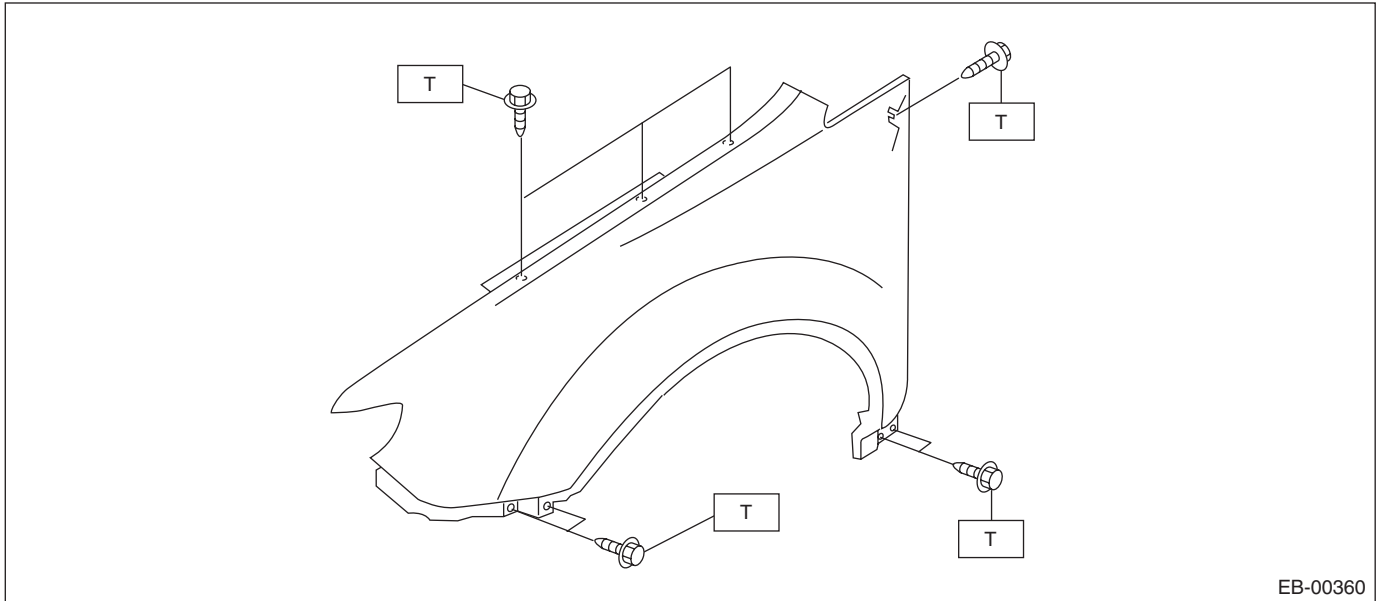
T1: 7.5 (0.76, 5.5)

T2: 20 (2.04, 14.5)

T3: 24.5 (2.5, 18.1)

T4: 33 (3.4, 24.5)

2. FRONT FENDER PANEL



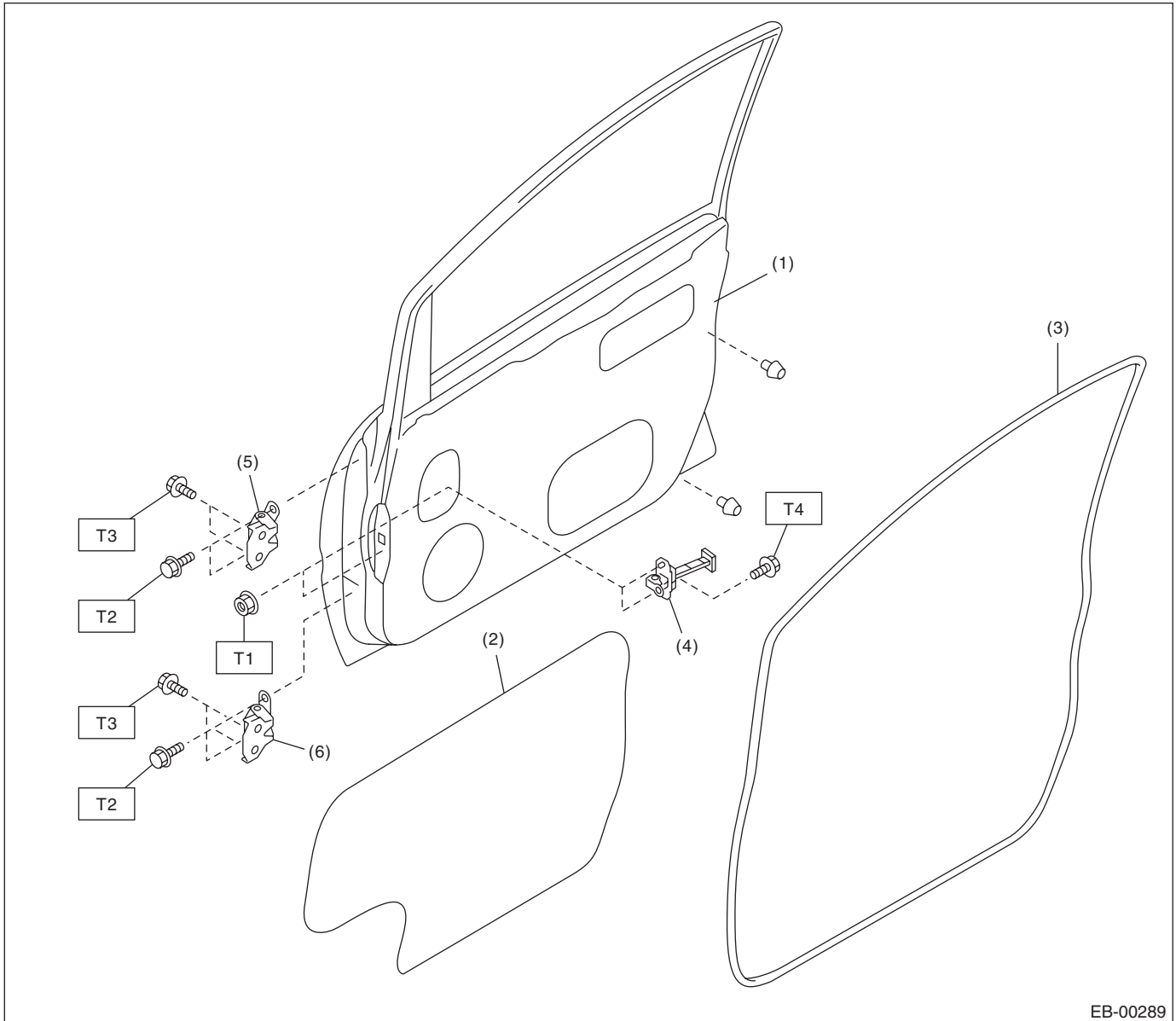
Tightening torque:N·m (kgf-m, ft-lb)

T: 7.4 (0.75, 5.5)

General Description

EXTERIOR BODY PANELS

3. FRONT DOOR PANEL



EB-00289

- (1) Front door panel
- (2) Sealing cover
- (3) Front door weather strip

- (4) Checker
- (5) Upper hinge
- (6) Lower hinge

Tightening torque: N·m (kgf-m, ft-lb)

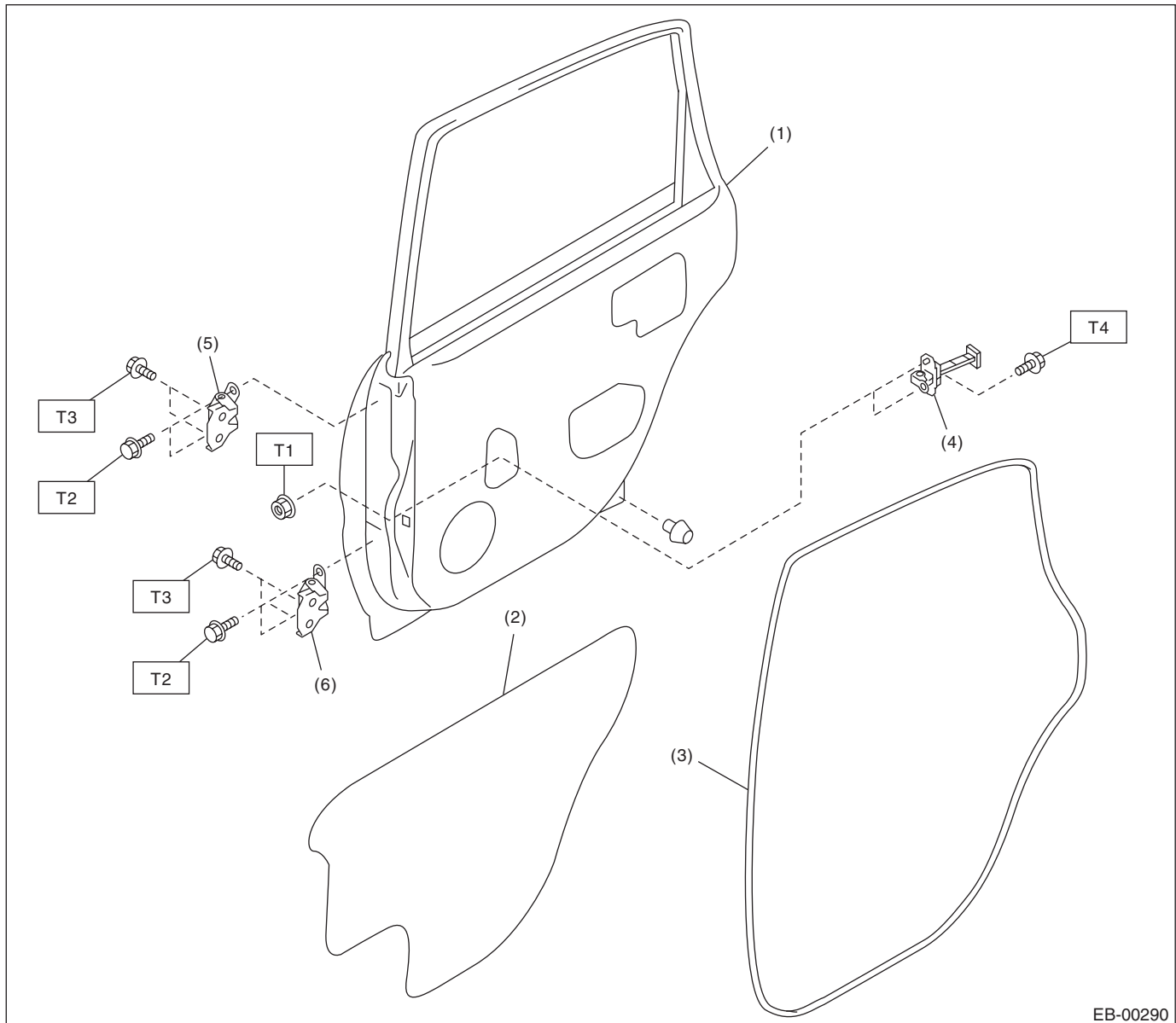
T1: 7.4 (0.75, 5.5)

T2: 24.5 (2.5, 18.1)

T3: 29.4 (3.0, 21.7)

T4: 32.3 (3.3, 23.8)

4. REAR DOOR PANEL



EB-00290

- (1) Rear door panel
- (2) Sealing cover
- (3) Rear door weather strip

- (4) Checker
- (5) Upper hinge
- (6) Lower hinge

Tightening torque: N·m (kgf-m, ft-lb)

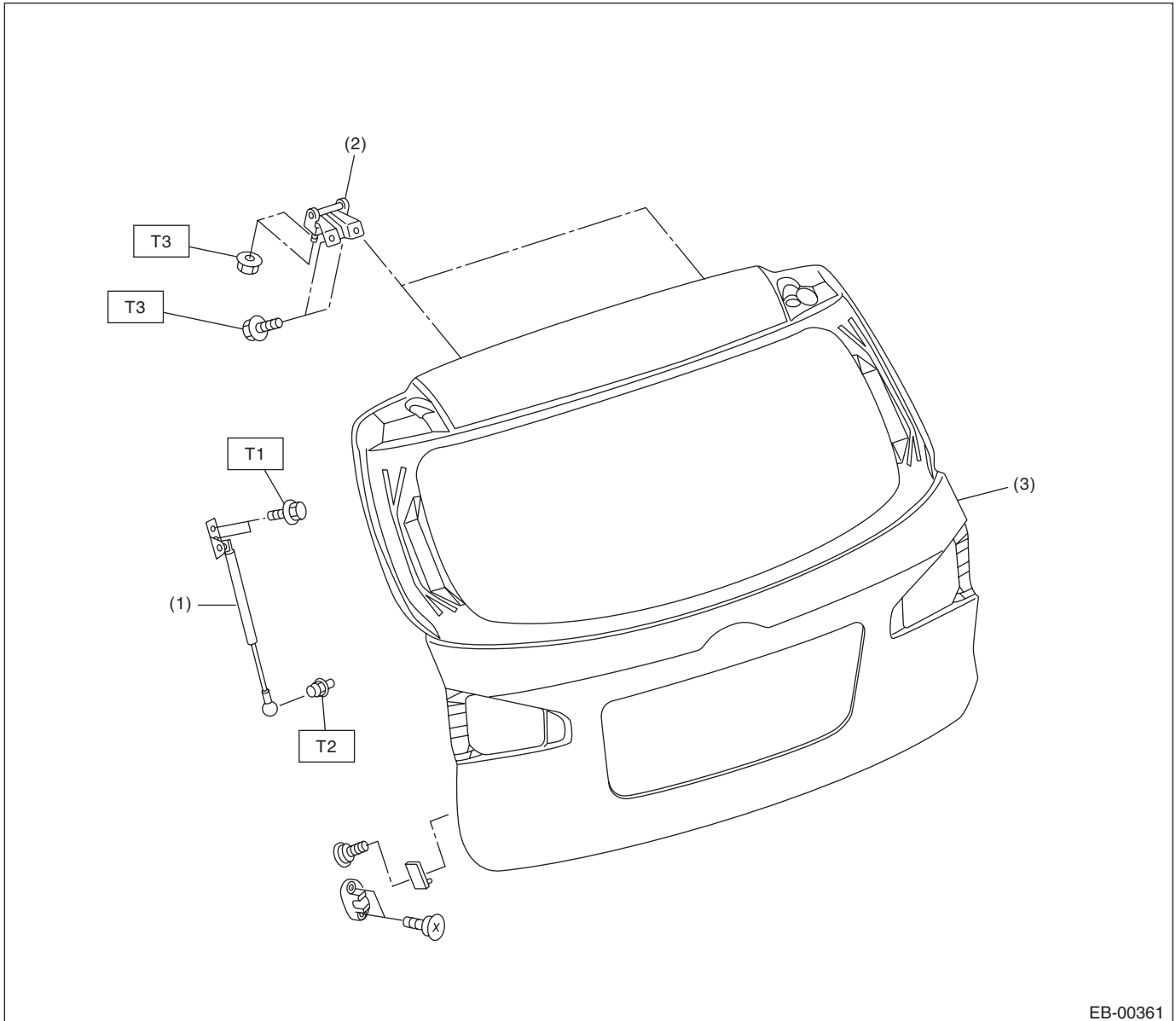
T1: 7.4 (0.75, 5.5)

T2: 24.5 (2.5, 18.1)

T3: 29.4 (3.0, 21.7)

T4: 32.3 (3.3, 23.8)

5. REAR GATE PANEL



- (1) Rear gate damper stay
- (2) Hinge
- (3) Rear gate panel

Tightening torque: N·m (kgf-m, ft-lb)

T1: 16 (1.63, 11.5)

T2: 20 (2.04, 14.5)

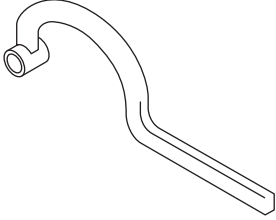
T3: 25 (2.6, 18.4)

C: CAUTION

- Exterior body panels are heavy. Do not drop and damage the panels. During removal and installation, do not damage the panel painting surface.
- While removing mounting bolts, using assistance devices such as a support jack will help support the panel.
- Be careful not to lose small parts.

D: PREPARATION TOOL

1. SPECIAL TOOL

ILLUSTRATION	TOOL NUMBER	DESCRIPTION	REMARKS
 <p>ST-925610000</p>	925610000	WRENCH	Used for removing and installing door hinge.

2. GENERAL TOOL

TOOL NAME	REMARKS
Support jack	Used for supporting door panel.
Clip remover	Used for removing various types of clips