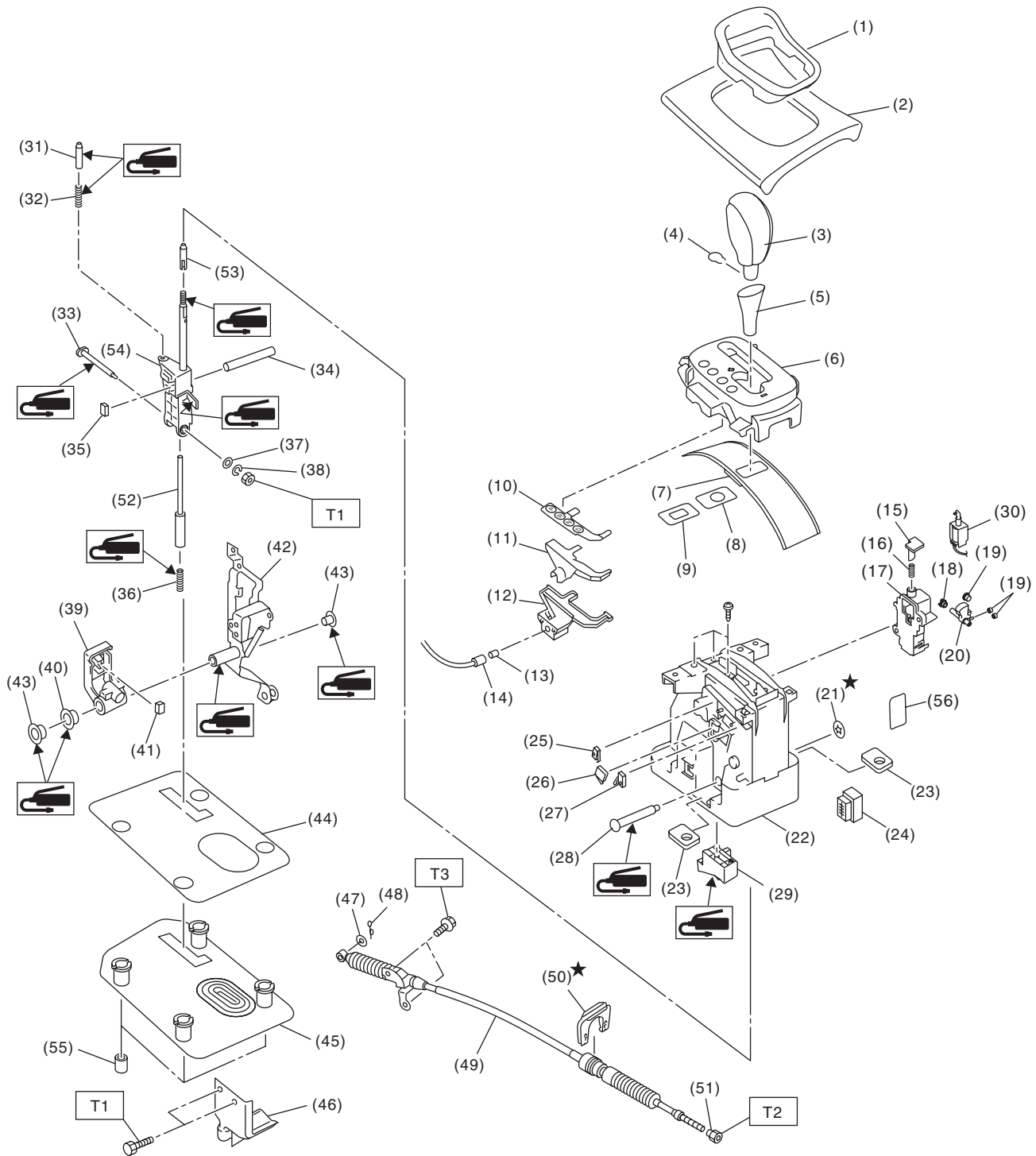


### 1. General Description

#### A: COMPONENT

#### 1. AT SELECT LEVER



# General Description

## CONTROL SYSTEMS

- |                         |                          |                         |
|-------------------------|--------------------------|-------------------------|
| (1) Ring indicator      | (22) Base ASSY           | (42) Arm ASSY           |
| (2) Front cover         | (23) Spacer              | (43) Bushing            |
| (3) Grip ASSY           | (24) Harness connector   | (44) Dust cover bracket |
| (4) Grip pin            | (25) Shift-up switch     | (45) Dust cover         |
| (5) Grip cover          | (26) "P" range switch    | (46) Cable bracket      |
| (6) Indicator ASSY      | (27) Shift-down switch   | (47) Washer             |
| (7) Shift blind         | (28) Shaft               | (48) Cotter pin         |
| (8) Blind A             | (29) Detent check block  | (49) Select cable       |
| (9) Blind B             | (30) Shift lock solenoid | (50) Clamp              |
| (10) Position plate     | (31) Check sheet pole    | (51) Adjusting nut A    |
| (11) Plate light guide  | (32) Spring              | (52) Button rod         |
| (12) Valve case         | (33) Select shaft        | (53) Pusher             |
| (13) Indicator bulb     | (34) Shift position pin  | (54) Selector arm ASSY  |
| (14) Valve harness      | (35) Shift button switch | (55) Spacer             |
| (15) Release rod        | (36) Spring              | (56) Seat               |
| (16) Spring             | (37) Washer              |                         |
| (17) Lock lever bracket | (38) Spring washer       |                         |
| (18) Lock lever bushing | (39) Tube cross plate    |                         |
| (19) Bushing            | (40) Bushing             |                         |
| (20) Lock lever         | (41) Mode change switch  |                         |
| (21) Clamp              |                          |                         |

**Tightening torque:N·m (kgf-m, ft-lb)**

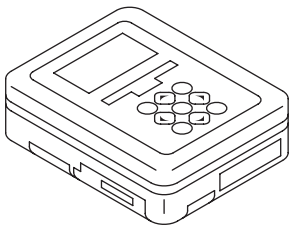
**T1: 5.1 (0.5, 3.8)**

**T2: 7.5 (0.8, 5.5)**

**T3: 18 (1.8, 13.3)**

## B: PREPARATION TOOL

### 1. SPECIAL TOOL

| ILLUSTRATION  | TOOL NUMBER | DESCRIPTION                   | REMARKS                                    |
|---|-------------|-------------------------------|--|
|  <p>ST1B022XU0</p> | 1B022XU0    | SUBARU SELECT MONITOR III KIT | Troubleshooting for the electrical system. |

#### **C: CAUTION**

- Wear appropriate work clothing, including a cap, protective goggles and protective shoes when performing any work.
- Remove contamination including dirt and corrosion before removal, installation or disassembly.
- Keep the disassembled parts in order and protect them from dust and dirt.
- Before removal, installation or disassembly, be sure to clarify the failure. Avoid unnecessary removal, installation, disassembly and replacement.
- Use SUBARU genuine fluid, grease etc. or equivalent. Do not mix fluid, grease, etc. of different grades or manufacturers.
- Be sure to tighten fasteners including bolts and nuts to the specified torque.
- Place shop jacks or rigid racks at the specified points.
- Apply grease onto sliding or revolving surfaces before installation.
- Before installing the O-ring or snap ring, apply a sufficient amount of fluid to avoid damage and deformation.
- Before securing a part in a vise, place cushioning material such as wood blocks, aluminum plate or cloth between the part and the vise.
- Before disconnecting electrical connectors, be sure to disconnect the negative terminal from battery.