

# General Description

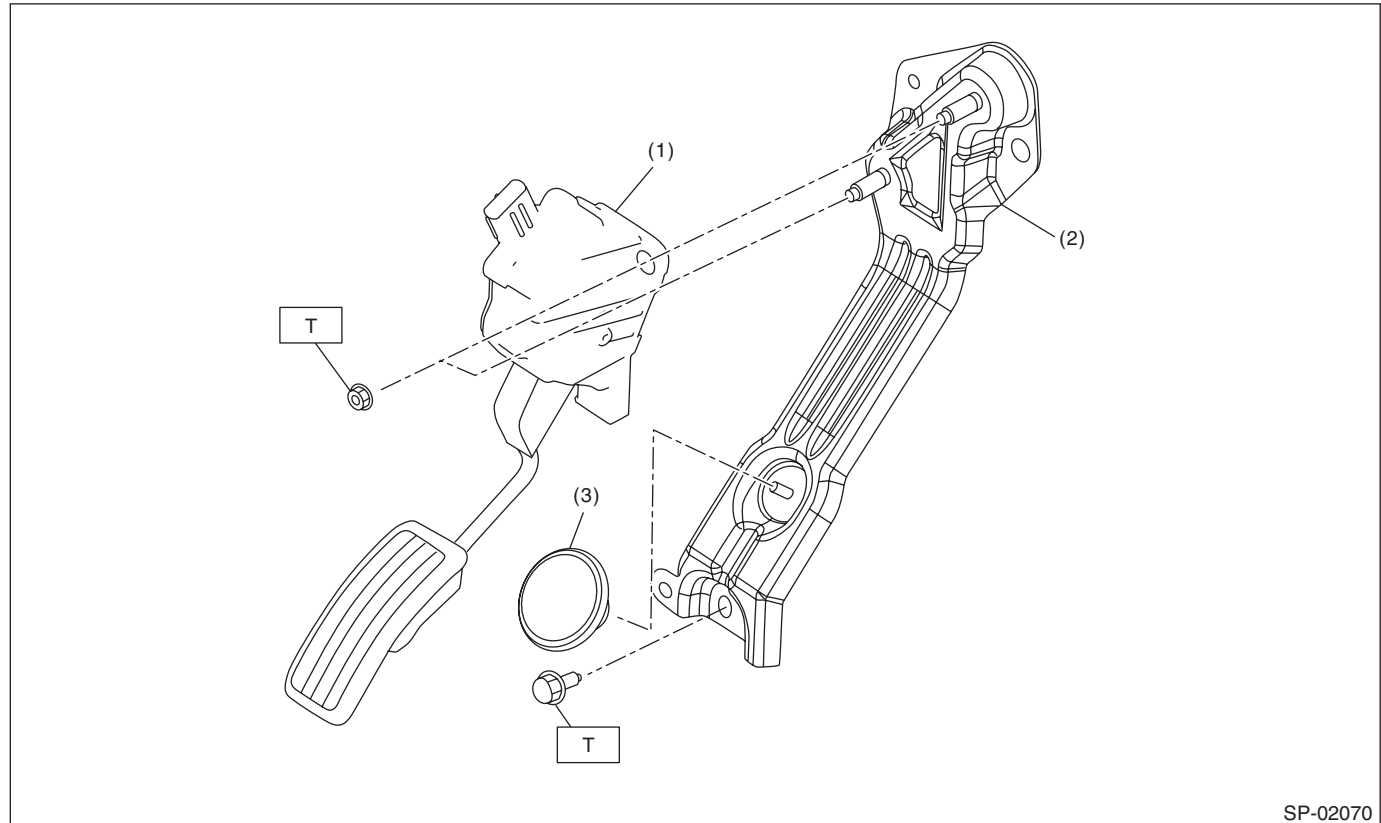
## SPEED CONTROL SYSTEMS

### 1. General Description

#### A: SPECIFICATION

Accelerator pedal	Stroke	At pedal pad	49 — 58 mm (1.93 — 2.28 in)
-------------------	--------	--------------	-----------------------------

#### B: COMPONENT



SP-02070

- (1) Accelerator pedal ASSY  
(2) Accelerator pedal bracket

- (3) Accelerator stopper

**Tightening torque: N·m (kgf-m, ft-lb)**  
**T: 18 (1.8, 13.3)**

#### C: CAUTION

- Wear appropriate work clothing, including a cap, protective goggles and protective shoes when performing any work.
- Remove contamination including dirt and corrosion before removal or installation.
- Keep the parts in order and protect them from dust and dirt.
- Before removal or installation, be sure to clarify the failure. Avoid unnecessary removal, installation, disassembly and replacement.
- Vehicle components are extremely hot after driving. Be wary of receiving burns from heated parts.
- Be sure to tighten fasteners including bolts and nuts to the specified torque.
- Place shop jacks or rigid racks at the specified points.
- Before disconnecting connectors of sensors or units, be sure to disconnect the ground cable from the battery.