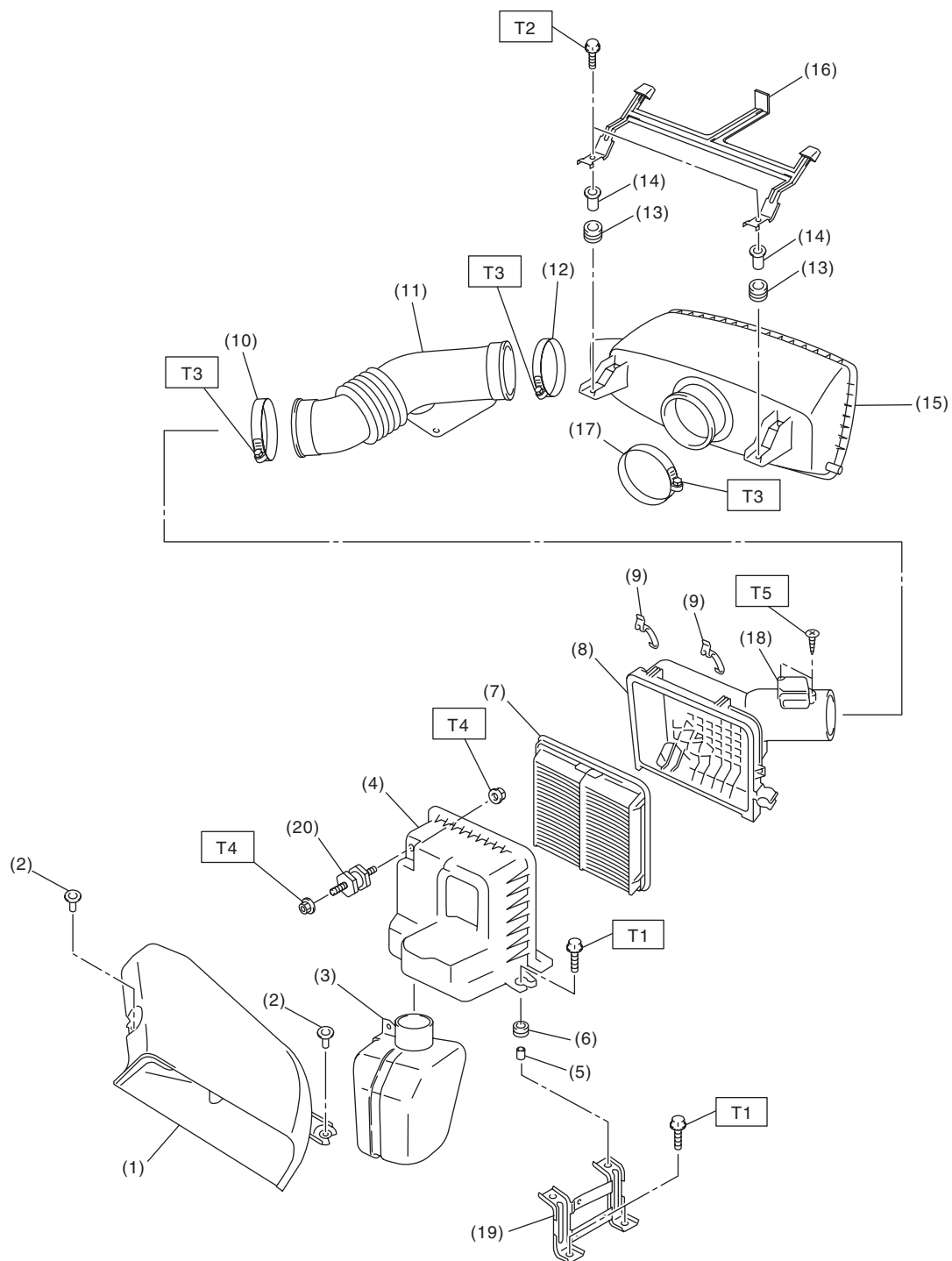


# General Description

INTAKE (INDUCTION)

## 1. General Description

### A: COMPONENT



IN-02239

IN(H6DO)-2

## General Description

INTAKE (INDUCTION)

(1) Air intake duct	(11) Intake boot	(19) Air cleaner bracket
(2) Clip	(12) Clamp	(20) Cushion
(3) Resonator chamber	(13) Cushion	
(4) Air cleaner case (front)	(14) Spacer	
(5) Spacer	(15) Air intake chamber	
(6) Cushion	(16) Collector cover bracket	
(7) Air cleaner element	(17) Clamp	
(8) Air cleaner case (rear)	(18) Mass air flow and intake air temperature sensor	
(9) Clip		
(10) Clamp		

---

**Tightening torque:N·m (kgf-m, ft-lb)**

**T1: 6.0 (0.6, 4.4)**

**T2: 6.5 (0.66, 4.8)**

**T3: 3.0 (0.3, 2.2)**

**T4: 7.5 (0.76, 5.5)**

**T5: 1.0 (0.10, 0.7)**

---

### B: CAUTION

- Wear appropriate work clothing, including a cap, protective goggles and protective shoes when performing any work.
- Remove contamination including dirt and corrosion before removal, installation or disassembly.
- Keep the disassembled parts in order and protect them from dust and dirt.
- Before removal, installation or disassembly, be sure to clarify the failure. Avoid unnecessary removal, installation, disassembly and replacement.
- Vehicle components are extremely hot after driving. Be wary of receiving burns from heated parts.
- Be sure to tighten fasteners including bolts and nuts to the specified torque.
- Place shop jacks or rigid racks at the specified points.
- Before disconnecting connectors of sensors or units, be sure to disconnect the ground cable from the battery.