

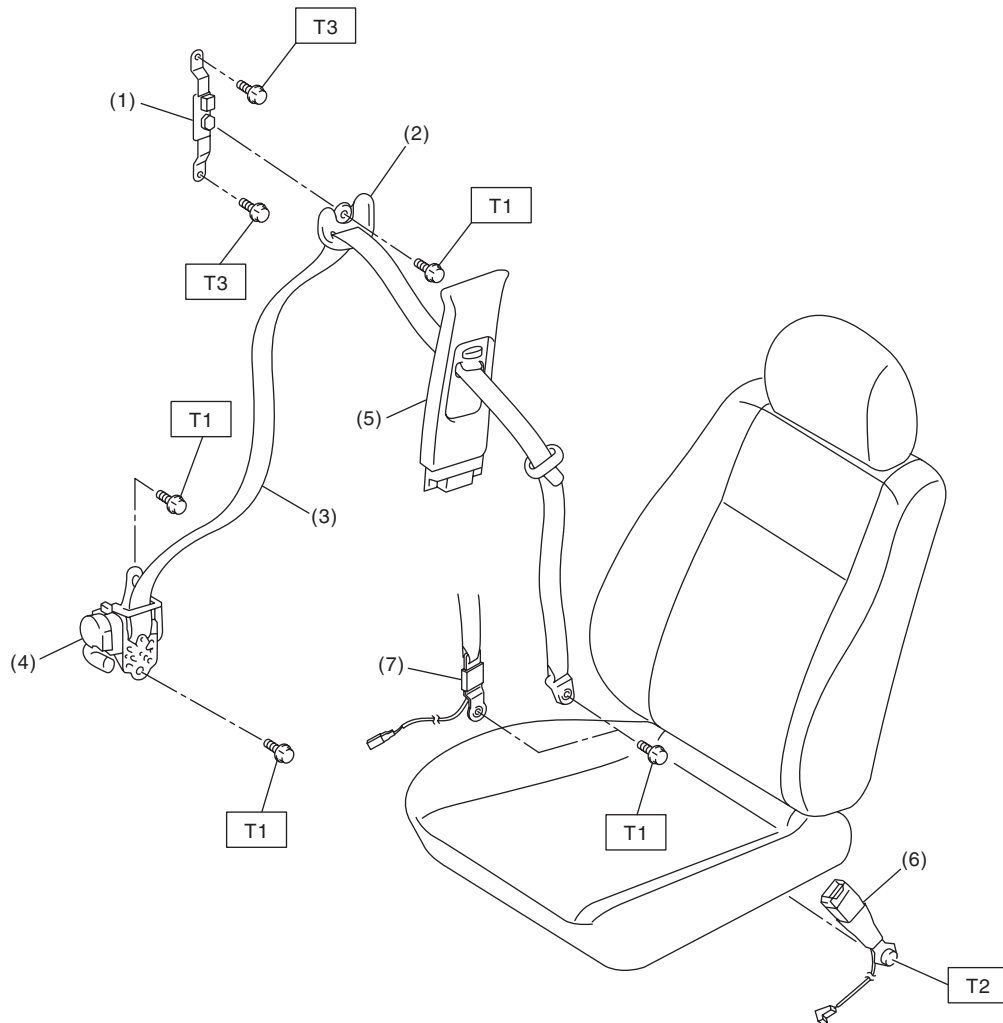
General Description

SEAT BELT SYSTEM

1. General Description

A: COMPONENT

1. FRONT SEAT BELT



SB-00303

- | | |
|----------------------------|---|
| (1) Adjustable anchor ASSY | (5) Center pillar upper trim |
| (2) Shoulder anchor | (6) Inner seat belt ASSY |
| (3) Outer seat belt ASSY | (7) Belt tension sensor (passenger's side only) |
| (4) Seat belt retractor | |

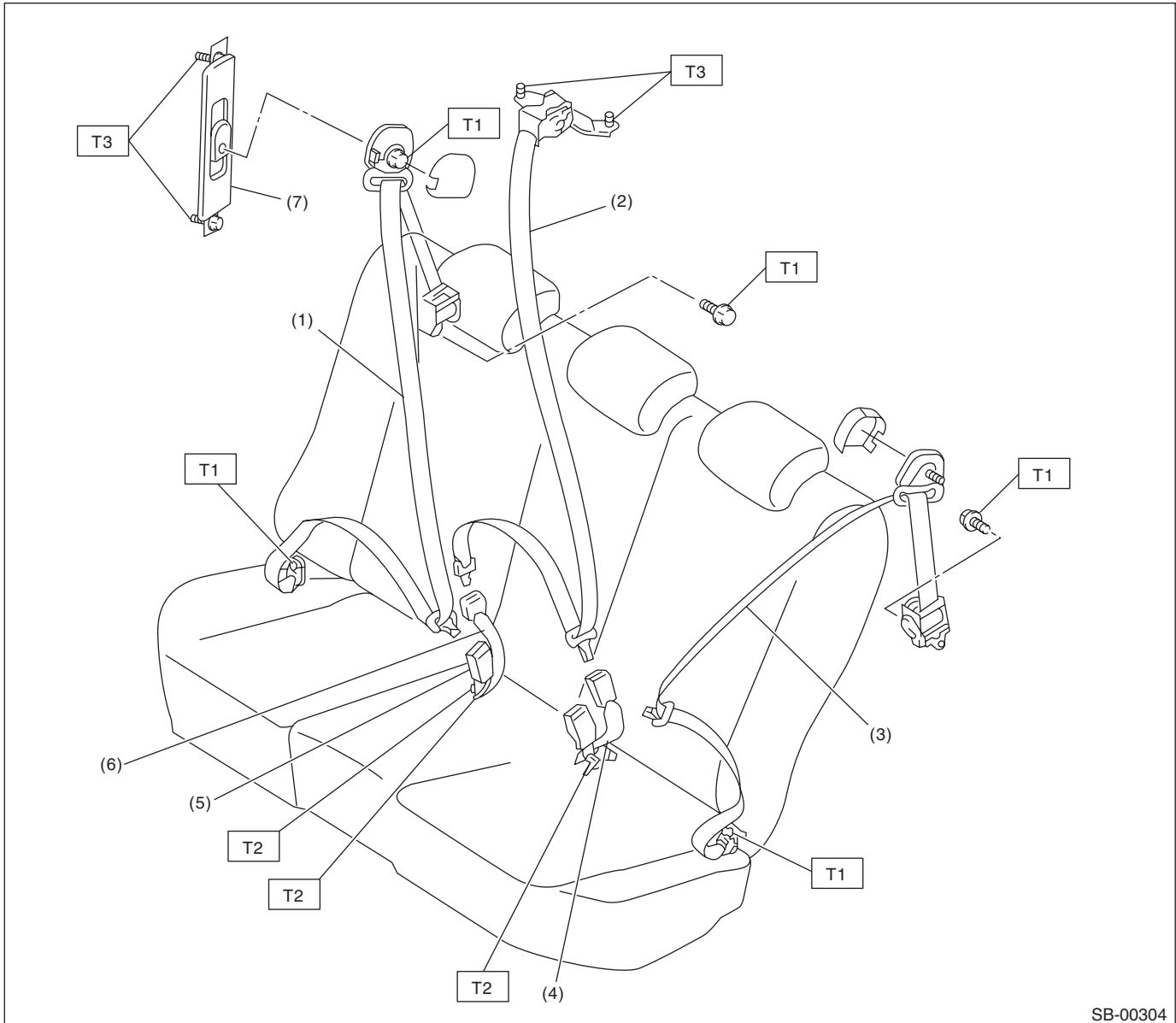
Tightening torque: N·m (kgf-m, ft-lb)

T1: 30 (3.1, 22)

T2: 38 (3.9, 28)

T3: 53 (5.4, 39)

2. SECOND SEAT BELT



SB-00304

- | | |
|------------------------------------|---|
| (1) Outer seat belt RH ASSY | (5) Inner seat belt RH ASSY |
| (2) Shoulder seat belt center ASSY | (6) Shoulder seat belt center buckle ASSY |
| (3) Outer seat belt LH ASSY | (7) Adjustable anchor ASSY |
| (4) Inner seat belt LH ASSY | |

Tightening torque: N·m (kgf-m, ft-lb)

T1: 30 (3.1, 22)

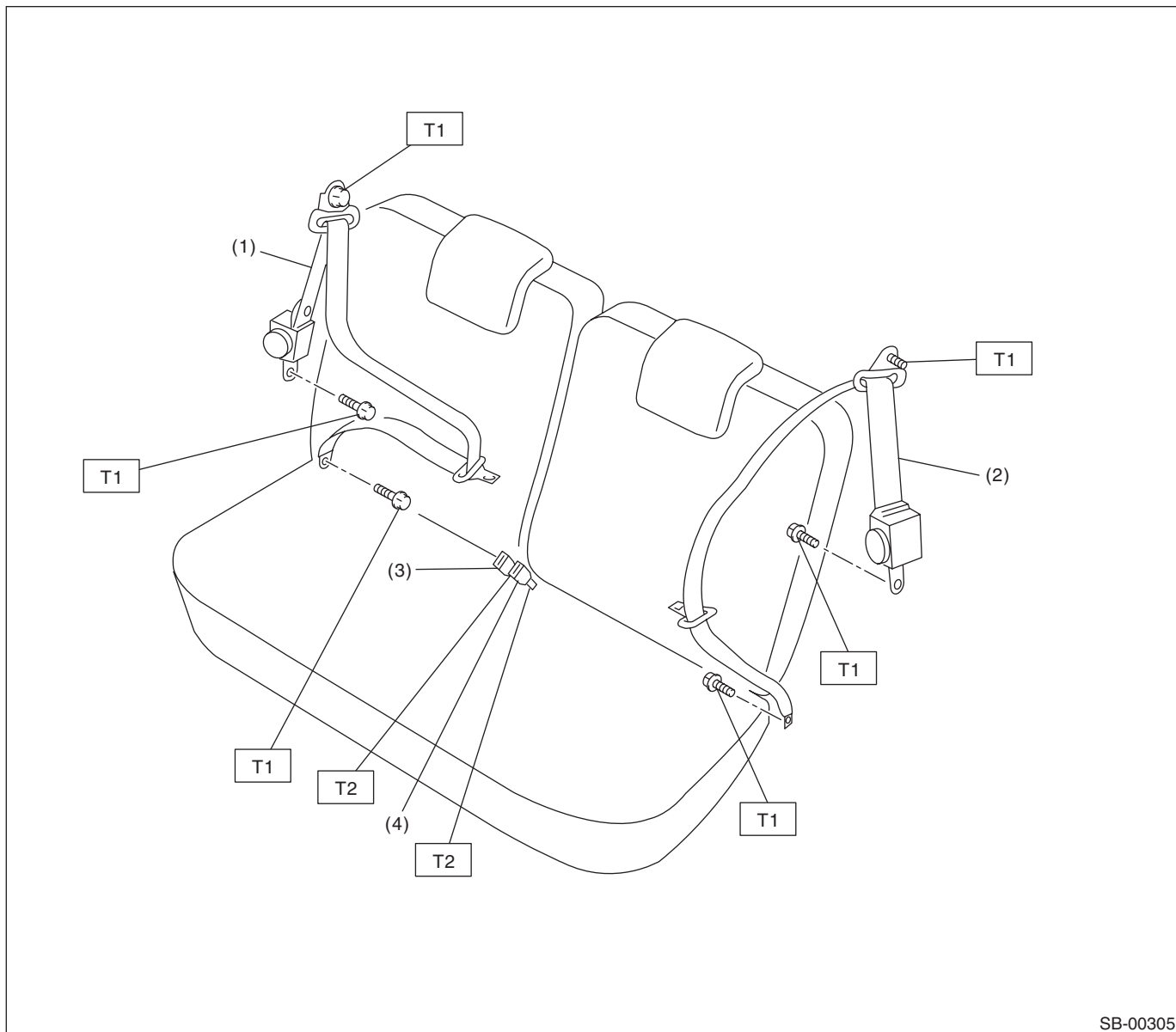
T2: 38 (3.9, 28)

T3: 53 (5.4, 39)

General Description

SEAT BELT SYSTEM

3. THIRD SEAT BELT



(1) Outer seat belt RH ASSY

(2) Outer seat belt LH ASSY

(3) Inner seat belt RH ASSY

(4) Inner seat belt LH ASSY

Tightening torque: N·m (kgf-m, ft-lb)

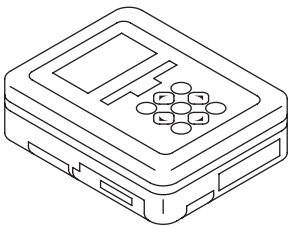
T1: 30 (3.1, 22)

T2: 38 (3.9, 28)

B: CAUTION

- Before starting the work, turn the ignition switch to OFF, disconnect the battery ground cable and wait for 20 seconds or more.
- The pretensioner system has a backup power source. The pretensioner might deploy if you do not wait for 20 seconds or more before starting work.
- Do not drop or apply any impact to the pretensioner.
- If oil, grease or water gets on the pretensioner, wipe it off immediately with a dry cloth.
- Do not expose the pretensioner to high temperature or flame.
- Do not allow current to flow through or voltage to reach the pretensioner. Do not use a circuit tester to check resistance of the pretensioner.
- Do not disassemble or attempt to repair the pretensioner. If it is dented, cracked or deformed, replace it with a new part.
- Do not use the airbag or pretensioner parts from other vehicles. Always replace parts with new parts.
- When handling a seat belt with deployed pretensioner, wear gloves and goggles. Wash your hands afterwards.
- Do not reuse a seat belt with deployed pretensioner.
- If material from the airbag enters the eyes or contacts skin during deployment, wash it away with clean water, and then consult a doctor.

C: PREPARATION TOOL**1. SPECIAL TOOL**

ILLUSTRATION	TOOL NUMBER	DESCRIPTION	REMARKS
 ST1B022XU0	1B022XU0	SUBARU SELECT MONITOR III KIT	Used for setting of each function and troubleshooting for electrical system.

2. GENERAL TOOL

TOOL NAME	REMARKS
Circuit tester	Used for inspecting the seat belt warning system.
TORX® T50	Used for removing and installing the inner seat belt assembly.