

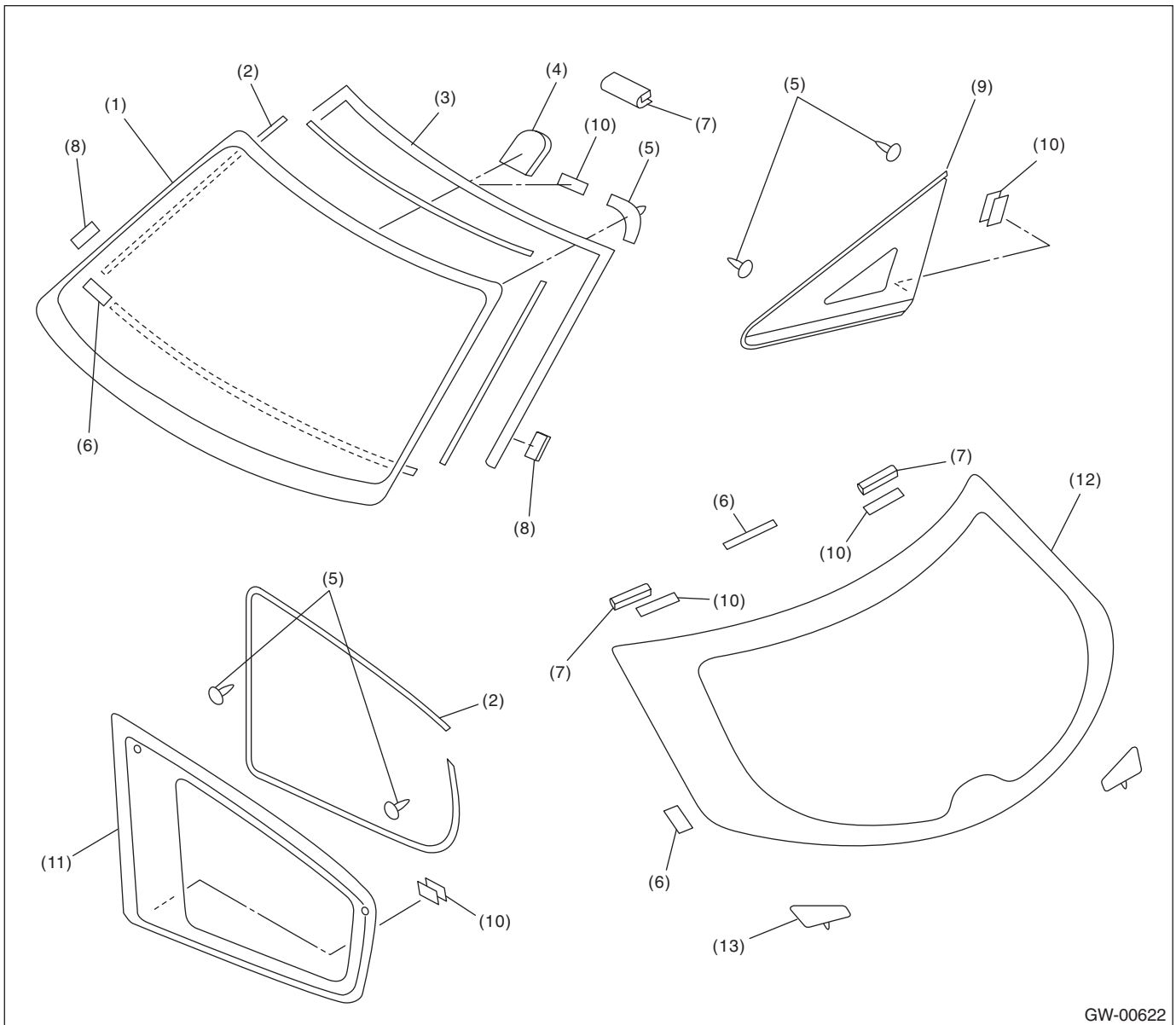
# General Description

GLASS/WINDOWS/MIRRORS

## 1. General Description

### A: COMPONENT

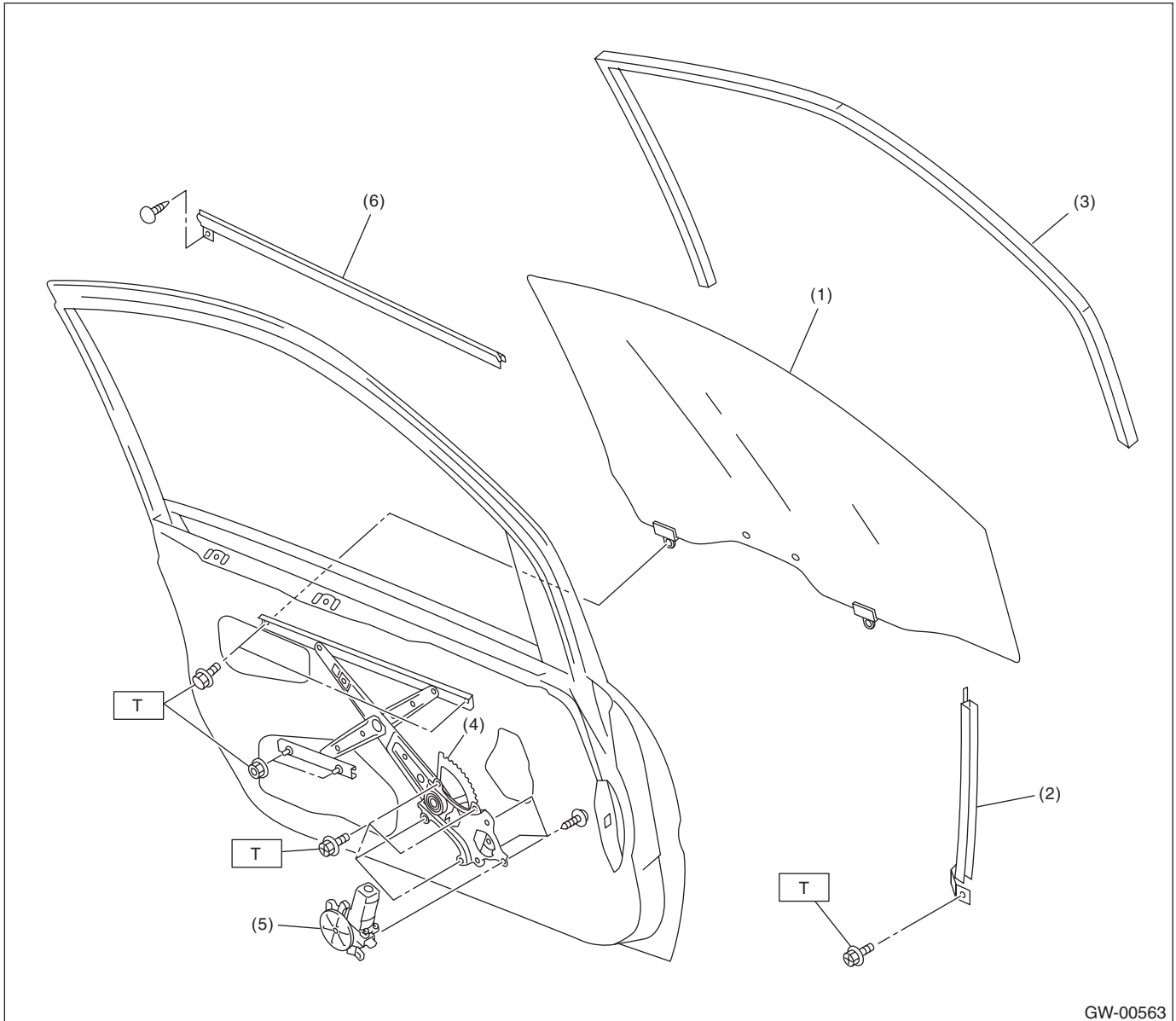
#### 1. FIXED GLASS



GW-00622

- |                           |                         |                         |
|---------------------------|-------------------------|-------------------------|
| (1) Windshield glass      | (6) Spacer              | (10) Fastener           |
| (2) Dam rubber            | (7) Fastener            | (11) Rear quarter glass |
| (3) Molding front         | (8) Seal                | (12) Rear gate glass    |
| (4) Rearview mirror mount | (9) Front quarter glass | (13) Glass clip pin     |
| (5) Locating pin          |                         |                         |

## 2. FRONT DOOR GLASS



- |                      |                    |
|----------------------|--------------------|
| (1) Glass            | (4) Regulator ASSY |
| (2) Door sash        | (5) Motor ASSY     |
| (3) Glass run rubber | (6) Weather strip  |

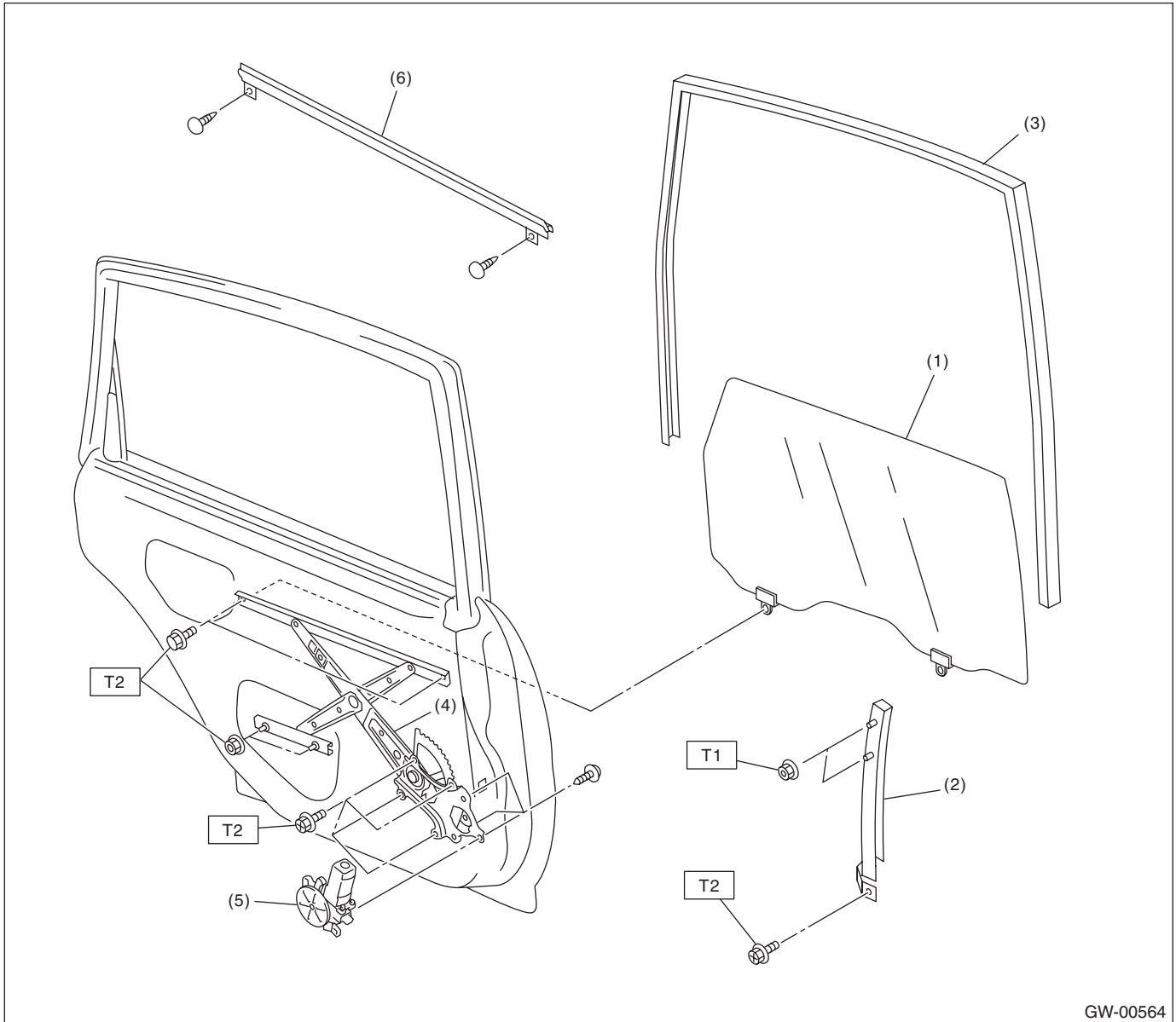
**Tightening torque: N·m (kgf-m, ft-lb)**

**T: 7.4 (0.75, 5.5)**

# General Description

## GLASS/WINDOWS/MIRRORS

### 3. REAR DOOR GLASS



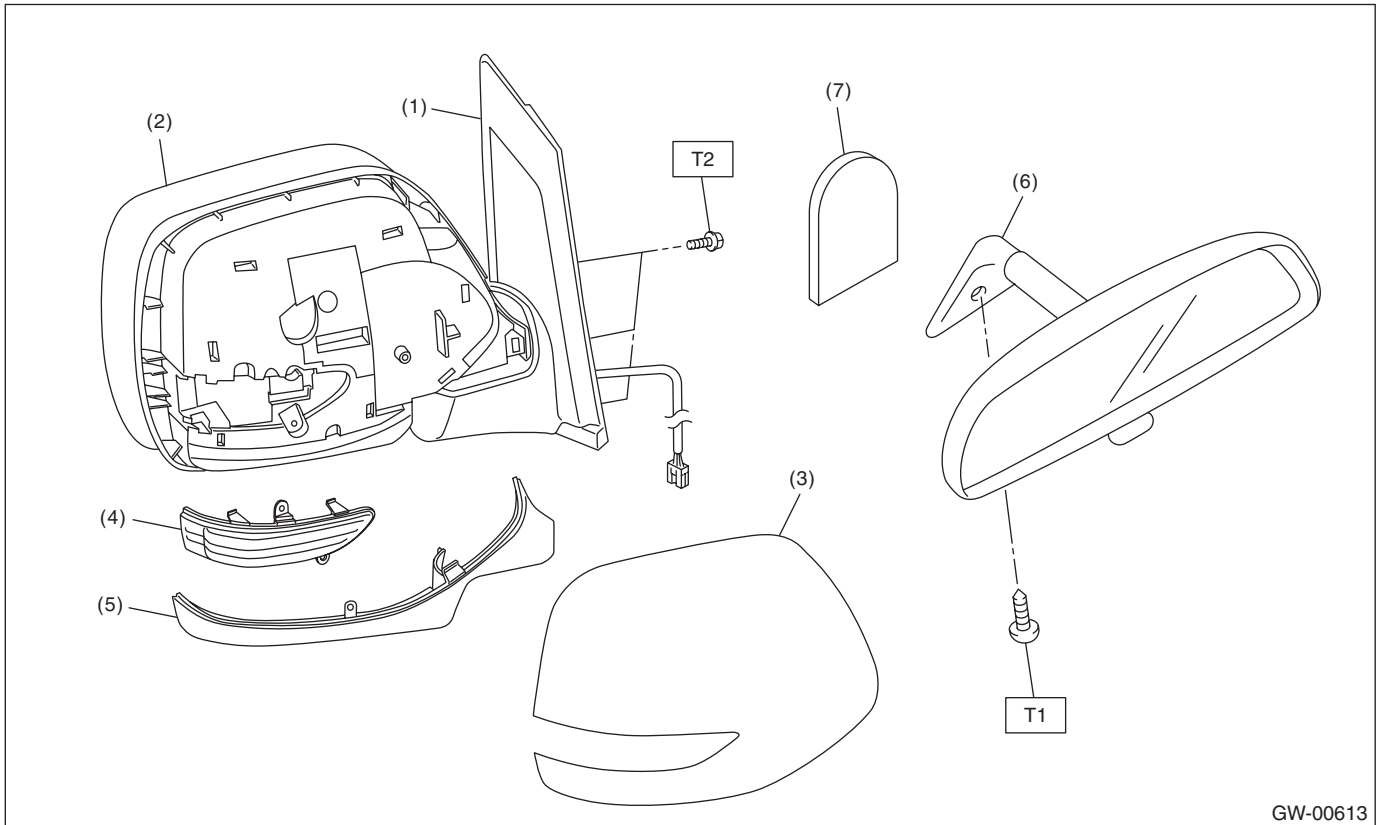
- |                      |                    |
|----------------------|--------------------|
| (1) Glass            | (4) Regulator ASSY |
| (2) Door sash        | (5) Motor ASSY     |
| (3) Glass run rubber | (6) Weather strip  |

**Tightening torque: N·m (kgf-m, ft-lb)**

**T1: 4.4 (0.45, 3.3)**

**T2: 7.4 (0.75, 5.5)**

## 4. MIRROR



- |                            |                       |
|----------------------------|-----------------------|
| (1) Outer mirror           | (5) Mirror body cover |
| (2) Mirror                 | (6) Rearview mirror   |
| (3) Scalp cap              | (7) Mount             |
| (4) Side turn signal light |                       |

**Tightening torque: N·m (kgf-m, ft-lb)**

**T1: 2 (0.2, 1.5)**

**T2: 4.5 (0.46, 3.32)**

### B: CAUTION

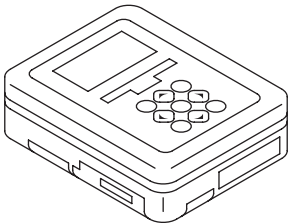
- When electrical connectors are disconnected, always conduct an operational check after connecting them again.
- Avoid impact and damage to the glass.

## General Description

GLASS/WINDOWS/MIRRORS

### C: PREPARATION TOOL

#### 1. SPECIAL TOOL

ILLUSTRATION	TOOL NUMBER	DESCRIPTION	REMARKS
 ST1B022XU0	1B022XU0	SUBARU SELECT MONITOR III KIT	Used for setting of each function and trouble-shooting for electrical system.

#### 2. GENERAL TOOL

TOOL NAME	REMARKS
Circuit tester	Used for checking voltage and continuity.
Piano wire	Used for removing the window glass.
Windshield glass knife	Used for removing the window glass.
TORX® T20	Used for removing and installing the rearview mirror.