

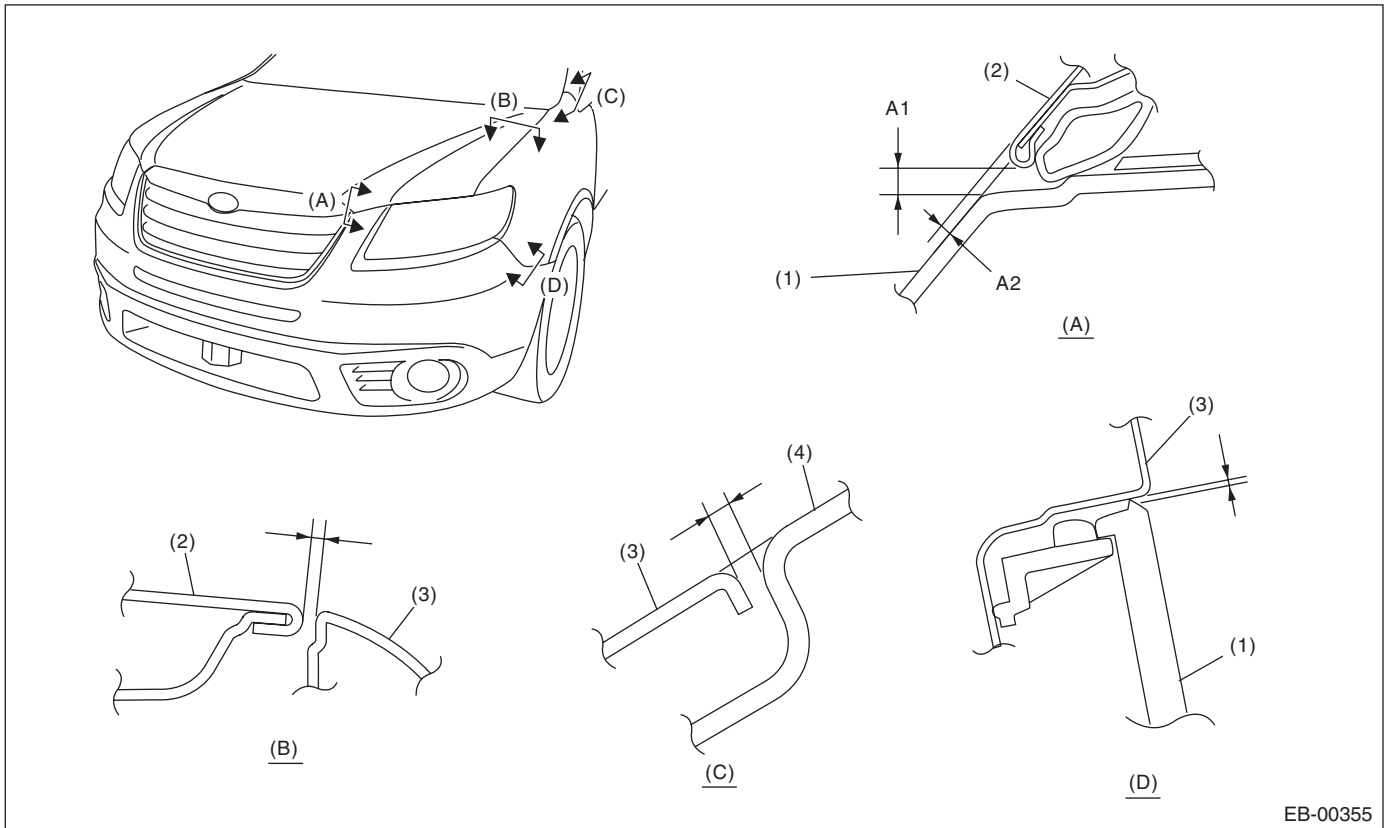
General Description

EXTERIOR BODY PANELS

1. General Description

A: SPECIFICATION

1. FRONT



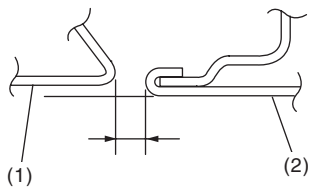
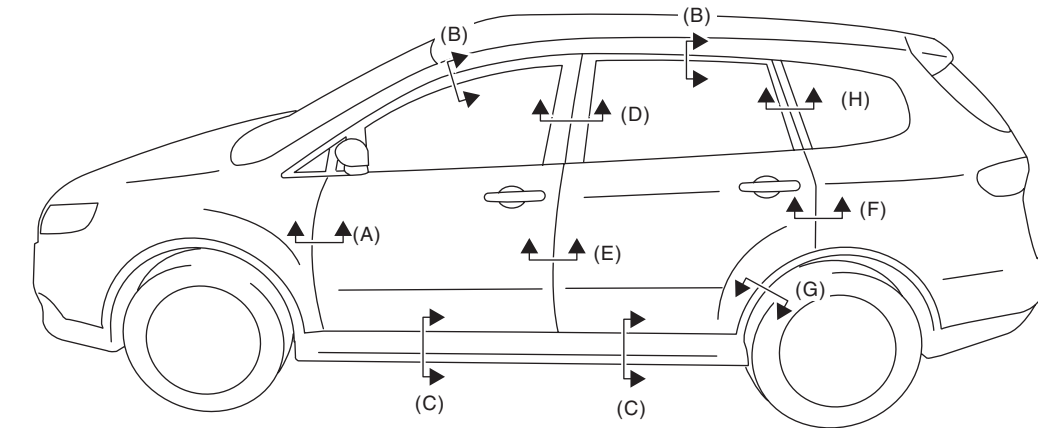
- (1) Front bumper
(2) Front hood panel

- (3) Front fender panel

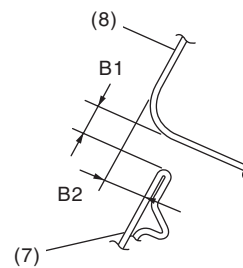
- (4) Front pillar

Section	Part	Specification
(A)	Front hood panel to Front bumper	A1: 5.0 ± 1.0 mm (0.20 ± 0.04 in) A2: 2.5 ± 1.0 mm (0.10 ± 0.04 in)
(B)	Front hood panel to Front bumper	3.5 ± 1.0 mm (0.14 ± 0.04 in)
(C)	Front fender panel to Front pillar	2.0 ± 0.5 mm (0.08 ± 0.02 in)
(D)	Front bumper to Front fender panel	$0.3 + 1.0$ mm ($0.012 + 0.04$ in)

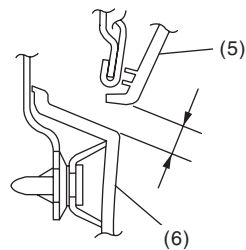
2. SIDE



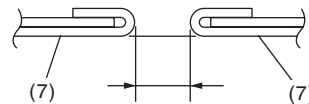
(A)



(B)



(C)

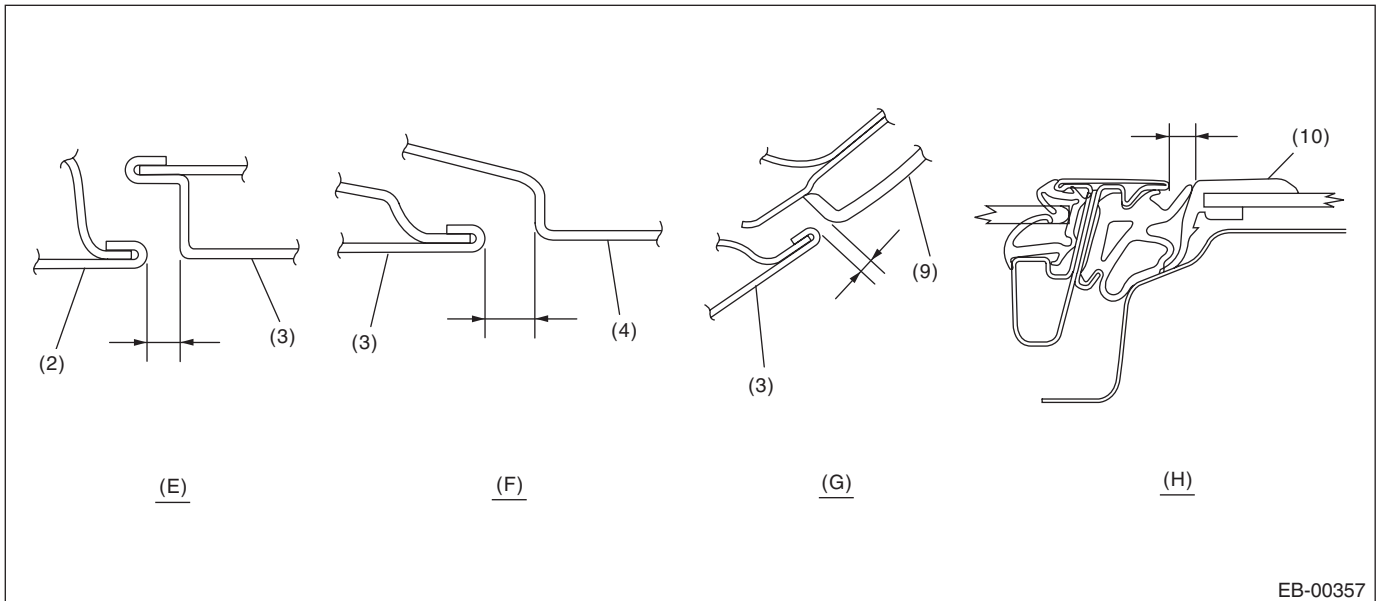


(D)

EB-00356

General Description

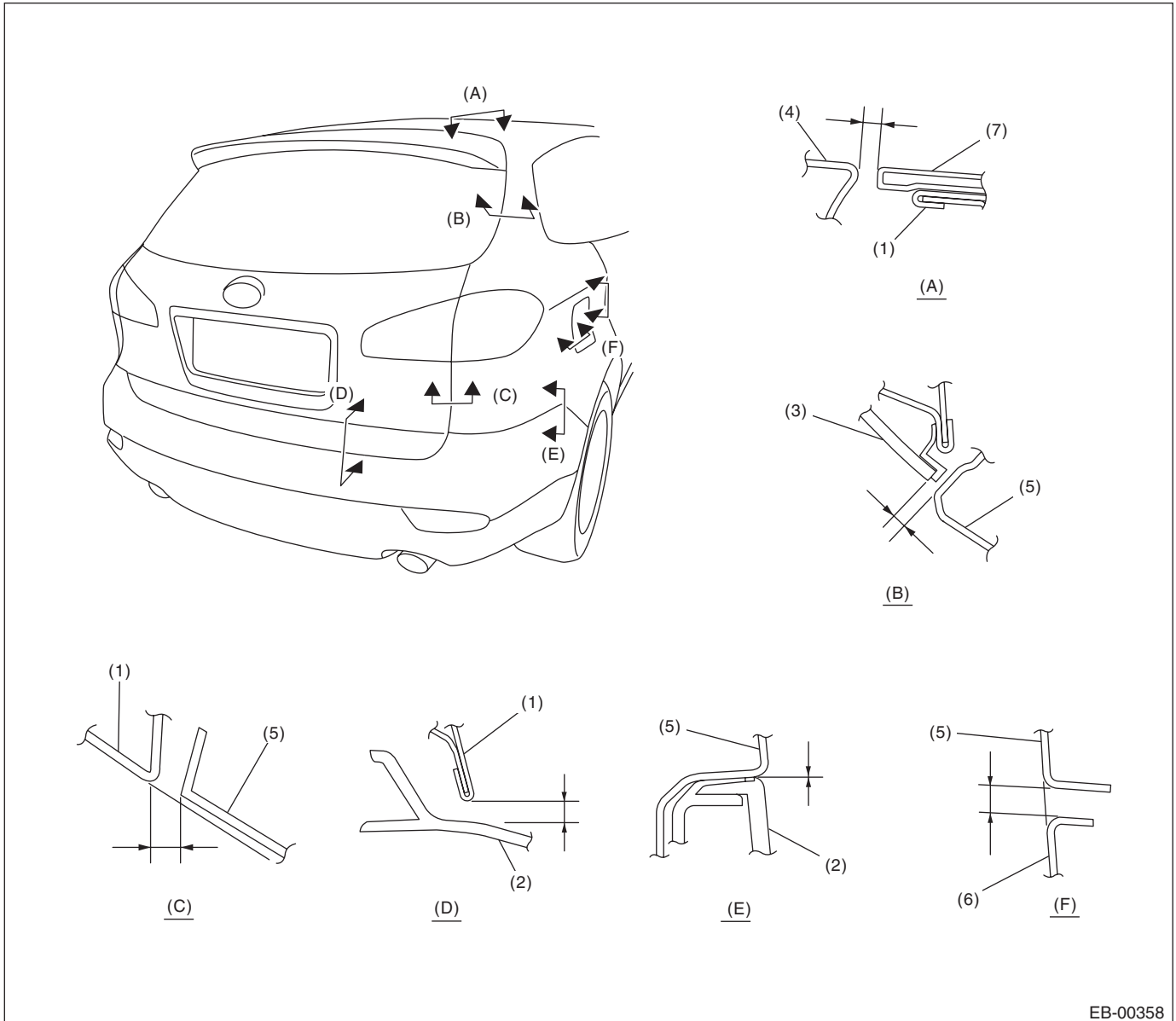
EXTERIOR BODY PANELS



- | | | |
|------------------------|-----------------------|--------------------------|
| (1) Front fender panel | (5) Door garnish | (8) Roof panel |
| (2) Front door panel | (6) Side sill garnish | (9) Rear quarter garnish |
| (3) Rear door panel | (7) Door sash | (10) Rear quarter glass |
| (4) Rear quarter panel | | |

Section	Part	Specification
(A)	Front fender panel to Front door panel	4.0±1.0 mm (0.16±0.04 in)
(B)	Door sash to Roof panel	C1: 5.0±1.0 mm (0.20±0.04 in) C2: 4.0±1.0 mm (0.16±0.04 in)
(C)	Door garnish to Side sill garnish	8.0±1.5 mm (0.31±0.06 in)
(D)	Front door sash to Rear door sash	5.6±1.0 mm (0.22±0.04 in)
(E)	Front door panel to Rear door panel	4.6±1.0 mm (0.18±0.04 in)
(F)	Rear door panel to Rear quarter panel	4.0±1.0 mm (0.16±0.04 in)
(G)	Rear quarter garnish to Rear door panel	4.0±1.0 mm (0.16±0.04 in)
(H)	Between rear door sash to Rear quarter glass	5.0±1.0 mm (0.20±0.04 in)

3. REAR



- | | | |
|---------------------|------------------------|--------------------------|
| (1) Rear gate panel | (4) Roof panel | (6) Fuel filler flap lid |
| (2) Rear bumper | (5) Rear quarter panel | (7) Roof spoiler |
| (3) Rear gate glass | | |

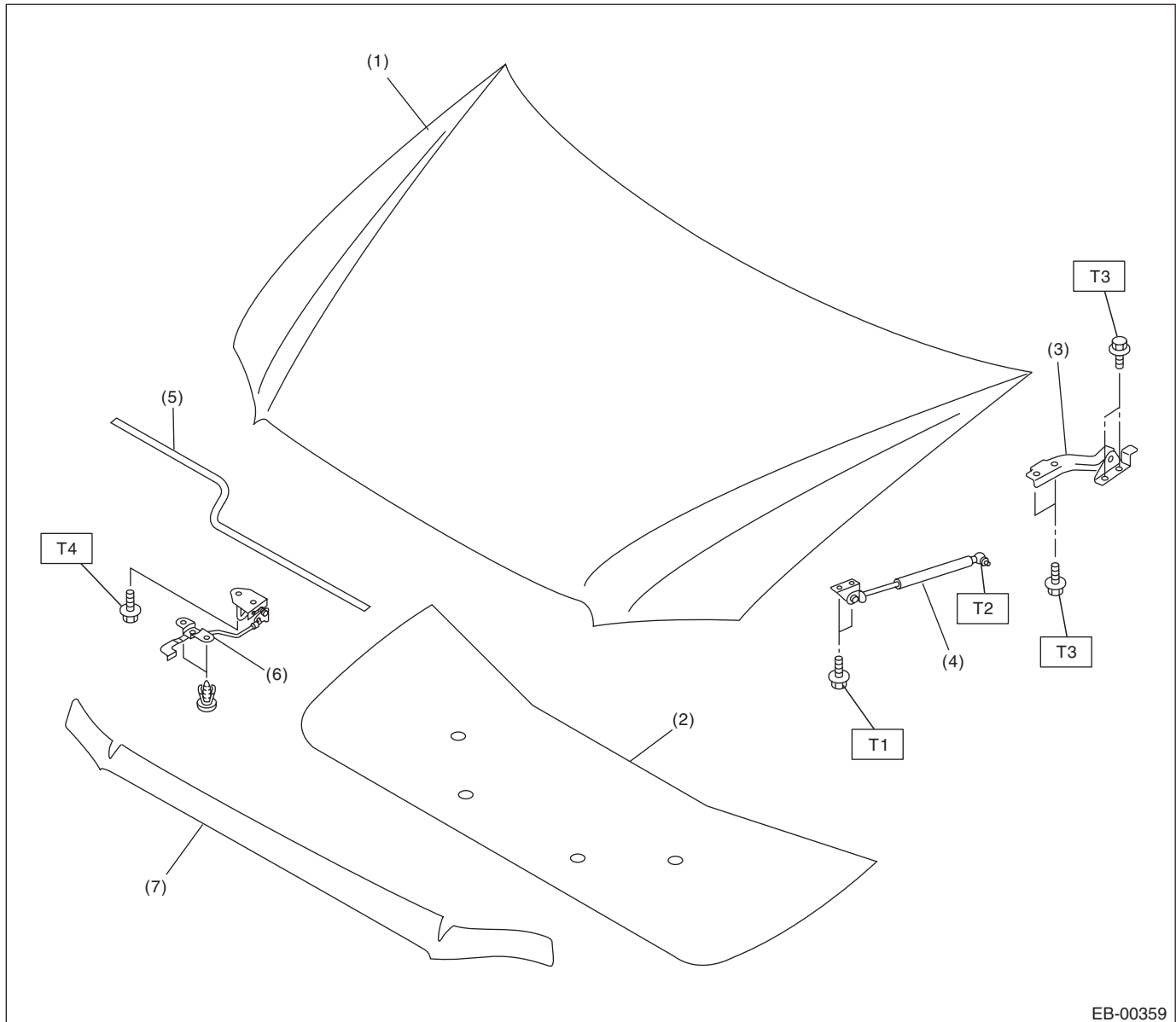
Section	Part	Specification
(A)	Roof panel to Roof spoiler	5.5±1.0 mm (0.22±0.04 in)
(B)	Rear gate glass to Rear quarter panel	5.5±1.5 mm (0.22±0.06 in)
(C)	Rear gate panel to Rear quarter panel	4.0±1.0 mm (0.16±0.04 in)
(D)	Rear gate panel to Rear bumper	7.0±1.5 mm (0.28±0.06 in)
(E)	Rear quarter panel to Rear bumper	0.3 + 1.0 mm (0.012 + 0.04 in)
(F)	Area around the Fuel filler flap lid to Quarter panel	3.5±0.5 mm (0.14±0.02 in)

General Description

EXTERIOR BODY PANELS

B: COMPONENT

1. FRONT HOOD



EB-00359

- | | |
|------------------------------|------------------------------------|
| (1) Front hood panel | (6) Front hood release handle ASSY |
| (2) Front hood insulator | (7) Front grille weatherstrip |
| (3) Front hood hinge | |
| (4) Front hood damper | |
| (5) Front hood weather strip | |

Tightening torque: N·m (kgf-m, ft-lb)

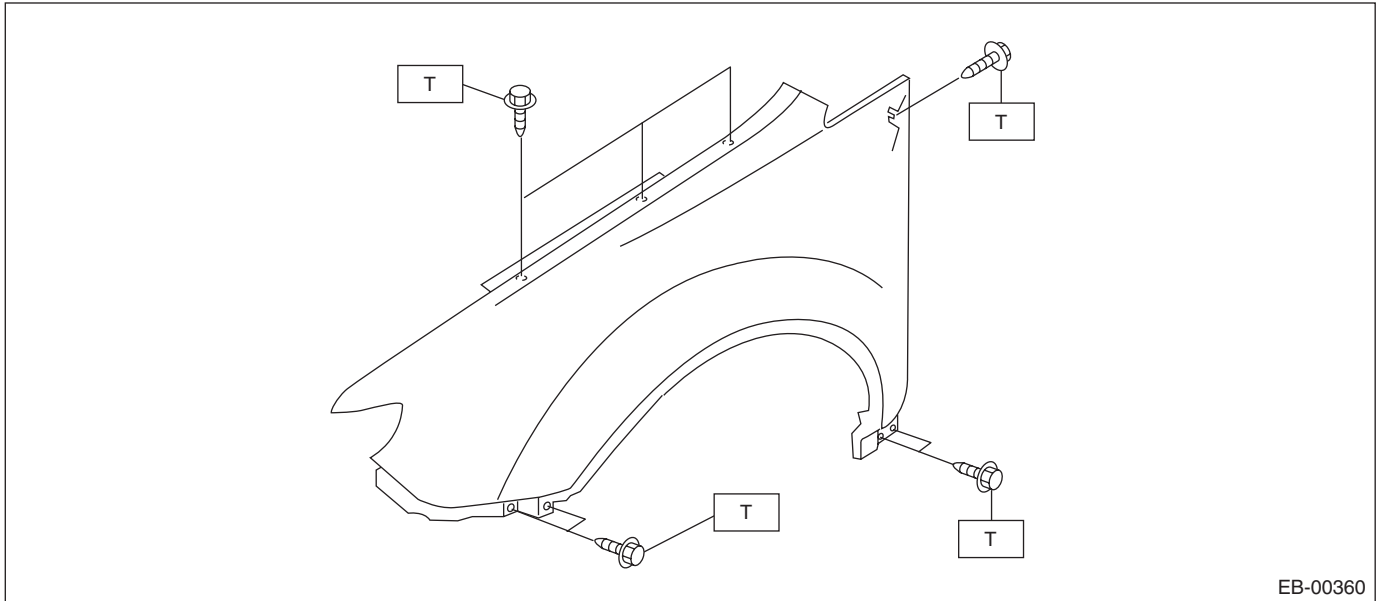
T1: 7.5 (0.76, 5.5)

T2: 20 (2.04, 14.5)

T3: 24.5 (2.5, 18.1)

T4: 33 (3.4, 24.5)

2. FRONT FENDER PANEL



EB-00360

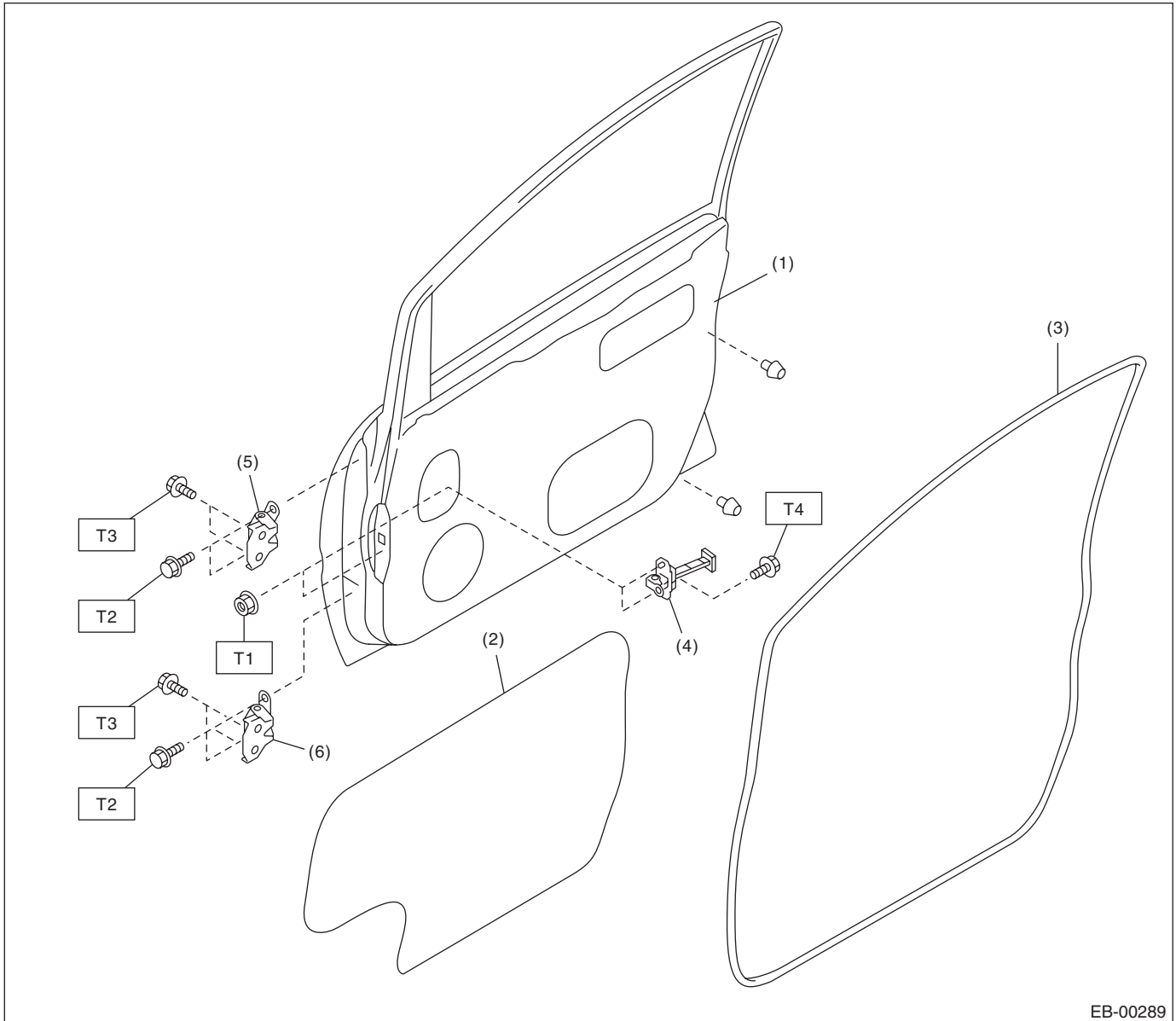
Tightening torque: N·m (kgf-m, ft-lb)

T: 7.4 (0.75, 5.5)

General Description

EXTERIOR BODY PANELS

3. FRONT DOOR PANEL



EB-00289

- (1) Front door panel
- (2) Sealing cover
- (3) Front door weather strip

- (4) Checker
- (5) Upper hinge
- (6) Lower hinge

Tightening torque: N·m (kgf-m, ft-lb)

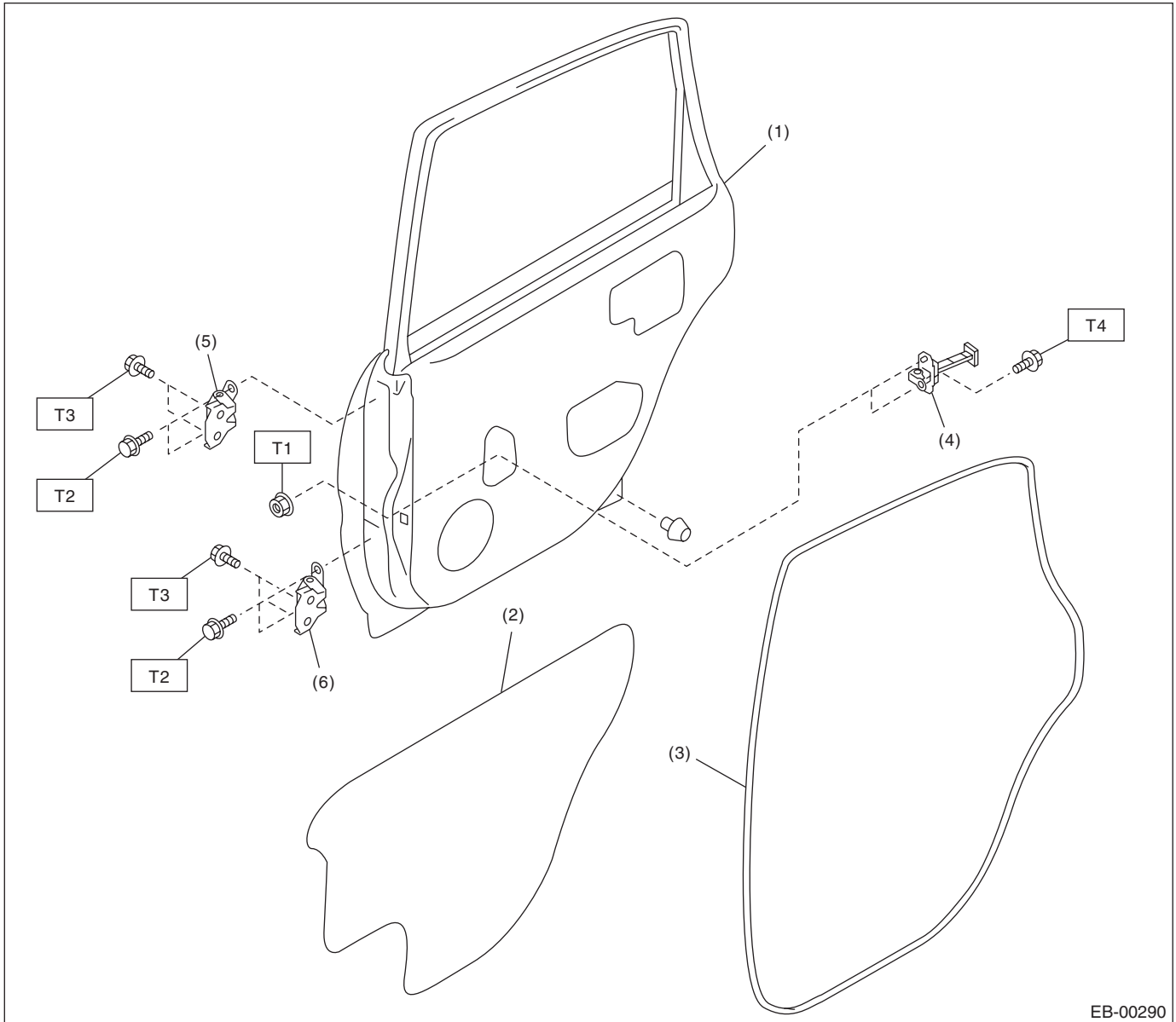
T1: 7.4 (0.75, 5.5)

T2: 24.5 (2.5, 18.1)

T3: 29.4 (3.0, 21.7)

T4: 32.3 (3.3, 23.8)

4. REAR DOOR PANEL



EB-00290

- (1) Rear door panel
- (2) Sealing cover
- (3) Rear door weather strip

- (4) Checker
- (5) Upper hinge
- (6) Lower hinge

Tightening torque: N·m (kgf-m, ft-lb)

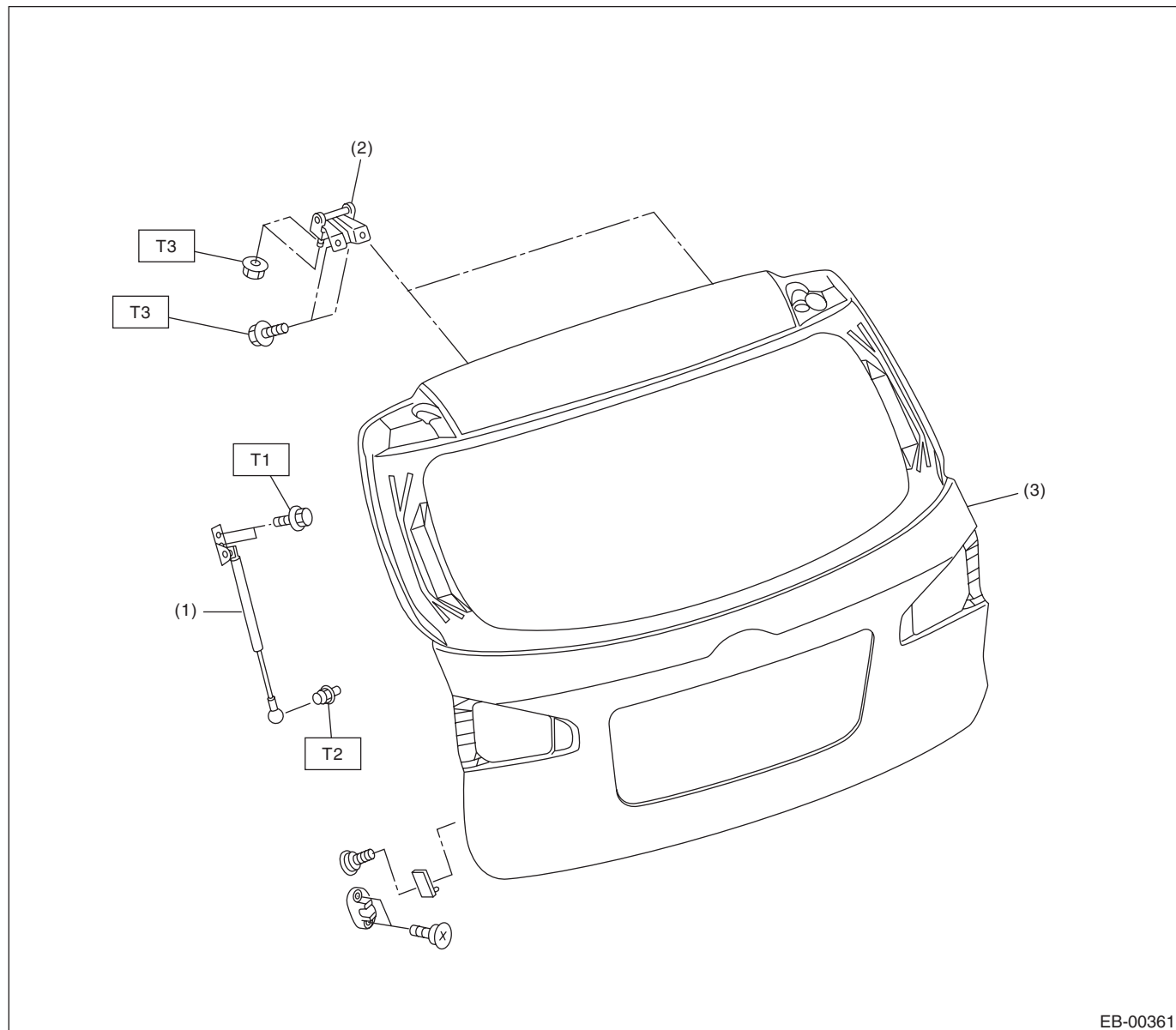
T1: 7.4 (0.75, 5.5)

T2: 24.5 (2.5, 18.1)

T3: 29.4 (3.0, 21.7)

T4: 32.3 (3.3, 23.8)

5. REAR GATE PANEL



EB-00361

- (1) Rear gate damper stay
- (2) Hinge
- (3) Rear gate panel

Tightening torque: N·m (kgf-m, ft-lb)

T1: 16 (1.63, 11.5)

T2: 20 (2.04, 14.5)

T3: 25 (2.6, 18.4)

C: CAUTION

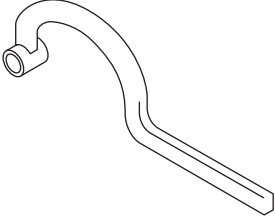
- Exterior body panels are heavy. Do not drop and damage the panels. During removal and installation, do not damage the panel painting surface.
- While removing mounting bolts, using assistance devices such as a support jack will help support the panel.
- Be careful not to lose small parts.

General Description

EXTERIOR BODY PANELS

D: PREPARATION TOOL

1. SPECIAL TOOL

ILLUSTRATION	TOOL NUMBER	DESCRIPTION	REMARKS
 ST-925610000	925610000	WRENCH	Used for removing and installing door hinge.

2. GENERAL TOOL

TOOL NAME	REMARKS
Support jack	Used for supporting door panel.
Clip remover	Used for removing various types of clips