

## General Description

### FUEL INJECTION (FUEL SYSTEMS)

---

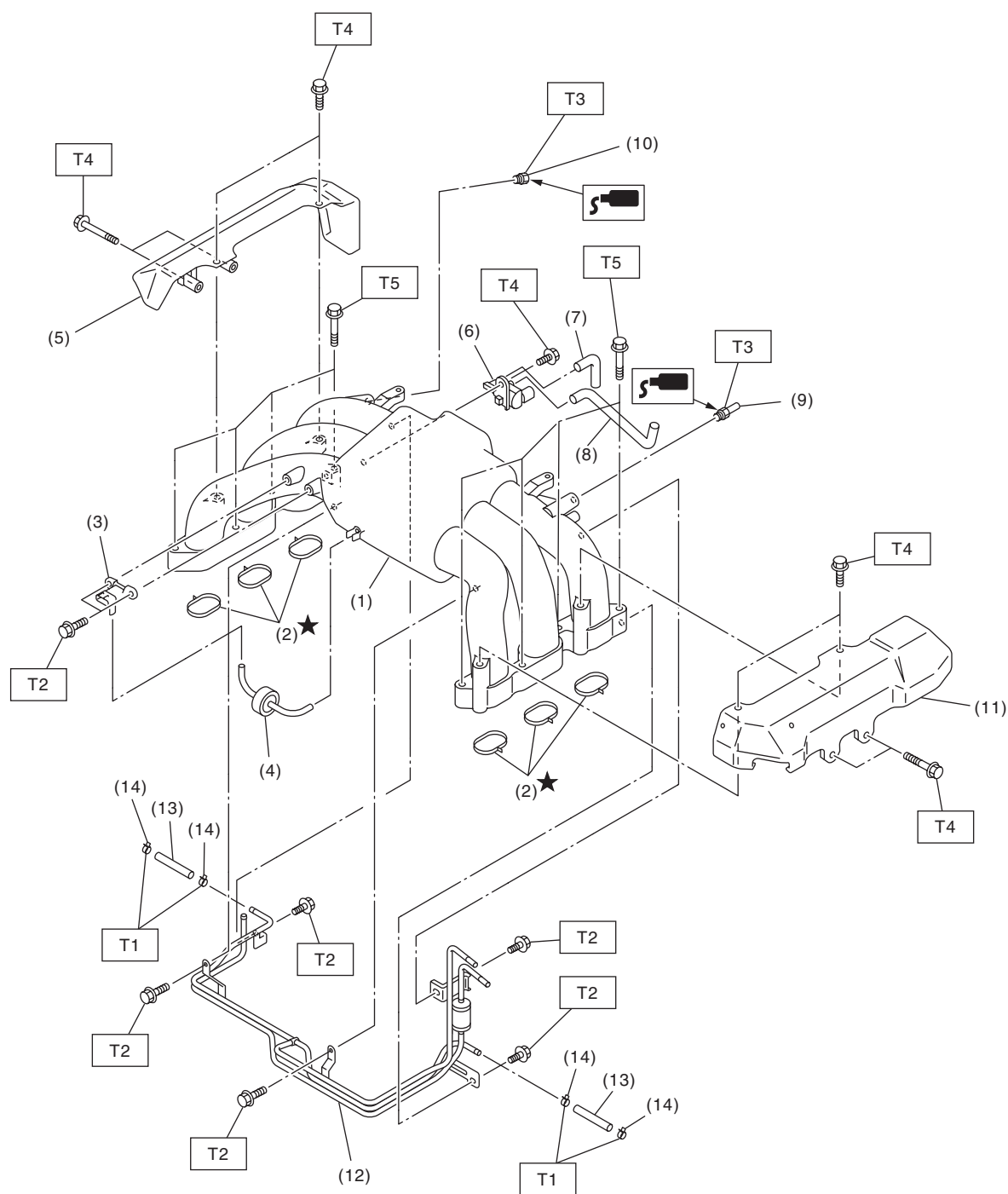
## 1. General Description

### A: SPECIFICATION

Fuel tank	Capacity	64 ℓ (16.9 US gal, 14.1 Imp gal)
	Location	Rear floor bottom
Fuel pump	Type	Impeller
	Shutoff discharge pressure	550 — 850 kPa (5.61 — 8.67 kg/cm <sup>2</sup> , 79.8 — 123.3 psi)
	Discharge rate	155 ℓ (41 US gal, 34.1 Imp gal)/h or more [12 V at 300 kPa (3.06 kg/cm <sup>2</sup> , 43.5 psi)]
Fuel filter		In-tank type

### B: COMPONENT

#### 1. INTAKE MANIFOLD



FU-02706

# General Description

## FUEL INJECTION (FUEL SYSTEMS)

- |                                       |                             |
|---------------------------------------|-----------------------------|
| (1) Intake manifold                   | (8) Hose                    |
| (2) O-ring                            | (9) Nipple                  |
| (3) Manifold absolute pressure sensor | (10) Plug                   |
| (4) Filter                            | (11) Fuel pipe protector LH |
| (5) Fuel pipe protector RH            | (12) Fuel pipe ASSY         |
| (6) Purge control solenoid valve      | (13) Hose                   |
| (7) Hose                              | (14) Clamp                  |

**Tightening torque: N·m (kgf-m, ft-lb)**

**T1: 1.5 (0.15, 1.1)**

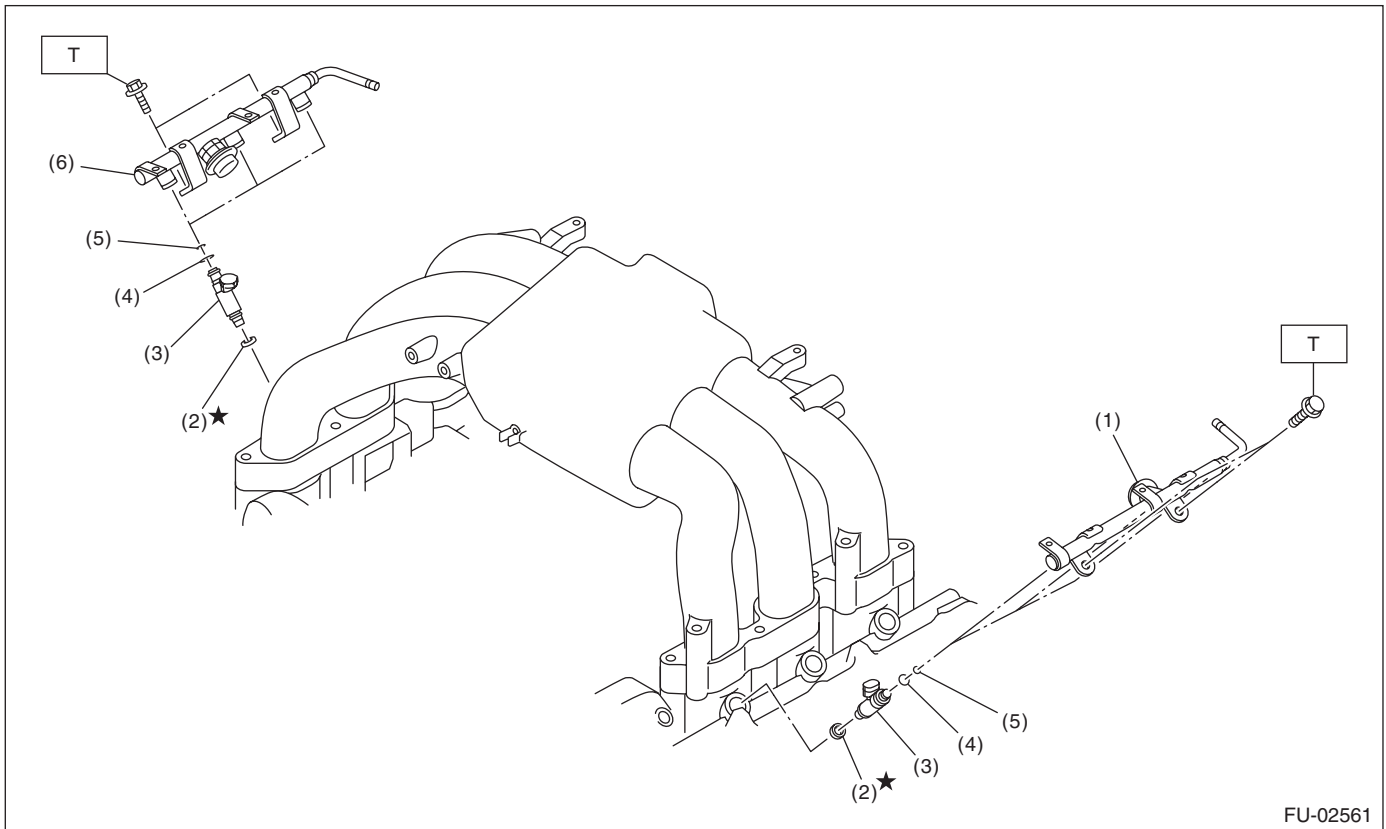
**T2: 6.4 (0.65, 4.7)**

**T3: 17 (1.7, 12.5)**

**T4: 19 (1.9, 14)**

**T5: 25 (2.5, 18)**

## 2. FUEL INJECTOR

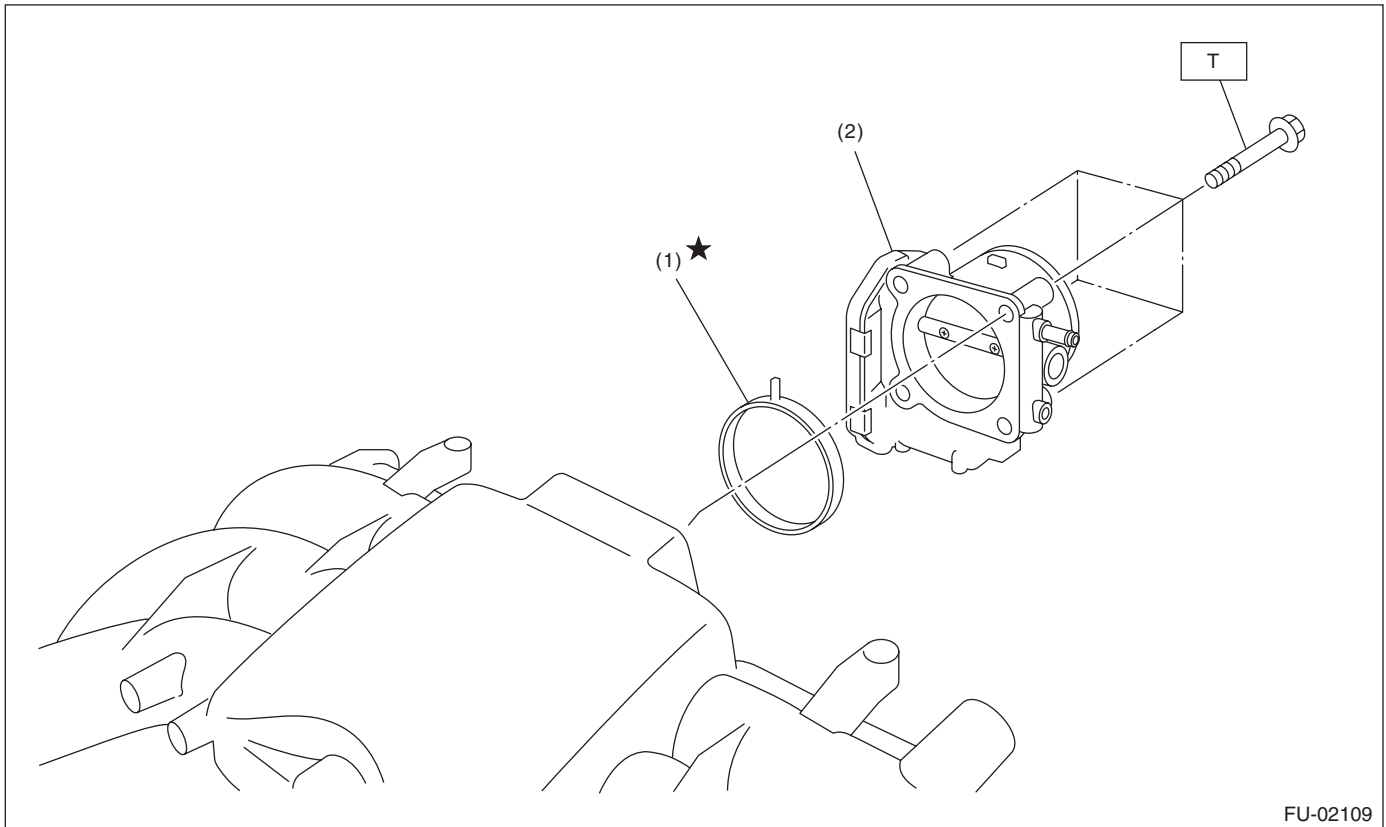


- |                           |                           |
|---------------------------|---------------------------|
| (1) Fuel injector pipe LH | (4) Injection rubber      |
| (2) Insulator             | (5) O-ring                |
| (3) Fuel injector         | (6) Fuel injector pipe RH |

**Tightening torque: N·m (kgf-m, ft-lb)**

**T: 19 (1.9, 14)**

## 3. AIR INTAKE SYSTEM



(1) O-ring

(2) Throttle body

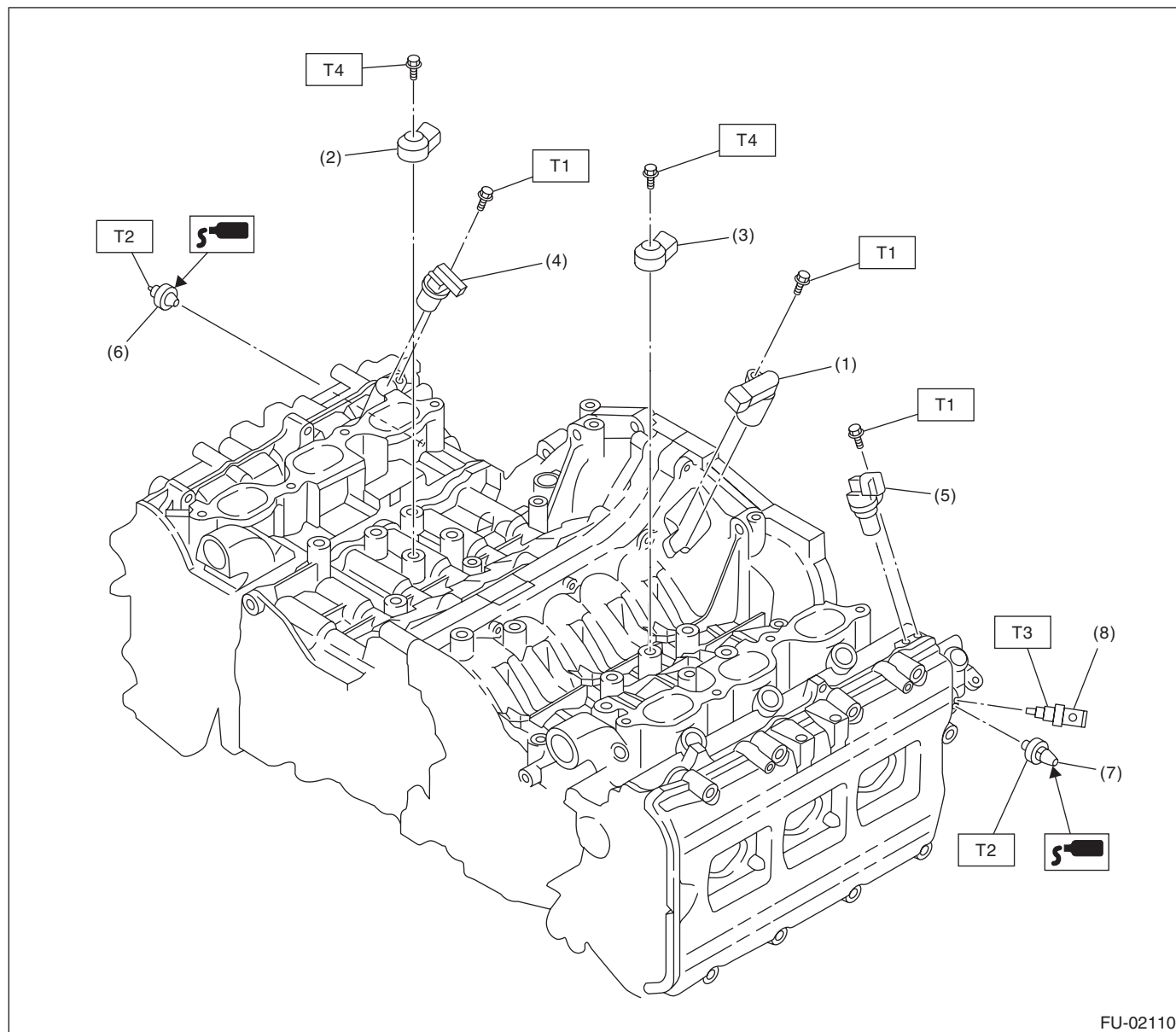
**Tightening torque: N·m (kgf-m, ft-lb)**

**T: 8 (0.8, 5.9)**

# General Description

## FUEL INJECTION (FUEL SYSTEMS)

### 4. CRANKSHAFT POSITION, CAMSHAFT POSITION AND KNOCK SENSORS



FU-02110

- |                                 |  |
|---------------------------------|--|
| (1) Crankshaft position sensor  | (6) Variable valve lift diagnosis oil pressure switch RH |
| (2) Knock sensor RH             | (7) Variable valve lift diagnosis oil pressure switch LH |
| (3) Knock sensor LH             | (8) Oil temperature sensor                               |
| (4) Camshaft position sensor RH |  |
| (5) Camshaft position sensor LH |  |

**Tightening torque: N·m (kgf-m, ft-lb)**

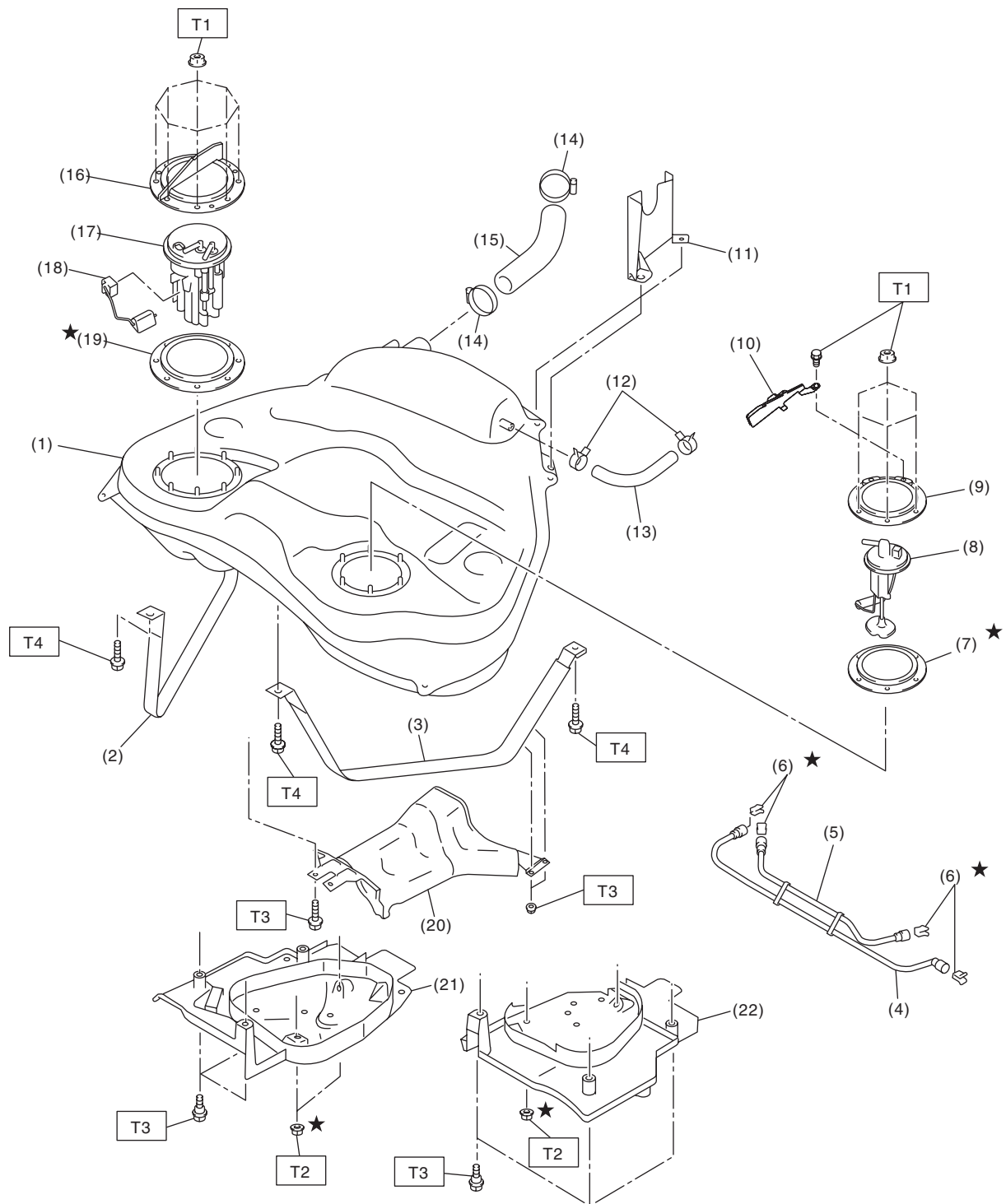
**T1: 6.4 (0.65, 4.7)**

**T2: 17 (1.7, 12.5)**

**T3: 18 (1.8, 13.3)**

**T4: 25 (2.5, 18)**

## 5. FUEL TANK



FU-02990

## General Description

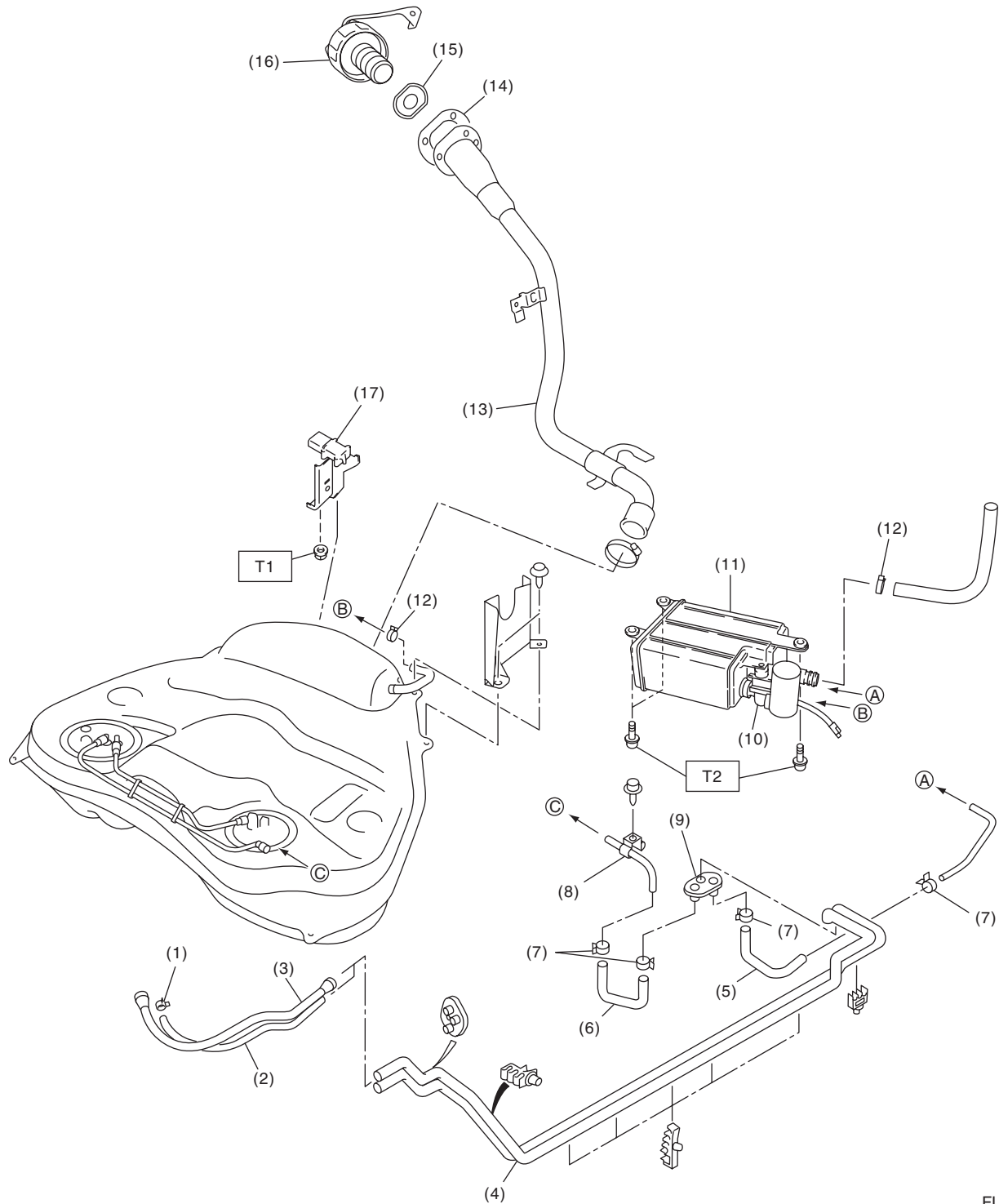
### FUEL INJECTION (FUEL SYSTEMS)

---

(1) Fuel tank	(11) Fuel tank protector LH (Rear)	(20) Heat shield cover
(2) Fuel tank band RH	(12) Clip	(21) Fuel tank protector RH (Front)
(3) Fuel tank band LH	(13) Evaporation hose	(22) Fuel tank protector LH (Front)
(4) Delivery tube	(14) Clamp	
(5) Jet pump tube	(15) Fuel filler hose	<hr/>
(6) Retainer	(16) Fuel pump upper plate	<b><i>Tightening torque: N·m (kgf-m, ft-lb)</i></b>
(7) Fuel sub level sensor gasket	(17) Fuel pump ASSY	<b><i>T1: 4.4 (0.45, 3.2)</i></b>
(8) Fuel sub level sensor	(18) Fuel level sensor	<b><i>T2: 9 (0.9, 6.6)</i></b>
(9) Fuel sub level sensor upper plate	(19) Fuel pump gasket	<b><i>T3: 18 (1.84, 13.3)</i></b>
(10) Bracket		<b><i>T4: 33 (3.4, 25)</i></b>

---

### 6. FUEL LINE



FU-02982



## General Description

### FUEL INJECTION (FUEL SYSTEMS)

---

(1) Clamp	(8) Fuel pipe ASSY	(15) Ring
(2) Evaporation hose A	(9) Grommet	(16) Fuel filler cap
(3) Fuel delivery hose A	(10) Drain valve	(17) Fuel tank pressure sensor
(4) Fuel pipe ASSY	(11) Canister	
(5) Evaporation hose B	(12) Clamp	
(6) Fuel delivery hose B	(13) Fuel filler pipe	
(7) Clamp	(14) Packing	

---

**Tightening torque: N·m (kgf-m, ft-lb)**

**T1: 7.35 (0.75, 5.4)**

**T2: 8.0 (0.82, 5.9)**

---

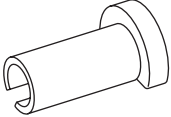
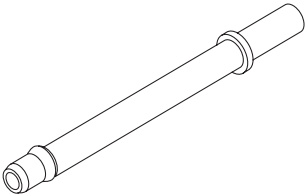
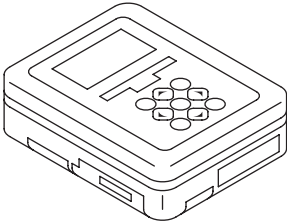
### C: CAUTION

- Wear appropriate work clothing, including a cap, protective goggles and protective shoes when performing any work.
- Remove contamination including dirt and corrosion before removal, installation or disassembly.
- Keep the disassembled parts in order and protect them from dust and dirt.
- Before removal, installation or disassembly, be sure to clarify the failure. Avoid unnecessary removal, installation, disassembly and replacement.
- Vehicle components are extremely hot after driving. Be wary of receiving burns from heated parts.
- Be sure to tighten fasteners including bolts and nuts to the specified torque.
- Place shop jacks or rigid racks at the specified points.
- Before disconnecting connectors of sensors or units, be sure to disconnect the ground cable from the battery.
- Place "NO FIRE" signs near the working area.
- Prepare a container and cloth to prevent scattering of fuels when performing work where fuels can be spilled. If the fuel spills, wipe it off immediately to prevent from penetrating into floor or flowing out for environmental protection.
- Follow all government and local regulations concerning disposal of refuse when disposing fuel.

## General Description

FUEL INJECTION (FUEL SYSTEMS)

### D: PREPARATION TOOL

ILLUSTRATION	TOOL NUMBER	DESCRIPTION	REMARKS
 ST42099AE000	42099AE000	CONNECTOR REMOVER	Used for disconnecting quick connector of the engine compartment.
 ST18471AA000	18471AA000	FUEL PIPE ADAPTER	Used for draining fuel.
 ST1B021XU0	1B021XU0	SUBARU SELECT MONITOR III KIT	Used for draining fuel.