

# General Description

## PARKING BRAKE

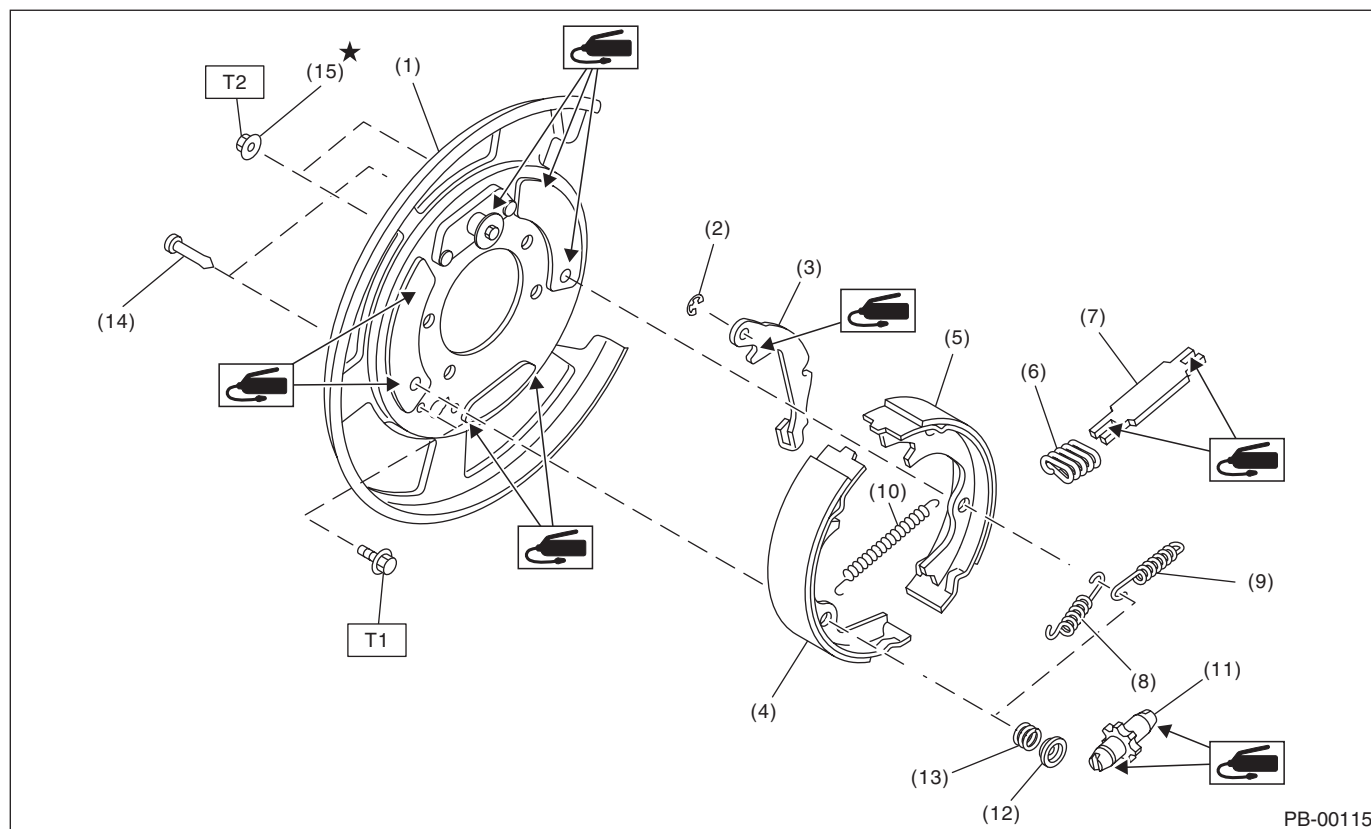
### 1. General Description

#### A: SPECIFICATION

Type		Mechanical, drum in disc rear brakes
Effective drum diameter	mm (in)	210 (8.27)
Lining dimensions (Length × Width × Thickness)	mm (in)	238.2 × 30.0 × 4.0 (9.378 × 1.181 × 0.157)
Clearance adjustment		Manual adjustment
Pedal stroke	notches/N (kgf, lb)	5 — 6/300 (30.6, 67)

#### B: COMPONENT

##### 1. PARKING BRAKE (REAR DISC BRAKE)



- |                                    |                             |                                  |
|------------------------------------|-----------------------------|----------------------------------|
| (1) Back plate                     | (8) Primary return spring   | (14) Shoe hold pin               |
| (2) Retainer                       | (9) Secondary return spring | (15) Self locking nut (with WAX) |
| (3) Lever                          | (10) Adjusting spring       |                                  |
| (4) Parking brake shoe (Primary)   | (11) Adjuster               |                                  |
| (5) Parking brake shoe (Secondary) | (12) Brake shoe cup         |                                  |
| (6) Strut spring                   | (13) Brake shoe spring      |                                  |
| (7) Strut                          |                             |                                  |

**Tightening torque: N·m (kgf·m, ft·lb)**

**T1: 8 (0.8, 5.9)**

**T2: 75 (7.6, 55.33)**

This diagram illustrates the rear suspension assembly, showing the relationship between various components. The parts are labeled as follows:

- T1**: Shock absorber mounting bracket
- T2**: Shock absorber
- T3**: Various mounting brackets and hardware
- T4**: Shock absorber mounting bracket
- (1)**: Rear suspension arm
- (2)**: Shock absorber mounting bracket
- (3)**: Shock absorber mounting bracket
- (4)**: Shock absorber mounting bracket
- (5)**: Shock absorber mounting bracket
- (6)**: Shock absorber mounting bracket
- (7)**: Shock absorber mounting bracket
- (8)**: Shock absorber mounting bracket
- (9)**: Shock absorber mounting bracket

The diagram shows the assembly of the rear suspension, including the shock absorber, suspension arm, and various mounting brackets and hardware. The components are shown in their relative positions, with dashed lines indicating the assembly path.

- Tightening torque: N-m (kgf-m, ft-lb)**
- |            |                        |
|------------|------------------------|
| <b>T1:</b> | <b>7.5 (0.76, 5.5)</b> |
| <b>T2:</b> | <b>8 (0.8, 5.9)</b>    |
| <b>T3:</b> | <b>18 (1.8, 13.0)</b>  |
| <b>T4:</b> | <b>33 (3.4, 24.3)</b>  |

#### **C: CAUTION**

- Wear appropriate work clothing, including a cap, protective goggles and protective shoes when performing any work.
- Before removal, installation or disassembly, be sure to clarify the failure. Avoid unnecessary removal, installation, disassembly and replacement.
- Vehicle components are extremely hot after driving. Be wary of receiving burns from heated parts.
- Use SUBARU genuine grease etc. or equivalent. Do not mix grease etc. of different grades or manufacturers.
- Be sure to tighten fasteners including bolts and nuts to the specified torque.
- Place shop jacks or rigid racks at the specified points.
- Before securing a part in a vise, place cushioning material such as wood blocks, aluminum plate or cloth between the part and the vise.
- Make sure grease does not come into contact with the parking shoes.