

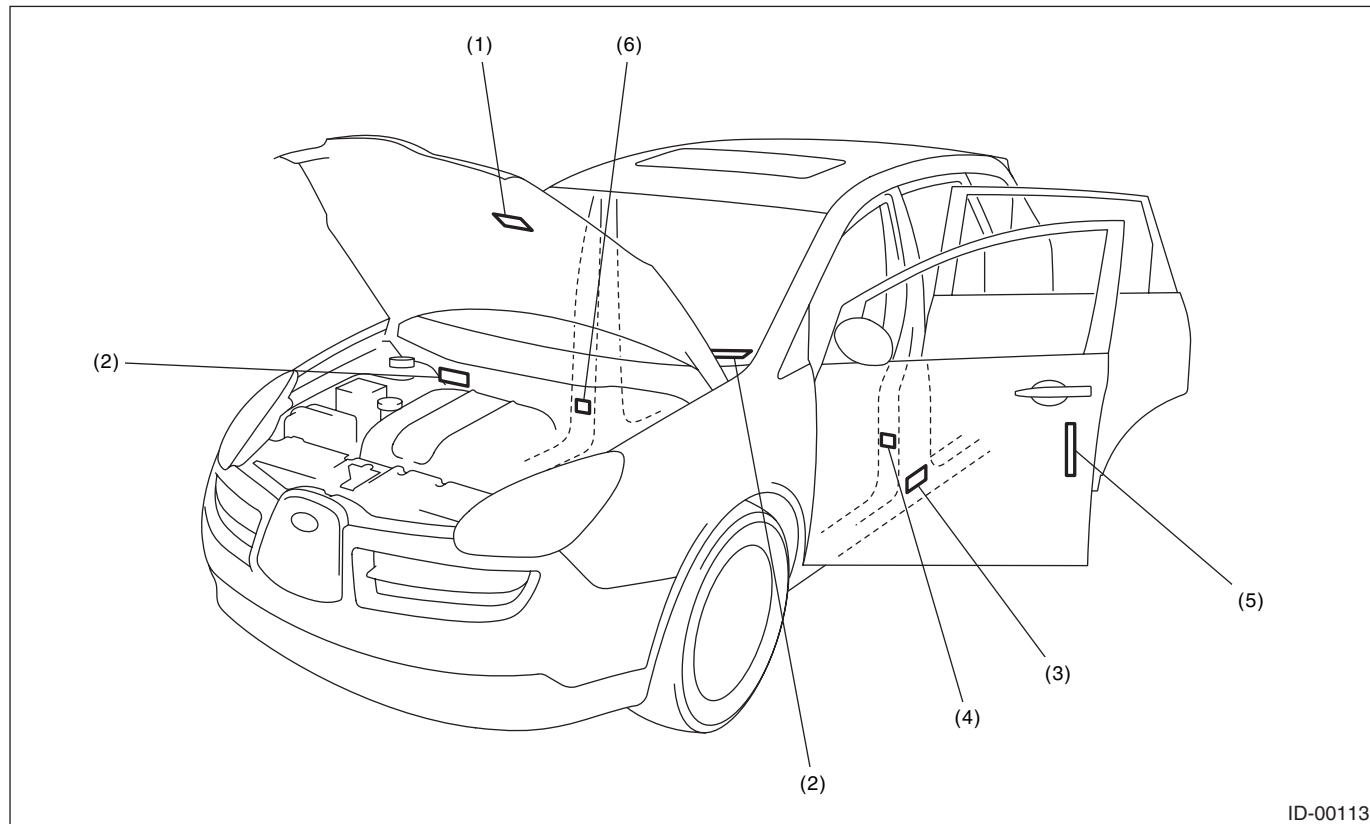
1. Identification

A: IDENTIFICATION

1. IDENTIFICATION NUMBER AND LABEL LOCATIONS

The V.I.N. (Vehicle Identification Numbers) is used to classify the vehicle.

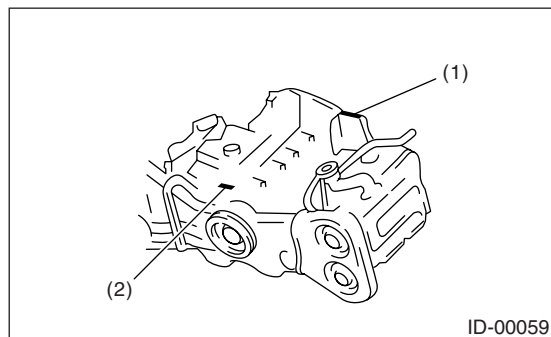
• POSITIONING OF THE PLATE LABEL FOR IDENTIFICATION



ID-00113

- | | | |
|---|---|-----------------------|
| (1) Emission Control Label | (5) Emission control label FMVSS label (U.S. model)
CMVSS label (Canada model) | (6) Radio noise label |
| (2) Vehicle identification number (VIN) | | |
| (3) Model number plate | | |
| (4) Tire inflation pressure label (Driver side) | | |

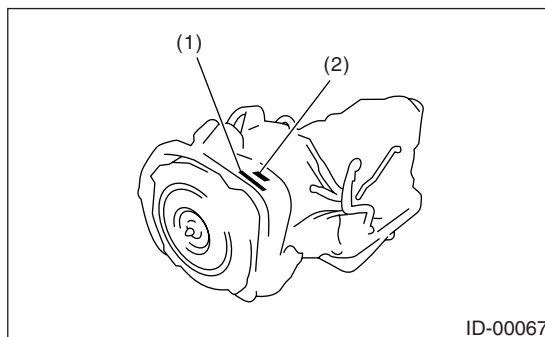
• ENGINE



ID-00059

- | |
|--|
| (1) Engine serial number (Punch mark) |
| (2) Engine type (Crankcase upper side) |

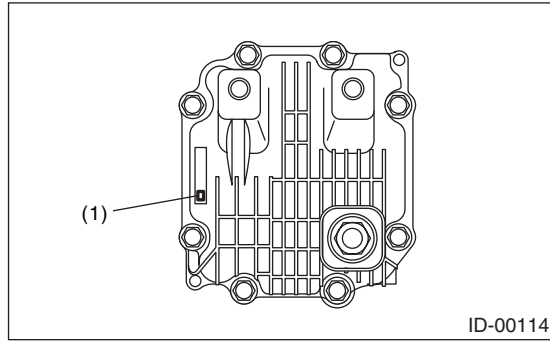
• AUTOMATIC TRANSMISSION



ID-00067

- | |
|--------------------------------------|
| (1) AT type label |
| (2) Transmission serial number label |

• REAR DIFFERENTIAL



(1) Type (label)

• MODEL NUMBER PLATE

FUJI HEAVY INDUSTRIES LTD.			
		型式	
車台番号 VIN	4S4WX82CX64400001		
⊙ アプライドモデル Applied model	WXEAY2U	オプションコード Option CODE	⊙ U4AA
トリムコード TRIM CODE	D20	エンジン型式 Engine type	EZ30DBL1GB
外装色コード COLOR CODE	32D	ミッション型式 Transmission type	TG5C9CMAAA

ID-00115

Identification

IDENTIFICATION

2. MEANING OF V.I.N.

The meaning of the V.I.N. is as follows:

J4S4WX82CX64400001[

The starting and ending brackets ([]) are stop marks.

Digits	Code	Meaning	Details
1 — 3	4S4	Manufacturer body area	4S4: MPV
4	W	Car line	B9 TRIBECA
5	X	Body type	X: Crossover vehicle
6	8	Displacement	8: 3.0 L AWD
7	2	Grade	2: 5ST-M 3: 5ST-E 5: BASE-M 6: BASE-E
8	C	Restraint or GVWR Class	C: Class C (GVWR 4001 to 5000 lb)
9	X	Check digit	0 — 9 & X
10	6	Model year	6: 2006MY 7: 2007MY 8: 2008MY
11	4	Transmission type	4: Full-time AWD 5AT
12 — 17	400001	Serial number	400001 —

3. MODEL NUMBER PLATE

The model number plate indicates the type, V.I.N. <Ref. to ID-4, MEANING OF V.I.N., IDENTIFICATION, Identification.>, applied model, option code, trim code, engine type, transmission type and the exterior color code. This information is helpful when placing orders for parts.

WXEAY2U

Digits	Code	Meaning	Details
1	W	Series	B9 TRIBECA
2	X	Body type	X: Crossover vehicle
3	E	Engine displacement Drive system Suspension system	E: 3.0 L AWD
4	A	Model year	A: 2006MY
5	Y	Destination	Y: U.S, Canada
6	2	Grade	2: 5ST-M 3: 5ST-E 5: BASE-M 6: BASE-E
7	U	Transmission, fuel feed system	U: DOHC MPI 5AT TIP

The engine and transmission type are as follows.

ENGINE

EZ30DBL1GB

Digits	Code	Meaning	Details
1 and 2	EZ	Engine type	EZ: 6 cylinders
3 and 4	30	Displacement	30: 3.0 L
5	D	Fuel feed system	D: MPI-NA (DOHC, H6)
6	B	Emission control	B: For USA
7	L	Mounted transmission	L: 5AT
8 — 10	1GB	Detailed specifications	Used when ordering parts. For details, refer to the parts catalog.

TRANSMISSION

TG5C9CMAAA

Digits	Code	Meaning	Details
1	T	Transmission	T: Transmission
2	G	Transmission type	B: Full-time AWD AT center differential
3 and 4	5C	Classification	5C: 5AT
5	9	Series	B9 TRIBECA
6	C	Transmission specifications	C: Full-time AWD VTD 5AT
7	M	Mounted vehicle	M: 3.0 L DOHC
8 — 10	AAA	Detailed specifications	Used when ordering parts. For details, refer to the parts catalog.

REAR DIFFERENTIAL

XX

Code	Reduction gear ratio	LSD
XX	3.583	None

Option

U4AA

Digits	Code	Meaning	Details
1 — 2	U4	Destination	U4: U.S. For USA U0: Canada
3	A	Option equipment	A: Leather seats X: None
4	A	Option equipment	A: High grade audio & speakers B: High grade audio & speakers, DVD C: High grade audio & speakers, DVD, navigation system D: DVD E: Navigation System X: None

Identification

IDENTIFICATION
