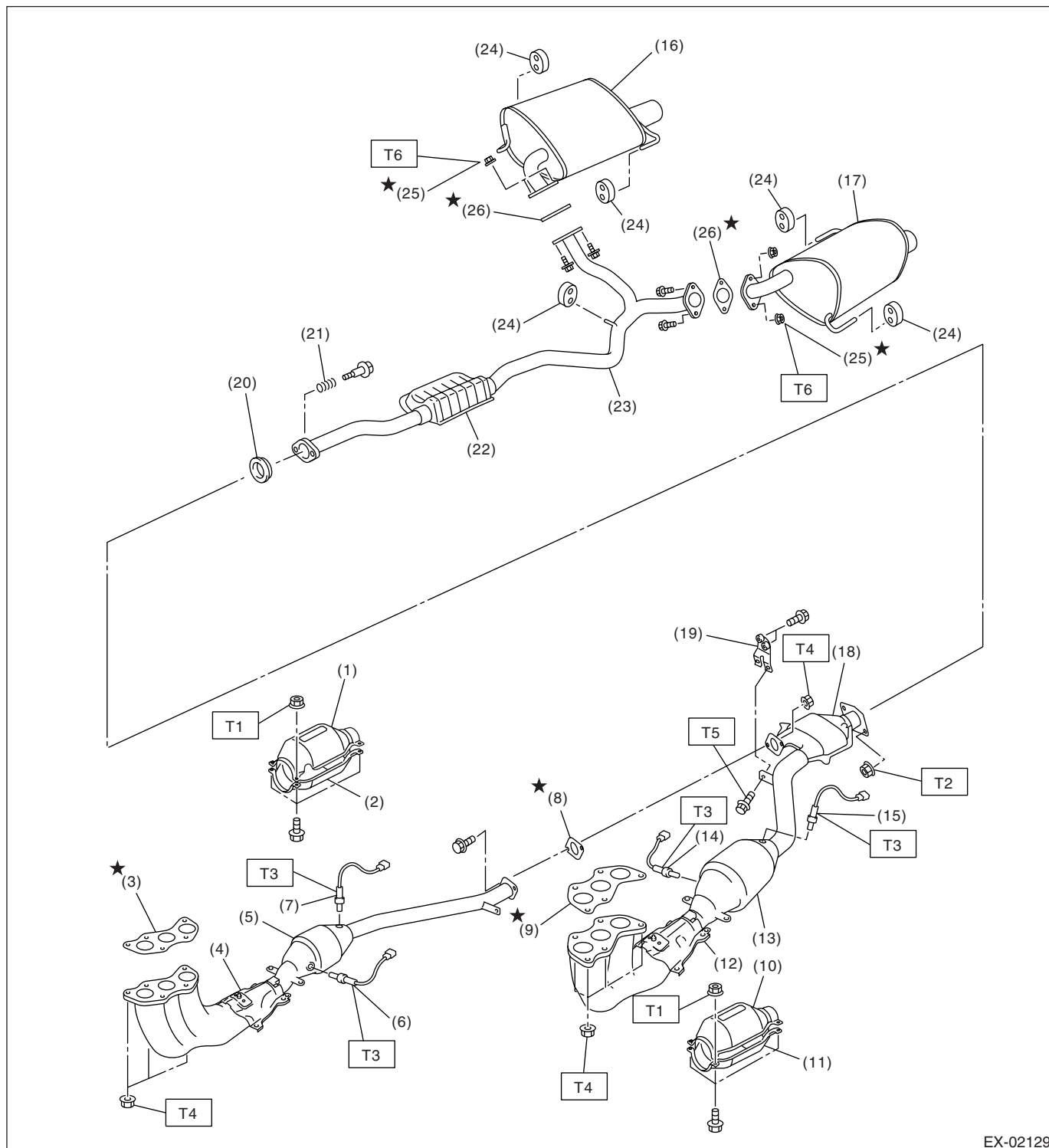


General Description

EXHAUST

1. General Description

A: COMPONENT



EX-02129

General Description

EXHAUST

(1) Front catalytic converter upper cover (RH)	(11) Front catalytic converter lower cover (LH)	(23) Rear exhaust pipe
(2) Front catalytic converter lower cover (RH)	(12) Front exhaust pipe (LH)	(24) Cushion rubber
(3) Gasket	(13) Front catalytic converter (LH)	(25) Self-locking nut
(4) Front exhaust pipe (RH)	(14) Front oxygen (A/F) sensor (LH)	(26) Gasket
(5) Front catalytic converter (RH)	(15) Rear oxygen sensor (LH)	
(6) Front oxygen (A/F) sensor (RH)	(16) Muffler (RH)	
(7) Rear oxygen sensor (RH)	(17) Muffler (LH)	
(8) Gasket	(18) Rear catalytic converter	
(9) Gasket	(19) Bracket	
(10) Front catalytic converter upper cover (LH)	(20) Gasket	
	(21) Spring	
	(22) Chamber	

Tightening torque: N·m (kgf-m, ft-lb)

T1: 13 (1.3, 9.4)

T2: 18 (1.8, 13.0)

T3: 21 (2.1, 15.2)

T4: 30 (3.1, 22.4)

T5: 35 (3.6, 26.0)

T6: 48 (4.9, 35.4)

B: CAUTION

- Wear work clothing, including a cap, protective goggles and protective shoes during operation.
- Remove contamination including dirt and corrosion before removal, installation or disassembly.
- Keep the disassembled parts in order and protect them from dust and dirt.
- Before removal, installation or disassembly, be sure to clarify the failure. Avoid unnecessary removal, installation, disassembly and replacement.
- Be careful not to burn yourself, because each part on the vehicle is hot after running.
- Be sure to tighten fasteners including bolts and nuts to the specified torque.
- Place shop jacks or rigid racks at the specified points.
- Before disconnecting connectors of sensors or units, be sure to disconnect the ground cable from battery.