

# General Description

VEHICLE DYNAMICS CONTROL (VDC)

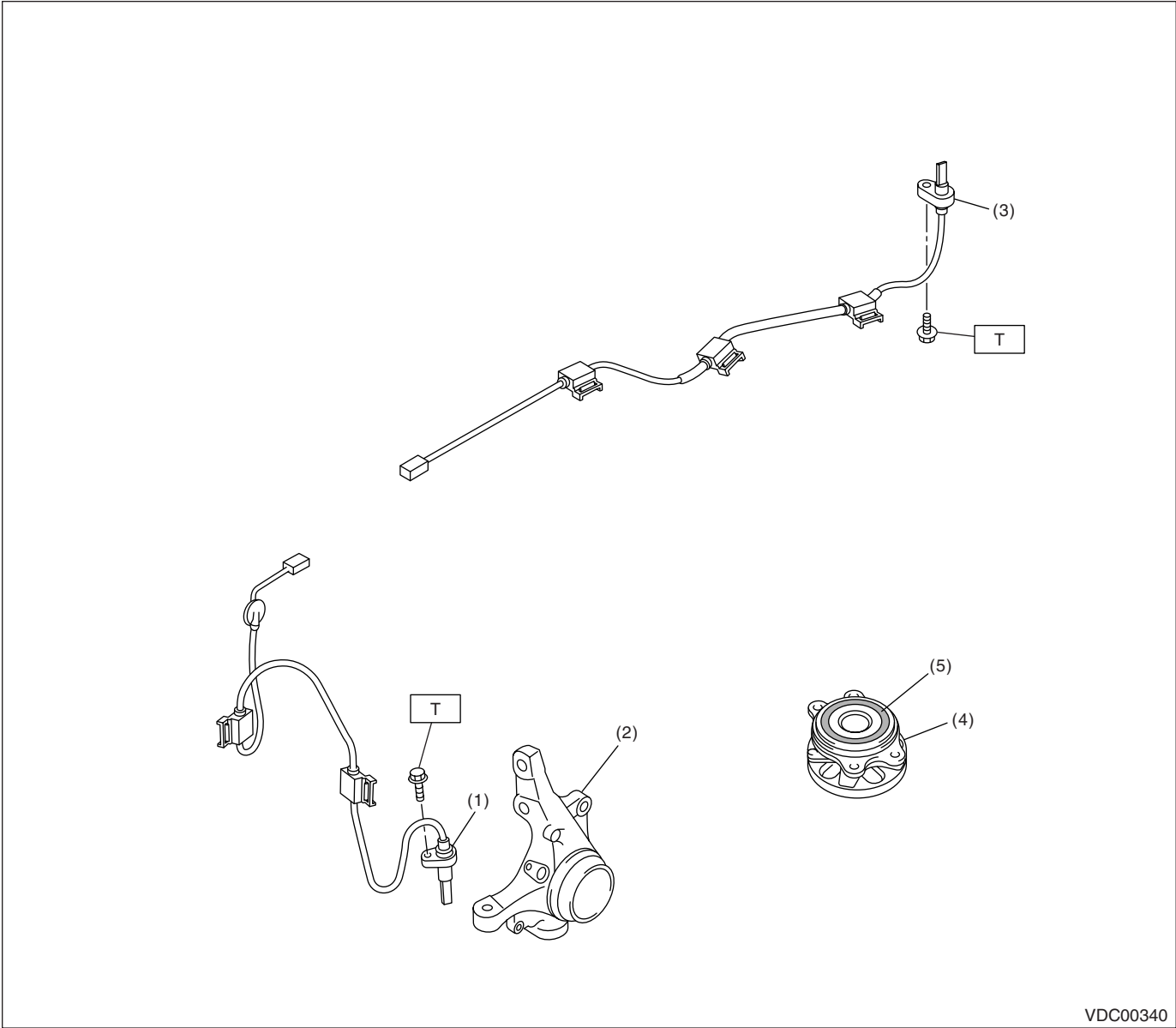
## 1. General Description

### A: SPECIFICATION

Item			Specification or identification
ABS wheel speed sensor	ABS wheel speed sensor gap (for reference)	Front	0.55 — 1.45 mm (0.022 — 0.057 in)
		Rear	0.50 — 1.50 mm (0.020 — 0.059 in)
	Identifications of harness (marks, color)	Front	W1 (White)
		Rear	W3 (White)
VDCCM&H/U Identification			W1

### B: COMPONENT

#### 1. ABS WHEEL SPEED SENSOR



- (1) Front ABS wheel speed sensor

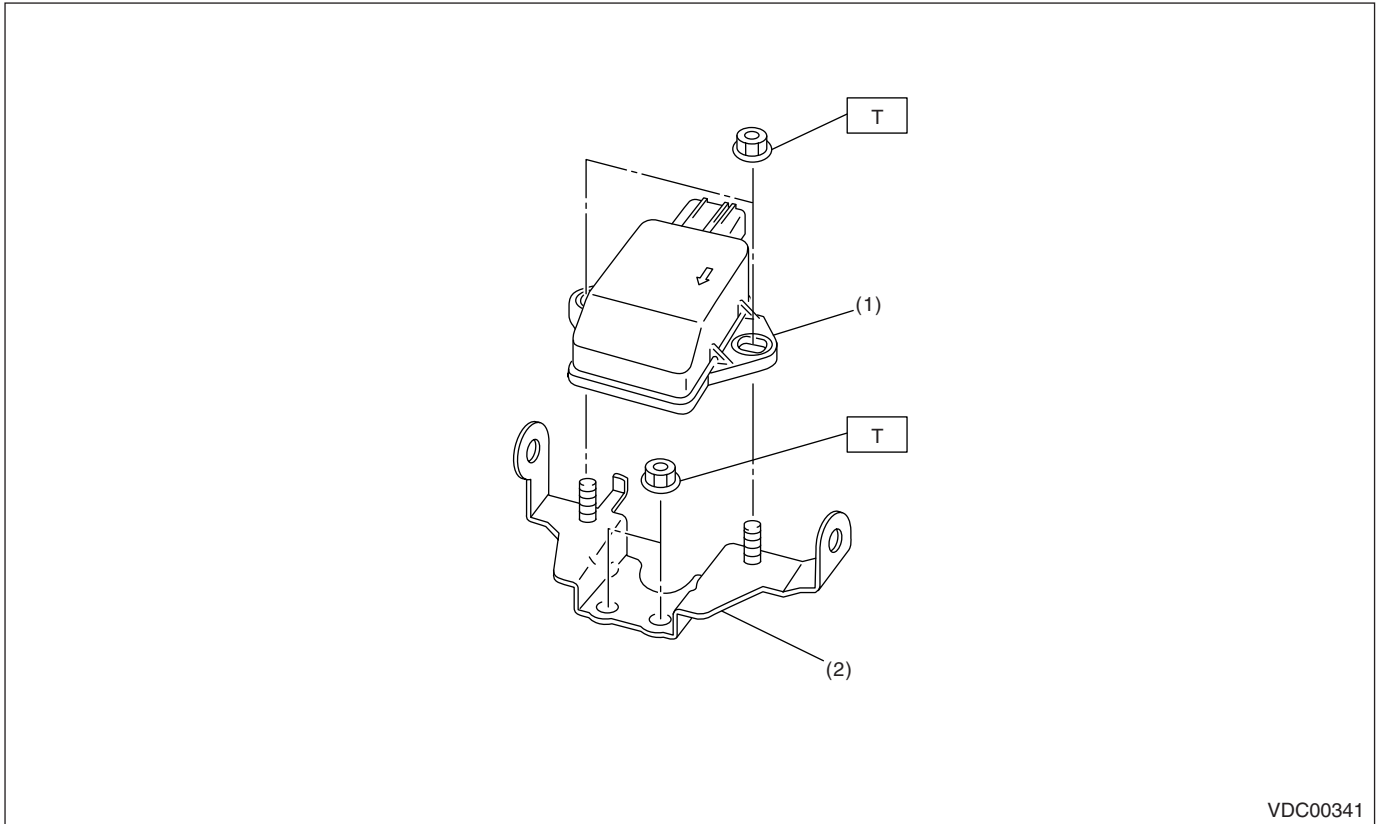
(2) Front housing

(3) Rear ABS wheel speed sensor
- (4) Hub unit bearing

(5) Magnetic encoder

**Tightening torque: N·m (kgf·m, ft·lb)**  
**T: 7.5 (0.76, 5.5)**

## 2. YAW RATE & LATERAL G SENSOR

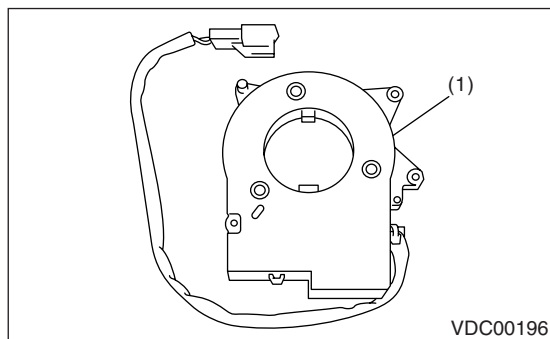


VDC00341

- (1) Yaw rate & lateral G sensor
- (2) Bracket

**Tightening torque: N·m (kgf-m, ft-lb)**  
**T: 7.5 (0.76, 5.5)**

## 3. STEERING ANGLE SENSOR



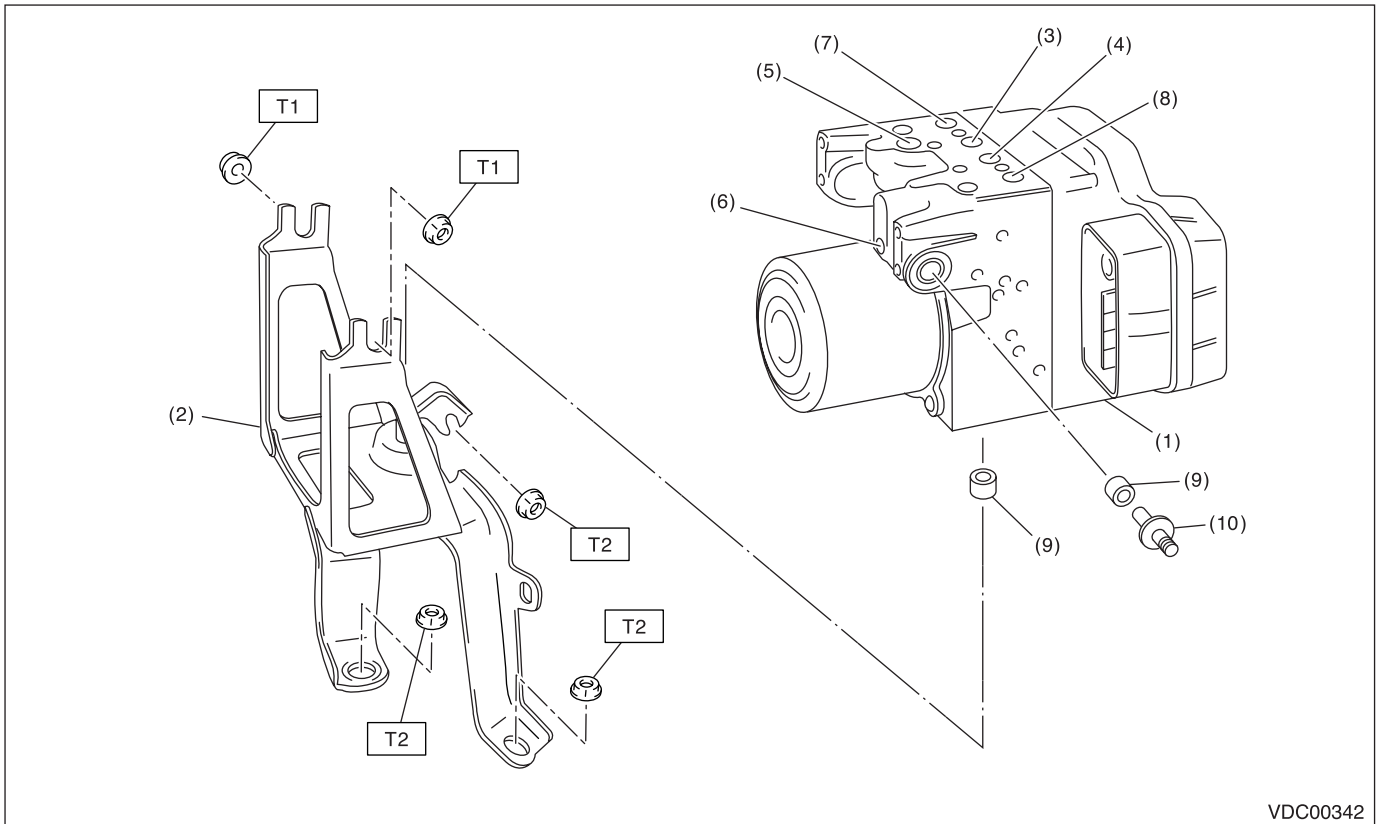
VDC00196

- (1) Steering angle sensor

# General Description

## VEHICLE DYNAMICS CONTROL (VDC)

### 4. VDC CONTROL MODULE AND HYDRAULIC CONTROL UNIT (VDCCM&H/U)



VDC00342

- (1) VDC control module and hydraulic control unit (VDCCM&H/U)
- (2) Bracket
- (3) Rear RH outlet
- (4) Rear LH outlet

- (5) Secondary inlet
- (6) Primary inlet
- (7) Front LH outlet
- (8) Front RH outlet
- (9) Damper

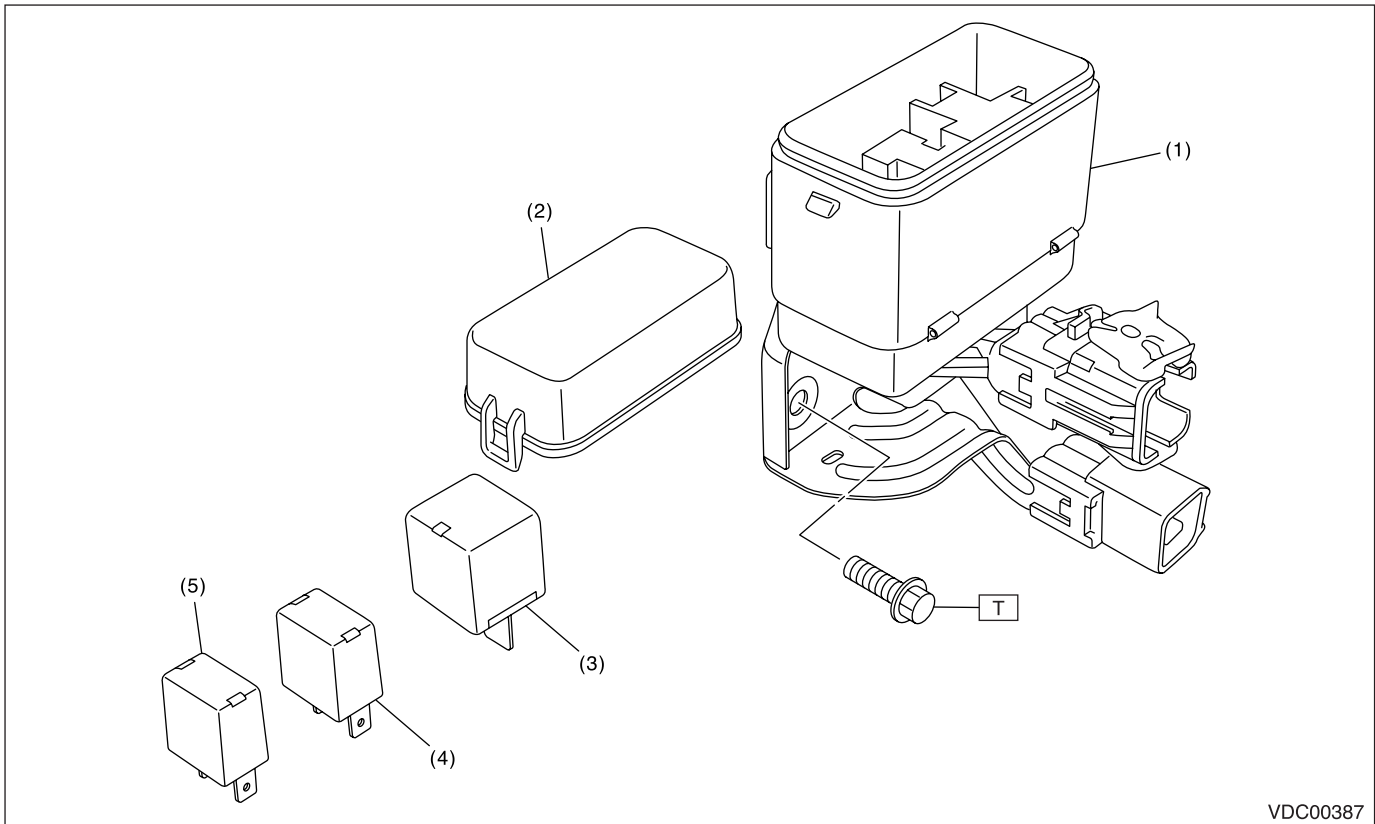
- (10) Stud bolt

***Tightening torque: N·m (kgf·m, ft·lb)***

***T1: 7.5 (0.76, 5.5)***

***T2: 33 (3.4, 24)***

### 5. RELAY BOX



VDC00387

- |                        |                               |
|------------------------|-------------------------------|
| (1) Relay box          | (4) Fuel safe relay (green)   |
| (2) Cover              | (5) Vacuum pump relay (black) |
| (3) Motor relay (blue) |                               |

**Tightening torque: N·m (kgf-m, ft-lb)**  
**T: 18 (1.8, 13.0)**

### C: CAUTION

Please clearly understand and adhere to the following general precautions. They must be strictly followed to avoid any injury to the person doing the work or people in the area.

#### 1. OPERATION

- Wear work clothing, including a cap, protective goggles and protective shoes during operation.
- Remove contamination including dirt and corrosion before removal, installation or disassembly.
- Keep the disassembled parts in order and protect them from dust and dirt.
- Before disconnecting connectors of sensors or units, be sure to disconnect the ground cable from the battery.
- Before removal, installation or disassembly, be sure to clarify the failure. Avoid unnecessary removal, installation, disassembly and replacement.
- Be careful not to burn yourself, because each part on the vehicle is hot after running.
- Be sure to tighten fasteners including bolts and nuts to the specified torque.
- Place shop jacks or rigid racks at the specified points.

#### 2. OIL

When handling oil, follow the rules below to prevent unexpected accidents.

- Prepare container and waste cloths when performing work which oil could possibly spill. If oil spills, wipe it off immediately to prevent from penetrating into floor or flowing outside, for environmental protection.
- Follow all government and local regulations concerning waste disposal.

#### 3. BRAKE FLUID

If brake fluid gets in your eyes or on your skin, do the following:

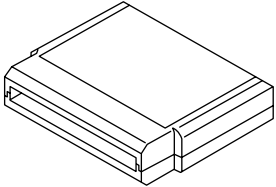

- Wash eyes and seek immediate medical attention.
  - Wash your skin with soap and then rinse thoroughly with water.
- Follow all government and local regulations concerning waste disposal.

## General Description

VEHICLE DYNAMICS CONTROL (VDC)

### D: PREPARATION TOOL

#### 1. SPECIAL TOOL

ILLUSTRATION	TOOL NUMBER	DESCRIPTION	REMARKS
 ST18482AA010	ST18482AA010	CARTRIDGE	Troubleshooting for the electrical system.
 ST22771AA030	22771AA030	Subaru Select Monitor KIT	Troubleshooting for the electrical system.

#### 2. GENERAL TOOL

TOOL NAME	REMARKS
Circuit tester	Used for measuring resistance, voltage and current.
Pressure gauge	Used for measuring oil pressure.
Oscilloscope	Used for measuring the sensor.