

General Description

PARKING BRAKE

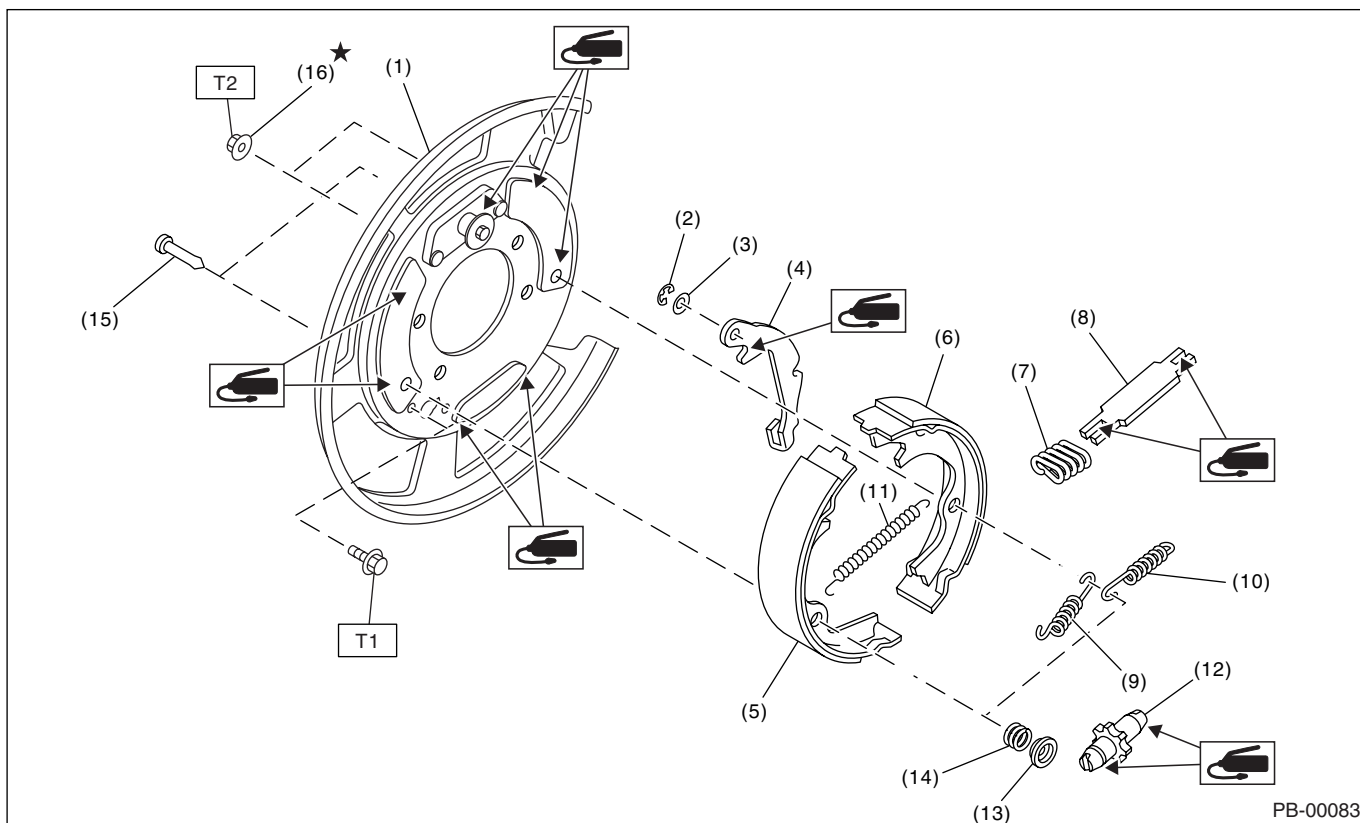
1. General Description

A: SPECIFICATION

Type	Mechanical, drum in disc rear brakes	
Effective drum diameter	mm (in)	210 (8.27)
Lining dimensions (Length×Width×Thickness)	mm (in)	238.2 × 30.0 × 4.0 (9.378 × 1.181 × 0.157)
Clearance adjustment	Manual adjustment	
Pedal stroke	notches/N (kgf, lb)	5 — 6/300 (30.6, 67)

B: COMPONENT

1. PARKING BRAKE (REAR DISC BRAKE)



- (1) Back plate
- (2) Retainer
- (3) Spring washer
- (4) Lever
- (5) Parking brake shoe (Primary)
- (6) Parking brake shoe (Secondary)
- (7) Strut spring

- (8) Strut
- (9) Primary return spring
- (10) Secondary return spring
- (11) Adjusting spring
- (12) Adjuster
- (13) Brake shoe cup
- (14) Brake shoe spring

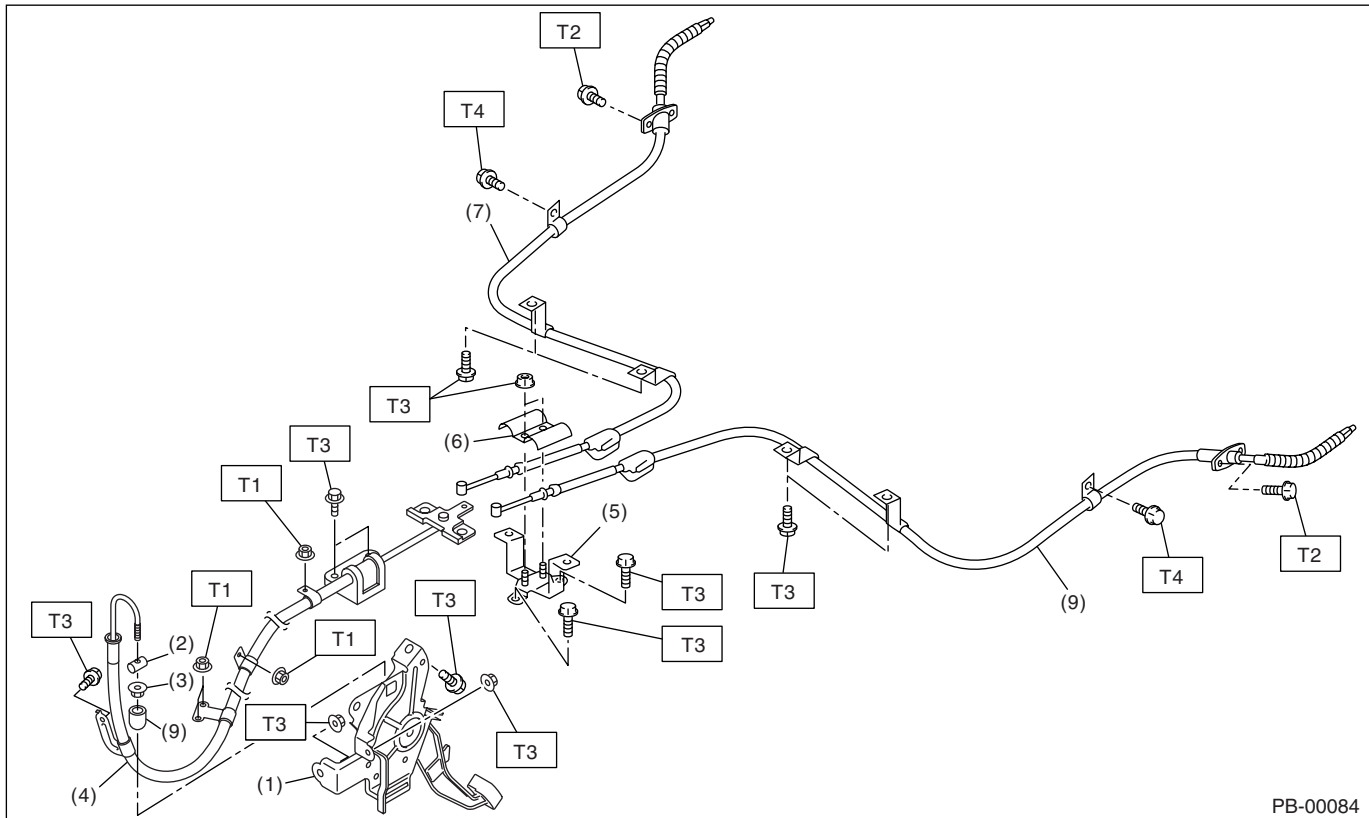
- (15) Shoe hold pin
- (16) Self locking nut (with WAX)

Tightening torque: N·m (kgf·m, ft·lb)

T1: 8 (0.8, 5.9)

T2: 75 (7.6, 55.33)

2. PARKING BRAKE CABLE



PB-00084

- | | |
|--------------------------------------|---------------------------------|
| (1) Parking brake pedal | (6) Clamp |
| (2) Spacer | (7) Rear parking brake cable RH |
| (3) Adjusting nut (Self-locking nut) | (8) Rear parking brake cable LH |
| (4) Front parking brake cable | (9) Adjuster cap |
| (5) Bracket | |

Tightening torque: N·m (kgf-m, ft-lb)
T1: 7.5 (0.76, 5.5)**T2: 8 (0.8, 5.9)****T3: 18 (1.8, 13.0)****T4: 33 (3.4, 24.3)**

C: CAUTION

- Wear work clothing, including a cap, protective goggles and protective shoes during operation.
- Before removal, installation or disassembly, be sure to clarify the failure. Avoid unnecessary removal, installation, disassembly and replacement.
- Be careful not to burn yourself, because each part on the vehicle is hot after running.
- Use SUBARU genuine grease etc. or equivalent. Do not mix grease etc. with that of another grade or from other manufacturers.
- Be sure to tighten fasteners including bolts and nuts to the specified torque.
- Place shop jacks or rigid racks at the specified points.
- Before securing a part in a vise, place cushioning material such as wood blocks, aluminum plate or cloth between the part and the vise.
- Make sure grease does not come into contact with the parking shoes.