

General Description

FRONT SUSPENSION

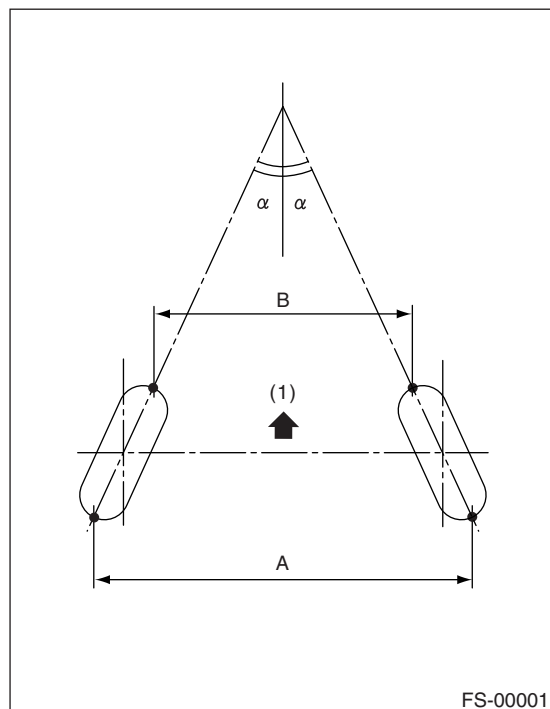
1. General Description

A: SPECIFICATION

Front	Wheel arch height [Tolerance: +12 mm -24 mm mm (in) (+0.47 in -0.94 in)]		442 (17.4)
	Camber (Tolerance: Differences between RH and LH: 45' or less)		0°00'
	Caster (Referential Value)		4°04'
	Steering angle (Tolerance: $\pm 1.5^\circ$)	Inner wheel	37.0°
		Outer wheel	32.0°
	Toe-in mm (in)	0 \pm 3 (0 \pm 0.12) Toe angle (sum of both wheels): 0° \pm 0°14'	
	Kingpin angle (Referential Value)		12°12'
Rear	Wheel arch height [Tolerance: +12 mm -24 mm mm (in) (+0.47 in -0.94 in)]		439 (17.3)
	Camber (Tolerance: Differences between RH and LH: 45' or less)		-0°31'
	Toe-in mm (in)	2 \pm 2 (0.08 \pm 0.08) Toe angle (sum of both wheels): 0° \pm 0°14'	
	Thrust angle (Tolerance: $\pm 0^\circ 30'$)		0°
	Diameter of stabilizer mm (in)		16 (0.63)

NOTE:

- Front and rear toe-in and front camber can be adjusted. Adjust if the toe-in or camber tolerance exceeds specifications.
- Other items indicated in the specifications table cannot be adjusted. If other items exceed specifications, check the suspension parts and connections for deformation, and replace with new ones as required.

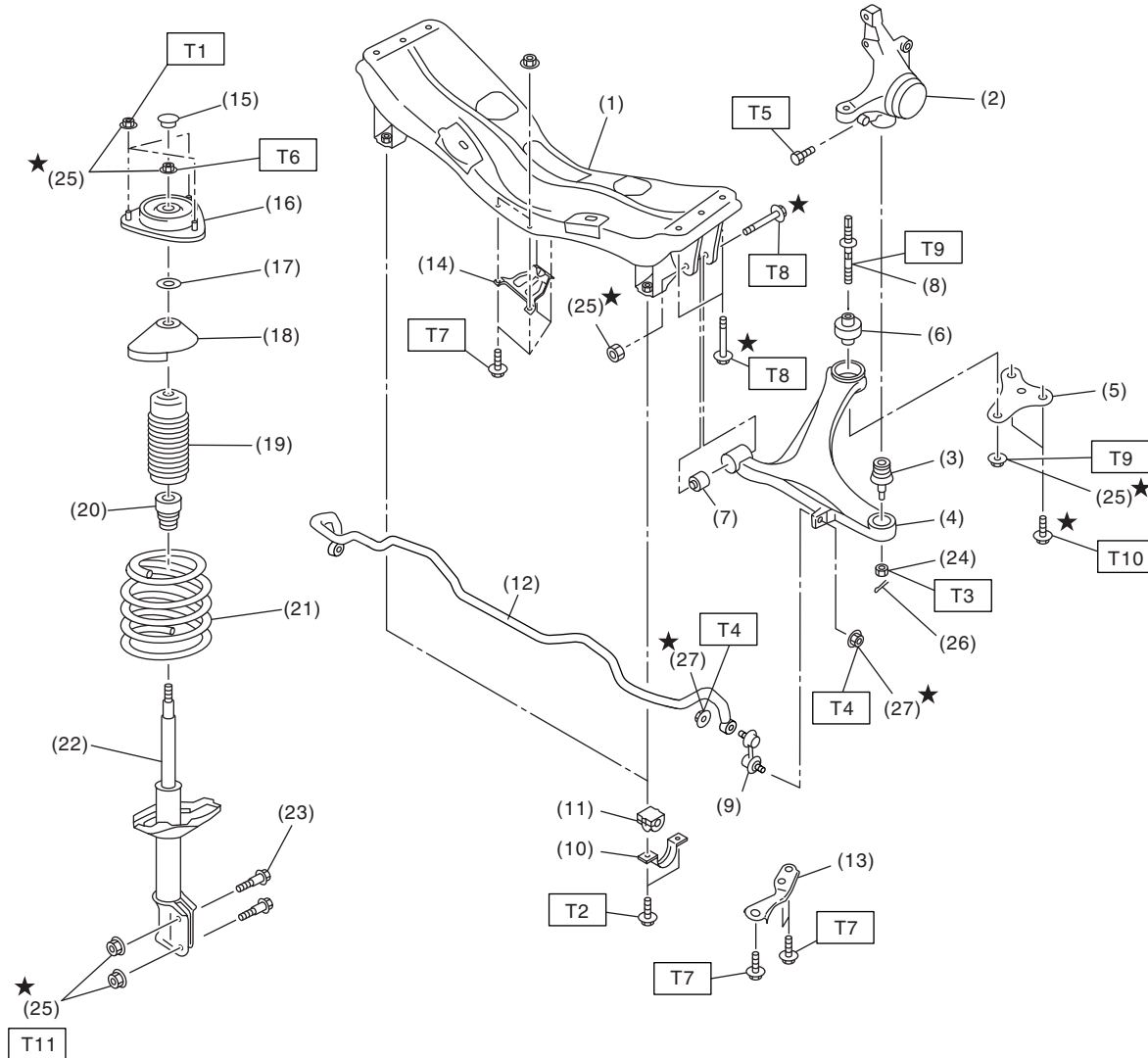


(1) Front

A - B = Positive: Toe-in, Negative: Toe-out

α = Individual toe angles

B: COMPONENT



FS-00195

- | | |
|--------------------------------|----------------------------|
| (1) Front crossmember | (15) Dust seal |
| (2) Housing | (16) Strut mount |
| (3) Ball joint | (17) Spacer |
| (4) Front arm | (18) Upper spring seat |
| (5) Arm support plate | (19) Dust cover |
| (6) Rear bushing | (20) Front helper |
| (7) Front bushing | (21) Front coil spring |
| (8) Stud bolt | (22) Front strut |
| (9) Stabilizer link | (23) Adjusting bolt |
| (10) Stabilizer clamp | (24) Castle nut |
| (11) Stabilizer bushing | (25) Self-locking nut |
| (12) Front stabilizer | (26) Cotter pin |
| (13) Crossmember support plate | (27) Flange nut (with WAX) |
| (14) Jack-up plate | |

Tightening torque: N·m (kgf-m, ft-lb)

T1: 20 (2.0, 14.5)

T2: 25 (2.5, 18.1)

T3: 45 (4.6, 33.2)

T4: 60 (6.1, 44.3)

T5: 50 (5.1, 36.9)

T6: 55 (5.6, 40.6)

T7: 60 (6.1, 44.3)

T8: 95 (9.7, 70.1)

T9: 145 (14.8, 106.9)

T10: 150 (15.3, 110.6)

T11: 175 (17.8, 129.1)

General Description

FRONT SUSPENSION

C: CAUTION

Please understand and adhere to the following general precautions. They must be strictly followed to avoid any injury to the person performing the work or persons in the area.

1. OPERATION

- Wear work clothing, including a cap, protective goggles and protective shoes during operation.
- Before removal, installation or disassembly, be sure to clarify the failure. Avoid unnecessary removal, installation, disassembly and replacement.
- Use SUBARU genuine grease etc. or equivalent. Do not mix grease etc. with that of another grade or from other manufacturers.
- Before securing a part on a vise, place cushioning material such as wood blocks, aluminum plate, or cloth between the part and the vise.
- Be sure to tighten fasteners including bolts and nuts to the specified torque.
- Place shop jacks or rigid racks at the specified points.

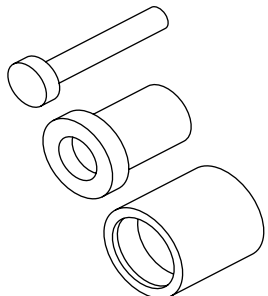
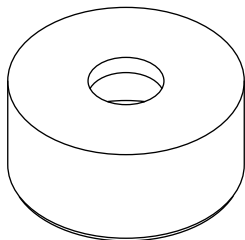
2. OIL

When handling oil, follow the rules below to prevent unexpected accidents.

- Prepare container and waste cloths when performing work which oil could possibly spill. If oil spills, wipe it off immediately to prevent from penetrating into floor or flowing outside, for environmental protection.
- Follow all government and local regulations concerning waste disposal.

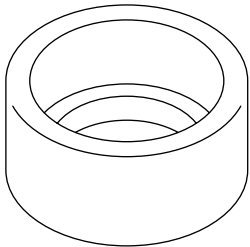
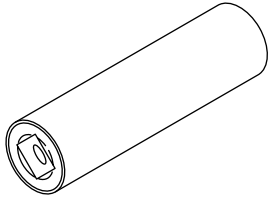
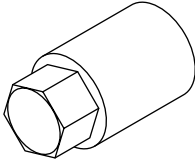
D: PREPARATION TOOL

1. SPECIAL TOOL

ILLUSTRATION	TOOL NUMBER	DESCRIPTION	REMARKS
 ST-927680000	927680000	INSTALLER & REMOVER SET	Used for replacing front arm front bushing.
 ST20299AG000	20299AG000	REMOVER	Used for replacing front arm rear bushing. Used with BASE (20999AG010).

General Description

FRONT SUSPENSION

ILLUSTRATION	TOOL NUMBER	DESCRIPTION	REMARKS
 <p>ST20299AG010</p>	20299AG010	BASE	Used for replacing front arm rear bushing. Used with REMOVER (20999AG000).
 <p>ST20299AG020</p>	20299AG020	STUD BOLT SOCKET	Used for removing and installing the stud bolt for front arm installing portion.
 <p>ST20399AG000</p>	20399AG000	STRUT MOUNT SOCKET	Used for disassembling and assembling strut mount.

2. GENERAL TOOL

TOOL NAME	REMARKS
Alignment gauge	Used for measuring wheel alignment.
Alignment gauge adapter	Used for measuring wheel alignment.
Turning radius gauge	Used for measuring wheel alignment.
Toe-in gauge	Used for toe-in measurement.
Dial gauge	Used for damper strut measurement.
Coil spring compressor	Used for strut assembly/disassembly.