

General Description

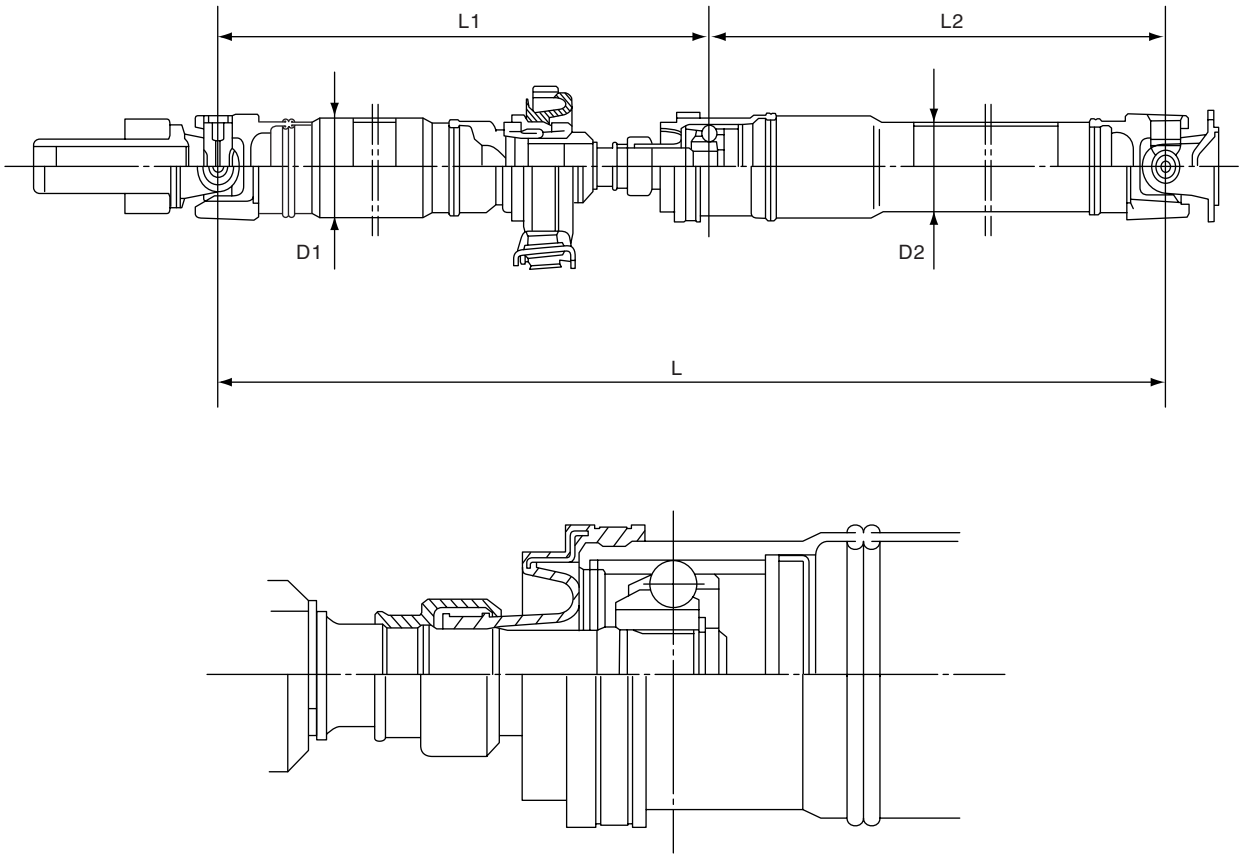
DRIVE SHAFT SYSTEM

1. General Description

A: SPECIFICATION

1. PROPELLER SHAFT

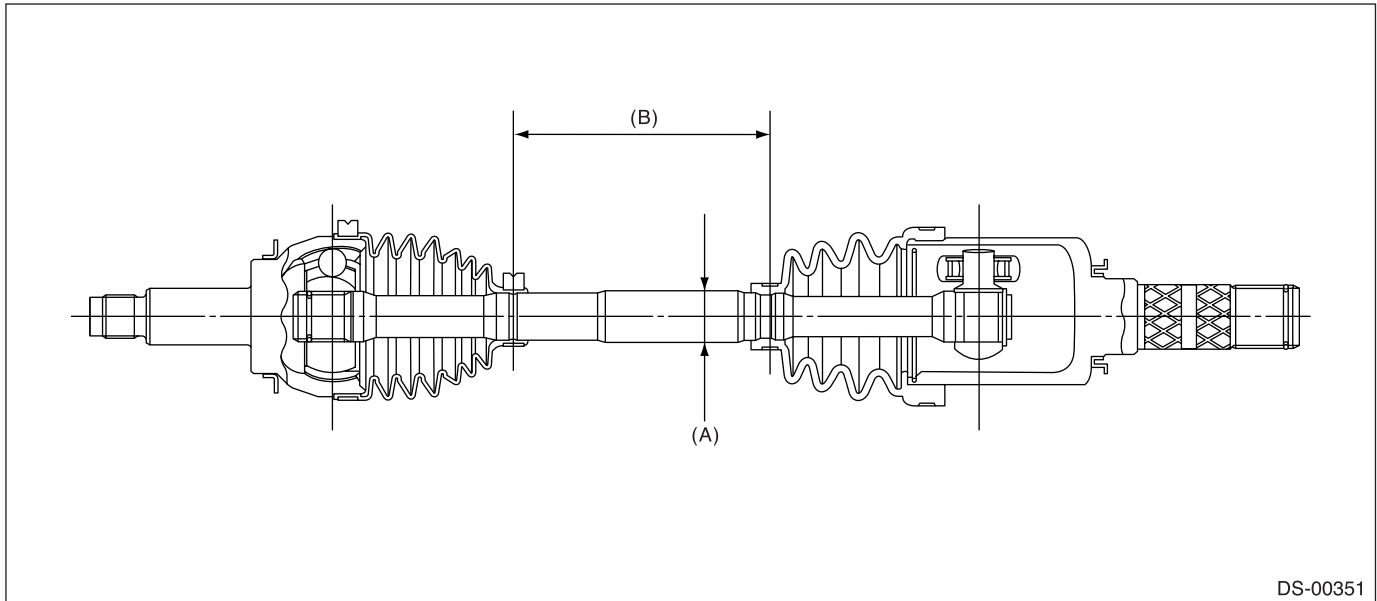
Propeller shaft type	EDJ		
Propeller shaft length: L	mm (in)	1,399 (55.08)	
Front propeller shaft Joint-to-joint length: L ₁	mm (in)	645 (25.39)	
Rear propeller shaft Joint-to-Joint length: L ₂	mm (in)	754 (29.69)	
Outer diameter of tube:	mm (in)	D ₁	63.5 (2.50)
		D ₂	57.5 (2.26)



DS-00350

2. FRONT DRIVE SHAFT ASSEMBLY

Type of drive shaft	Axle diameter ϕ D mm (in)	Axle length L mm (in)
EBJ+PTJ	26 (1.0)	388.5 (15.30)

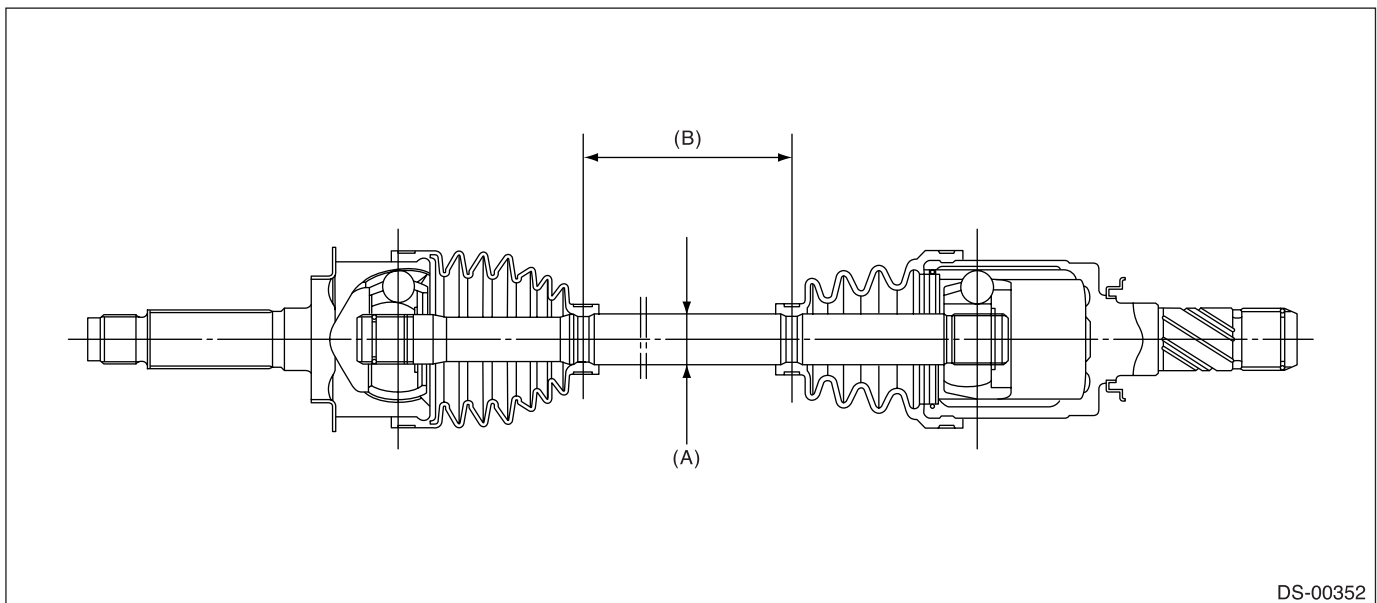


(A) Axle diameter

(B) Axle length

3. REAR DRIVE SHAFT ASSEMBLY

Type of drive shaft	Axle diameter ϕ D mm (in)	Axle length L mm (in)
EBJ+DOJ	24 (0.94)	386.8 (15.23)



(A) Axle diameter

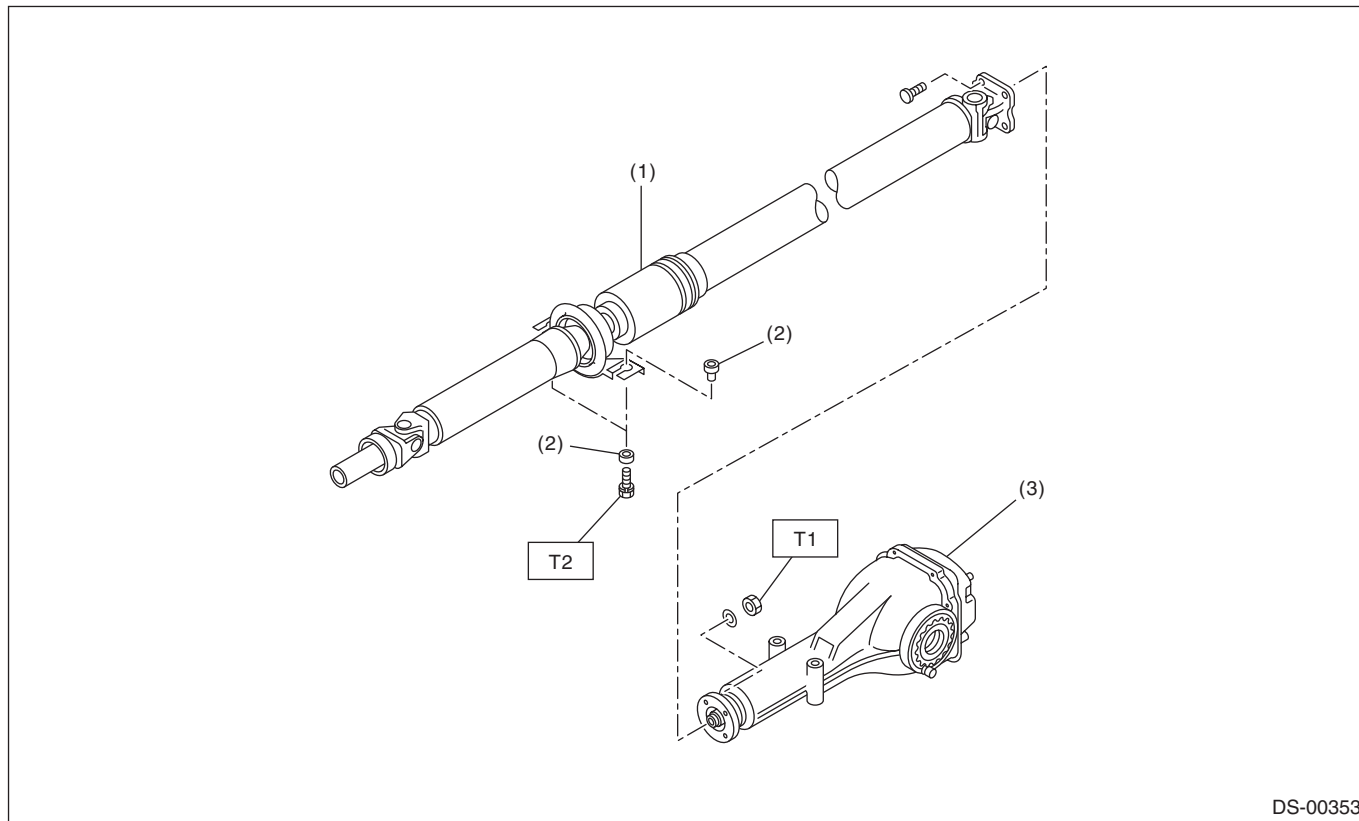
(B) Axle length

General Description

DRIVE SHAFT SYSTEM

B: COMPONENT

1. PROPELLER SHAFT



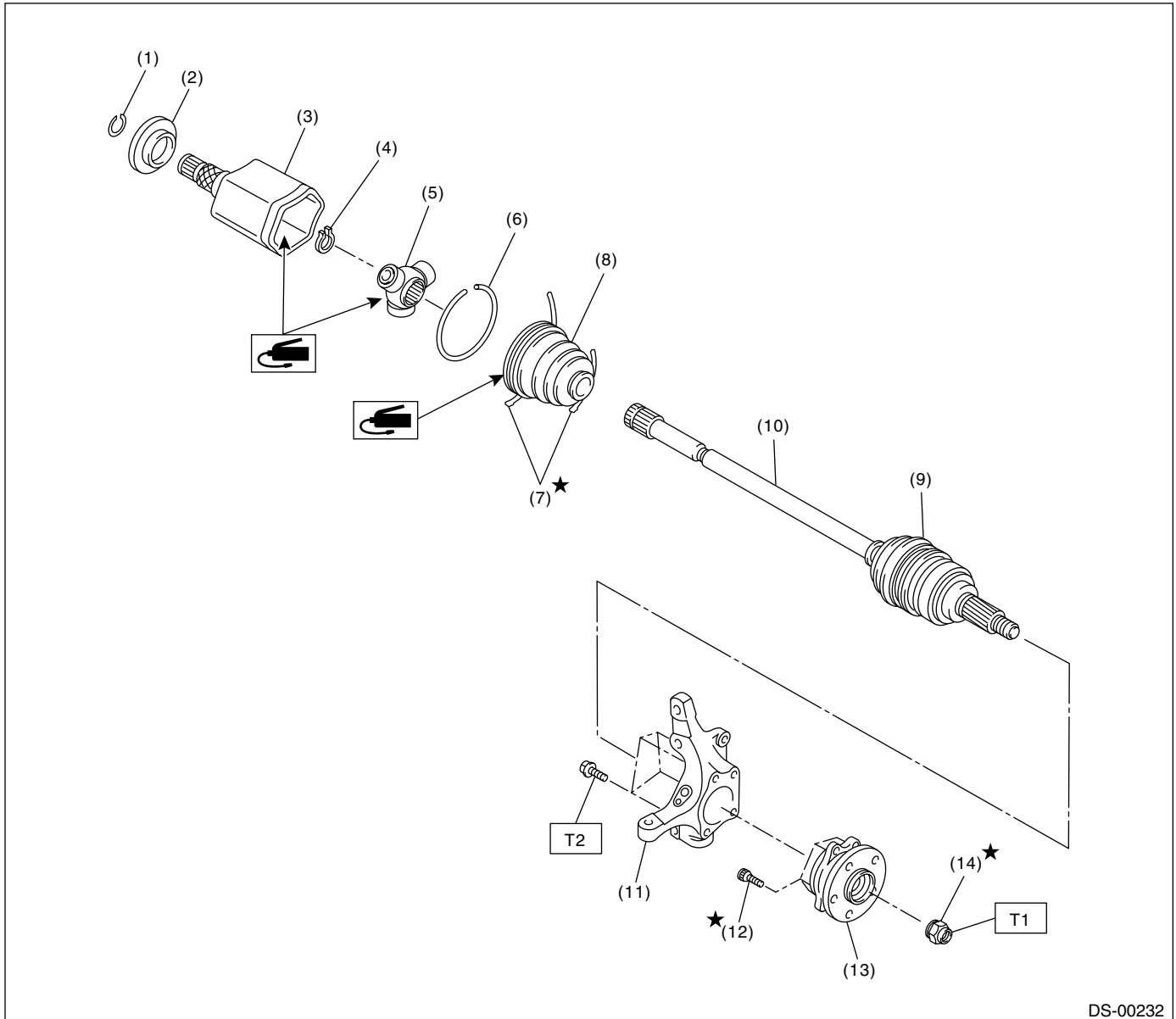
- (1) Propeller shaft
- (2) Bushing
- (3) Rear differential (VA2-type)

Tightening torque: N·m (kgf-m, ft-lb)

T1: 31 (3.2, 23.1)

T2: 52 (5.3, 38.3)

2. FRONT AXLE



DS-00232

- (1) Circlip
- (2) Baffle plate
- (3) Outer race (PTJ)
- (4) Snap ring
- (5) Trunnion
- (6) Snap ring

- (7) Boot band
- (8) Boot (PTJ)
- (9) Boot (EBJ)
- (10) EBJ shaft ASSY
- (11) Front housing
- (12) Hub bolt

- (13) Front hub unit bearing
- (14) Axle nut

Tightening torque: N-m (kgf-m, ft-lb)

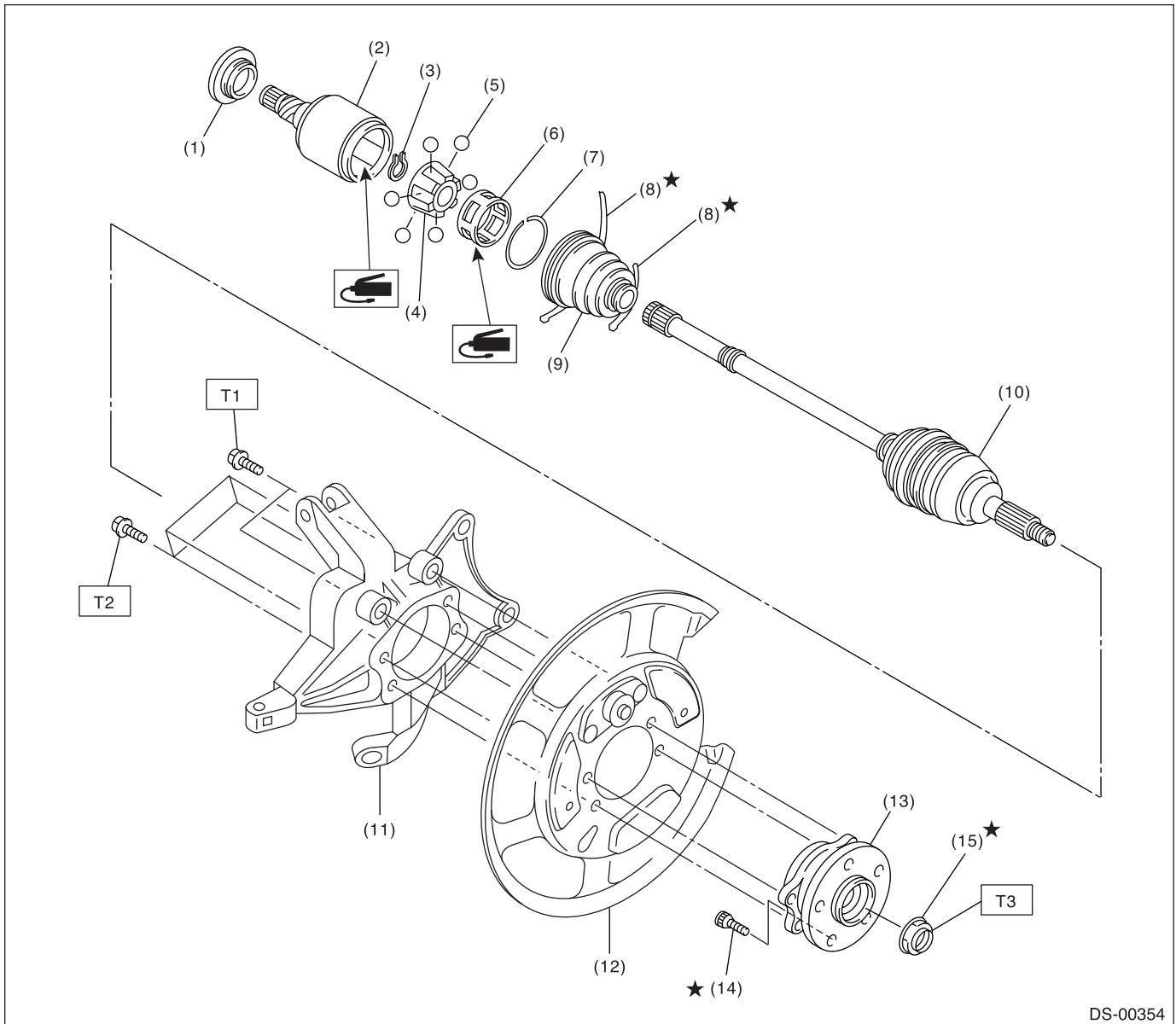
T1: 240 (24.5, 177)

T2: 65 (6.6, 47.9)

General Description

DRIVE SHAFT SYSTEM

3. REAR AXLE



- (1) Baffle plate (DOJ)
- (2) Outer race (DOJ)
- (3) Snap ring
- (4) Inner race
- (5) Ball
- (6) Cage
- (7) Snap ring

- (8) Boot band
- (9) Boot (DOJ)
- (10) EBJ shaft ASSY
- (11) Rear housing
- (12) Back plate
- (13) Rear hub unit bearing
- (14) Hub bolt

- (15) Axle nut (olive color)

Tightening torque: N·m (kgf·m, ft·lb)

T1: 75 (7.6, 55.3)

T2: 65 (6.6, 47.9)

T3: 240 (24.5, 177)

C: CAUTION

Please clearly understand and adhere to the following general precautions. They must be strictly followed to avoid any injury to the person doing the work or people in the area.

1. OPERATION

- Wear work clothing, including a cap, protective goggles and protective shoes during operation.
- Remove contamination including dirt and corrosion before removal, installation or disassembly.
- Keep the disassembled parts in order and protect them from dust and dirt.
- Before removal, installation or disassembly, be sure to clarify the failure. Avoid unnecessary removal, installation, disassembly and replacement.
- Be careful not to burn yourself, because each part on the vehicle is hot after running.
- Use SUBARU genuine grease etc. or equivalent. Do not mix grease etc. with that of another grade or from other manufacturers.
- Be sure to tighten fasteners including bolts and nuts to the specified torque.
- Place shop jacks or rigid racks at the specified points.
- Apply grease onto sliding or revolution surfaces before installation.
- Before installing snap rings, apply sufficient amount of grease to avoid damage and deformation.
- Before securing a part on a vise, place cushioning material such as wood blocks, aluminum plate, or shop cloth between the part and the vise.

2. OIL

When handling oil, follow the rules below to prevent unexpected accidents.

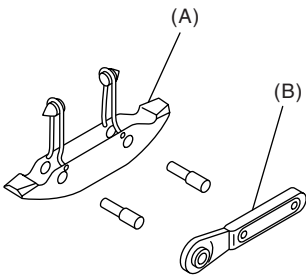
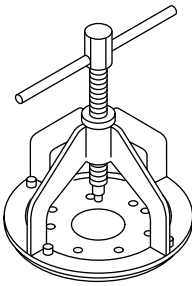
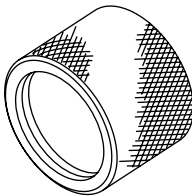
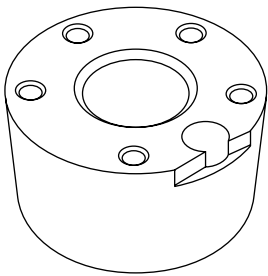
- Prepare container and waste cloths when performing work which oil could possibly spill. If oil spills, wipe it off immediately to prevent from penetrating into floor or flowing outside, for environmental protection.
- Follow all government and local regulations concerning waste disposal.

General Description

DRIVE SHAFT SYSTEM

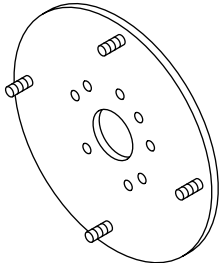
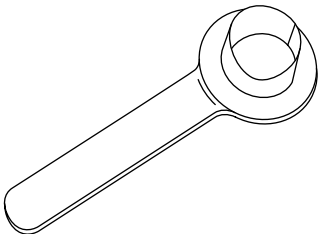
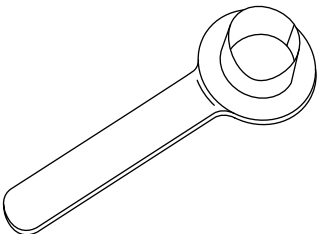
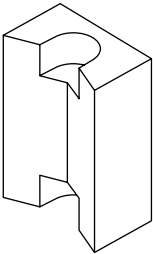
D: PREPARATION TOOL

1. SPECIAL TOOL

ILLUSTRATION	TOOL NUMBER	DESCRIPTION	REMARKS
 <p>ST-925091000</p>	925091000	BAND TIGHTENING TOOL	Used for tightening the boot band. (A) Jig for the band (B) Ratchet wrench
 <p>ST-926470000</p>	926470000	AXLE SHAFT PULLER	Used for removing the axle shaft.
 <p>ST18675AA000</p>	18675AA000	DIFFERENTIAL SIDE OIL SEAL INSTALLER	Used for installing the differential side retainer oil seal.
 <p>ST28099PA080</p>	28099PA080	HUB STAND	Used for assembling hub bolt in hub.

General Description

DRIVE SHAFT SYSTEM

ILLUSTRATION	TOOL NUMBER	DESCRIPTION	REMARKS
 <p>ST28099PA110</p>	28099PA110	AXLE SHAFT PULLER PLATE	Same as plate 2 included in AXLE SHAFT PULLER (926470000).
 <p>ST28099PA090</p>	28099PA090	OIL SEAL PROTECTOR	<ul style="list-style-type: none"> Used for installing the rear drive shaft to the rear differential. For protecting the oil seal.
 <p>ST28399SA010</p>	28399SA010	OIL SEAL PROTECTOR	<ul style="list-style-type: none"> Used for installing front drive shaft into front differential. For protecting the oil seal.
 <p>ST28399AG000</p>	28399AG000 (Newly adopted tool)	HUB STAND	Used for extracting hub bolt.

2. GENERAL TOOL

DESCRIPTION	REMARKS
Puller	Used for removing the ball joint from knuckle arm.
Dial gauge	Used for inspecting the propeller shaft run-out.
Extension cap	Used for preventing leakage of gear oil or ATF.
Bar	Used for extracting drive shaft.