

# General Description

## DIFFERENTIALS

### 1. General Description

#### A: SPECIFICATION

##### 1. REAR DIFFERENTIAL

When replacing a rear differential assembly, select the correct one according to the following table.

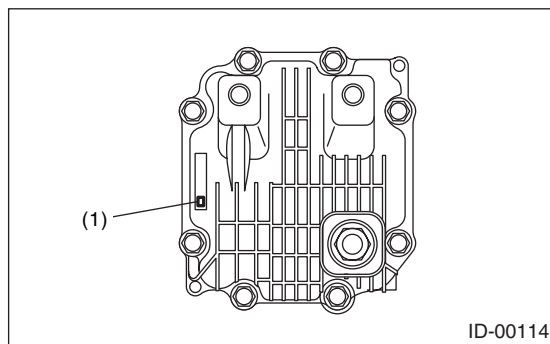
NOTE:

- Using a different rear differential assembly will cause the drive train and tires to drag or emit abnormal noise.
- For option code, refer to “ID” section. <Ref. to ID-2, IDENTIFICATION, Identification.>

Rear differential type	VA2-type
Identification	XX
LSD type	—
Type of gear	Hypoid gear
Gear ratio (Number of gear teeth)	3.583 (43/12)
Oil capacity	0.8 ℓ (0.8 US qt, 0.7 Imp qt)
Rear differential gear oil	GL-5

##### 2. IDENTIFICATION

Identification label positions are shown in the following figures. For details concerning identification, refer to the “ID” section.



(1) Identification

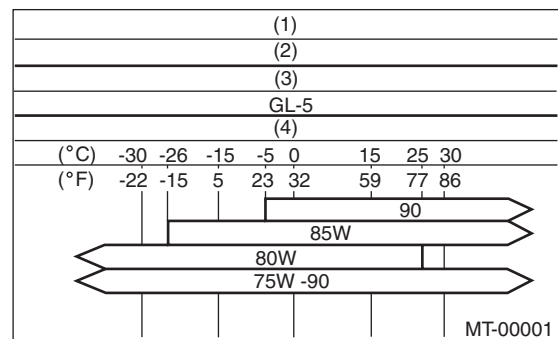
##### 3. REAR DIFFERENTIAL GEAR OIL

**Recommended gear oil:**

**GL-5 (75W-90)**

NOTE:

Each oil manufacturer has its base oil and additives. Thus, do not mix two or more brands.



- (1) Item
- (2) Rear differential gear oil
- (3) API classification
- (4) SAE viscosity No. and applicable temperature

##### 4. SERVICE DATA

Drive pinion bearing preload	Measure with spring measurement. (Measured from the companion flange bolt) N (kgf, lb)	12.7 — 32.2 (1.3 — 3.28, 2.9 — 7.24)
	Measure with torque wrench N·m (kgf-m, ft-lb)	0.48 — 1.22 (0.045 — 0.124, 0.32 — 0.9)
Hypoid driven gear to drive pinion backlash	mm (in)	0.10 — 0.15 (0.0039 — 0.0059)

# General Description

DIFFERENTIALS

## 5. ADJUSTING PARTS

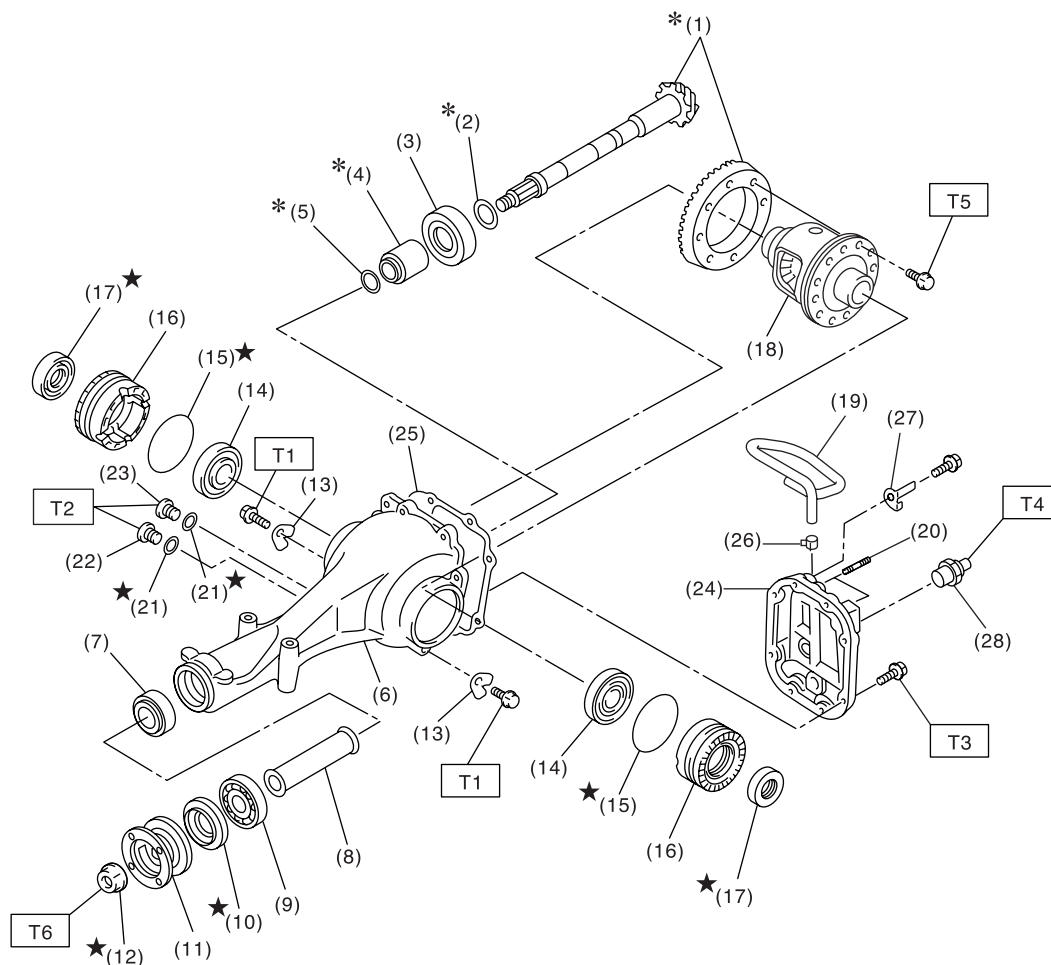
Drive pinion bearing preload	Measure with spring measurement. (Measured from the companion flange bolt) N (kgf, lb)	12.7 — 32.2 (1.3 — 3.28, 2.9 — 7.24)
	Measure with torque wrench N·m (kgf-m, ft-lb)	0.48 — 1.22 (0.045 — 0.124, 0.32 — 0.9)
Preload adjusting collar	Part No.	Length mm (in)
	31454AA250	51.05 (2.010)
	31454AA260	51.25 (2.018)
	31454AA270	51.35 (2.022)
	31454AA280	51.45 (2.026)
	31454AA290	51.55 (2.030)
	31454AA300	51.65 (2.033)
	31454AA310	51.75 (2.037)
	31454AA320	51.85 (2.041)
	31454AA330	52.05 (2.049)
Preload adjusting washer	Part No.	Thickness mm (in)
	38336AA430	1.500 (0.0591)
	38336AA440	1.513 (0.0596)
	38336AA450	1.525 (0.0600)
	38336AA460	1.538 (0.0606)
	38336AA470	1.550 (0.0610)
	38336AA480	1.563 (0.0615)
	38336AA490	1.575 (0.0620)
	38336AA500	1.588 (0.0625)
	38336AA510	1.600 (0.0630)
	38336AA520	1.613 (0.0635)
	38336AA530	1.625 (0.0640)
	38336AA540	1.638 (0.0645)
	38336AA550	1.650 (0.0650)
	38336AA560	1.663 (0.0655)
	38336AA570	1.675 (0.0659)
	38336AA580	1.688 (0.0665)
	38336AA590	1.700 (0.0669)
	38336AA600	1.713 (0.0674)
	38336AA610	1.725 (0.0679)
	38336AA620	1.738 (0.0684)
	38336AA630	1.750 (0.0689)
	38336AA640	1.763 (0.0694)
	38336AA650	1.775 (0.0699)
Pinion height adjusting washer	Part No.	Thickness mm (in)
	32295AA350	0.150 (0.0059)
	32295AA360	0.175 (0.0069)
	32295AA370	0.200 (0.0079)
	32295AA380	0.225 (0.0089)
	32295AA390	0.250 (0.0098)
Hypoid driven gear to drive pinion backlash	32295AA400	0.275 (0.0108)
	Limit mm (in)	0.10 — 0.15 (0.0039 — 0.0059)

# General Description

## DIFFERENTIALS

### B: COMPONENT

#### 1. REAR DIFFERENTIAL (VA2-TYPE)



DI-00469

(1) Hypoid driven gear and drive pinion set	(13) Lock plate	(26) Clip
(2) Pinion height adjusting washer	(14) Side bearing	(27) Stay ground
(3) Rear bearing	(15) O-ring	(28) Rear differential oil temperature switch
(4) Bearing preload adjusting collar	(16) Axle shaft holder	
(5) Bearing preload adjusting washer	(17) Side oil seal	
(6) Differential carrier	(18) Differential case ASSY	
(7) Front bearing	(19) Air breather hose	
(8) Collar	(20) Stud bolt	
(9) Pilot bearing	(21) Gasket	
(10) Front oil seal	(22) Oil filler plug	
(11) Companion flange	(23) Oil drain plug	
(12) Self-locking nut	(24) Rear cover	
	(25) Gasket	

#### Tightening torque: N·m (kgf-m, ft-lb)

**T1: 25 (2.5, 18.1)**

**T2: 29 (3.0, 21.4)**

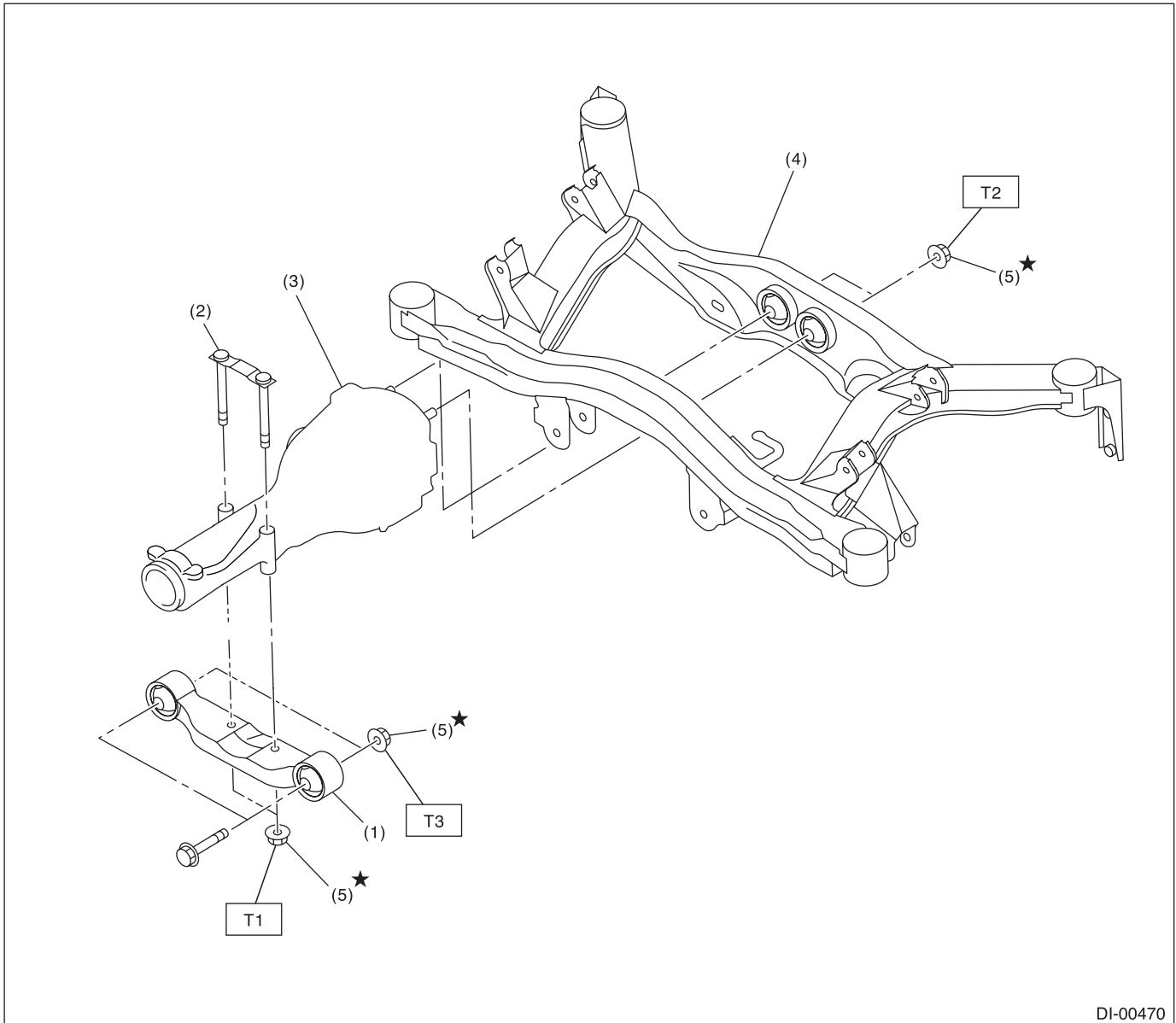
**T3: 34 (3.5, 25.3)**

**T4: 60 (6.1, 44.3)**

**T5: 62 (6.3, 45.6)**

**T6: 191 (19.5, 141)**

### 2. REAR DIFFERENTIAL MOUNTING SYSTEM



DI-00470

- |                                    |                      |
|------------------------------------|----------------------|
| (1) Rear differential front member | (5) Self-locking nut |
| (2) Rear differential member plate |                      |
| (3) Rear differential ASSY         |                      |
| (4) Sub Frame                      |                      |

***Tightening torque: N·m (kgf-m, ft-lb)***

***T1: 65 (6.6, 48)***

***T2: 70 (7.1, 51)***

***T3: 110 (11.2, 81)***

## General Description

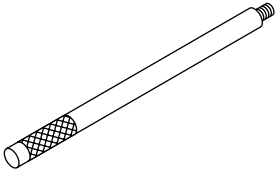
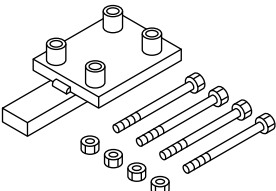
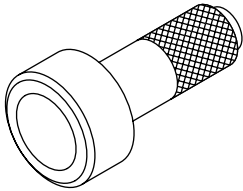
### DIFFERENTIALS

#### C: CAUTION

- Wear work clothing, including a cap, protective goggles and protective shoes during operation.
- Remove contamination including dirt and corrosion before removal, installation or disassembly.
- Keep the disassembled parts in order and protect them from dust and dirt.
- Before removal, installation or disassembly, be sure to clarify the failure. Avoid unnecessary removal, installation, disassembly and replacement.
- Be careful not to burn yourself, because each part on the vehicle is hot after running.
- Use SUBARU genuine grease etc. or equivalent. Do not mix gear oil, grease, etc. with those of different grades or from other manufacturers.
- Be sure to tighten fasteners including bolts and nuts to the specified torque.
- Place shop jacks or rigid racks at the specified points.
- Apply gear oil onto sliding or revolution surfaces before installation.
- Before installing the O-ring or snap ring, apply a sufficient amount of gear oil to avoid damage and deformation.
- Before securing a part on a vise, place cushioning material such as wood blocks, aluminum plate, or cloth between the part and the vise.
- Avoid damaging the mating surface of the case.

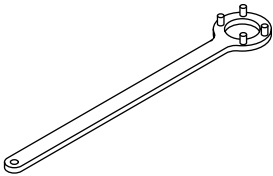
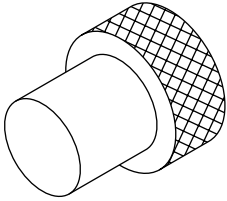
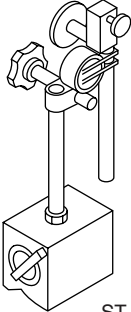
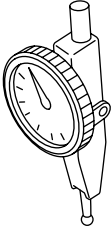
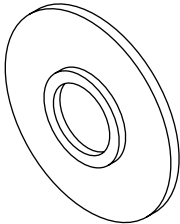
#### D: PREPARATION TOOL

##### 1. SPECIAL TOOL

ILLUSTRATION	TOOL NUMBER	DESCRIPTION	REMARKS
 ST-398477701	398477701	HANDLE	Used for installing the front and rear bearing cones.
 ST-398217700	398217700	ATTACHMENT SET	Stand for rear differential carrier disassembly and assembly.
 ST-498447120	498447120	INSTALLER	Used for installing the front oil seal.

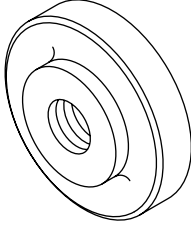
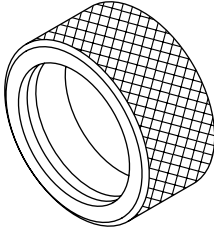
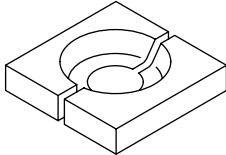
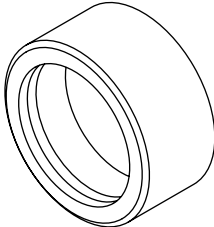
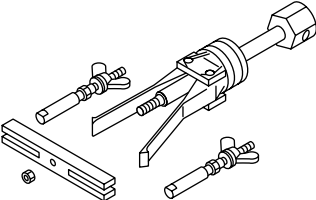
# General Description

## DIFFERENTIALS

ILLUSTRATION	TOOL NUMBER	DESCRIPTION	REMARKS
 <p>ST-498427200</p>	498427200	FLANGE WRENCH	Used for stopping rotation of companion flange when removing and tightening self-lock nut.
 <p>ST-399780104</p>	399780104	WEIGHT	Used for installing the front bearing cone and the pilot bearing companion flange.
 <p>ST-498247001</p>	498247001	MAGNET BASE	<ul style="list-style-type: none"> <li>• Used for measuring backlash between side gear and pinion, and hypoid gear.</li> <li>• Used with DIAL GAUGE (498247100).</li> </ul>
 <p>ST-498247100</p>	498247100	DIAL GAUGE	<ul style="list-style-type: none"> <li>• Used for measuring backlash between side gear and pinion, and hypoid gear.</li> <li>• Used with MAGNET BASE (498247001).</li> </ul>
 <p>ST-398177700</p>	398177700	INSTALLER	Used for installing the rear bearing cone.

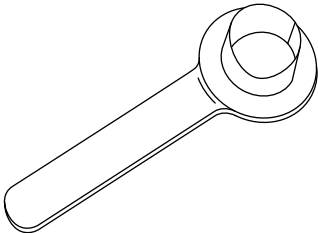
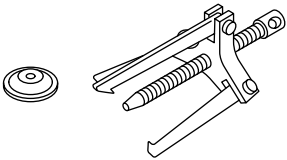
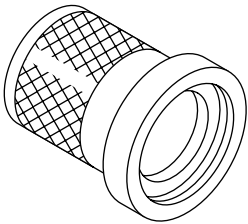
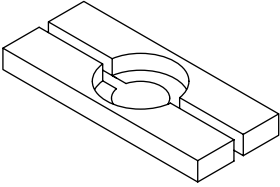
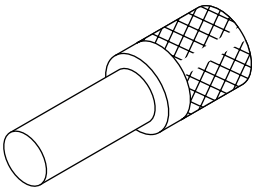
# General Description

## DIFFERENTIALS

ILLUSTRATION	TOOL NUMBER	DESCRIPTION	REMARKS
 <p>ST-398477703</p>	398477703	DRIFT 2	Used for press-fitting bearing race (rear) of differential carrier.
 <p>ST-398437700</p>	398437700	DRIFT	Used for installing the side oil seal.
 <p>ST-398517700</p>	398517700	REPLACER	Used for removing rear bearing cone.
 <p>ST-398487700</p>	398487700	DRIFT	Used for press-fitting side bearing cone.
 <p>ST-398527700</p>	398527700	PULLER ASSY	Used for removing front oil seal.

# General Description

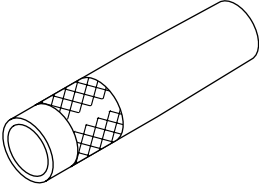
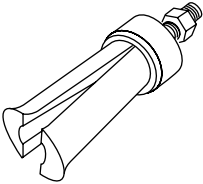
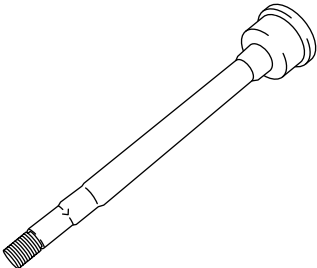
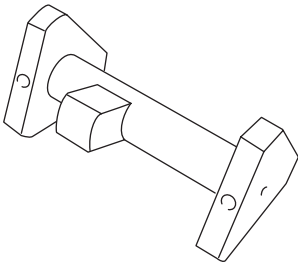
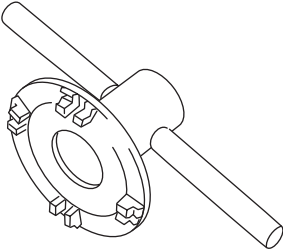
## DIFFERENTIALS

ILLUSTRATION	TOOL NUMBER	DESCRIPTION	REMARKS
 ST28099PA090	28099PA090	OIL SEAL PROTECTOR	<ul style="list-style-type: none"> <li>Used for installing the rear drive shaft to the rear differential.</li> <li>For oil seal protection</li> </ul>
 ST-399703600	399703600	PULLER ASSY	Used for removing companion flange.
 ST-899874100	899874100	INSTALLER	Used for installing the companion flange.
 ST-498077000	498077000	REMOVER	Used for removing the differential side bearing cone.
 ST-899864100	899864100	REMOVER	Used for removing the differential side bearing.



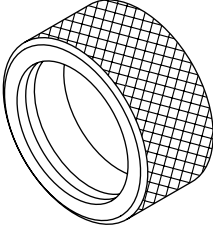
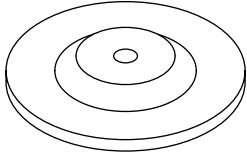
# General Description

## DIFFERENTIALS

ILLUSTRATION	TOOL NUMBER	DESCRIPTION	REMARKS
 ST-499277200	499277200	INSTALLER	Used for installing the front bearing cone.
 ST18758AA000	18758AA000	PULLER	Used for removing side bearing cup.
 ST18678AA000	18678AA000	DUMMY SHAFT	Used for adjusting pinion height and preload.
 ST18831AA010	18831AA010	DIFFERENTIAL CARRIER GAUGE	Used for adjusting pinion height.
 ST18630AA010	18630AA010	WRENCH ASSY	Used for removing and installing the side oil seal holder.

# General Description

DIFFERENTIALS

ILLUSTRATION	TOOL NUMBER	DESCRIPTION	REMARKS
 <p>ST-498447100</p>	498447100	INSTALLER	Used for installing the oil seal.
 <p>ST-399520105</p>	399520105	SEATS	<ul style="list-style-type: none"> <li>Used for removing the side bearing cone.</li> <li>Used with PULLER SET (899524100).</li> </ul>

## 2. GENERAL TOOL

TOOL NAME	REMARKS
Transmission jack	Used for assembly/disassembly of the rear differential.
Puller	Used for removing the side bearing retainer.
Thickness gauge	Used for measuring clearance.
Hexagon wrench	Used for installing and removing the filler and drain plug.
Tire lever	Used for removing the front drive shaft.