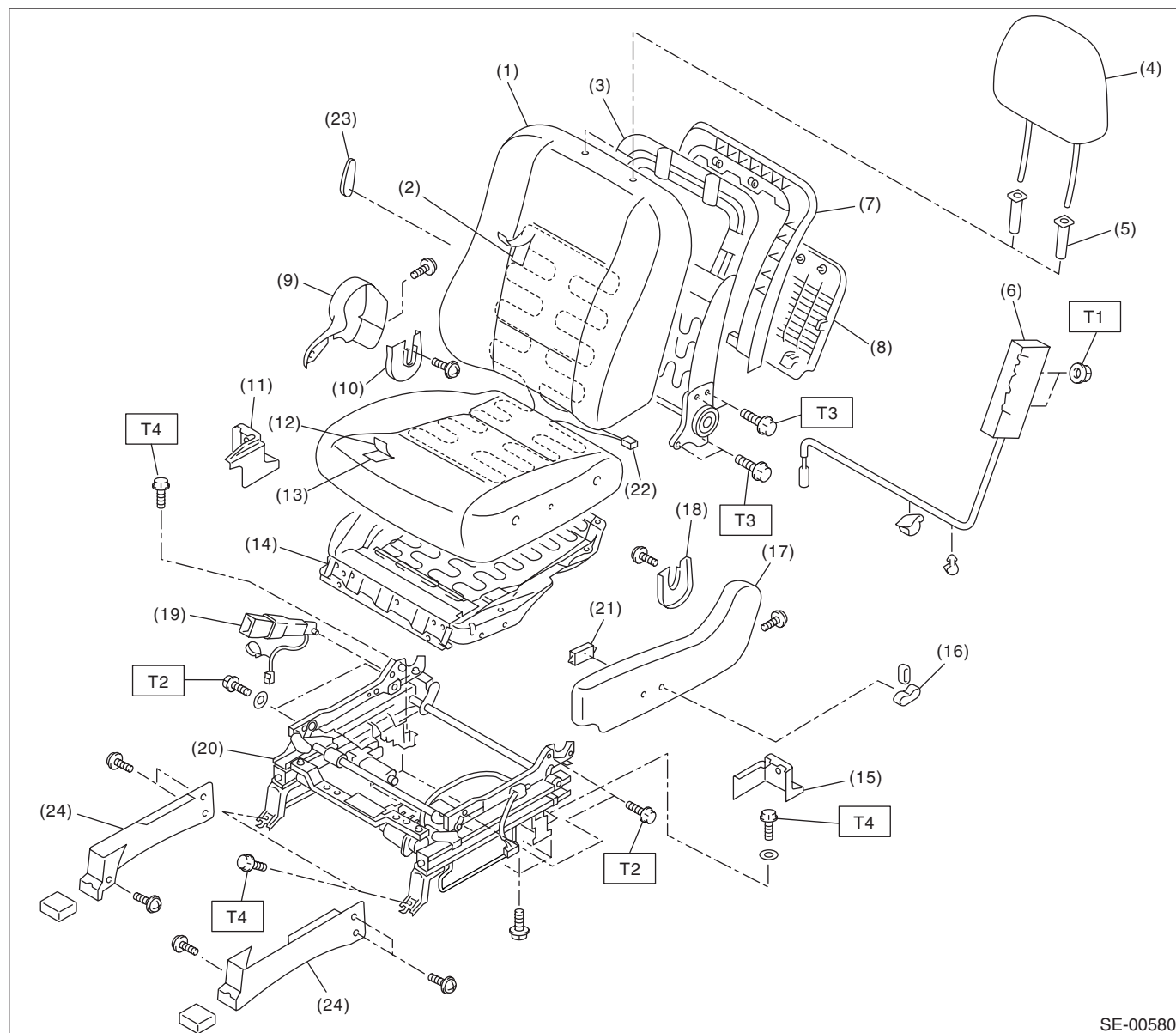


## 1. General Description

### A: COMPONENT

#### 1. FRONT SEAT (DRIVER'S SEAT)



SE-00580

- |                            |                              |                             |
|----------------------------|------------------------------|-----------------------------|
| (1) Backrest cover         | (11) Rear leg cover inside   | (21) Power seat switch unit |
| (2) Backrest pad           | (12) Seat cushion cover      | (22) Seat heater unit       |
| (3) Backrest frame ASSY    | (13) Seat cushion pad        | (23) Lumbar support lever   |
| (4) Headrest ASSY          | (14) Seat cushion frame ASSY | (24) Slide rail cover       |
| (5) Headrest lock bushing  | (15) Rear leg cover outside  |                             |
| (6) Side airbag module     | (16) Power seat switch knob  |                             |
| (7) Cover frame            | (17) Seat side cover outside |                             |
| (8) Backrest back cover    | (18) Hinge inner cover LH    |                             |
| (9) Seat side cover inside | (19) Inner seat belt ASSY    |                             |
| (10) Hinge inner cover RH  | (20) Slide rail ASSY         |                             |

**Tightening torque: N·m (kgf·m, ft·lb)**

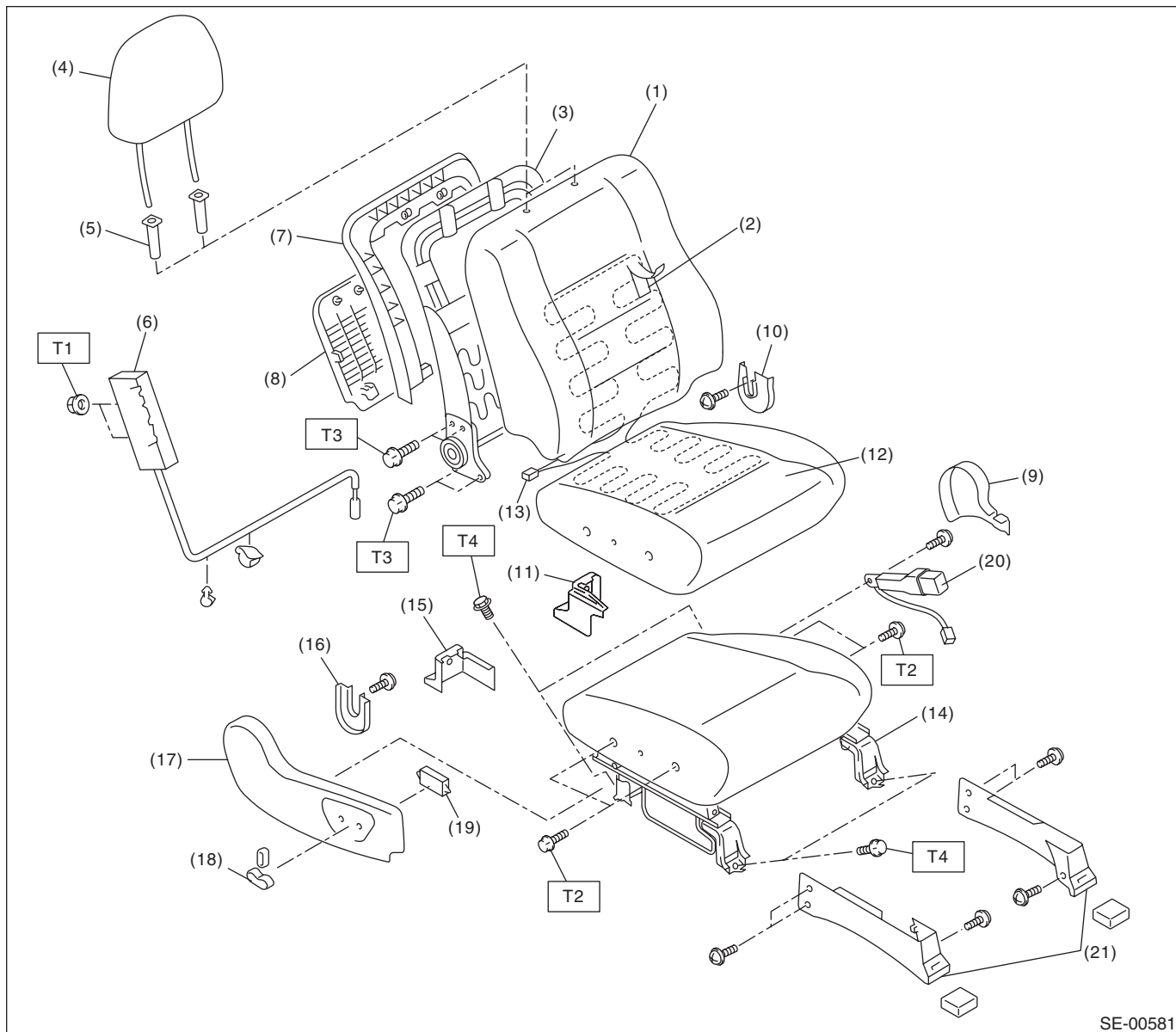
**T1: 6 (0.61, 4.43)**

**T2: 17.6 (1.79, 12.7)**

**T3: 52 (5.30, 37.6)**

**T4: 53 (5.40, 38.3)**

## 2. FRONT SEAT (DRIVER'S SEAT)



SE-00581

- |                            |                                    |                             |
|----------------------------|------------------------------------|-----------------------------|
| (1) Backrest cover         | (10) Hinge inner cover LH          | (19) Power seat switch unit |
| (2) Backrest pad           | (11) Rear leg cover inside         | (20) Inner seat belt ASSY   |
| (3) Backrest frame ASSY    | (12) Seat cushion cover            | (21) Slide rail cover       |
| (4) Headrest ASSY          | (13) Seat heater unit              |                             |
| (5) Headrest lock bushing  | (14) Seat cushion pad & frame ASSY |                             |
| (6) Side airbag module     | (15) Rear leg cover outside        |                             |
| (7) Cover frame            | (16) Hinge inner cover RH          |                             |
| (8) Backrest back cover    | (17) Seat side cover outside       |                             |
| (9) Seat side cover inside | (18) Power seat switch knob        |                             |

### **Tightening torque: N·m (kgf-m, ft-lb)**

**T1: 6 (0.61, 4.43)**

**T2: 17.6 (1.79, 12.7)**

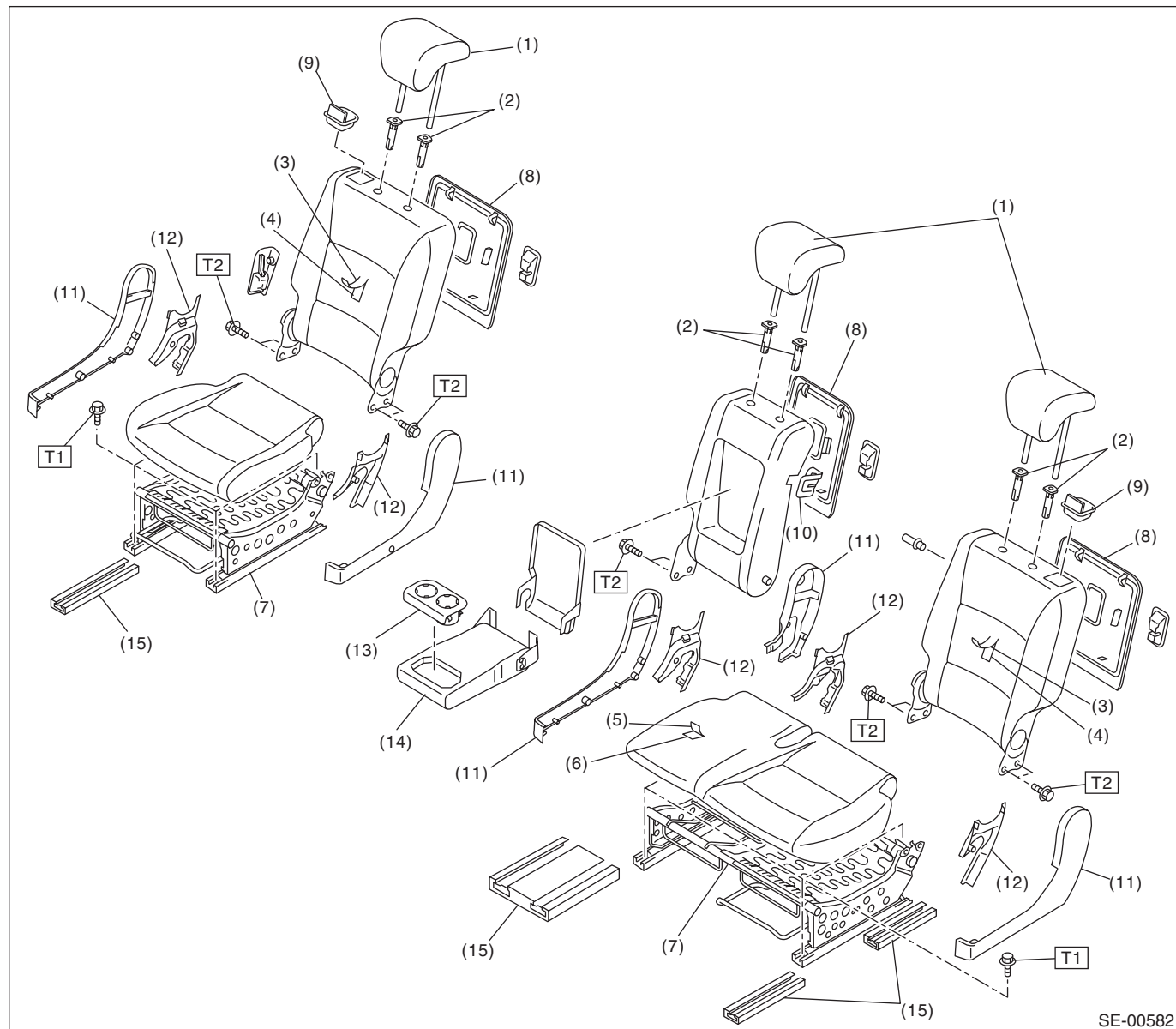
**T3: 52 (5.30, 37.6)**

**T4: 53 (5.40, 38.3)**

# General Description

## SEATS

### 3. SECOND-ROW SEATS



- |                        |                            |
|------------------------|----------------------------|
| (1) Headrest           | (8) Backrest back cover    |
| (2) Lock bushing       | (9) Holder                 |
| (3) Backrest cover     | (10) Seat back latch cover |
| (4) Backrest pad       | (11) Hinge outer cover     |
| (5) Seat cushion cover | (12) Hinge inner cover     |
| (6) Seat cushion pad   | (13) Cup holder            |
| (7) Slide rail ASSY    |                            |

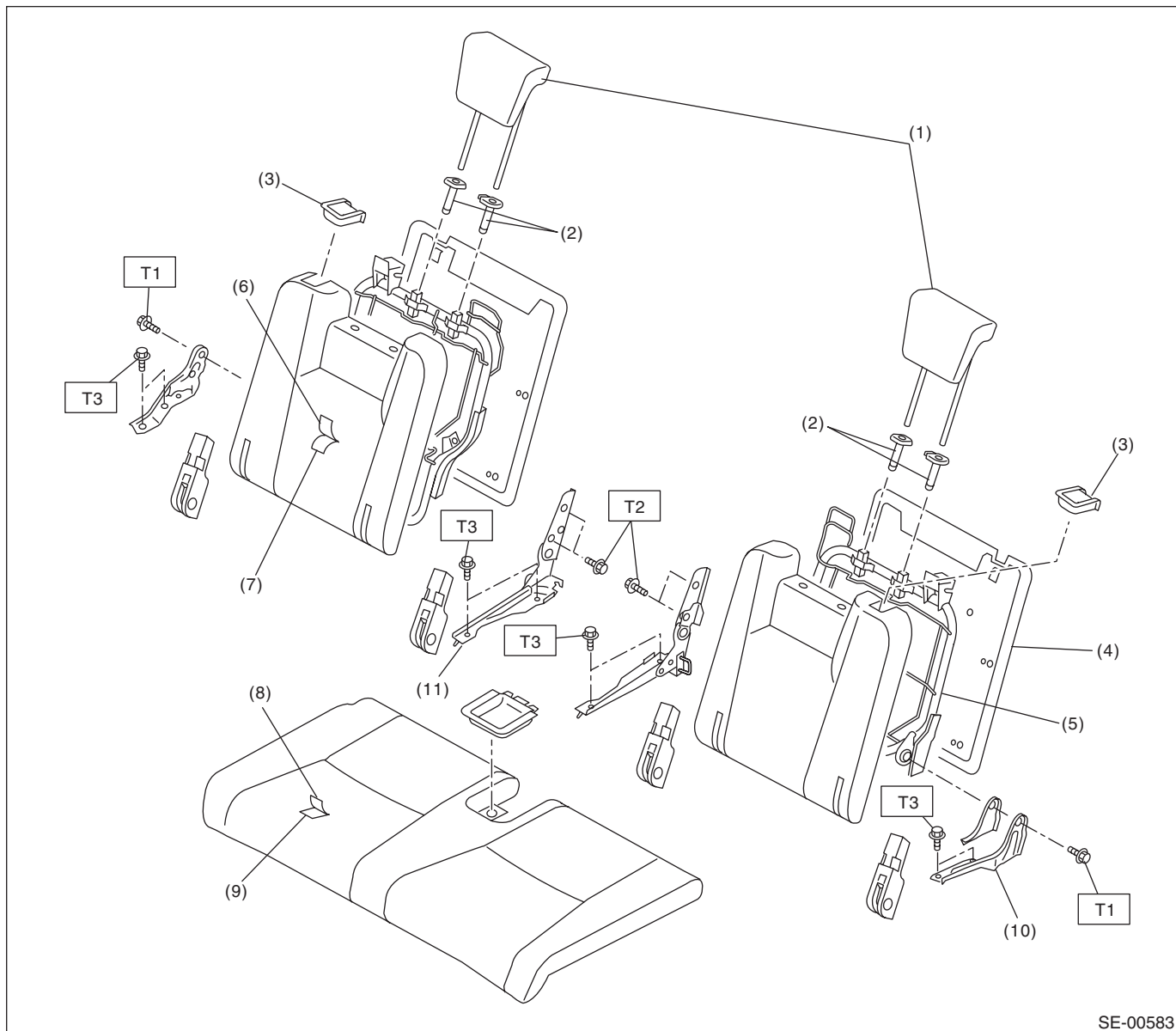
- |                       |
|-----------------------|
| (14) Armrest          |
| (15) Slide rail cover |

**Tightening torque: N-m (kgf-m, ft-lb)**

**T1: 40 (4.08, 28.9)**

**T2: 52 (5.30, 37.6)**

## 4. THIRD-ROW SEATS



SE-00583

- |                           |                        |
|---------------------------|------------------------|
| (1) Headrest              | (7) Backrest pad       |
| (2) Headrest lock bushing | (8) Seat cushion cover |
| (3) Hinge lever ASSY      | (9) Seat cushion pad   |
| (4) Backrest back cover   | (10) Hinge plate       |
| (5) Backrest frame        | (11) Inner hinge ASSY  |
| (6) Backrest cover        |                        |

**Tightening torque: N-m (kgf-m, ft-lb)**

**T1: 10 (1.01, 7.23)**

**T2: 52 (5.30, 37.6)**

**T3: 53 (5.40 38.3)**

## General Description

### SEATS

---

#### B: CAUTION

- If the seat cushion cover is removed or replaced, make sure to perform passenger detection system adjustment after installing the seat to the vehicle. <Ref. to OD(diag)-18, SYSTEM CALIBRATION (REZEROING), OPERATION, Subaru Select Monitor.>

Failure to do so may cause improper operation of the passenger detection system.

- The passenger detection system (passenger seat only) control unit and the passenger detection sensor are fixed to the seat cushion frame. Never remove the passenger detection control unit or the pressure sensor from the seat cushion frame.
- Do not replace the seat cushion pad by itself. Always replace the seat cushion pad and frame assembly as a set. The seat cushion pad and cushion frame are adjusted as a set at the time of manufacture. If cushion pads and cushion frames are combined from those of other vehicles or other sets, the passenger detection system may not operate properly.
- If the seat cushion cover is removed, make sure to replace the wire on the seat cushion side with a new wire.
- When removing the front seat from a side airbag loaded vehicle, follow cautions given in the airbag section. <Ref. to AB-4, CAUTION, General Description.>

#### C: PREPARATION TOOL

##### 1. GENERAL TOOL

TOOL NAME	REMARKS
Long nose plier	Used for removing the hog ring.
Hog ring pliers	Used for installing the hog ring.
TORX® T50	Used for removing/installing inner seat belt assembly and removing/installing/disassembling second-row seats.