

## 3. General Description

### A: CAUTION

1) Never remove the occupant detection control module, occupant detection sensor and seat cushion from seat frame because the occupant detection system is integrated into seat frame as one unit.

2) Always perform "system calibration (Rezeroing)" when removing or removing and disassembling the passenger's seat. <Ref. to OD(diag)-18, SYSTEM CALIBRATION (REZEROING), OPERATION, Subaru Select Monitor.>

3) Never connect the battery in reverse polarity.

- Occupant detection system may be destroyed instantly.

4) Do not disconnect the battery terminals while the engine is running.

- A large counter electromotive force will be generated in the generator, and this voltage may damage electronic parts such as occupant detection control module.

5) Before disconnecting the connectors of each sensor and control module, be sure to turn the ignition switch to OFF and wait for 20 seconds or more.

- Occupant detection control module may be damaged.

6) Every A/C-related part is a precision part. Do not drop them.

7) Airbag system wiring harness is routed near the A/C control panel and junction box.

### CAUTION:

- For airbag system, yellow-colored wiring harness and connectors are all used. Do not use the electrical test equipment on these circuits.

- Be careful not to damage the airbag system wiring harness when servicing the occupant detection system.

- Refer to "Airbag System" when repairing the occupant detection system. <Ref. to AB(diag)-4, CAUTION, General Description.>

### B: INSPECTION

Measure the battery voltage and check electrolyte.

**Standard voltage: 12 V**

**Specific gravity: Above 1.260**

## General Description

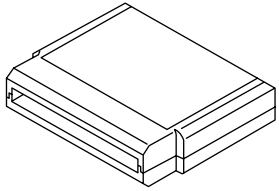

### OCCUPANT DETECTION SYSTEM (DIAGNOSTICS)

## C: PREPARATION TOOL

### CAUTION:

To measure the voltage and resistance of airbag system and occupant detection system components, be sure to use the specified test harness.

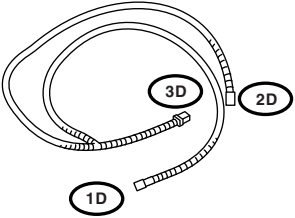
### 1. SPECIAL TOOL

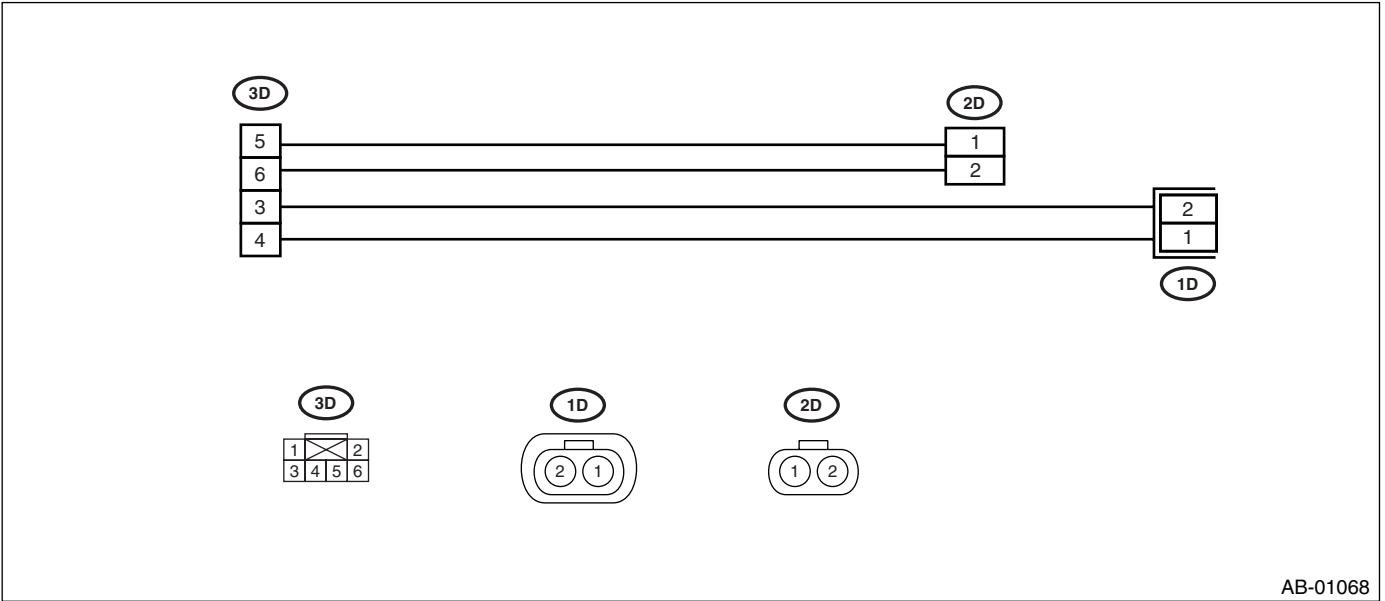
ILLUSTRATION	TOOL NUMBER	DESCRIPTION	REMARKS
 ST24082AA260	24082AA010	CARTRIDGE	Troubleshooting for electrical system.
 ST22771AA030	22771AA030	SUBARU SELECT MONITOR KIT	Troubleshooting for electrical system.

# General Description

## OCCUPANT DETECTION SYSTEM (DIAGNOSTICS)

• TEST HARNESS D

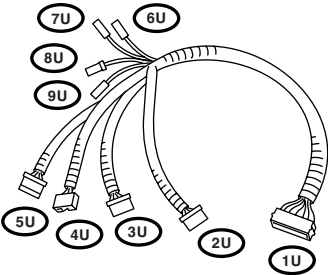
ILLUSTRATION	TOOL NUMBER	DESCRIPTION	REMARKS
 <p>ST98299AG060</p>	98299AG060	TEST HARNESS D	Used when measuring voltage and resistance of the front seat belt buckle switch.



## General Description

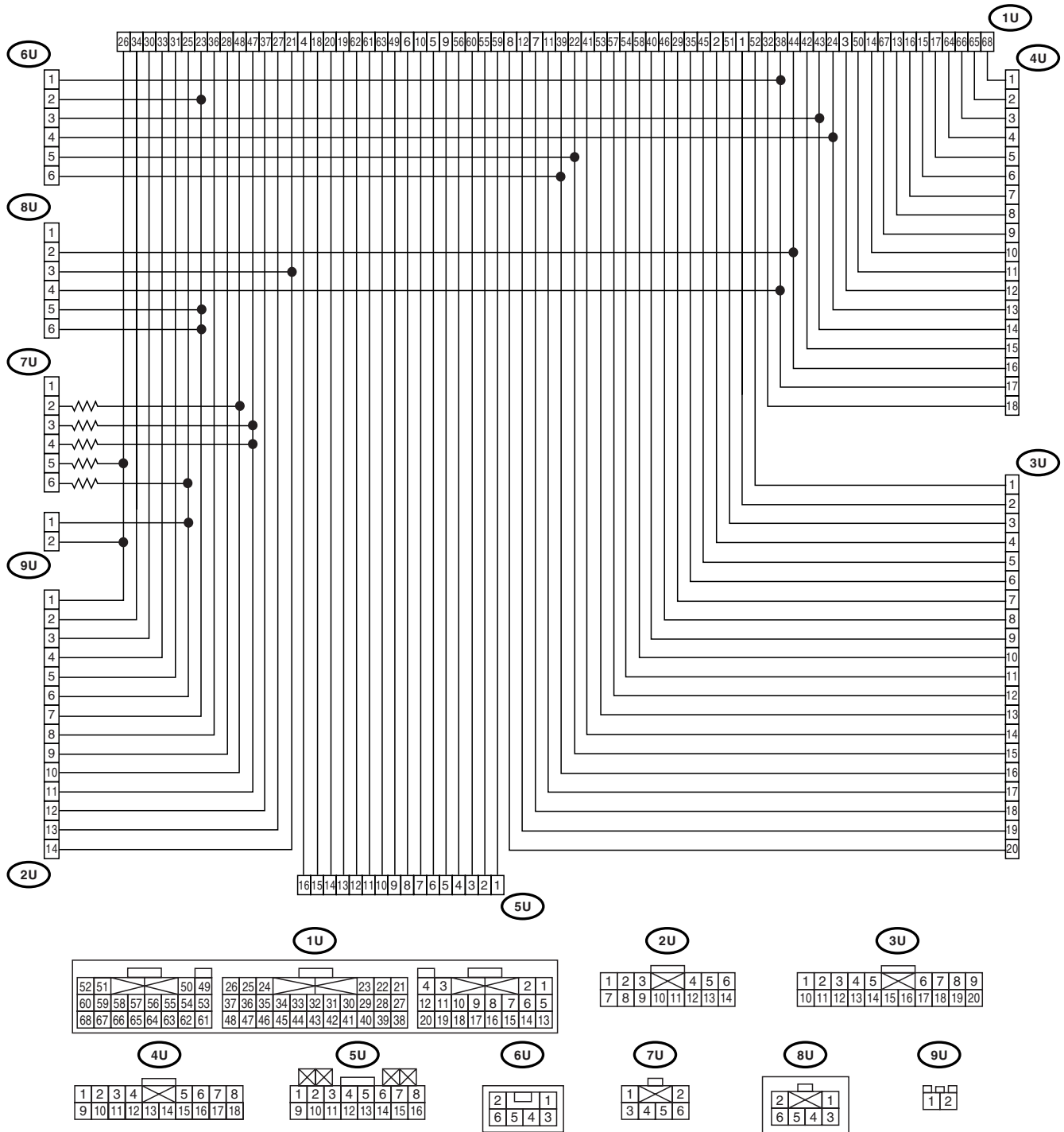
### OCCUPANT DETECTION SYSTEM (DIAGNOSTICS)

- TEST HARNESS U

ILLUSTRATION	TOOL NUMBER	DESCRIPTION	REMARKS
 <p>ST98299AG000</p>	98299AG000	TEST HARNESS U	Used when measuring voltage and resistance of airbag control module.

# General Description

## OCCUPANT DETECTION SYSTEM (DIAGNOSTICS)

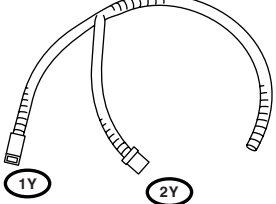


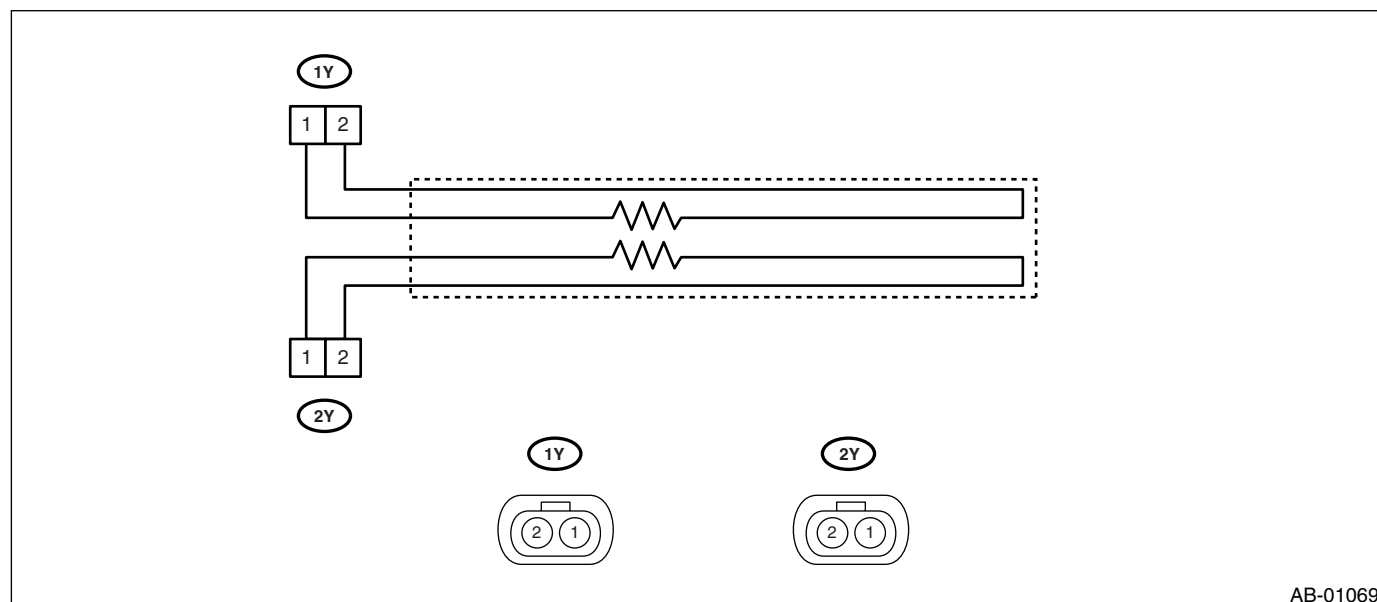
AB-00930

## General Description

## OCCUPANT DETECTION SYSTEM (DIAGNOSTICS)

- TEST HARNESS Y

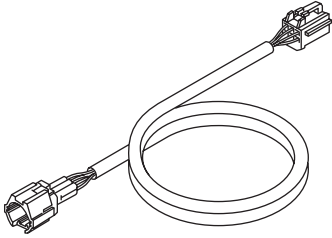
ILLUSTRATION	TOOL NUMBER	DESCRIPTION	REMARKS
 <p>ST98299AG040</p>	28299AG040	TEST HARNESS Y	Used for diagnosing a failure of the seat belt buckle switch.

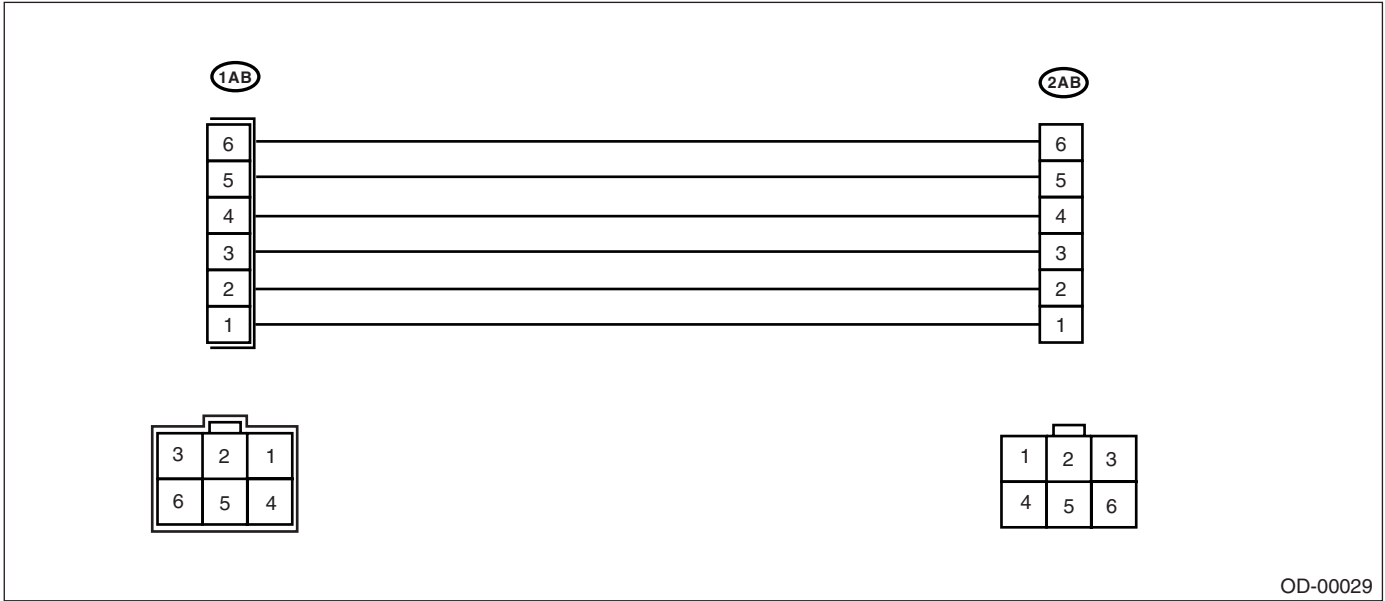


# General Description

## OCCUPANT DETECTION SYSTEM (DIAGNOSTICS)

- TEST HARNESS AB

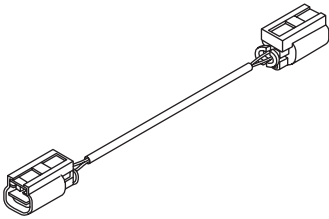
ILLUSTRATION	TOOL NUMBER	DESCRIPTION	REMARKS
 ST98299XA000	98299XA000	TEST HARNESS AB	Used when measuring voltage and resistance of occupant detection system.

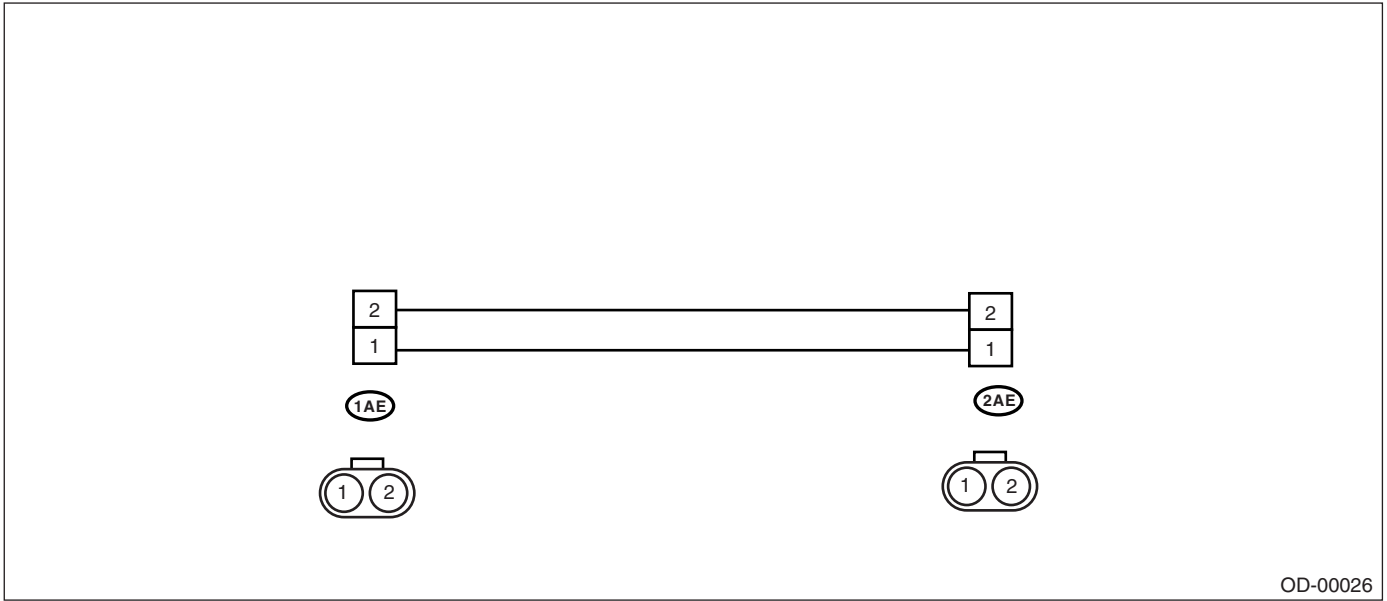


# General Description

## OCCUPANT DETECTION SYSTEM (DIAGNOSTICS)

- TEST HARNESS AE

ILLUSTRATION	TOOL NUMBER	DESCRIPTION	REMARKS
 ST98299XA030	98299XA030	TEST HARNESS AE	TEST HARNESS Y ADAPTER HARNESS Used for diagnosing a failure of the seat belt buckle switch.

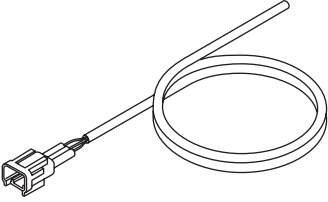


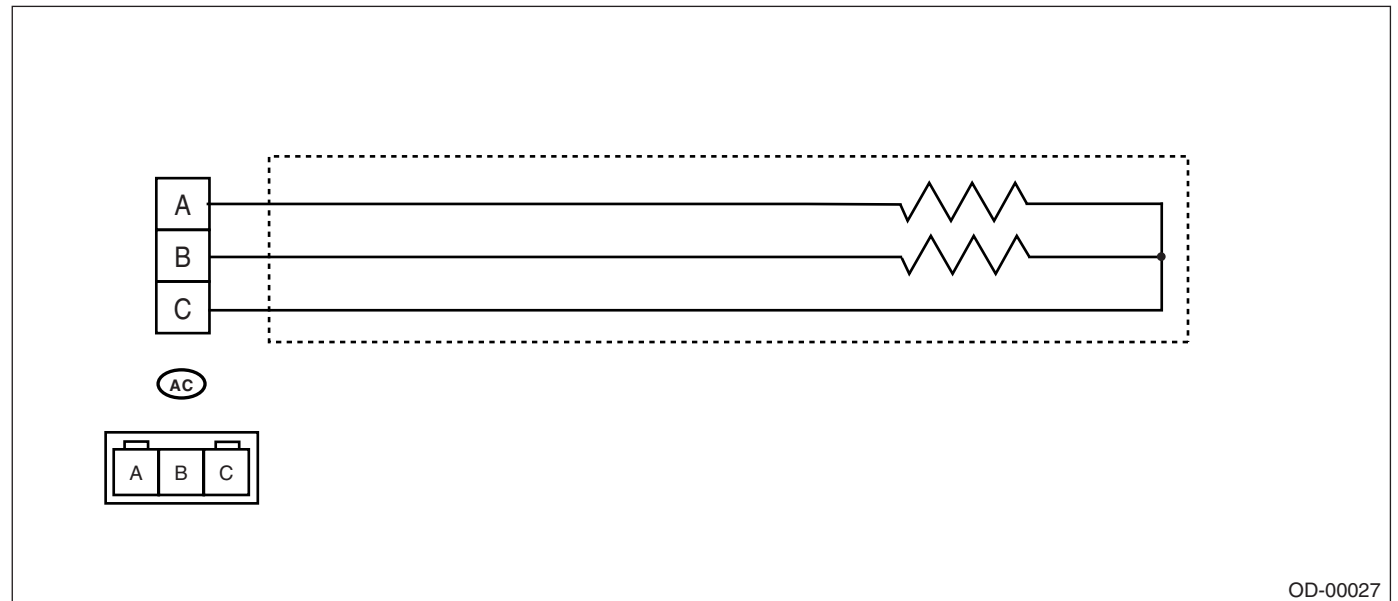


## General Description

### OCCUPANT DETECTION SYSTEM (DIAGNOSTICS)

- TEST HARNESS AC

ILLUSTRATION	TOOL NUMBER	DESCRIPTION	REMARKS
 <p>ST98299XA010</p>	98299XA010	TEST HARNESS AC	Used for diagnosing a failure of the seat belt tension sensor.

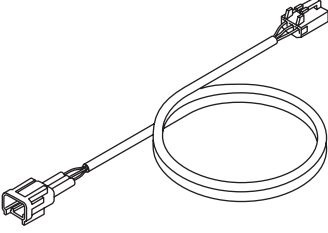


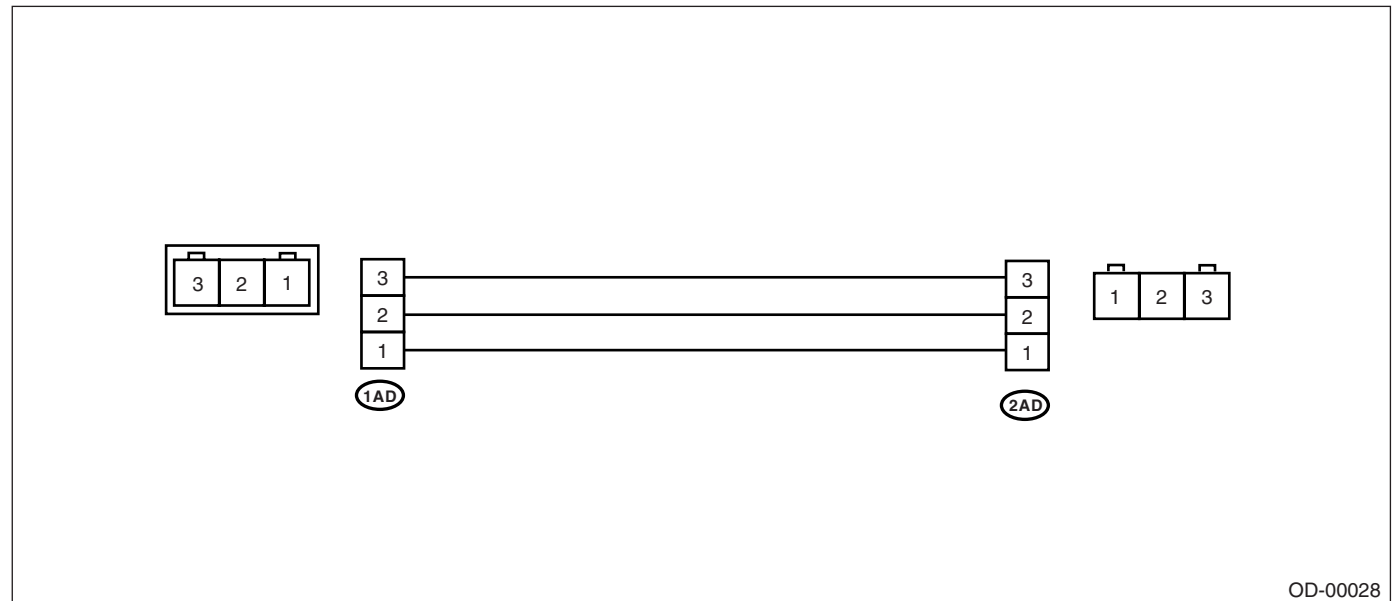
OD-00027

## General Description

### OCCUPANT DETECTION SYSTEM (DIAGNOSTICS)

#### • TEST HARNESS AD

ILLUSTRATION	TOOL NUMBER	DESCRIPTION	REMARKS
 <p>ST98299XA020</p>	98299XA020	TEST HARNESS AD	Used when measuring voltage and resistance of seat belt tension sensor.



#### 2. GENERAL TOOL

TOOL NAME	REMARKS
Circuit tester	Used for measuring resistance, voltage and current.