

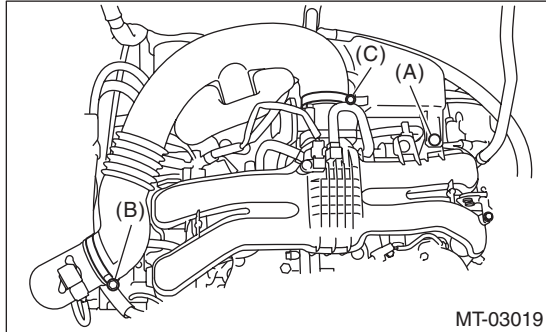
Clutch Pipe and Hose

CLUTCH SYSTEM

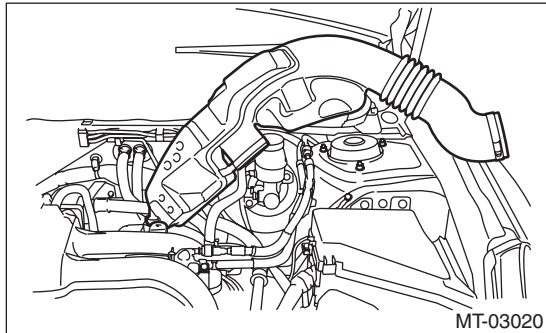
7. Clutch Pipe and Hose

A: REMOVAL

- 1) Disconnect the ground cable from battery.
- 2) Remove the clip (A) from the air intake boot.
- 3) Loosen the clamp (B) connecting the air intake boot and air cleaner case (rear).
- 4) Loosen the clamp (C) which connects the air intake boot and throttle body.



- 5) Remove the air intake boot from the throttle body, and move it to the left side wheel apron.

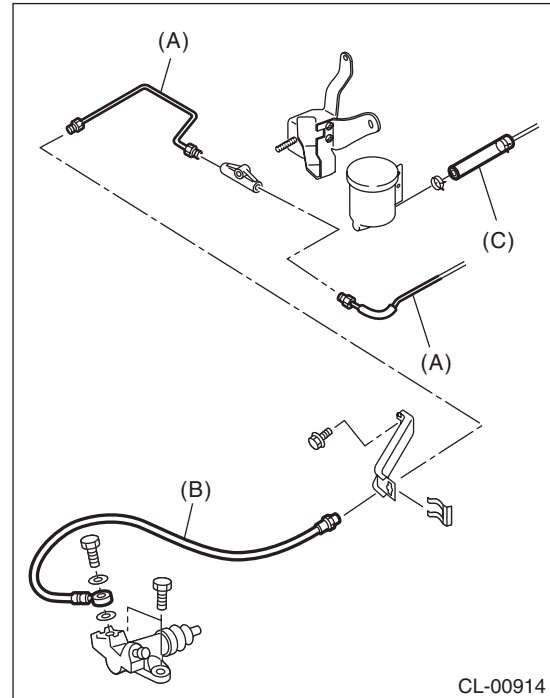


- 6) Thoroughly drain the clutch fluid from the reservoir tank.

- 7) Disconnect the clutch pipe from the clutch hose and connector. Disconnect the reservoir tank hose from the reservoir tank.

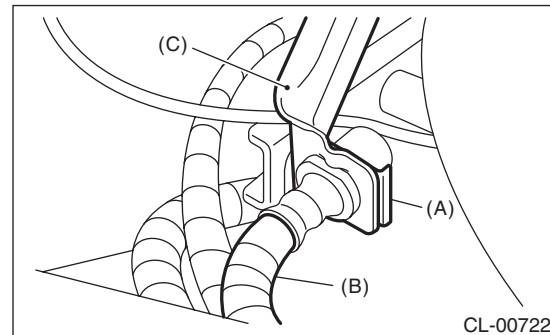
CAUTION:

Be careful not to spill the clutch fluid. Clutch fluid spilled on the vehicle body will harm the paint surface; wash it off with water and wipe clean quickly if spilled.



- (A) Clutch pipe
- (B) Clutch hose
- (C) Reservoir tank hose

- 8) Pull out the clamp, then remove the clutch hose from the clutch bracket.



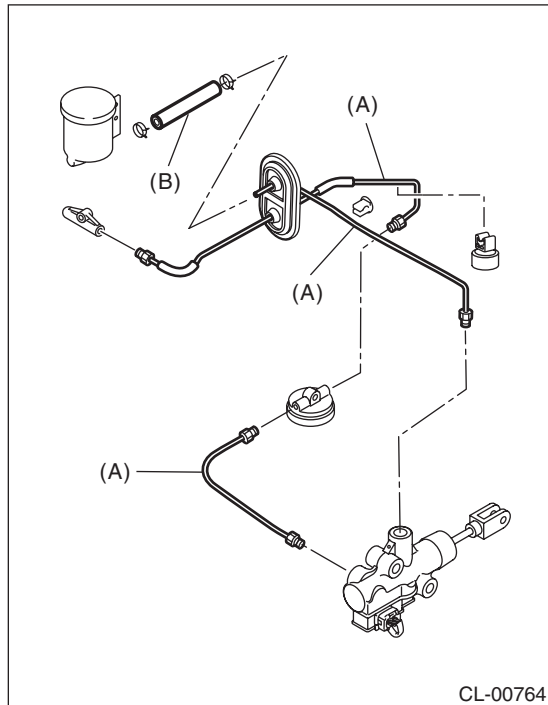
- (A) Clamp
- (B) Clutch hose
- (C) Clutch bracket

- 9) Disconnect the clutch hose from operating cylinder.
- 10) Remove the clutch bracket.

11) Remove the instrument panel lower cover. <Ref. to EI-63, REMOVAL, Instrument Panel Lower Cover.>

12) Remove the pedal assembly. <Ref. to CL-25, REMOVAL, Clutch Pedal.>

13) Remove the clutch pipe from the reservoir tank hose, mass damper, clutch damper, master cylinder and clutch pipe grommet.



- (A) Clutch pipe
- (B) Reservoir tank hose

B: INSTALLATION

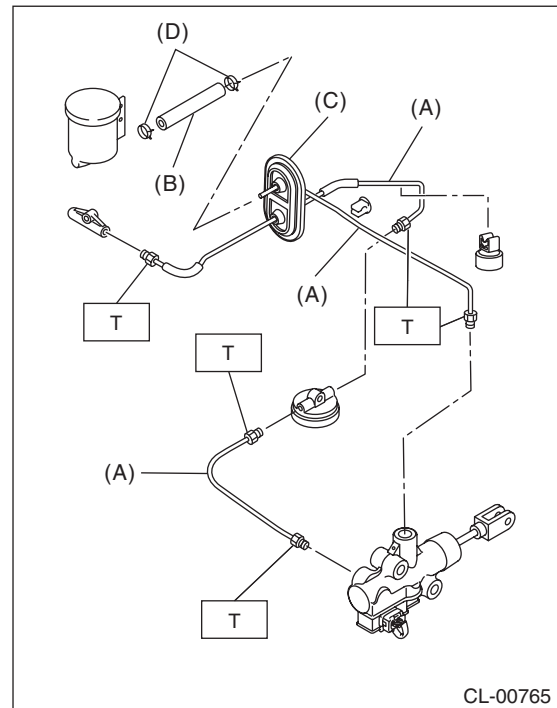
Install in the reverse order of removal.

NOTE:

After bleeding air from the clutch fluid, ensure that the clutch operates properly. <Ref. to CL-24, Clutch Fluid Air Bleeding.>

Tightening torque:

T: 15 N·m (1.5 kgf-m, 11.1 ft-lb)



- (A) Clutch pipe
- (B) Reservoir tank hose
- (C) Clutch pipe grommet
- (D) Clamp

Clutch Pipe and Hose

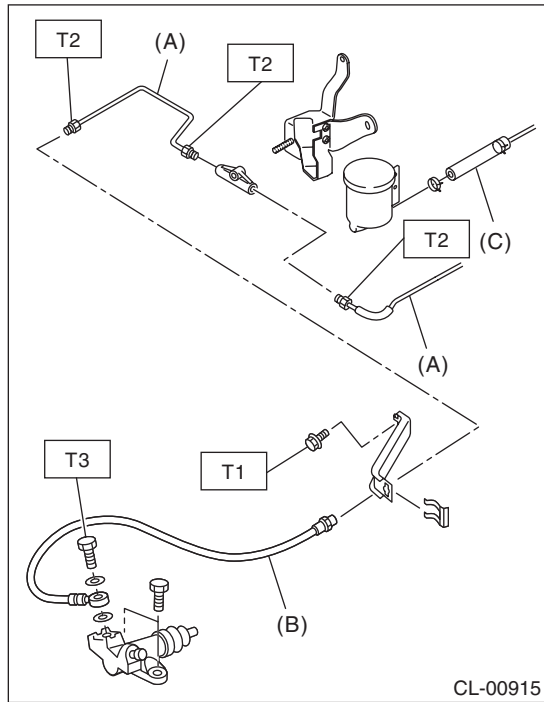
CLUTCH SYSTEM

Tightening torque:

T1: 7.5 N·m (0.8 kgf-m, 5.5 ft-lb)

T2: 15 N·m (1.5 kgf-m, 11.1 ft-lb)

T3: 18 N·m (1.8 kgf-m, 13.3 ft-lb)



- (A) Clutch pipe
- (B) Clutch hose
- (C) Reservoir tank hose

C: INSPECTION

Check the clutch pipe, reservoir tank hose and clutch hose for crack, breaks or damage. Check the joint for clutch fluid leakage. If crack, breakage, damage or leakage is found, repair or replace the faulty clutch pipe, reservoir tank hose or clutch hose.