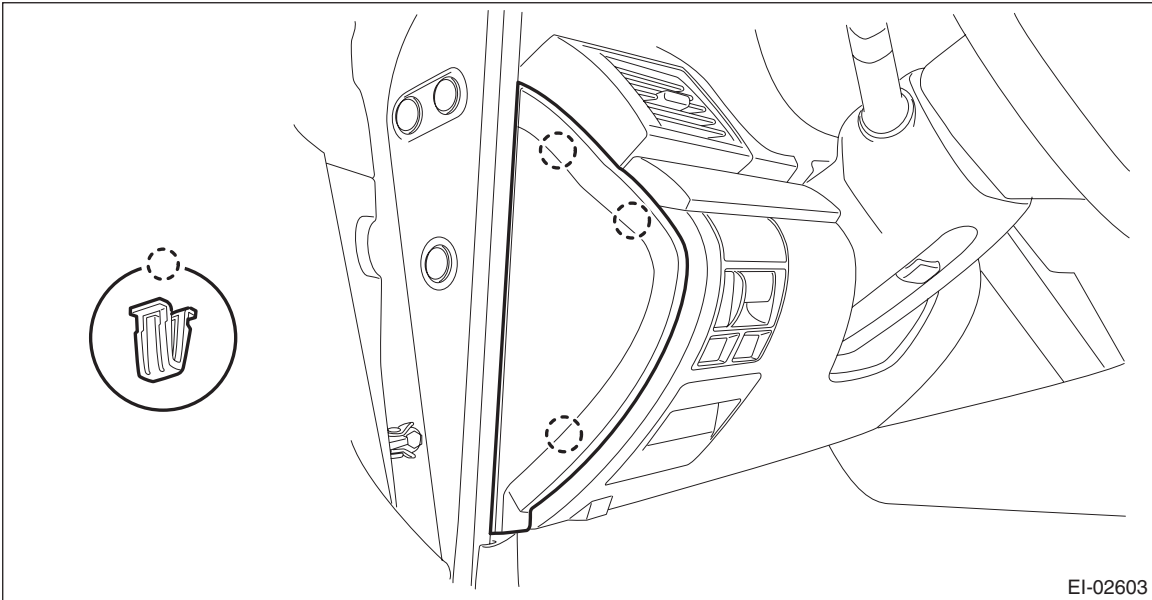


14.Brake Pedal

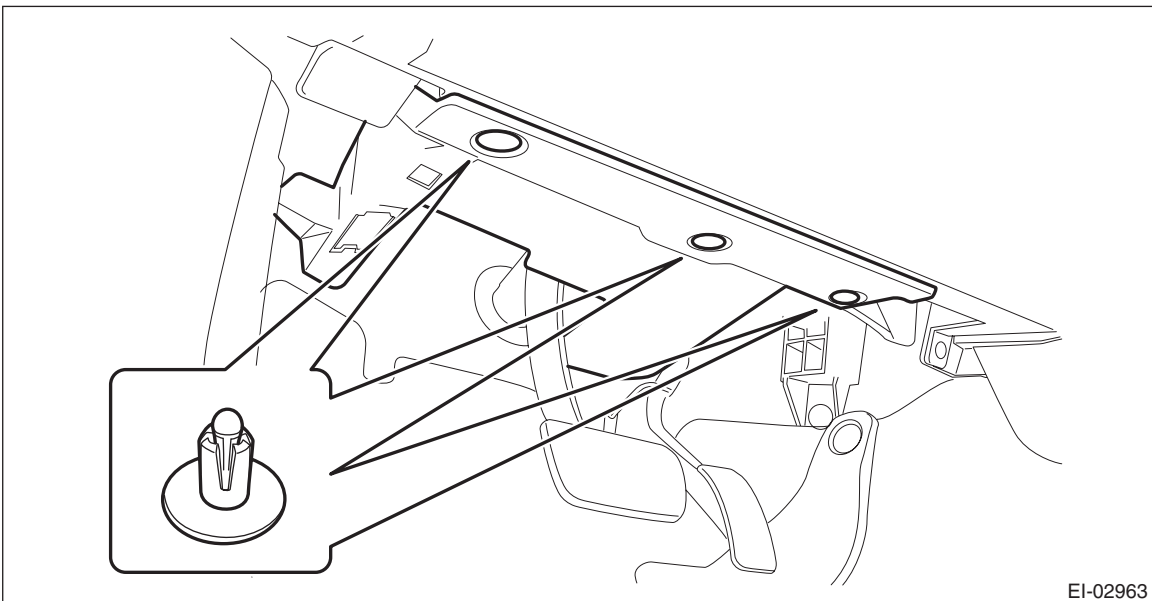
A: REMOVAL

1. AT MODELS AND CVT MODELS

- 1) Disconnect the ground cable from battery.
- 2) Remove the instrument panel lower cover.
 - (1) Remove the clips, and remove the instrument panel side cover LH.



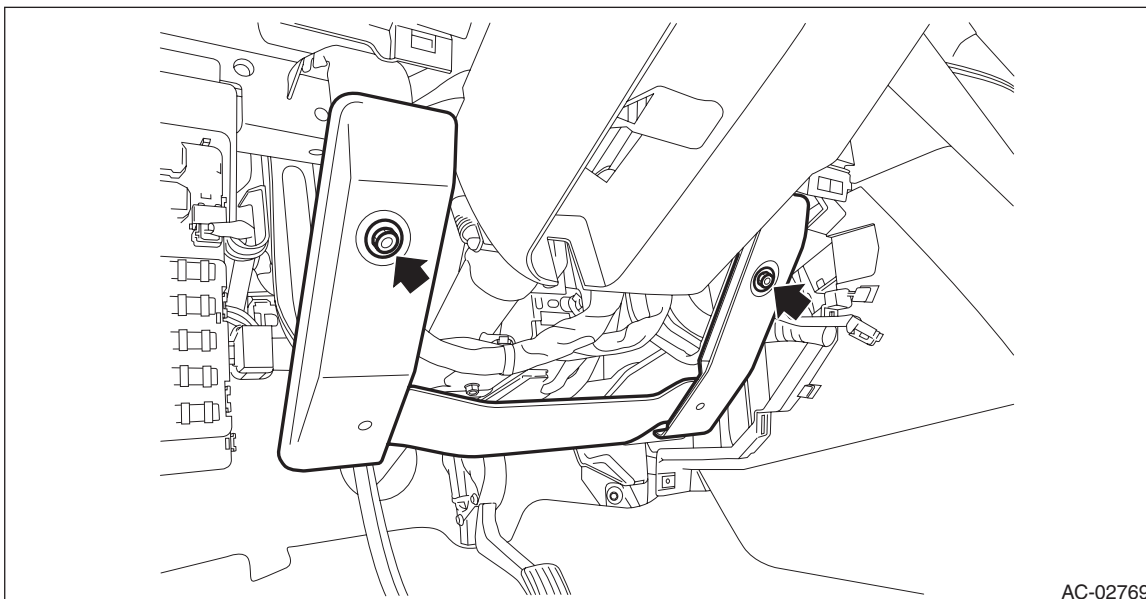
- (2) Remove the clips and data link connector, and remove the instrument panel lower cover under.



Brake Pedal

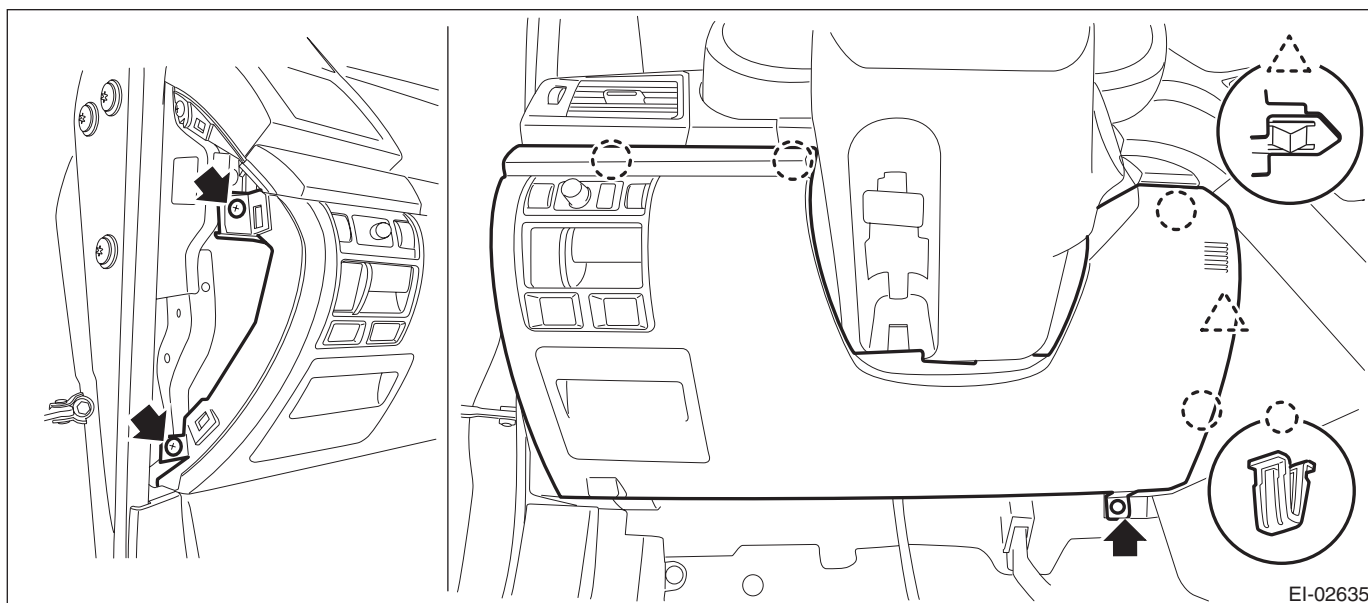
BRAKE

- (3) Remove the bolts, and remove the knee guard panel.



AC-02769

- (4) Remove the screws and clips and release the claws, and remove the instrument panel lower cover while disconnecting the harness connectors.



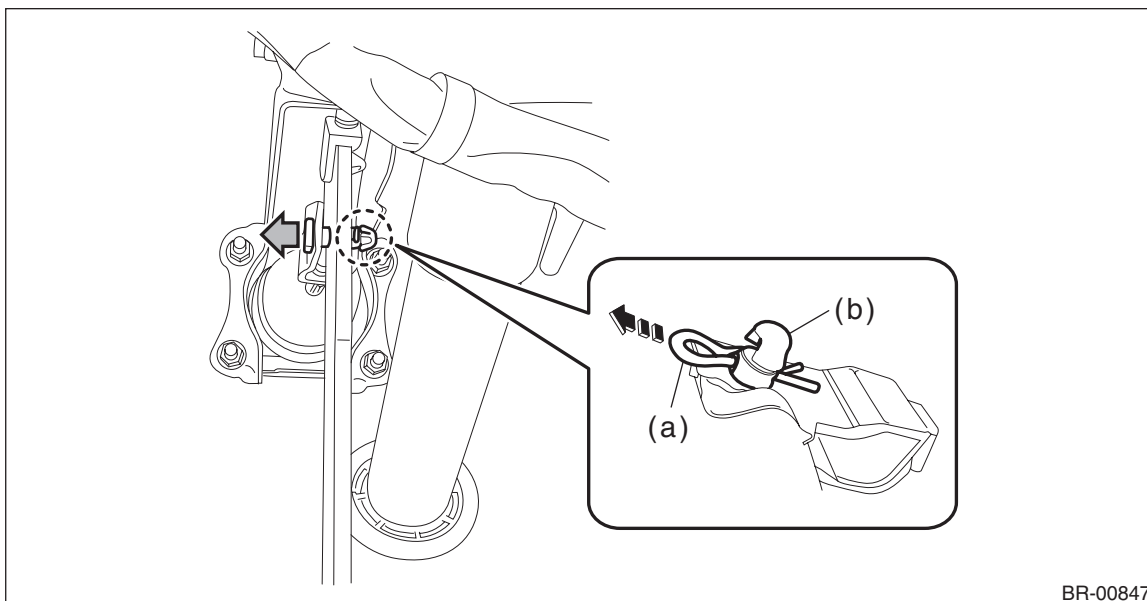
EI-02635

- 3) Remove the brake pedal assembly.

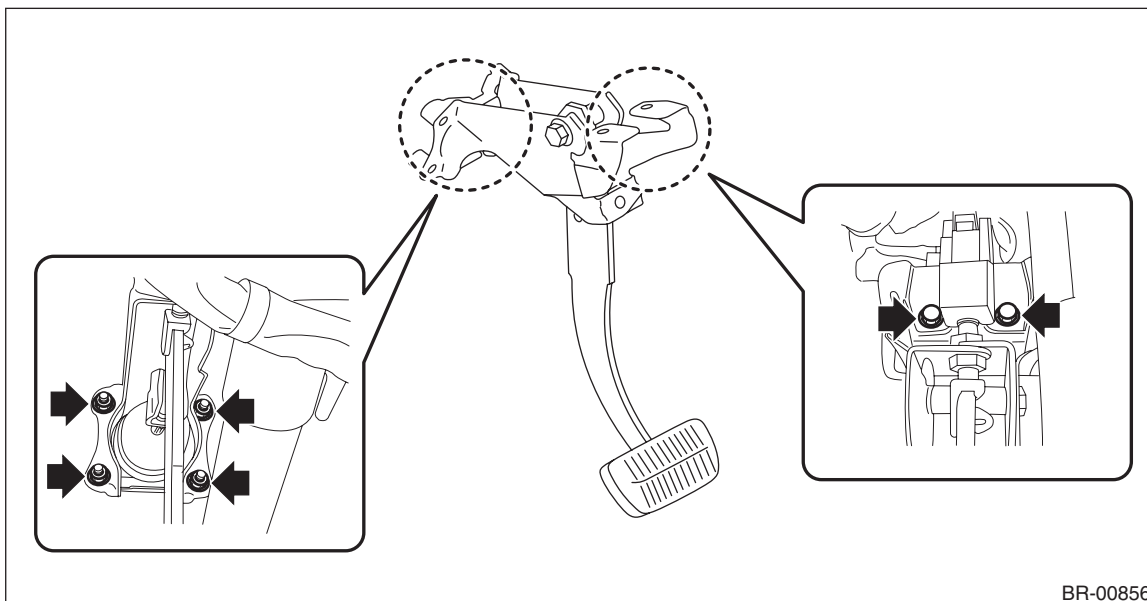
- (1) Disconnect the stop light switch connector.
- (2) Remove the snap pin (a) and clevis pin (b), and remove the operating rod from the brake pedal.

NOTE:

- Use special care when handling the operating rod. If excessive force is applied to the operating rod, the angle may change by $\pm 3^\circ$, and it may result in damage to power piston cylinder.
- Do not change the push rod length.



(3) Remove the bolt and nut, and then detach the brake pedal assembly.



2. MT MODEL

NOTE:

Brake pedal is integrated with the clutch pedal.

For removal procedures of the brake pedal, refer to Clutch section. <Ref. to CL-24, REMOVAL, Clutch Pedal.>

B: INSTALLATION

1) Install each part in the reverse order of removal.

CAUTION:

- Apply grease to the snap pin to prevent the operating rod from wear.
- Replace the clevis pin with new parts, and apply thin coat of NIGTIGHT LYW No. 2 grease to the clevis pin.

Tightening torque:

Brake pedal: 18 N·m (1.84 kgf-m, 13.3 ft-lb)

2) Check that the brake light operate properly.

3) Check the brake pedal after installation. <Ref. to BR-62, INSPECTION, Brake Pedal.>

C: INSPECTION

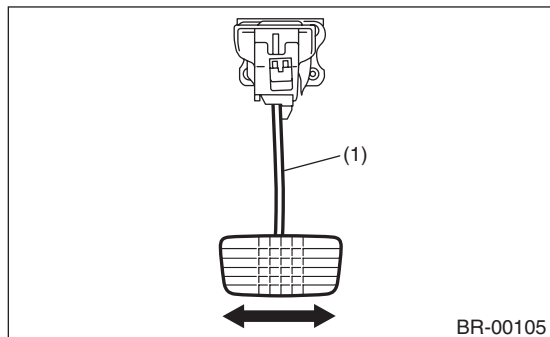
1) Move the brake pedal pads in a horizontal direction with a force of approx. 10 N (1 kgf, 2 lbf), and check that the pedal deflection is in the range of specifications.

CAUTION:

If excessive deflection is noted, replace with a new bushing.

Deflection of brake pedal:

Wear limit: 5.0 mm (0.197 in) or less



(1) Brake pedal

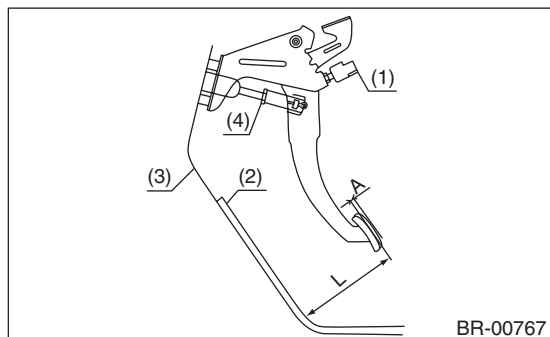
2) Check the position of the pedal pad.

Pedal height L:

140 — 150 mm (5.51 — 5.91 in)

Brake pedal free play A:

0.2 — 0.5 mm (0.008 — 0.02 in) [When pulling the brake pedal upward with a force of less than 10 N (1 kgf, 2 lbf).]



- (1) Stop light switch
- (2) Mat
- (3) Toe board
- (4) Brake booster operating rod

3) If it is not within the specification, loosen the lock nuts of brake booster operating rod, and rotate the rod to adjust the pedal height L within the specification.

4) Tighten the lock nut.

Tightening torque:

Operating lock nut: 22 N·m (2.24 kgf-m, 16.2 ft-lb)