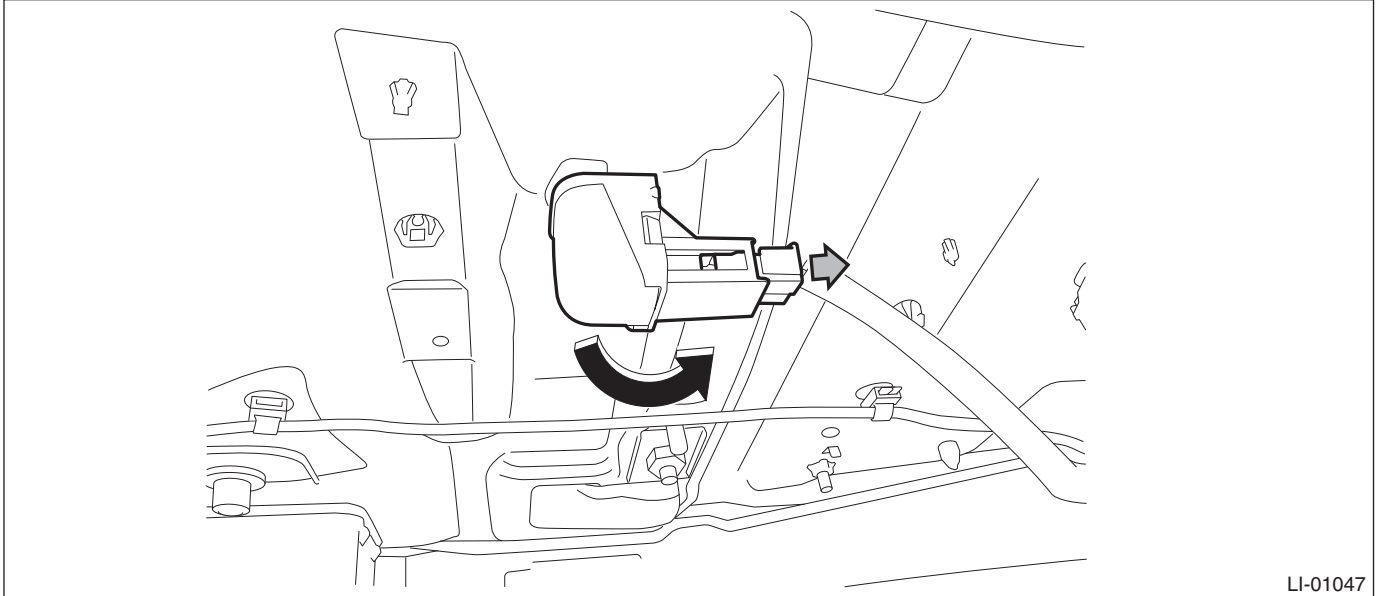


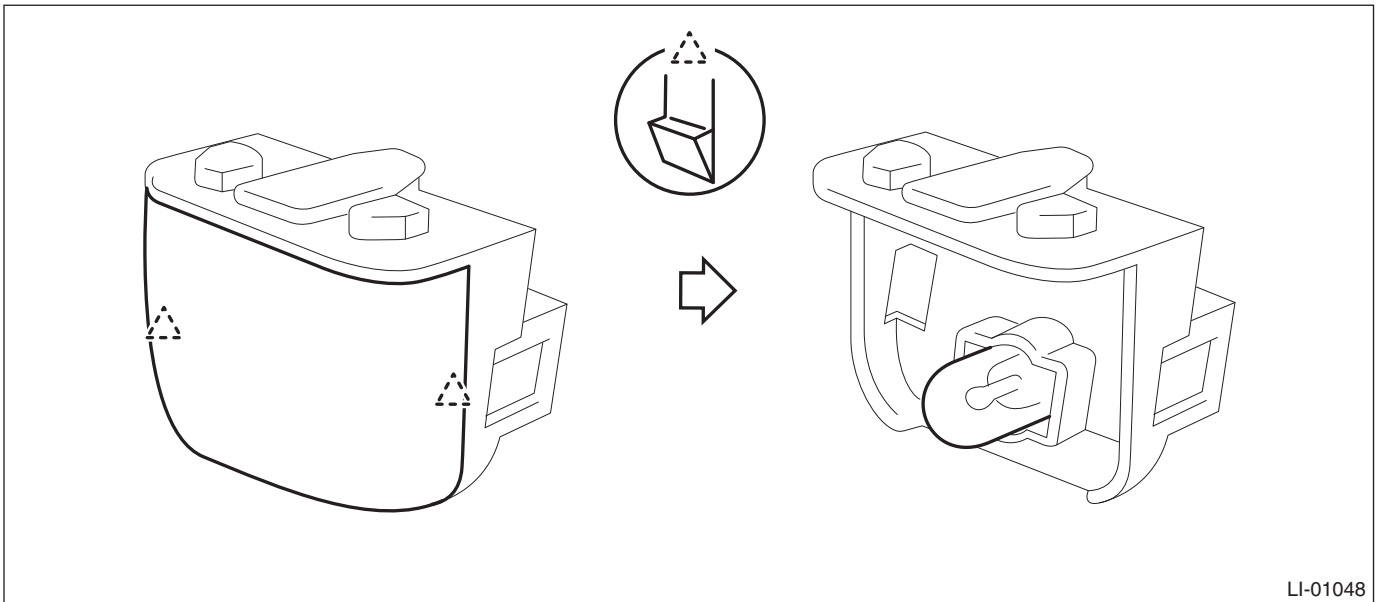
## 31.Trunk Room Light

### A: REMOVAL

- 1) Disconnect the ground cable from battery.
- 2) Remove the trunk room light
  - (1) Disconnect the connector.
  - (2) Turn the trunk room light counterclockwise to 60° and remove the light.



- 3) Release the claws, and detach the trunk room light cover and bulb.



### B: INSTALLATION

Install each part in the reverse order of removal.

### C: INSPECTION

- 1) Visually check the bulb for blow out.
- 2) Check the bulb specification. <Ref. to LI-2, SPECIFICATION, General Description.>
- 3) If NG, replace the bulb with a new part.