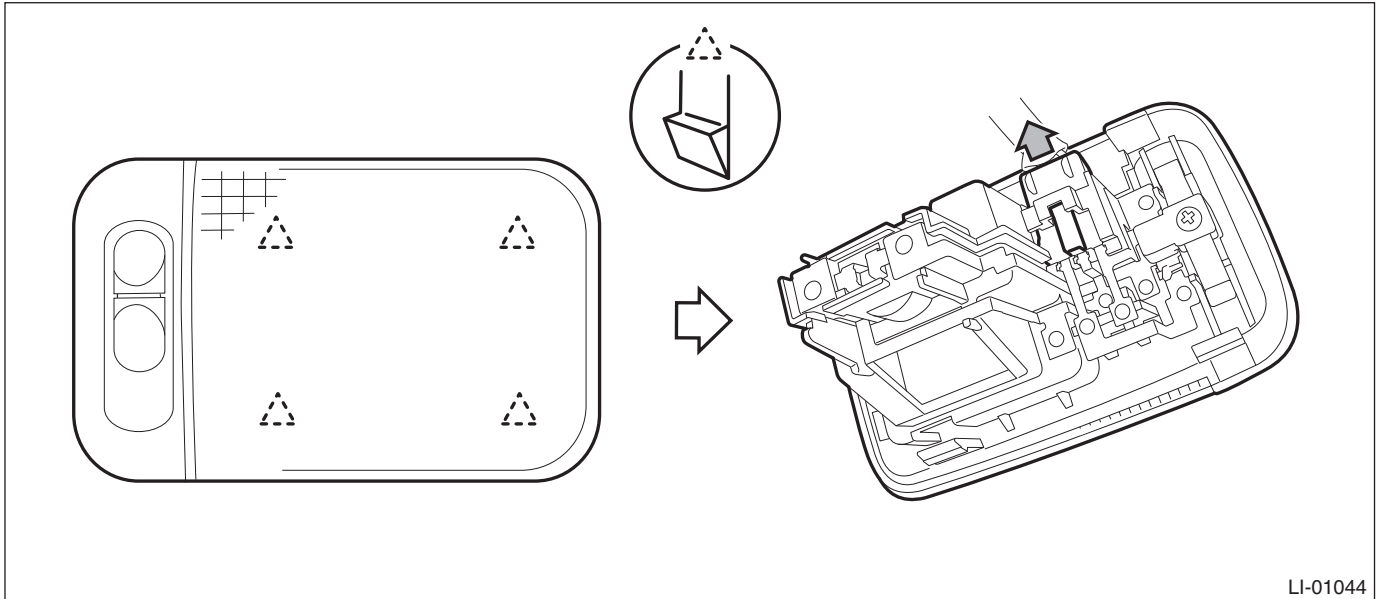


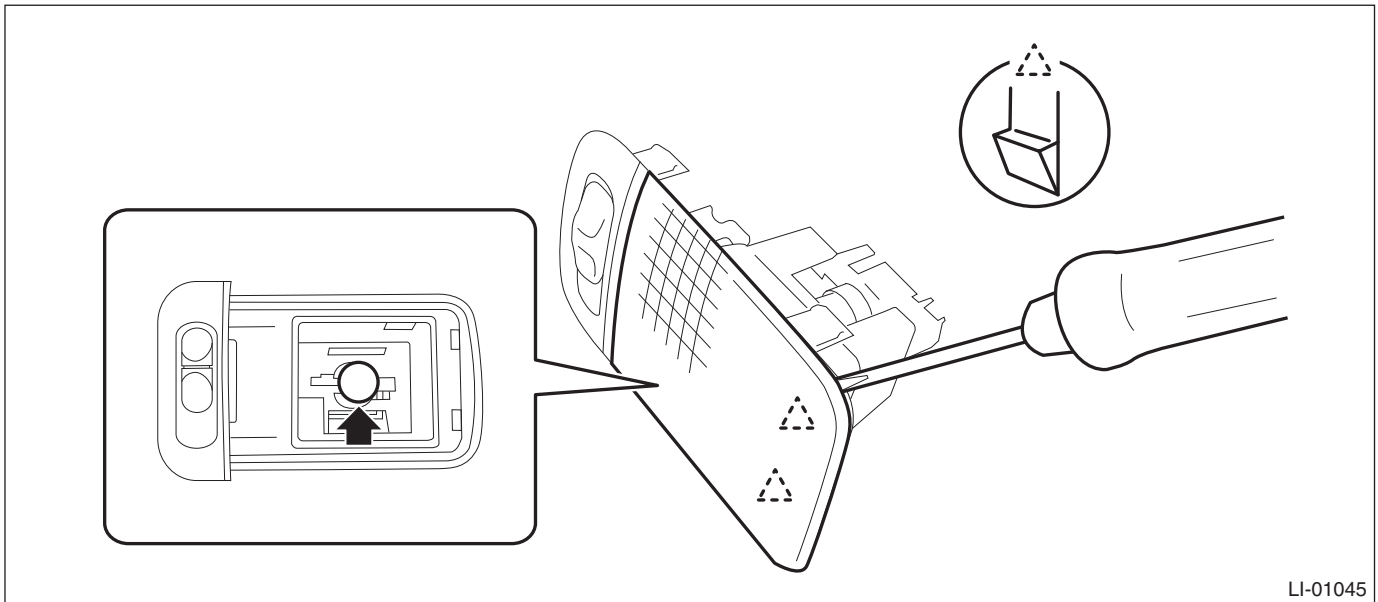
30.Luggage Room Light

A: REMOVAL

- 1) Disconnect the ground cable from battery.
- 2) Remove the luggage room light.
 - (1) Release the claws and remove the luggage room light main body.
 - (2) Disconnect the connector and remove the luggage room light.



- 3) Release the claws, and detach the luggage room light cover and bulb.



B: INSTALLATION

Install each part in the reverse order of removal.

C: INSPECTION

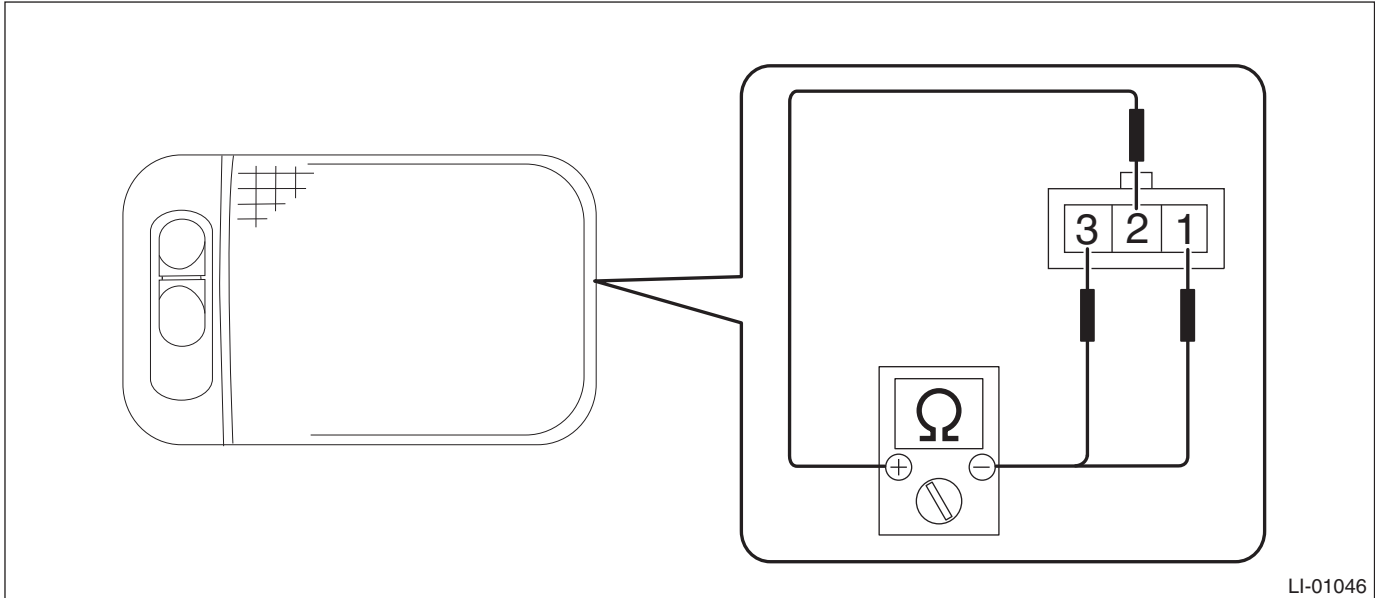
1. LUGGAGE ROOM LIGHT BULB

- 1) Visually check the bulb for blow out.
- 2) Check the bulb specification. <Ref. to LI-2, SPECIFICATION, General Description.>
- 3) If NG, replace the bulb with a new part.

2. LUGGAGE ROOM LIGHT SWITCH

- 1) Remove the luggage room light.
- 2) Measure the resistance between luggage room light switch terminals.

Preparation tool: Circuit tester



Terminal No.	Inspection Conditions	Specification
—	Switch OFF	1 MΩ or more
1 — 2	Switch ON	Less than 1 Ω
2 — 3	Switch door	Less than 1 Ω

- 3) Replace the luggage room light if the inspection result is not within the standard value.