

10.Side Airbag Sensor

A: REMOVAL

1) Move the seat all the way forward, from which the airbag sensor is to be removed.

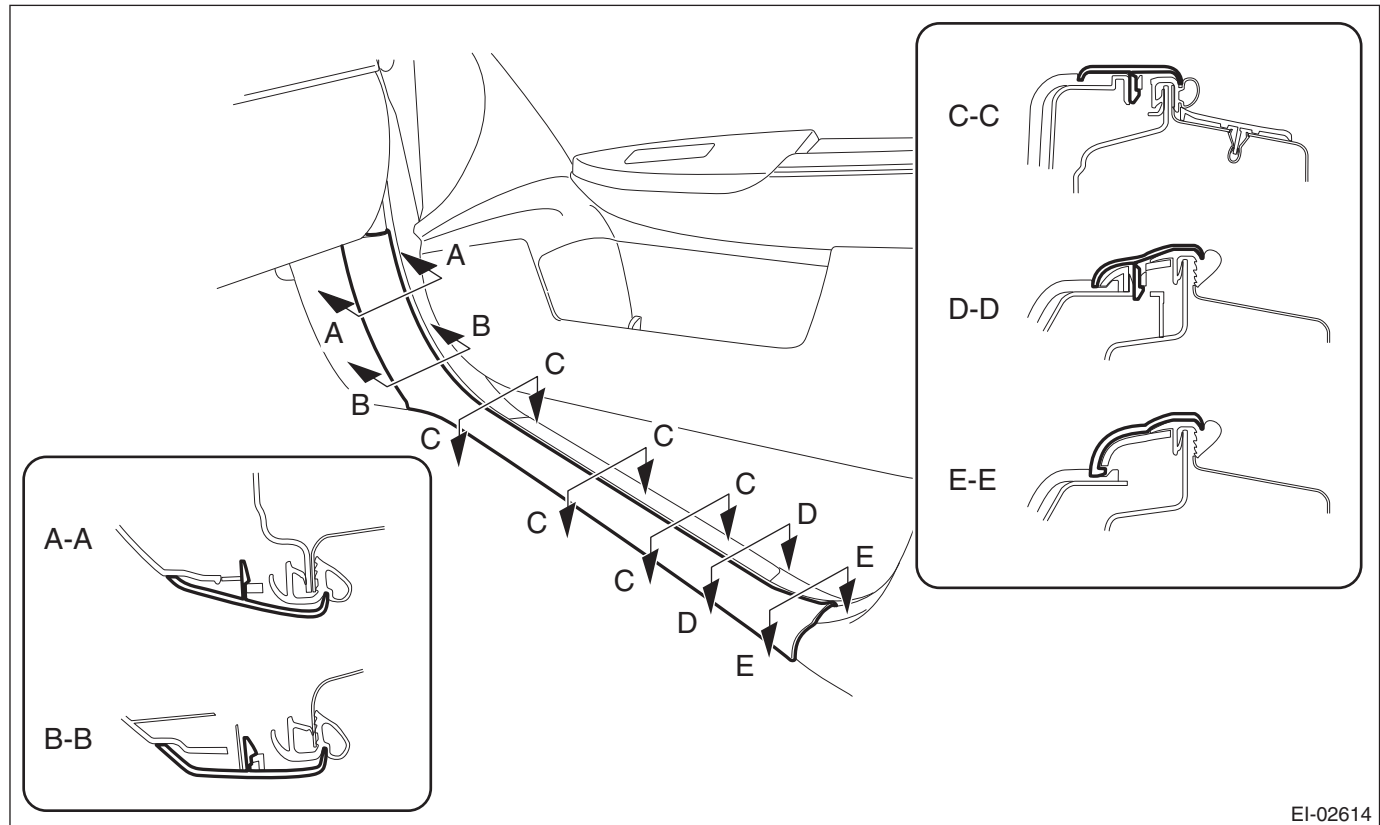
NOTE:

To remove the seat belt retractor assembly,

2) Turn the ignition switch to OFF.

3) Disconnect the ground cable from battery and wait for at least 60 seconds before starting work.

4) Release the claws, and then remove the side sill cover-front INN. (On the side where airbag sensor is removed)



EI-02614

CAUTION:

Do not pull with excessive force. Doing so may damage the claws of the side sill cover INN.

NOTE:

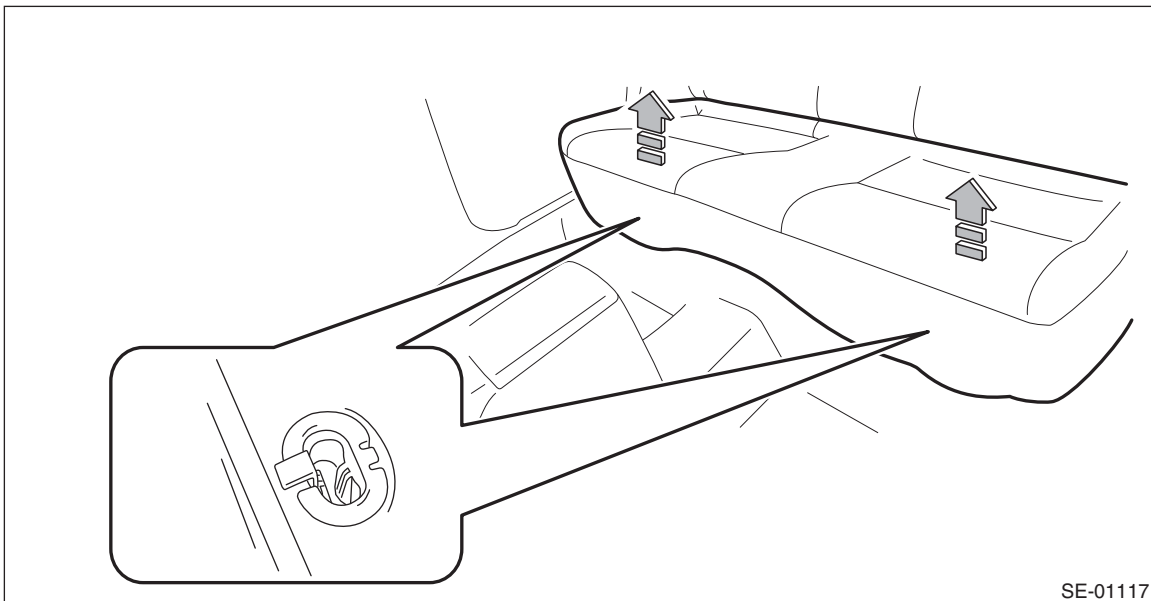
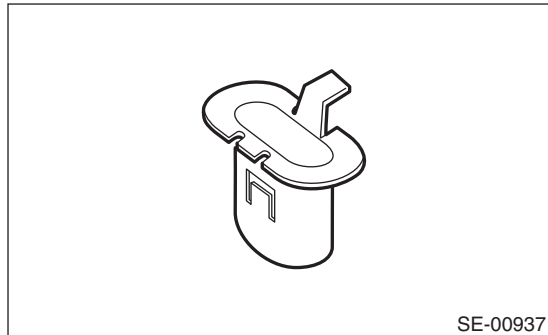
To release the claws of the side sill cover INN, the following steps are recommended.

1. Take out the weather strip from under the side sill cover INN.
2. Turn over the floor mat and release the claw (C) by accessing from behind the side sill cover INN.

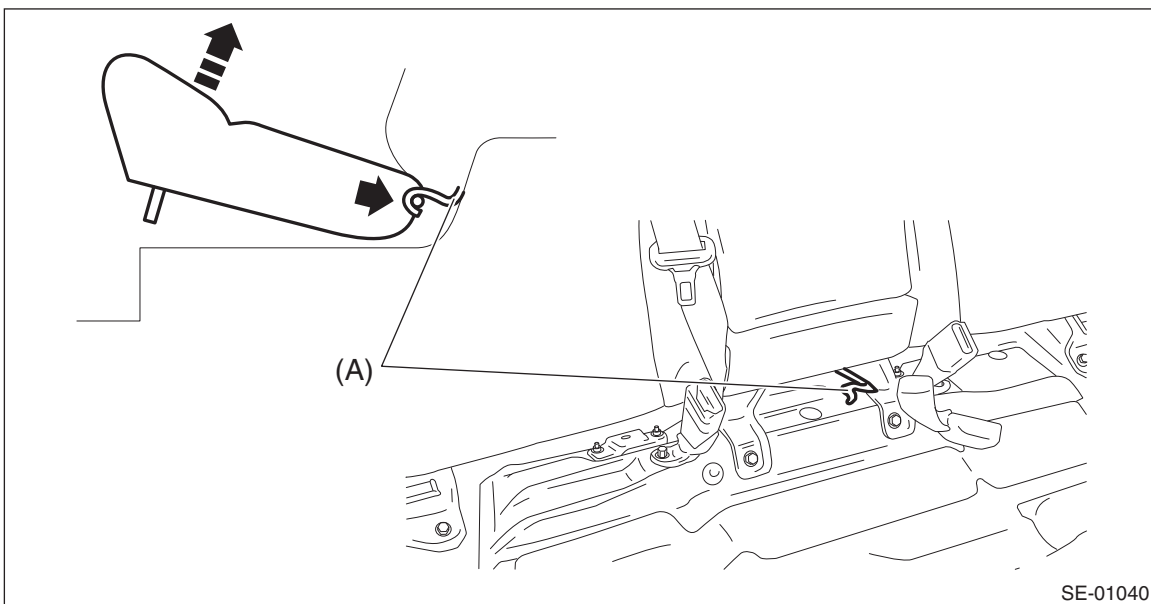
- 5) Remove the rear seat cushion assembly.
 - (1) Pull up the seat cushion and release the hook.

CAUTION:

If the hook is removed from vehicle body, replace the hook with the new part to avoid the deterioration of seat securing.



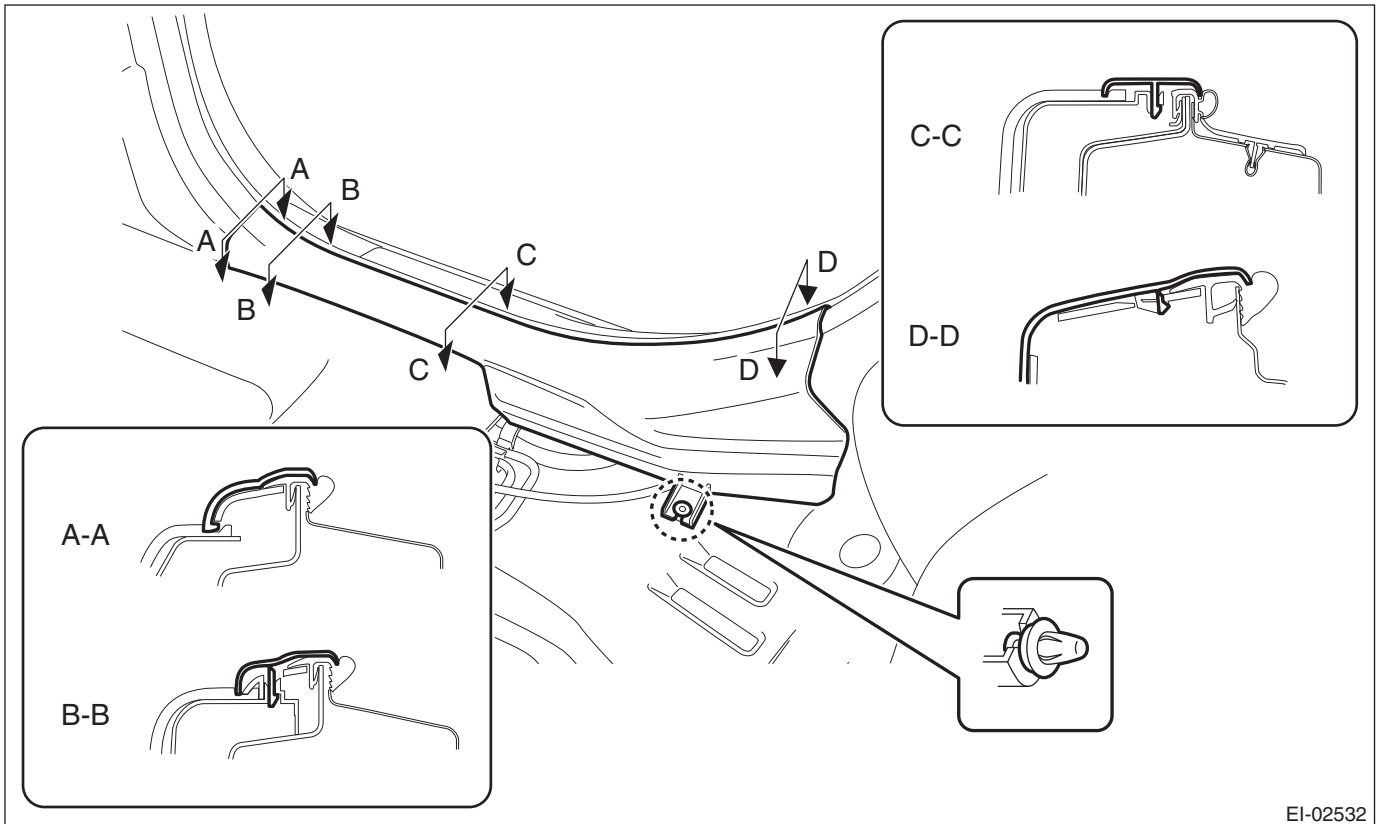
- (2) Remove the hook (A) by pushing it back while lifting the front side of the seat cushion, and remove the seat cushion assembly.



Side Airbag Sensor

AIRBAG SYSTEM

6) Release the clips and claws, and then remove the side sill cover - rear INN. (On the side where airbag sensor is removed)



EI-02532

CAUTION:

Do not pull with excessive force. Doing so may damage the claws of the side sill cover INN.

NOTE:

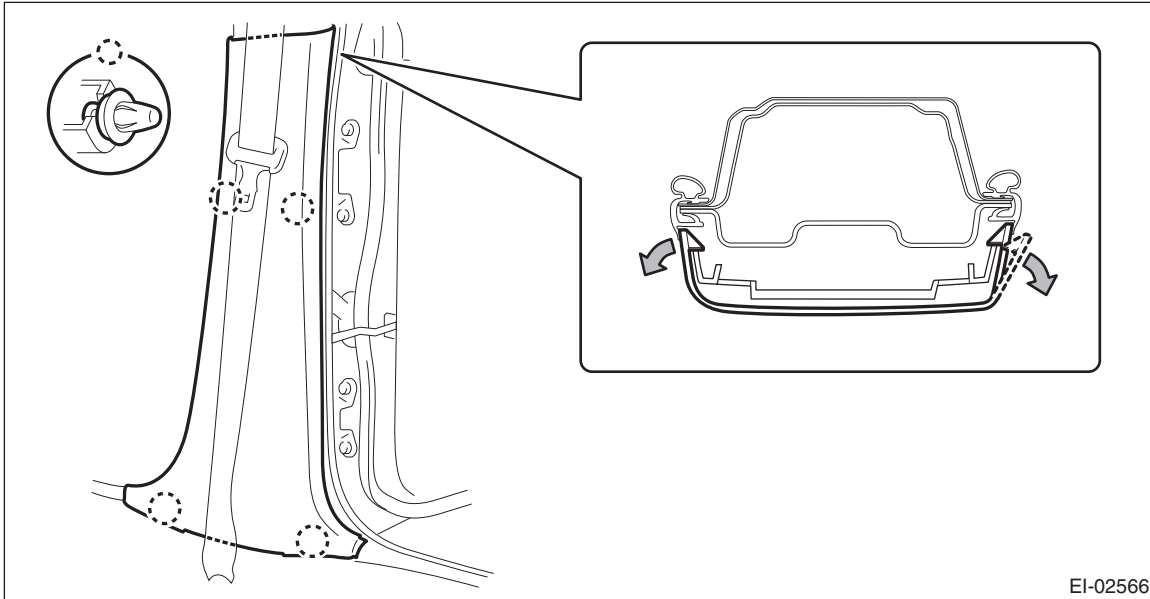
To release the claws of the side sill cover INN, the following steps are recommended.

1. Take out the weather strip from under the side sill cover INN.
2. Turn over the floor mat and release the claws (C) and (D) by accessing from behind the side sill cover INN.

- 7) Remove the center pillar trim LWR. (On the side where airbag sensor is removed)
 - (1) Release the clip by pulling the center pillar trim LWR toward you.
 - (2) Expand the claws of center pillar trim LWR outward and remove it from the center pillar trim UPR.

CAUTION:

Do not expand the center pillar trim LWR excessively. Doing so may damage the trim.

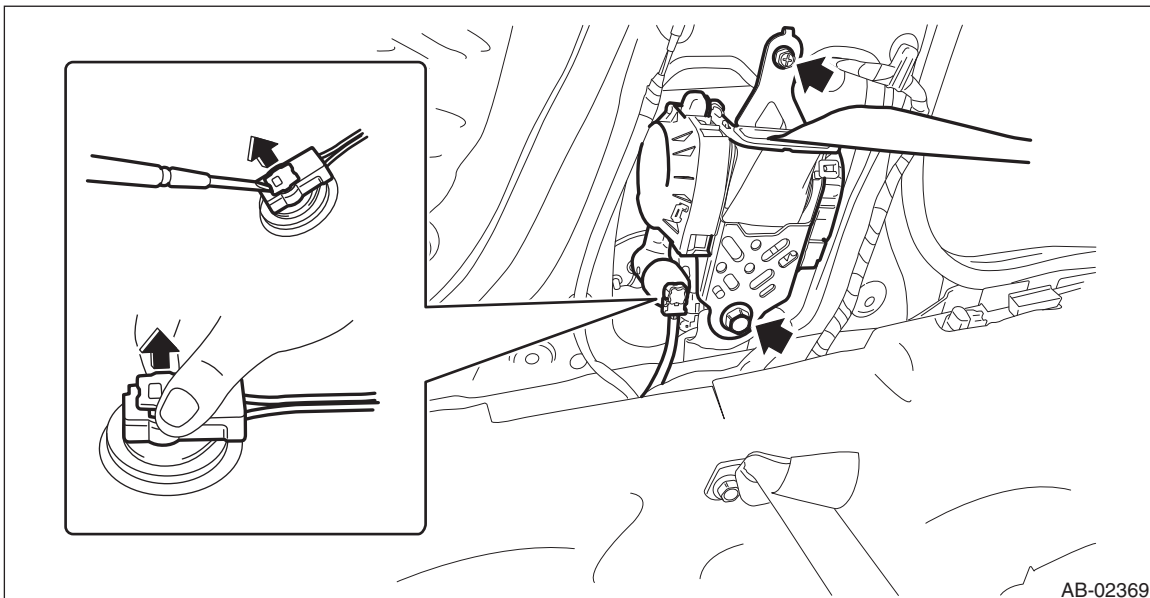


EI-02566

NOTE:

First release the claw located to the rear of the vehicle.

- 8) Remove the seat belt retractor. (On the side where airbag sensor is removed)
 - (1) Turn over the floor mat to disconnect the belt tension sensor connector.
 - (2) Remove the bolt to remove the seat belt retractor.



AB-02369

- 9) Remove the side airbag sensor assembly.

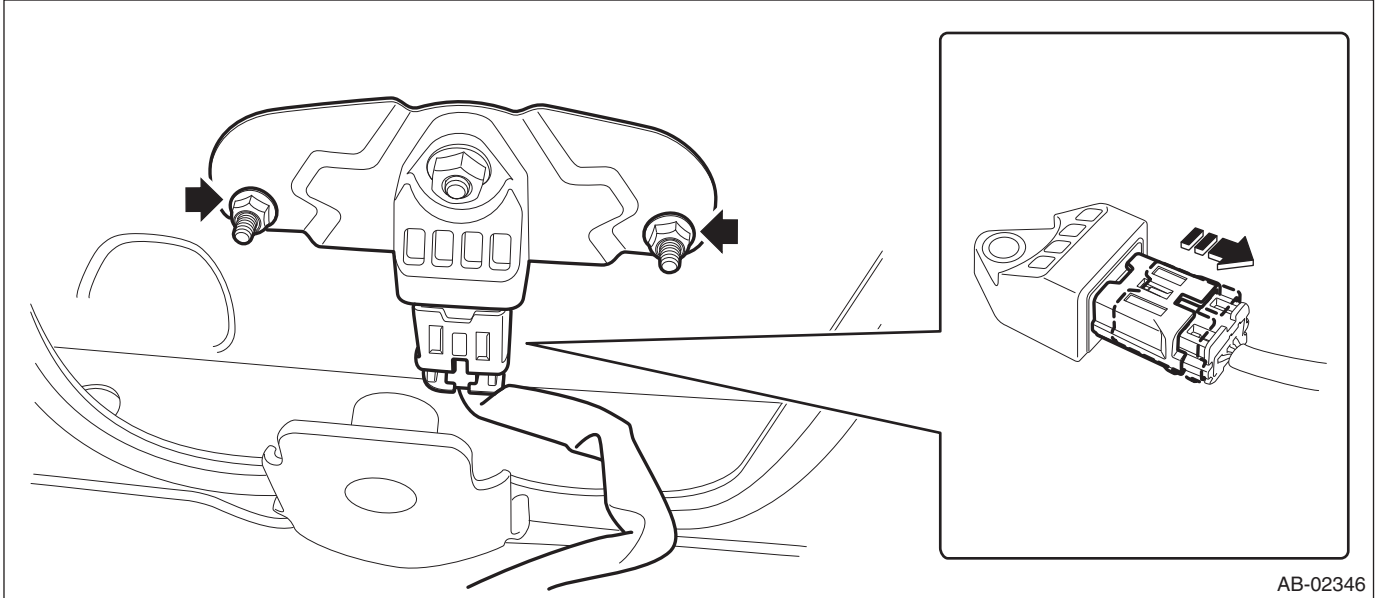
CAUTION:

- Do not separate the side airbag sensor and bracket. It causes the airbag system malfunction.
 - Always replace the new parts when removed the sensors from the bracket.
- (1) Remove the nuts.

Side Airbag Sensor

AIRBAG SYSTEM

(2) Disconnect the airbag connector and remove the side airbag sensor assembly.



B: INSTALLATION

CAUTION:

Do not reuse the bolt and nut.

Always use new bolts and nuts for them.

1) Before installation, inspect the following items and replace any faulty part with a new one.

- The side airbag sensor, sensor bracket, or connector are damaged.
- Side airbag is deployed.

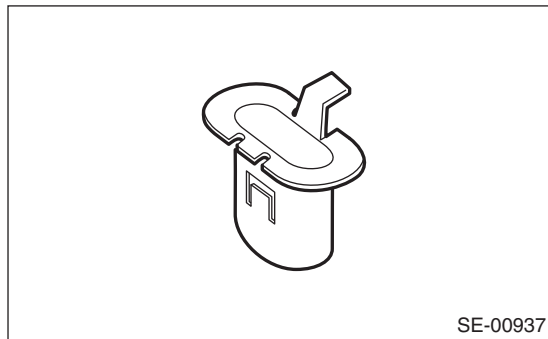
Tightening torque:

Side airbag sensor: 7.5 N·m (0.76 kgf-m, 5.5 ft-lb)

2) Install each part in the reverse order of removal.

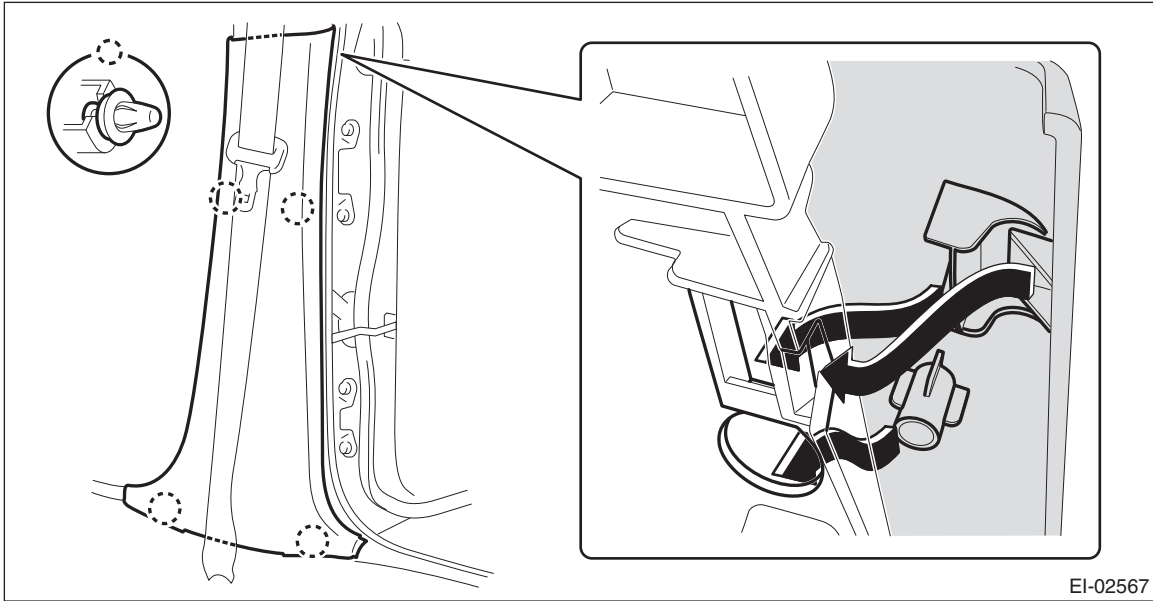
CAUTION:

If the hook is removed from vehicle body, replace the hook with the new part to avoid the deterioration of seat securing.



NOTE:

Assemble the center pillar trim LWR to the center pillar trim UPR securely.



Tightening torque:

Front seat belt: <Ref. to SB-2, FRONT SEAT BELT, COMPONENT, General Description.>