

General Description

VEHICLE DYNAMICS CONTROL (VDC)

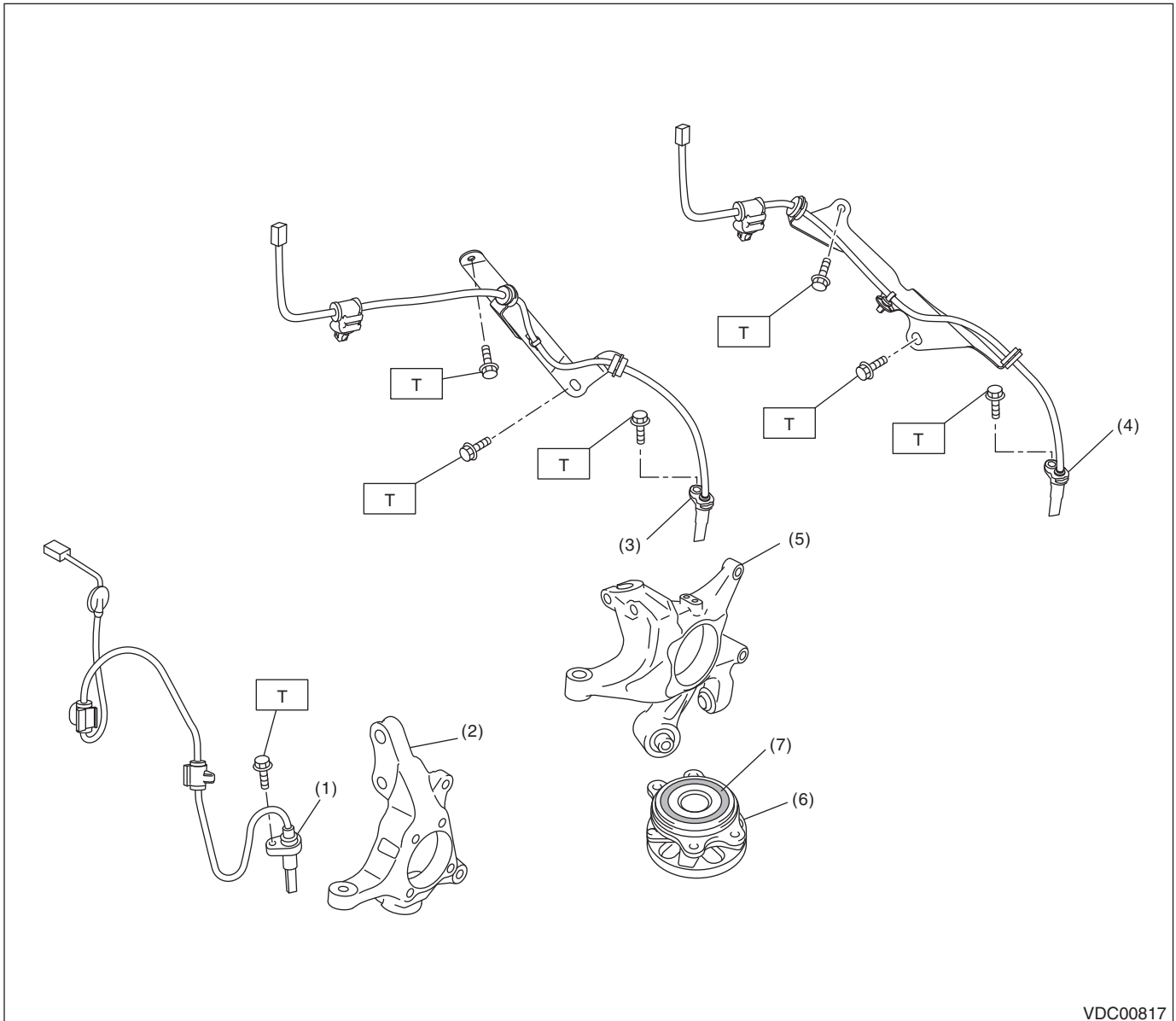
1. General Description

A: SPECIFICATION

| Item | | | | Specification or identification | |
|--------------------------|--|-------|---------------------------|-----------------------------------|--|
| ABS wheel speed sensor | ABS wheel speed sensor gap (for reference) | Front | | 0.77 — 1.43 mm (0.030 — 0.056 in) | |
| | | Rear | | 0.64 — 1.56 mm (0.025 — 0.061 in) | |
| | Identifications of harness (marks, color) | Front | (Except for OBK model) | S1 (Pink) | |
| | | | OBK model | S2 (Blue) | |
| | | Rear | RH (Except for OBK model) | S3 (Yellow) | |
| | | | LH (Except for OBK model) | S4 (White) | |
| | | | RH (OBK model) | S5 (Red) | |
| | | | RH (OBK model) | S6 (Light green) | |
| VDCCM&H/U Identification | | | | V1 | |

B: COMPONENT

1. ABS WHEEL SPEED SENSOR



VDC00817

- | | |
|--|----------------------|
| (1) Front ABS wheel speed sensor | (5) Rear housing |
| (2) Front housing | (6) Hub unit bearing |
| (3) Rear ABS wheel speed sensor (except for OBK model) | (7) Magnetic encoder |
| (4) Rear ABS wheel speed sensor (OBK model) | |

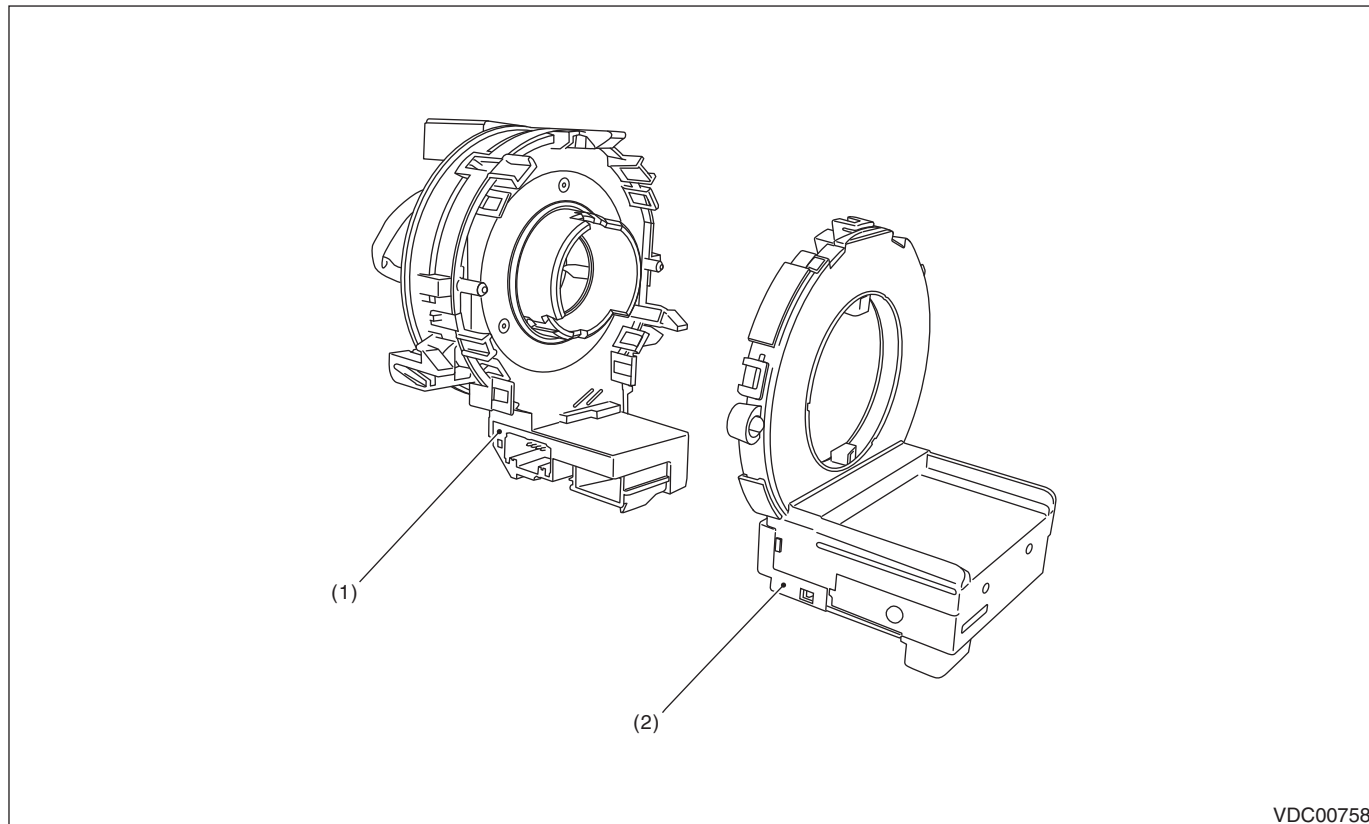
Tightening torque: N·m (kgf-m, ft-lb)

T: 7.5 (0.76, 5.5)

General Description

VEHICLE DYNAMICS CONTROL (VDC)

2. STEERING ANGLE SENSOR

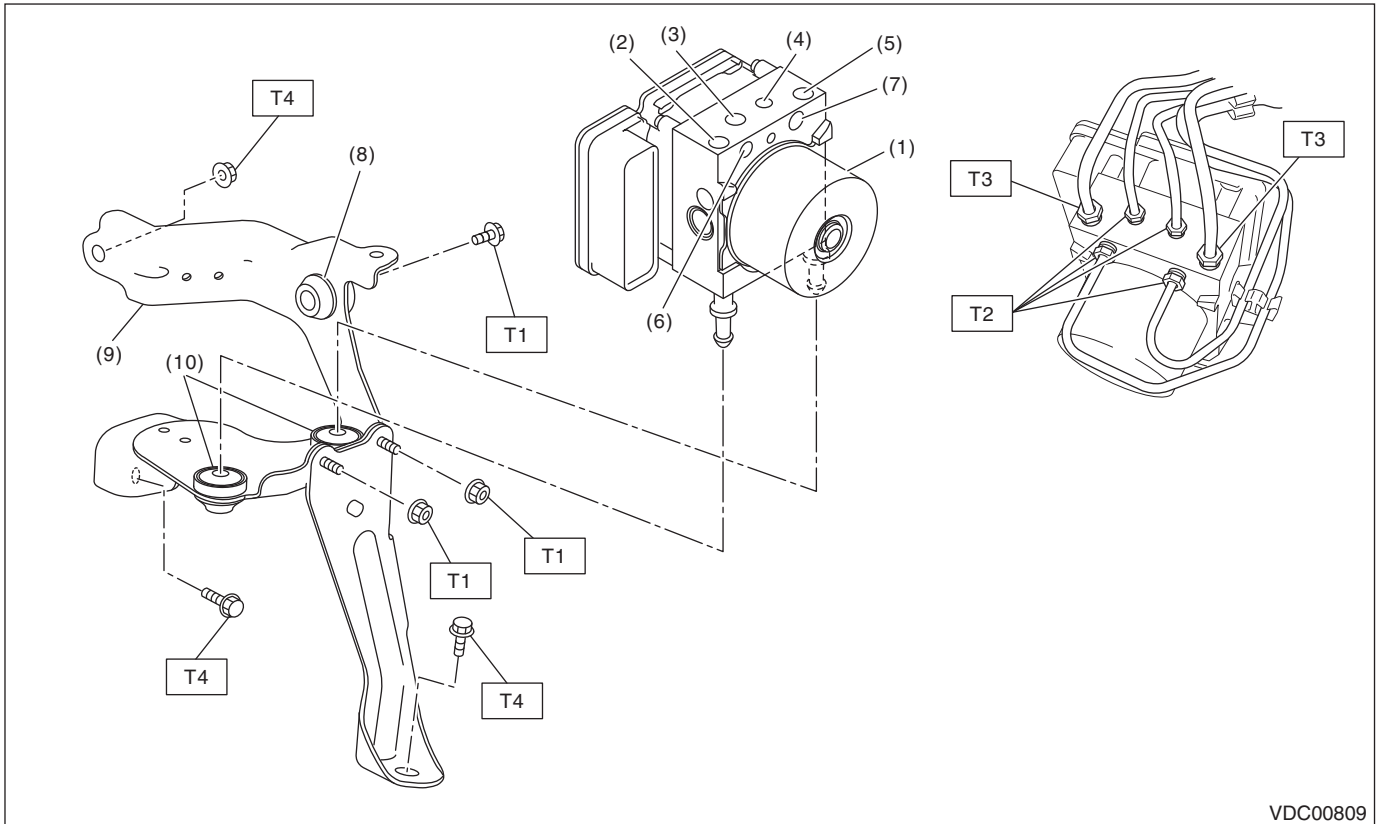


(1) Steering roll connector

(2) Steering angle sensor

VDC00758

3. VDC CONTROL MODULE & HYDRAULIC CONTROL UNIT (VDCCM&H/U)



VDC00809

- | | |
|---|---------------------|
| (1) VDC control module and hydraulic control unit (VDCCM&H/U) | (6) Rear RH outlet |
| (2) Secondary inlet | (7) Rear LH outlet |
| (3) Front LH outlet | (8) Damper & spacer |
| (4) Front RH outlet | (9) Bracket |
| (5) Primary inlet | (10) Damper |

Tightening torque:N·m (kgf-m, ft-lb)

T1: 7.5 (0.76, 5.5)

T2: 15 (1.5, 11.1)

T3: 19 (1.9, 14)

T4: 33 (3.4, 24.3)

General Description

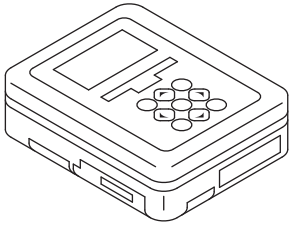
VEHICLE DYNAMICS CONTROL (VDC)

C: CAUTION

- Wear appropriate work clothing, including a cap, protective goggles and protective shoes when performing any work.
- Remove contamination including dirt and corrosion before removal, installation or disassembly.
- Keep the disassembled parts in order and protect them from dust and dirt.
- Before disconnecting connectors of sensors or units, be sure to disconnect the ground cable from the battery.
- Before removal, installation or disassembly, be sure to clarify the failure. Avoid unnecessary removal, installation, disassembly and replacement.
- Vehicle components are extremely hot after driving. Be wary of receiving burns from heated parts.
- Be sure to tighten fasteners including bolts and nuts to the specified torque.
- Place shop jacks or rigid racks at the specified points.

D: PREPARATION TOOL

1. SPECIAL TOOL

| ILLUSTRATION | TOOL NUMBER | DESCRIPTION | REMARKS |
|---|-------------|-------------------------------|--|
|  ST1B022XU0 | 1B022XU0 | SUBARU SELECT MONITOR III KIT | Used for setting of each function and troubleshooting for electrical system. |

2. GENERAL TOOL

| TOOL NAME | REMARKS |
|----------------|---|
| Circuit tester | Used for measuring resistance, voltage and current. |
| Pressure gauge | Used for measuring oil pressure. |
| Oscilloscope | Used for measuring the sensor. |