

# General Description

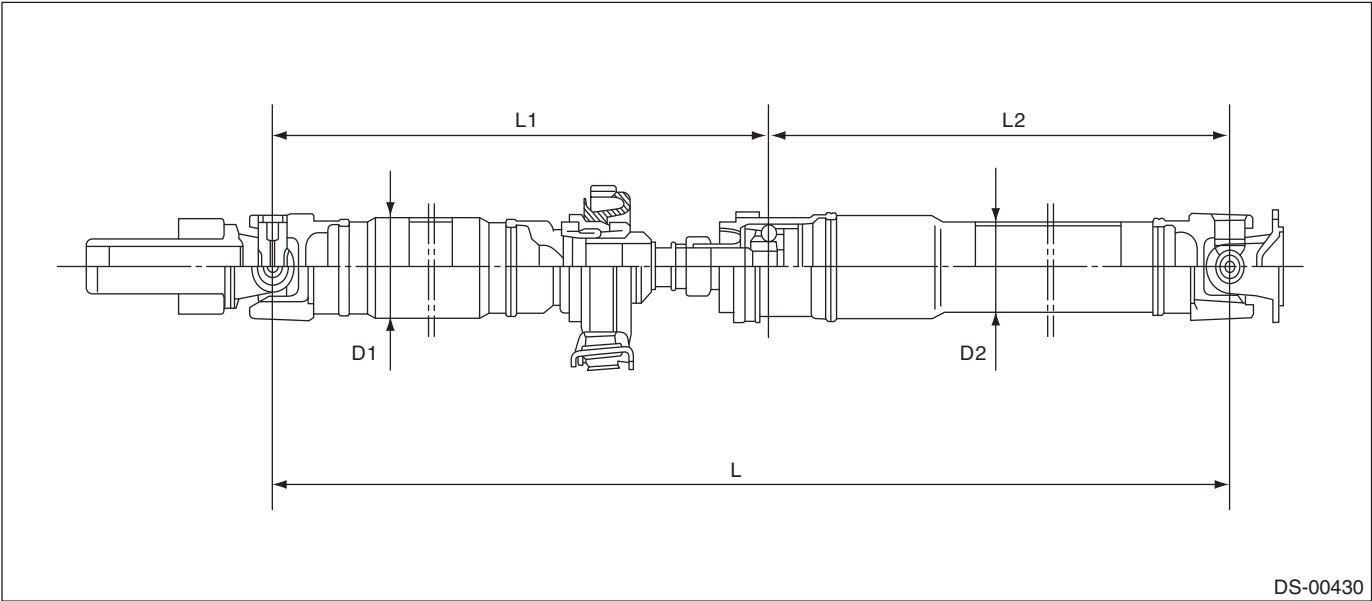
## DRIVE SHAFT SYSTEM

### 1. General Description

#### A: SPECIFICATION

##### 1. PROPELLER SHAFT

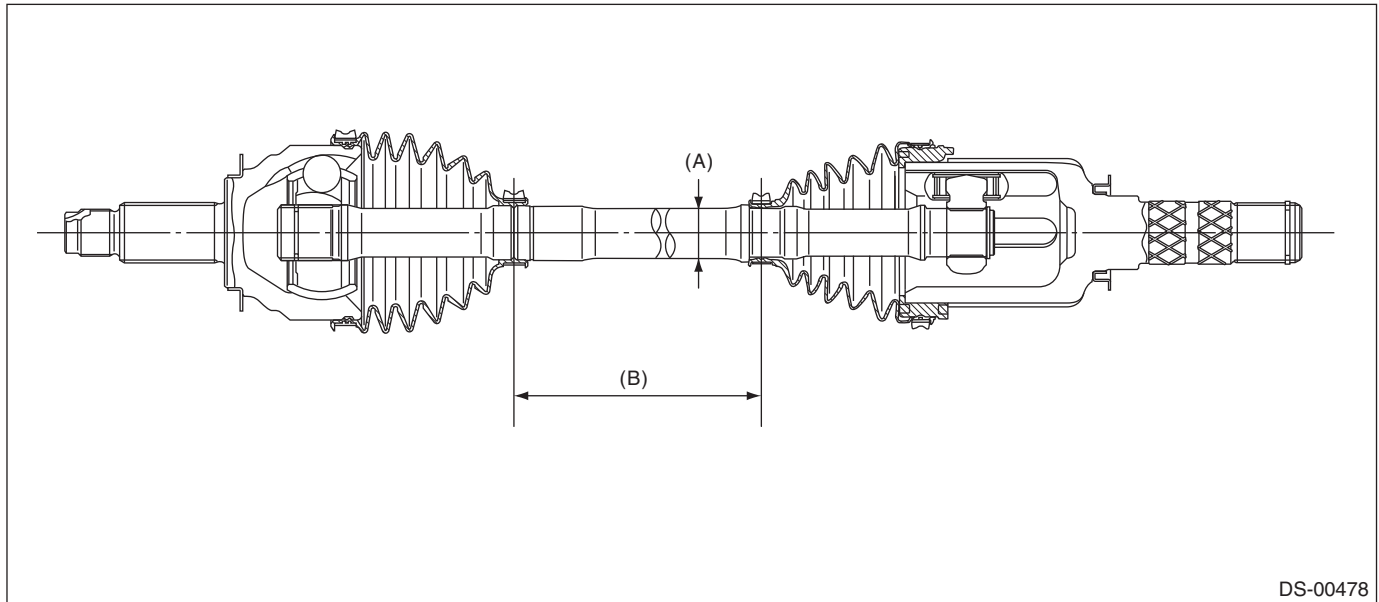
Car line		All models	
Propeller shaft type		EDJ	
Front propeller shaft Joint-to-joint length: L <sub>1</sub>	mm (in)	CVT	578 (22.76)
		6MT	735.5 (28.96)
		5AT	562 (22.13)
Rear propeller shaft Joint-to-Joint length: L <sub>2</sub>		mm (in)	828 (32.6)
Outer diameter of tube:	mm (in)	D <sub>1</sub>	63.5 (2.500)
		D <sub>2</sub>	57.5 (2.264)



DS-00430

### 2. FRONT DRIVE SHAFT ASSEMBLY

Model	Type of drive shaft	Axle diameter $\phi$ mm (in)	Axle length mm (in)
All models	AC + AAR	22.67 (0.89)	352.4 (13.87)

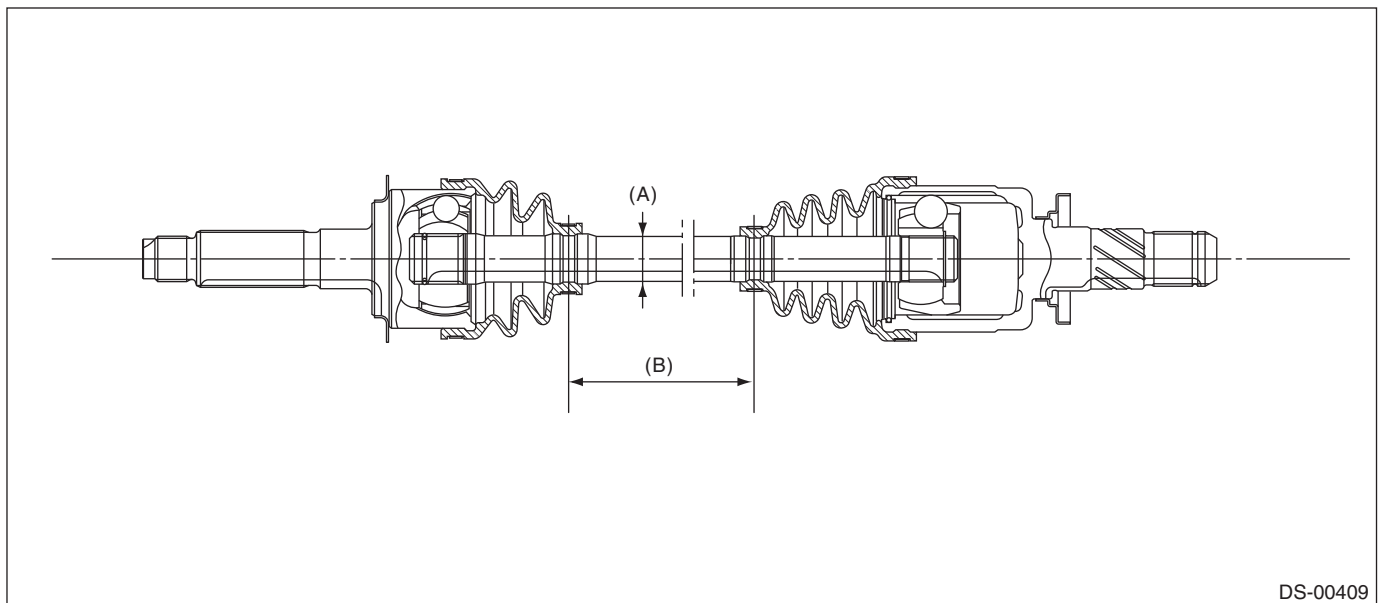


(A) Axle diameter

(B) Axle length

### 3. REAR DRIVE SHAFT ASSEMBLY

Model	Type of drive shaft	Axle diameter $\phi$ mm (in)	Axle length mm (in)
Sedan CVT	BJ + DOJ	22 (0.87)	400.6 (15.77)
Other than the above	EBJ + DOJ	22 (0.87)	394.3 (15.52)



(A) Axle diameter

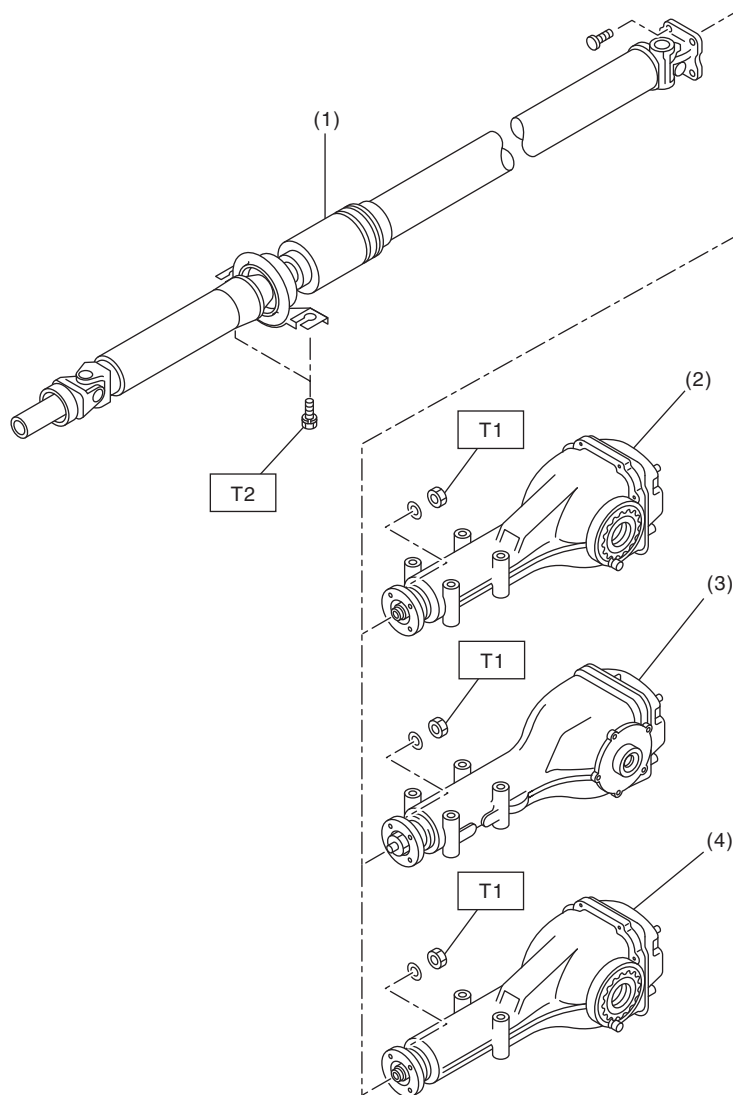
(B) Axle length

# General Description

## DRIVE SHAFT SYSTEM

### B: COMPONENT

#### 1. PROPELLER SHAFT



DS-00471

- (1) Propeller shaft
- (2) Rear differential (VA1-type)

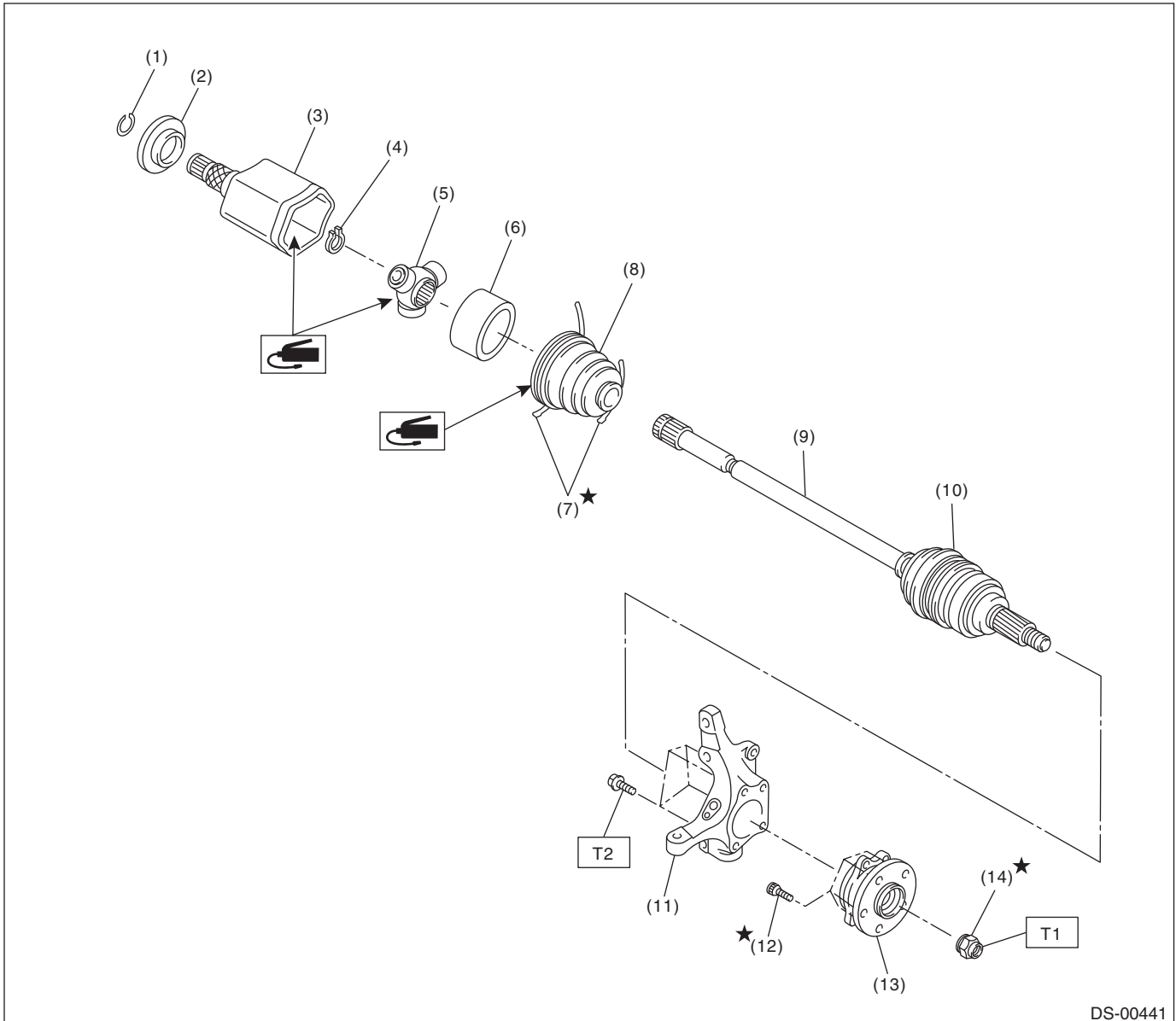
- (3) Rear differential (T-type)
- (4) Rear differential (VA2-type)

**Tightening torque: N·m (kgf-m, ft-lb)**

**T1: 31 (3.2, 22.9)**

**T2: 52 (5.3, 38.4)**

### 2. FRONT AXLE



DS-00441

- (1) Circlip
- (2) Baffle plate
- (3) Outer race (AAR)
- (4) Snap ring
- (5) Trunnion
- (6) Grommet

- (7) Boot band
- (8) Boot (AAR)
- (9) AC shaft ASSY
- (10) Boot (AC)
- (11) Housing
- (12) Hub bolt

- (13) Front hub unit bearing
- (14) Axle nut

**Tightening torque: N·m (kgf-m, ft-lb)**

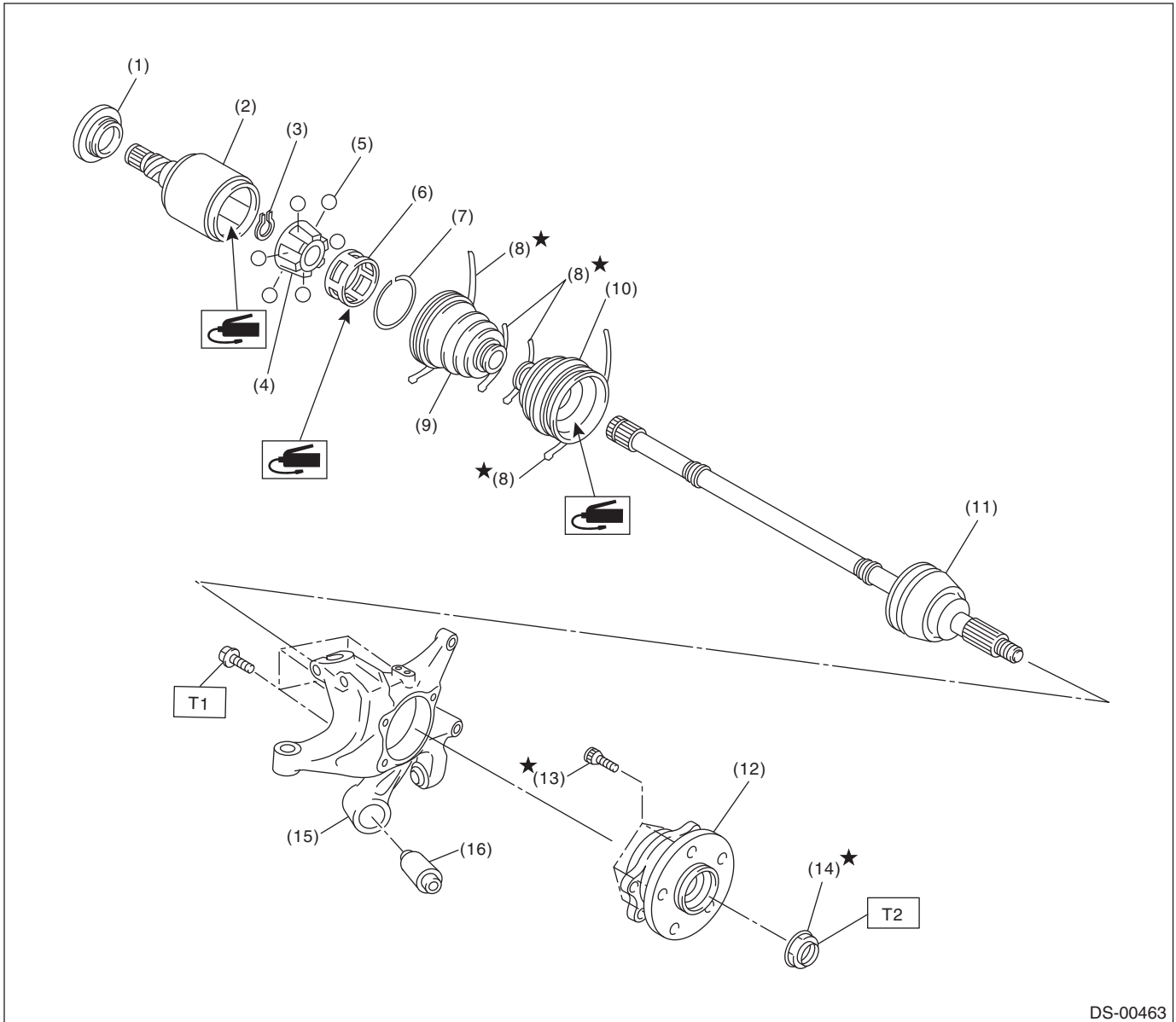
**T1: 220 (22.4, 162.3)**

**T2: 65 (6.6, 47.9)**

# General Description

## DRIVE SHAFT SYSTEM

### 3. REAR AXLE



DS-00463

(1) Baffle plate	(8) Boot band	(14) Axle nut
(2) Outer race (DOJ)	(9) Boot (DOJ)	(15) Rear axle housing
(3) Snap ring	(10) Boot (BJ)	(16) Rear bushing
(4) Inner race	(11) BJ shaft ASSY (Sedan CVT model) EBJ shaft ASSY (Except for sedan CVT model)	
(5) Ball	(12) Rear hub unit bearing	
(6) Cage	(13) Hub bolt	
(7) Snap ring		

**Tightening torque: N·m (kgf-m, ft-lb)**

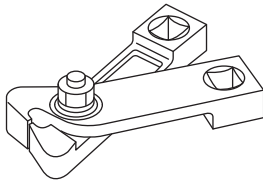
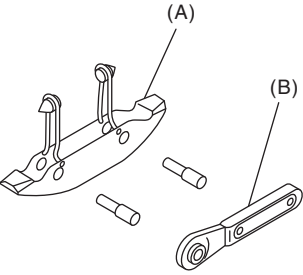
**T1: 65 (6.6, 47.9)**

**T2: 240 (24.5, 177)**

**C: CAUTION**

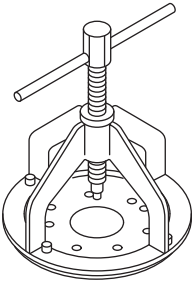
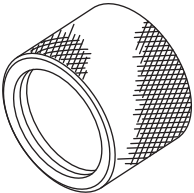
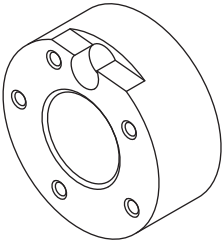
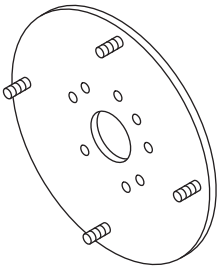
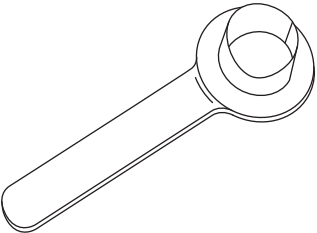
- Wear appropriate work clothing, including a cap, protective goggles and protective shoes when performing any work.
- Remove contamination including dirt and corrosion before removal, installation or disassembly.
- Keep the disassembled parts in order and protect them from dust and dirt.
- Before removal, installation or disassembly, be sure to clarify the failure. Avoid unnecessary removal, installation, disassembly and replacement.
- Vehicle components are extremely hot after driving. Be wary of receiving burns from heated parts.
- Use SUBARU genuine grease etc. or equivalent. Do not mix grease etc. of different grades or manufacturers.
- Be sure to tighten fasteners including bolts and nuts to the specified torque.
- Place shop jacks or rigid racks at the specified points.
- Apply grease onto sliding or revolving surfaces before installation.
- Before installing snap rings, apply sufficient amount of grease to avoid damage and deformation.
- Before securing a part on a vise, place cushioning materials such as wood blocks, aluminum plates, or waste cloth between the part and the vise.

**D: PREPARATION TOOL****1. SPECIAL TOOL**

ILLUSTRATION	Part number	DESCRIPTION	REMARKS
 ST28099AC000	28099AC000	BOOT BAND PLIER	Used for tightening the boot band. (Front boot band)
 ST-925091000	925091000	BAND TIGHTENING TOOL	Used for tightening the boot band. (A) Jig for the band (B) Ratchet wrench

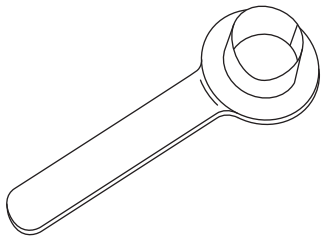
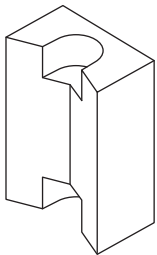
# General Description

## DRIVE SHAFT SYSTEM

ILLUSTRATION	Part number	DESCRIPTION	REMARKS
 ST-926470000	926470000	AXLE SHAFT PULLER	<ul style="list-style-type: none"> <li>Used for removing the axle shaft.</li> <li>Used together with AXLE SHAFT PULLER PLATE (28099PA110).</li> </ul>
 ST18675AA000	18675AA000	DIFFERENTIAL SIDE OIL SEAL INSTALLER	Used for installing the differential side retainer oil seal.
 ST-927080000	927080000	HUB STAND	Used for assembling hub bolt in hub.
 ST28099PA110	28099PA110	AXLE SHAFT PULLER PLATE	Exchange with the plate of the AXLE SHAFT PULLER (926470000) to use.
 ST28099PA090	28099PA090	OIL SEAL PROTECTOR	<ul style="list-style-type: none"> <li>Used for installing the rear drive shaft to the rear differential.</li> <li>For protecting the oil seal.</li> </ul>

# General Description

## DRIVE SHAFT SYSTEM

ILLUSTRATION	Part number	DESCRIPTION	REMARKS
 ST28399SA010	28399SA010	OIL SEAL PROTECTOR	<ul style="list-style-type: none"> <li>Used for installing front drive shaft into front differential.</li> <li>For protecting the oil seal.</li> </ul>
 ST28399AG000	28399AG000	HUB STAND	Used for extracting hub bolt.

## 2. GENERAL TOOL

TOOL NAME	REMARKS
Puller	Used for removing the ball joint from knuckle arm.
Dial gauge	Used for inspecting the propeller shaft run-out.
Extension cap	Used for preventing leakage of gear oil or ATF.
Crowbar	Used for extracting drive shaft.