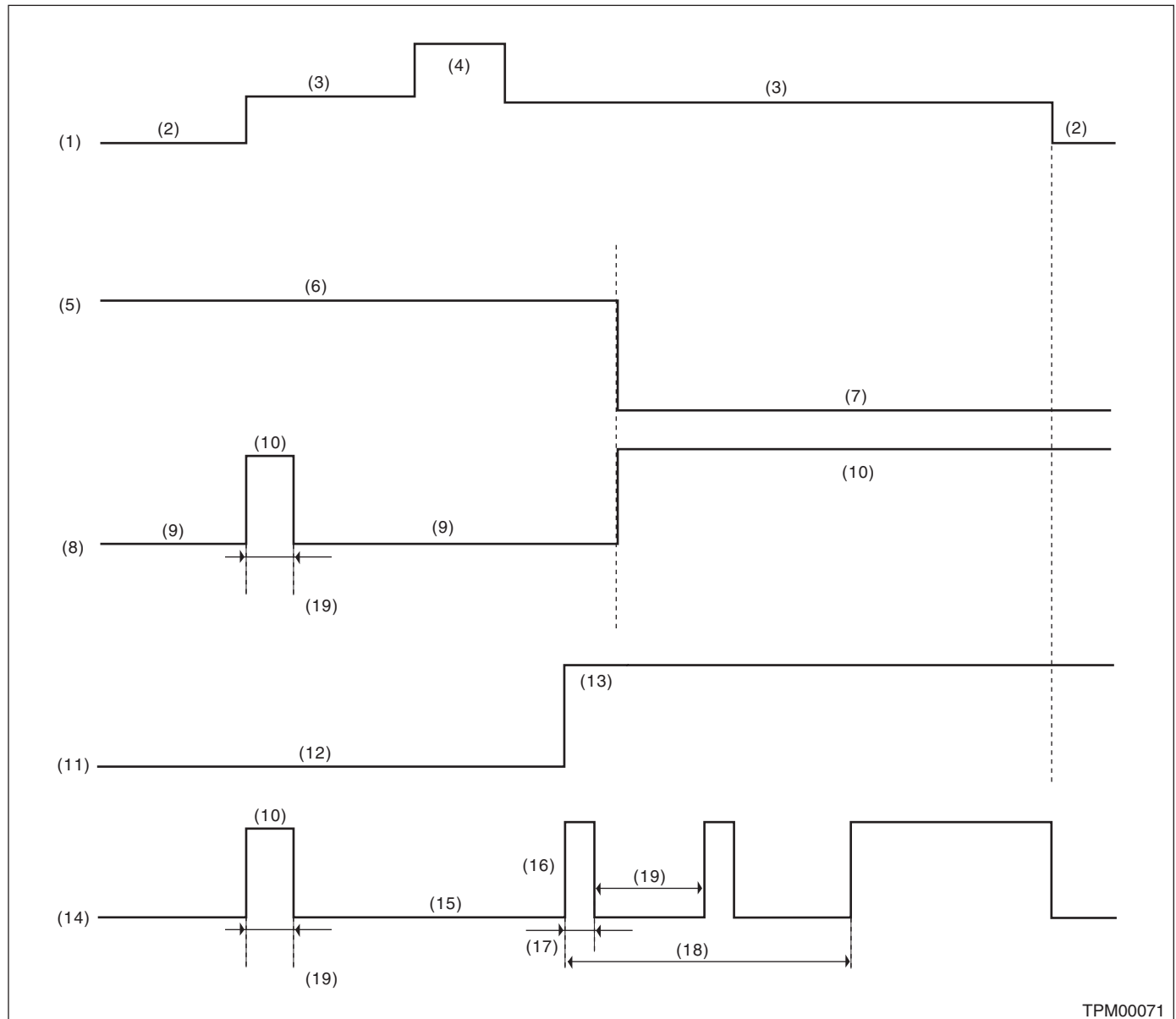


12. Tire Pressure Warning Light / Trouble Indicator Light Illumination Pattern

A: INSPECTION



TPM00071

- | | | |
|---|--|------------------|
| (1) Ignition switch | (8) Tire inflation pressure warning light (pressure condition) | (15) Light OFF |
| (2) OFF | (9) Light OFF | (16) Blink |
| (3) ON | (10) Light ON | (17) 1 second |
| (4) Start | (11) System condition | (18) 25 blinking |
| (5) Tire inflation pressure condition | (12) Normal operation | (19) 2 seconds |
| (6) Within standard value | (13) Faulty | |
| (7) Less than standard value
(For the pressure warning level, refer to "CURRENT DATA".) <Ref. to TPM(diag)-13, LIST, Read Current Data.> | (14) Tire inflation pressure warning light (system condition) | |

Tire Pressure Warning Light / Trouble Indicator Light Illumination Pattern

TIRE PRESSURE MONITORING SYSTEM (DIAGNOSTICS)

- 1) If the tire inflation pressure warning light does not illuminate in accordance with this illumination pattern, there must be an electrical malfunction.
- 2) If the tire inflation pressure warning light does not go off, check the tire inflation pressure monitoring control module/warning light circuits and the combination meter circuit. <Ref. to TPM(diag)-20, TIRE PRESSURE WARNING LIGHT DOES NOT COME OFF, Tire Pressure Warning Light / Trouble Indicator Light Illumination Pattern.>

NOTE:

If the problem is fixed while driving at approximately 40 km/h (25 MPH) after the tire inflation pressure warning light blinks/lights, the warning light goes out and the tire inflation pressure monitoring system operates normally. (If there is a decrease in tire inflation pressure, or a malfunction of the system, the malfunction history is displayed.)

Tire Pressure Warning Light / Trouble Indicator Light Illumination Pattern

TIRE PRESSURE MONITORING SYSTEM (DIAGNOSTICS)

B: TIRE PRESSURE WARNING LIGHT DOES NOT COME ON

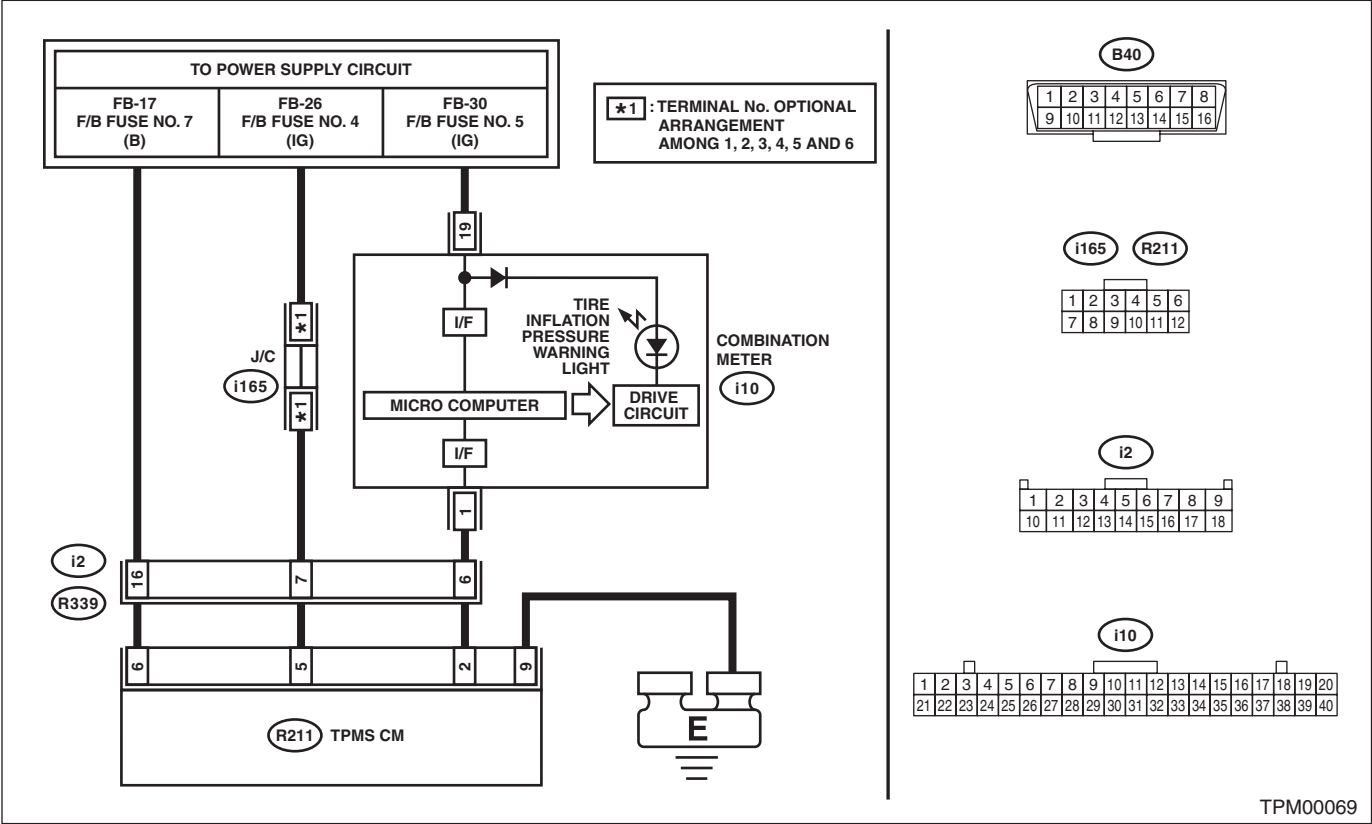
DETECTING CONDITION:

Defective combination meter

TROUBLE SYMPTOM:

When the ignition switch is turned to ON (engine OFF), the tire inflation pressure warning light does not come on (for approximately 2 seconds).

WIRING DIAGRAM:



Step	Check	Yes	No
1	CHECK DIAGNOSTIC TROUBLE CODE (DTC). Read the DTC by connecting the Subaru Select Monitor. <Ref. to TPM(diag)-11, OPERATION, Read Diagnostic Trouble Code (DTC).>	Is diagnostics code (DTC) displayed?	Perform the diagnosis according to DTC. <Ref. to TPM(diag)-23, List of Diagnostic Trouble Code (DTC).>
			Replace the combination meter. <Ref. to IDI-20, REMOVAL, Combination Meter.>

Tire Pressure Warning Light / Trouble Indicator Light Illumination Pattern

TIRE PRESSURE MONITORING SYSTEM (DIAGNOSTICS)

C: TIRE PRESSURE WARNING LIGHT DOES NOT COME OFF

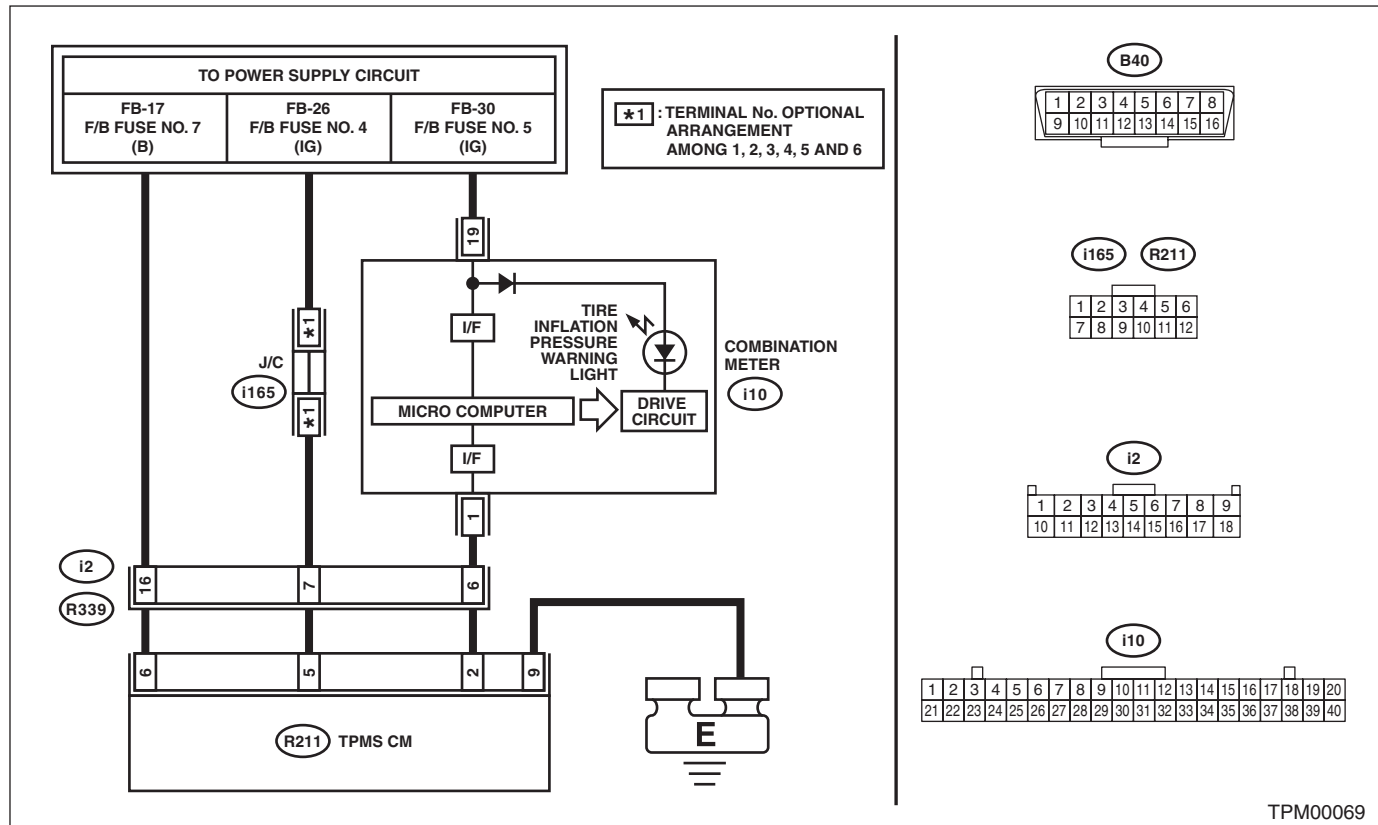
DETECTING CONDITION:

- Defective combination meter
- Tires inflation pressure drop
- Transmitter ID not registered

TROUBLE SYMPTOM:

Tire inflation pressure warning light remains illuminating after engine starts.

WIRING DIAGRAM:



Step	Check	Yes	No
1 CHECK DIAGNOSTIC TROUBLE CODE (DTC). Read the DTC by connecting the Subaru Select Monitor. <Ref. to TPM(diag)-11, OPERATION, Read Diagnostic Trouble Code (DTC).>	Is DTC displayed?	Perform the diagnosis according to DTC. <Ref. to TPM(diag)-23, List of Diagnostic Trouble Code (DTC).>	Go to step 2.
2 CHECK TRANSMITTER (ID). Display the transmitter ID of the tire inflation pressure monitoring system.	Is the transmitter ID registered?	Go to step 3.	Register the transmitter ID. <Ref. to TPM(diag)-14, OPERATION, Register Transmitter (ID).>
3 CHECK TRANSMITTER DATA OUTPUT. 1) Select data display of the tire inflation pressure monitoring. 2) Start the engine and check the tire inflation pressure warning light output.	Is the warning light output ON?	Replace the tire inflation pressure monitoring control module.	Replace the combination meter. <Ref. to IDI-20, REMOVAL, Combination Meter.>

Tire Pressure Warning Light / Trouble Indicator Light Illumination Pattern

TIRE PRESSURE MONITORING SYSTEM (DIAGNOSTICS)

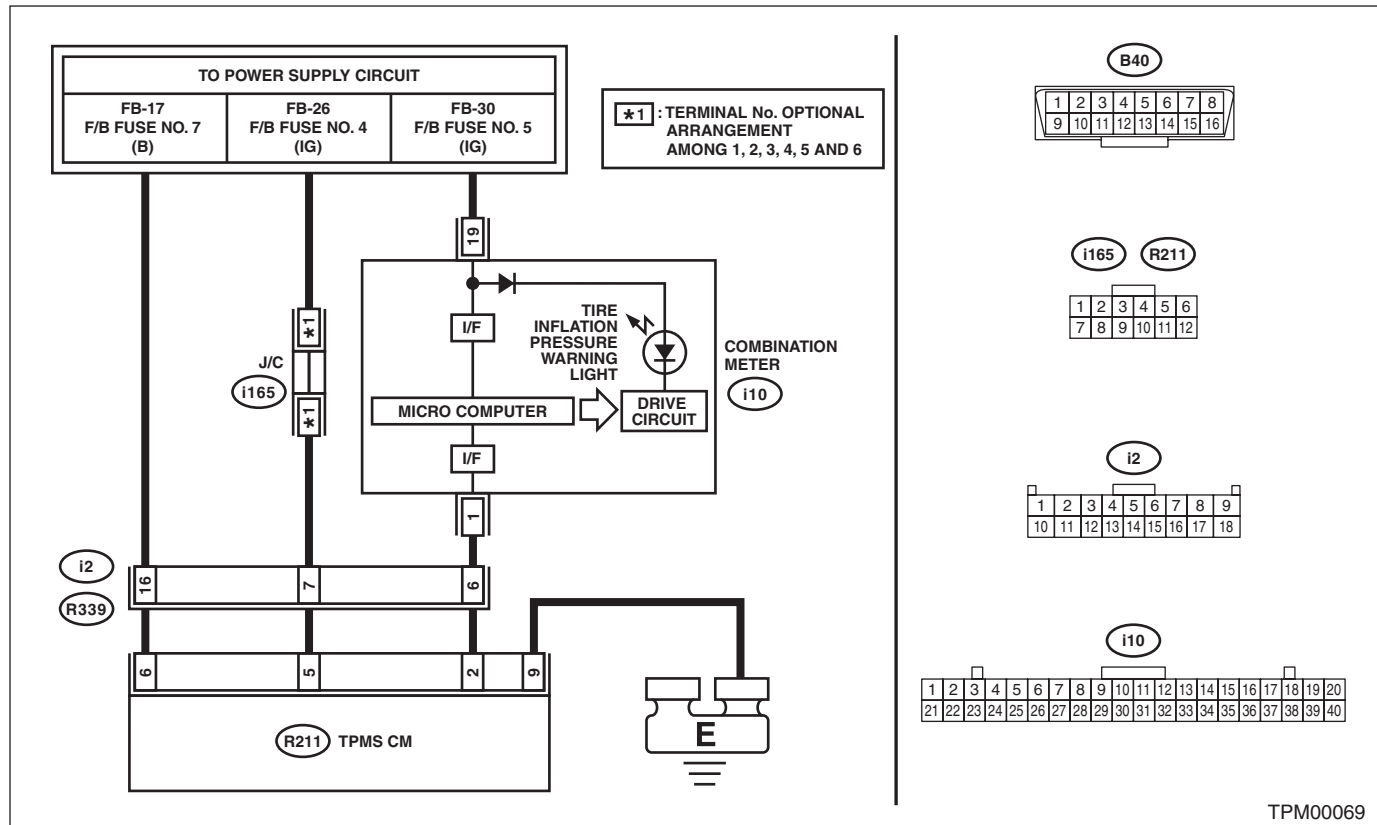
D: TIRE PRESSURE WARNING LIGHT IS 25 TIMES BLINKING AND TURN ON DETECTING CONDITION:

- Tire inflation pressure monitoring control module is faulty.
- Defective harness
- Transmitter is faulty.

TROUBLE SYMPTOM:

Every time the engine starts, tire inflation pressure warning light blinks 25 times and then illuminates.

WIRING DIAGRAM:



Step	Check	Yes	No
1	CHECK DIAGNOSTIC TROUBLE CODE (DTC). Read the DTC by connecting the Subaru Select Monitor. <Ref. to TPM(diag)-11, OPERATION, Read Diagnostic Trouble Code (DTC).>	Is diagnostics code (DTC) displayed?	Perform the diagnosis according to DTC. <Ref. to TPM(diag)-23, List of Diagnostic Trouble Code (DTC).>
2	CHECK HARNESS. 1) Connect the Subaru Select Monitor to the terminal No. 2 of the tire inflation pressure monitoring control module connector (R211). Connector & terminal (R211) No. 2 (+) — Chassis ground (—): 2) Turn the ignition switch to ON, and select "Oscilloscope" from the Main Menu of Subaru Select Monitor. 3) Check the voltage displayed.	Is the voltage 10 V or more?	Go to step 2. Go to step 4.

Tire Pressure Warning Light / Trouble Indicator Light Illumination Pattern

TIRE PRESSURE MONITORING SYSTEM (DIAGNOSTICS)

Step	Check	Yes	No
3 CHECK HARNESS. 1) Check the output waveform displayed in the oscilloscope of Subaru Select Monitor. <div data-bbox="191 302 734 634" data-label="Figure"> </div>	Is the pattern the same output waveform as shown in the figure? (1) 400 ± 20 ms Duty 50 % High: Battery voltage Low: 1.5 V or less	Check the combination meter.	Replace the tire inflation pressure monitoring control module.
4 CHECK HARNESS. 1) Disconnect the tire inflation pressure monitoring control module connector. 2) Connect the Subaru Select Monitor to the terminal No. 2 of the tire inflation pressure monitoring control module connector (R211). Connector & terminal (R211) No. 2 (+) — Chassis ground (-): 3) Turn the ignition switch to ON, and select "Oscilloscope" from the Main Menu of Subaru Select Monitor. 4) Check the voltage displayed.	Is the voltage 10 V or more?	Replace the tire inflation pressure monitoring control module.	The harness between the combination meter connector and the tire inflation pressure monitoring control module connector is shorted or open. Repair or replace the harness.