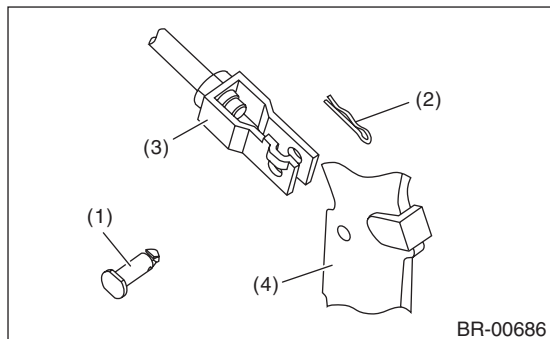


14.Brake Pedal

A: REMOVAL

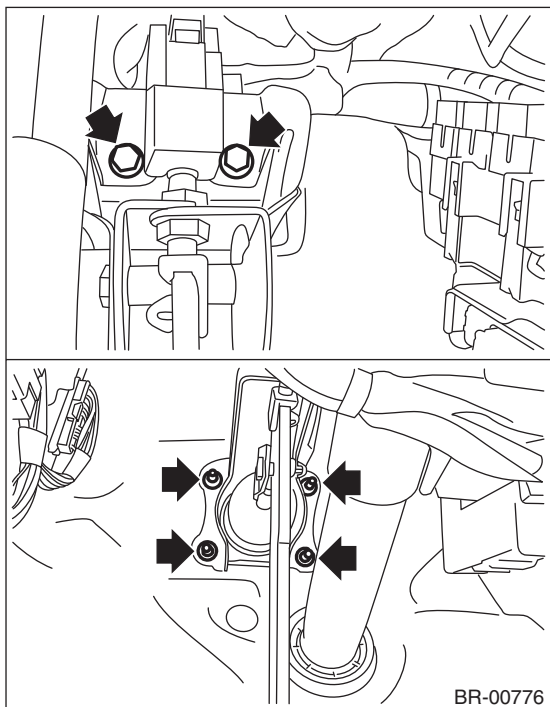
1. AT MODEL

- 1) Disconnect the connector from stop light switch.
- 2) Remove the clevis pin which secures the brake pedal and the operating rod.



- (1) Clevis pin
- (2) Snap pin
- (3) Operating rod
- (4) Brake pedal

- 3) Remove the bolt and nut which secures the brake pedal bracket.



2. MT MODEL

Refer to "CLUTCH PEDAL". <Ref. to CL-26, REMOVAL, Clutch Pedal.>

B: INSTALLATION

1. AT MODEL

- 1) Install the bolt and nut which secures the brake pedal bracket.

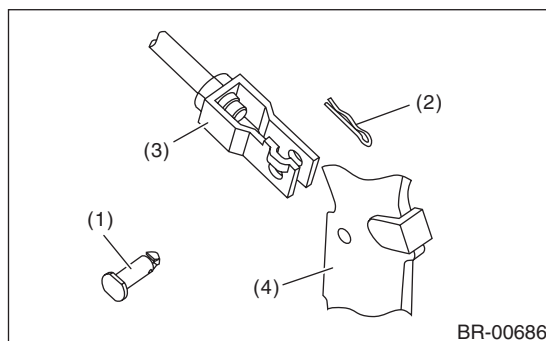
Tightening torque:

18 N·m (1.8 kgf-m, 13.3 ft-lb)

- 2) Install the clevis pin and snap pin which secure the operating rod and brake pedal.

NOTE:

- Replace the clevis pin with a new part.
- Apply NIGTIGHT LYW NO. 2 grease to the clevis pin.



- (1) Clevis pin
- (2) Snap pin
- (3) Operating rod
- (4) Brake pedal

- 3) Connect the stop light switch connector.
- 4) Check the brake light illumination condition.
- 5) Check the brake pedal after installation. <Ref. to BR-40, INSPECTION, Brake Pedal.>

2. MT MODEL

Refer to "CLUTCH PEDAL". <Ref. to CL-26, INSTALLATION, Clutch Pedal.>

C: INSPECTION

1) Move the brake pedal pads in a horizontal direction with a force of approx. 10 N (1 kgf, 2 lbf), and check that the pedal deflection is in the range of specifications.

Tightening torque:

22 N·m (2.2 kgf-m, 16.2 ft-lb)

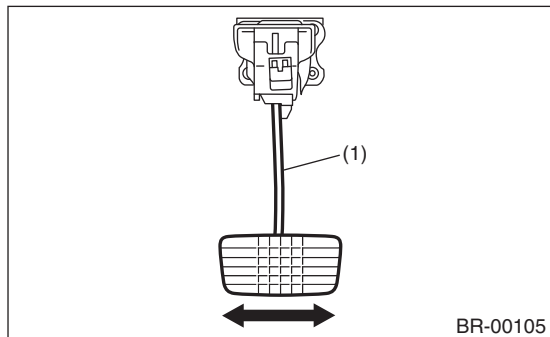
CAUTION:

If excessive deflection is noted, replace with a new bushing.

Deflection of brake pedal:

Limit

5.0 mm (0.197 in) or less



(1) Brake pedal

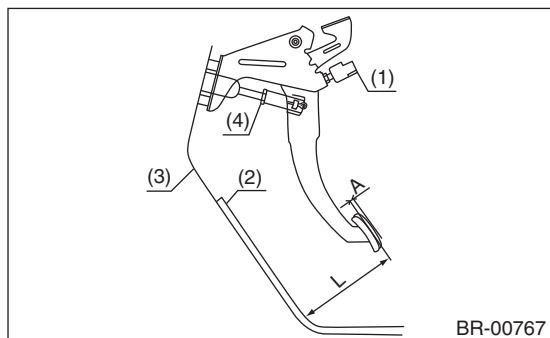
2) Check the position of the pedal pad.

Pedal height L:

140 — 150 mm (5.51 — 5.91 in)

Brake pedal free play A:

2 — 5 mm (0.079 — 0.197 in) [When pulling the brake pedal upward with a force of less than 10 N (1 kgf, 2 lbf).]



(1) Stop light switch

(2) Mat

(3) Toe board

(4) Brake booster operating rod

3) If it is not within the specification, loosen the lock nuts of brake booster operating rod, and rotate the rod to adjust the pedal height L within the specification.

4) Tighten the lock nut.