

AWD Warning Light Display

AUTOMATIC TRANSMISSION (DIAGNOSTICS)

13.AWD Warning Light Display

A: OPERATION

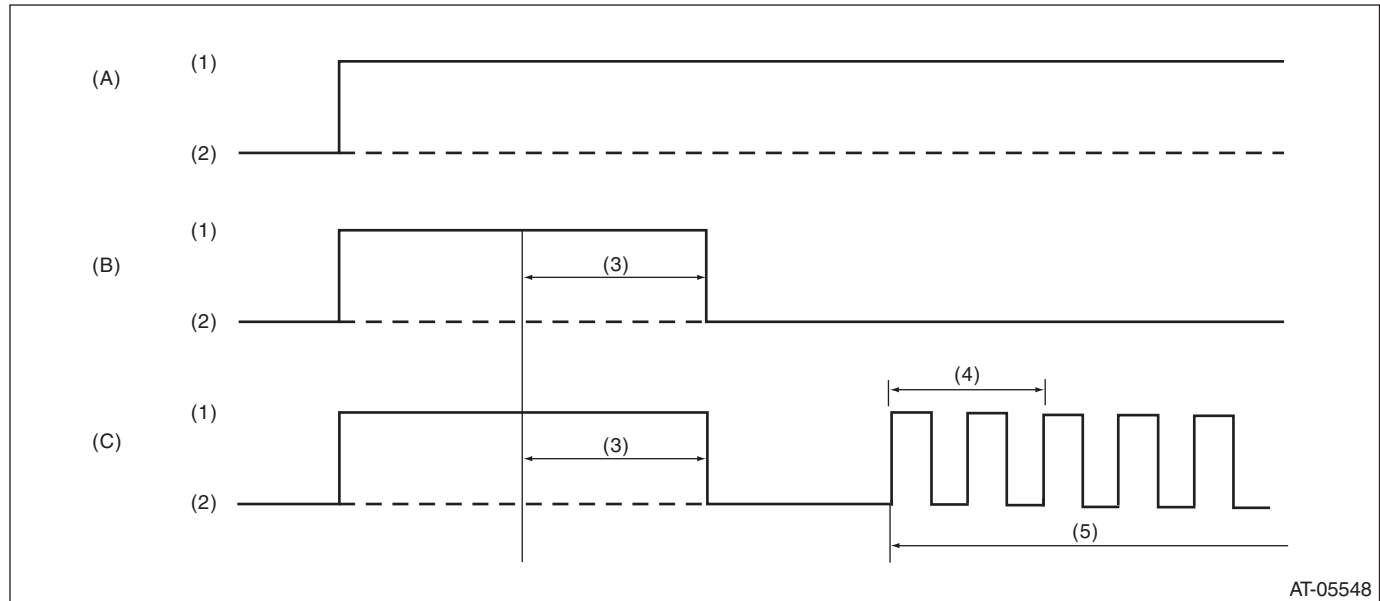
AWD warning light illuminates or blinks at start, or when AWD is faulty.

- Normal

AWD light always illuminates when the ignition switch is ON (engine OFF). Light goes off after two seconds from engine ON.

- Faulty

AWD warning light blinks at 2 Hz, when tires with different diameters are installed, or when the vehicle is driven with air pressure of any of the four tires significantly low.



(A) Ignition switch (engine OFF)

(B) Normal (engine ON)

(C) Faulty (engine ON)

(1) ON

(3) 2 sec.

(5) Blink

(2) OFF

(4) 1 sec.

If the AWD light does not illuminate, or illumination patterns are not as above, check the AWD light circuit.
<Ref. to 5AT(diag)-29, INSPECTION, AWD Warning Light Display.>

AWD Warning Light Display

AUTOMATIC TRANSMISSION (DIAGNOSTICS)

B: INSPECTION

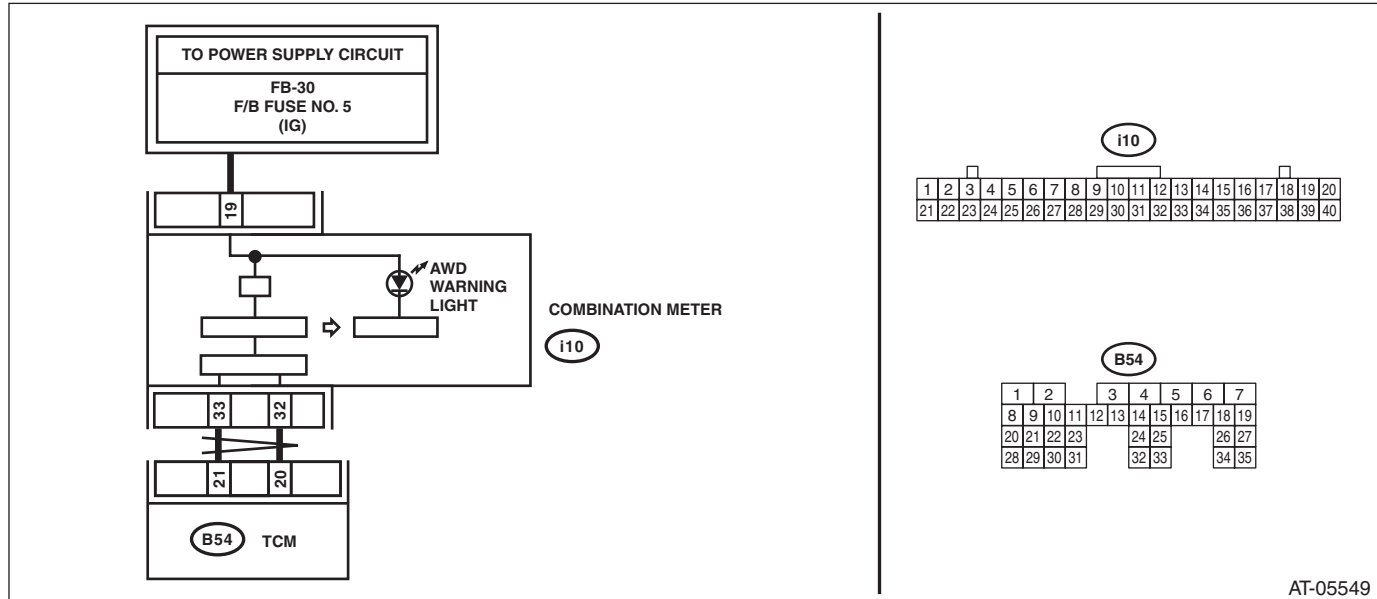
DIAGNOSIS:

- AWD light circuit is open or shorted.
- Combination meter malfunction
- TCM malfunction

TROUBLE SYMPTOM:

- When the ignition switch is turned to ON, the AWD light does not illuminate.
- AWD light remains lit after engine start.

WIRING DIAGRAM:



AT-05549

| Step | Check | Yes | No |
|--|--|--|--|
| 1 CHECK AWD LIGHT. Turn the ignition switch to ON. | Does the AWD light illuminate? | Go to step 2. | Perform self diagnosis of the combination meter. <Ref. to IDI-10, INSPECTION, Combination Meter System.> |
| 2 CHECK AWD LIGHT. Start the engine. | Does AWD light go off after two seconds from engine start? | Current condition is normal. Go back to "Basic Diagnostic Procedure". <Ref. to 5AT(diag)-2, Basic Diagnostic Procedure.> | Go to step 3. |
| 3 CHECK COMBINATION METER. Perform self diagnosis of the combination meter. <Ref. to IDI-10, INSPECTION, Combination Meter System.> | Is there any trouble with the combination meter? | Repair the combination meter. | Replace the TCM. <Ref. to 5AT-58, Transmission Control Module (TCM).> |