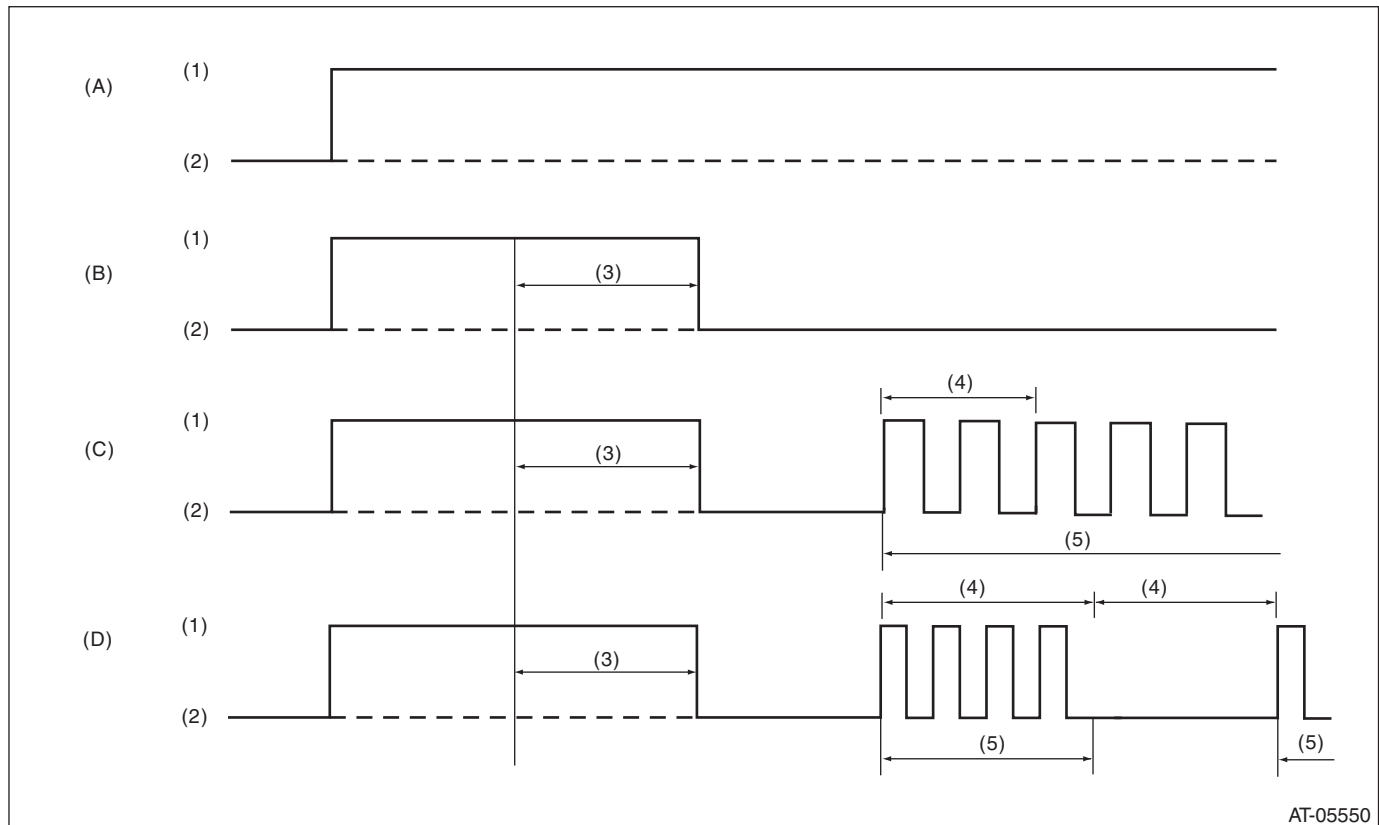


12.AT OIL TEMP Warning Light Display

A: OPERATION

When any on-board diagnostics item is malfunctioning, or the learning has not yet completed, AT OIL TEMP light blinks. Blinking continues from the engine start to the ignition switch OFF. The malfunctioning part or unit can be determined by a DTC. Problems which occurred previously can also be identified through the memory function. If the AT OIL TEMP light does not blink although a problem is occurring, the problem can be determined by checking the performance characteristics of each sensor using the Subaru Select Monitor. If the learning has not yet completed, "AT learning not completed" is displayed when the Subaru Select Monitor is connected while AT OIL TEMP light is blinking. The AT OIL TEMP light blinking will go off, when the learning is performed. Indicator light signal patterns are as shown in the figure.



AT-05550

- (A) Ignition switch (engine OFF) (B) Normal (engine ON) (C) Faulty (engine ON)
 (D) Learning not completed (engine ON)

- (1) ON (3) 2 sec. (5) Blink
 (2) OFF (4) 1 sec.

When the AT OIL TEMP light does not operate normally, check the AT OIL TEMP light circuit. <Ref. to 5AT(diag)-26, INSPECTION, AT OIL TEMP Warning Light Display.>

AT OIL TEMP Warning Light Display

AUTOMATIC TRANSMISSION (DIAGNOSTICS)

B: INSPECTION

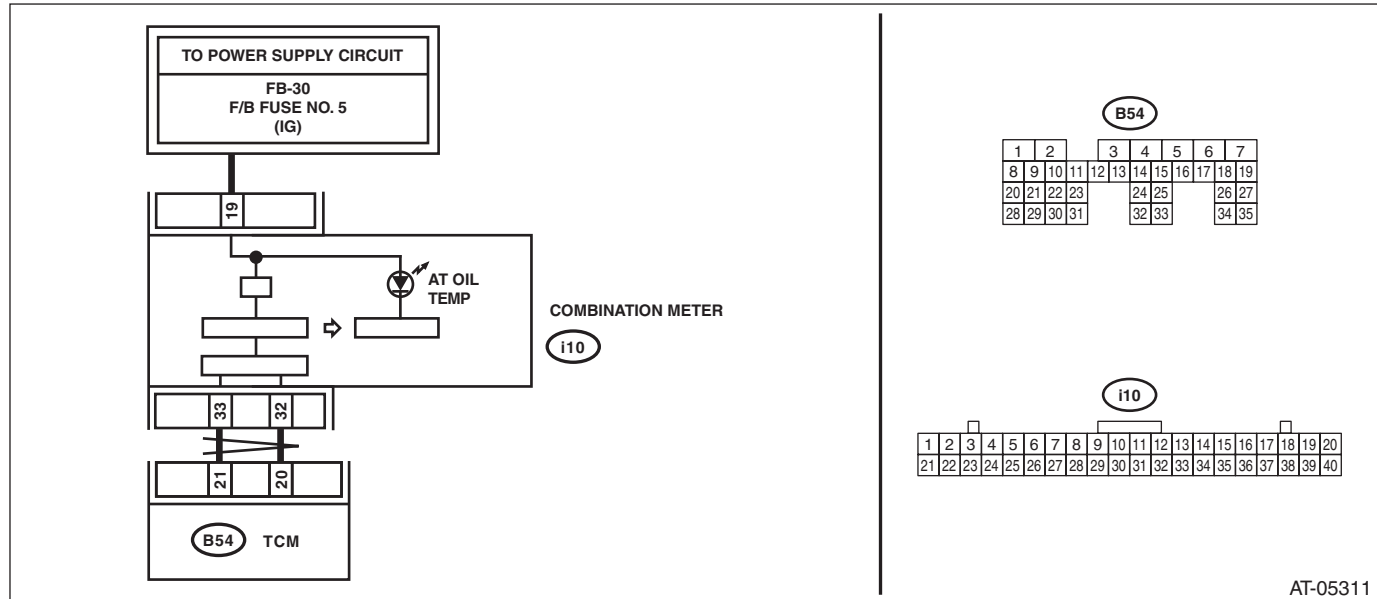
DIAGNOSIS:

- AT OIL TEMP light circuit is open or shorted.
- Combination meter malfunction

TROUBLE SYMPTOM:

- When the ignition switch is turned to ON, the AT OIL TEMP light does not illuminate.
- AT OIL TEMP light remains lit after engine start.

WIRING DIAGRAM:



| Step | Check | Yes | No | |
|------|--|--|---|---|
| 1 | CHECK AT OIL TEMP LIGHT. Turn the ignition switch to ON. | Does the AT OIL TEMP light illuminate? | Go to step 2. | Perform self diagnosis of the combination meter. |
| 2 | CHECK AT OIL TEMP LIGHT. After the ignition switch is ON, wait for 2 seconds or more. | Does the AT OIL TEMP light illuminate? | Go to step 3. | Go to step 4. |
| 3 | CHECK AT OIL TEMP LIGHT. Start the engine. | Does the AT OIL TEMP light go off? | Normal. Go back to "Basic Diagnostic Procedure". <Ref. to 5AT(diag)-2, Basic Diagnostic Procedure.> | Go to step 6. |
| 4 | CHECK SUBARU SELECT MONITOR COMMUNICATION. Connect the Subaru Select Monitor to data link connector. | Is the communication between Subaru Select Monitor and TCM normal? | Go to step 5. | Check the power supply ground circuit of TCM and Subaru Select Monitor communication. <Ref. to 5AT(diag)-30, Diagnostic Procedure for Subaru Select Monitor Communication.> |
| 5 | CHECK DTC. Read the DTC relating the TCM using the Subaru Select Monitor. | Is DTC displayed? | Perform the diagnosis according to DTC. | Go to step 6. |
| 6 | CHECK TCM. Read the data of "ATF Temperature Lamp" using the Subaru Select Monitor. | Is "ON" displayed? | Go to step 7. | Perform self diagnosis of the combination meter. |

AT OIL TEMP Warning Light Display

AUTOMATIC TRANSMISSION (DIAGNOSTICS)

| Step | | Check | Yes | No |
|------|---|---|---|--|
| 7 | CHECK TCM. Read the data of ATF temperature using Subaru Select Monitor. | Is the display 130°C or more? | Go to step 8. | Replace the TCM. <Ref. to 5AT-58, Transmission Control Module (TCM).> |
| 8 | CHECK ATF TEMPERATURE. Check the real fluid temperature from the transmission case surface temperature. | Is the temperature lower than "ATF temperature" displayed on Subaru Select Monitor? | Perform the diagnosis according to DTC P0713. | When ATF temperature can be judged as actually high, perform the diagnosis again after the ATF temperature lowers. |