

11.EGR Valve

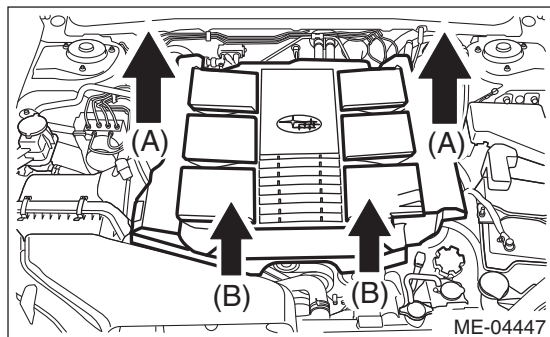
A: REMOVAL

1) Remove the collector cover.

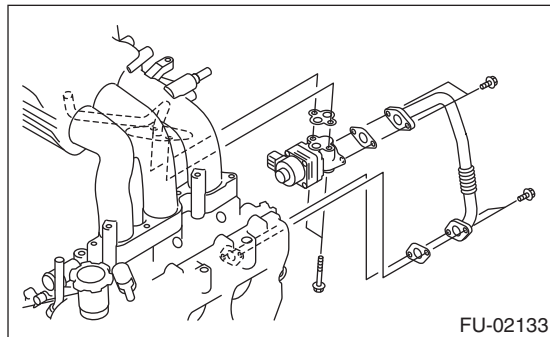
NOTE:

Follow these procedures for removal of the collector cover.

- (1) Lift up the rear side holding two positions (A).
- (2) Lift up the front side holding two positions (B) while moving it in the forward direction of the vehicle.



- 2) Disconnect the ground cable from battery.
- 3) Remove the air intake boot assembly. <Ref. to IN(H6DO)-7, REMOVAL, Air Intake Boot.>
- 4) Remove the starter. <Ref. to SC(H4SO)-9, REMOVAL, Starter.>
- 5) Remove the EGR pipe from EGR valve and cylinder head.
- 6) Remove the EGR valve from intake manifold.



- 7) Disconnect the connector from EGR valve.

B: INSTALLATION

Install in the reverse order of removal.

NOTE:

Use a new gasket.

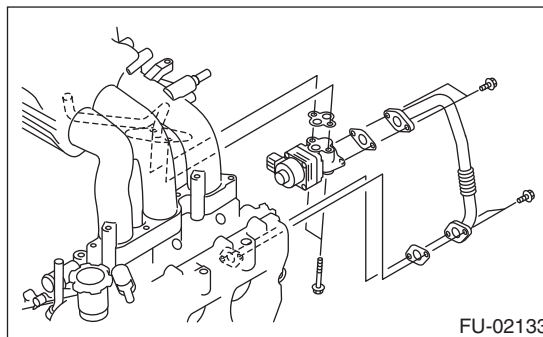
Tightening torque:

EGR valve

19 N·m (1.9 kgf-m, 14.0 ft-lb)

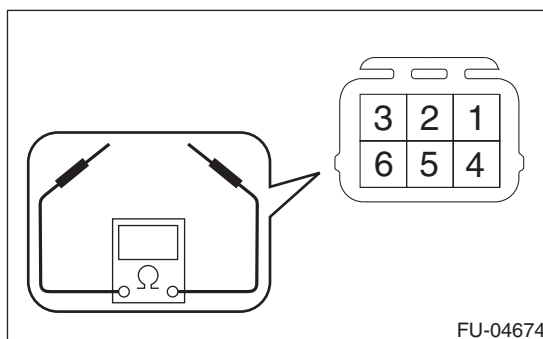
EGR pipe

6.4 N·m (0.7 kgf-m, 4.7 ft-lb)



C: INSPECTION

- 1) Check that the EGR valve has no deformation, cracks or other damages.
- 2) Measure the resistance between EGR valve terminals.



Terminal No.	Standard
2 and 1	22±2 Ω
2 and 3	22±2 Ω
5 and 4	22±2 Ω
5 and 6	22±2 Ω