

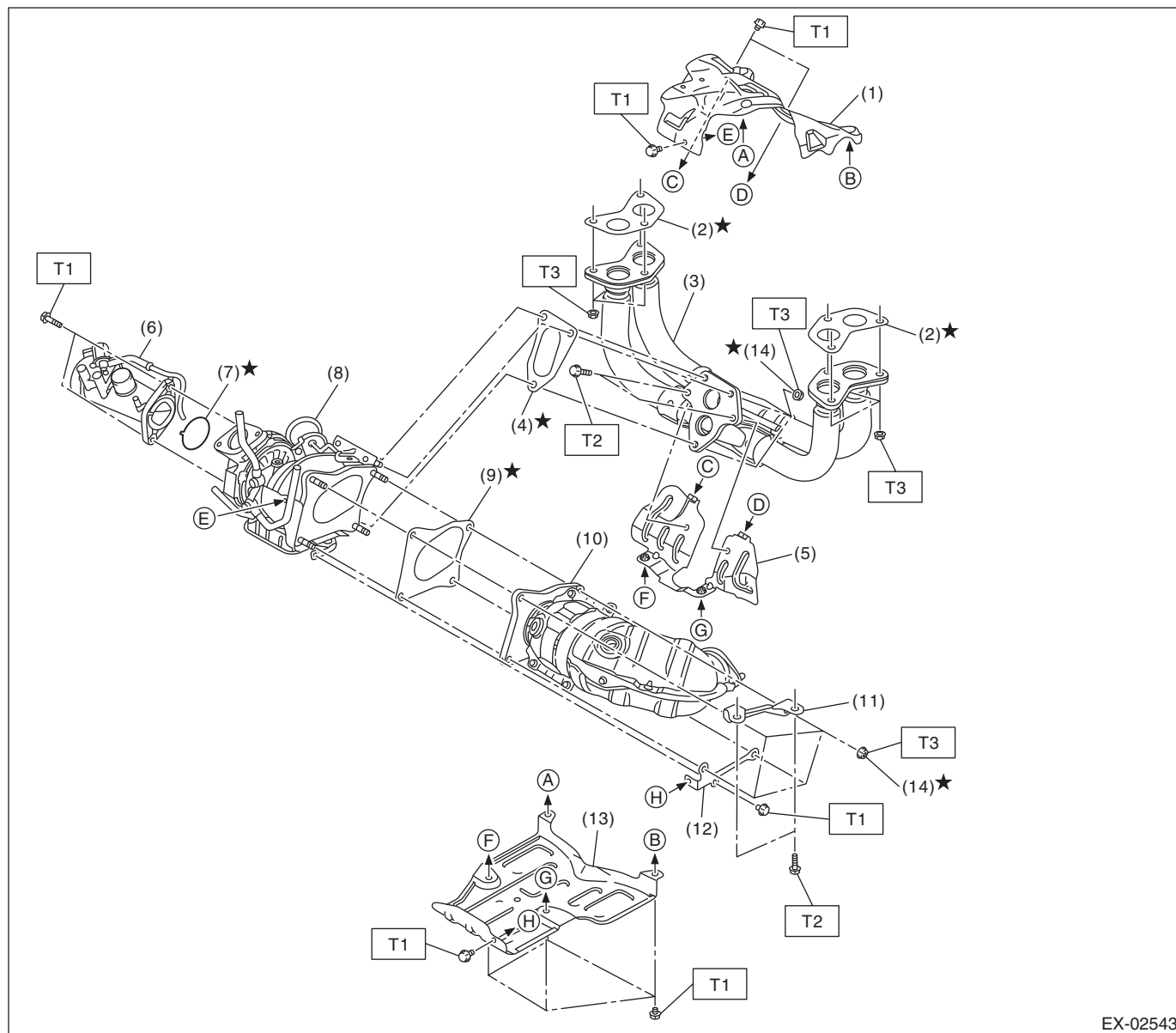
# General Description

## EXHAUST

### 1. General Description

#### A: COMPONENT

#### 1. FRONT EXHAUST PIPE



EX-02543

- |                        |                                  |
|------------------------|----------------------------------|
| (1) Exhaust pipe cover | (8) Turbocharger                 |
| (2) Gasket             | (9) Gasket                       |
| (3) Front exhaust pipe | (10) Center exhaust pipe (Front) |
| (4) Gasket             | (11) Turbocharger upper stay     |
| (5) Exhaust pipe stay  | (12) Turbocharger lower stay     |
| (6) Intake duct        | (13) Engine cover                |
| (7) O-ring             | (14) Self-locking nut            |

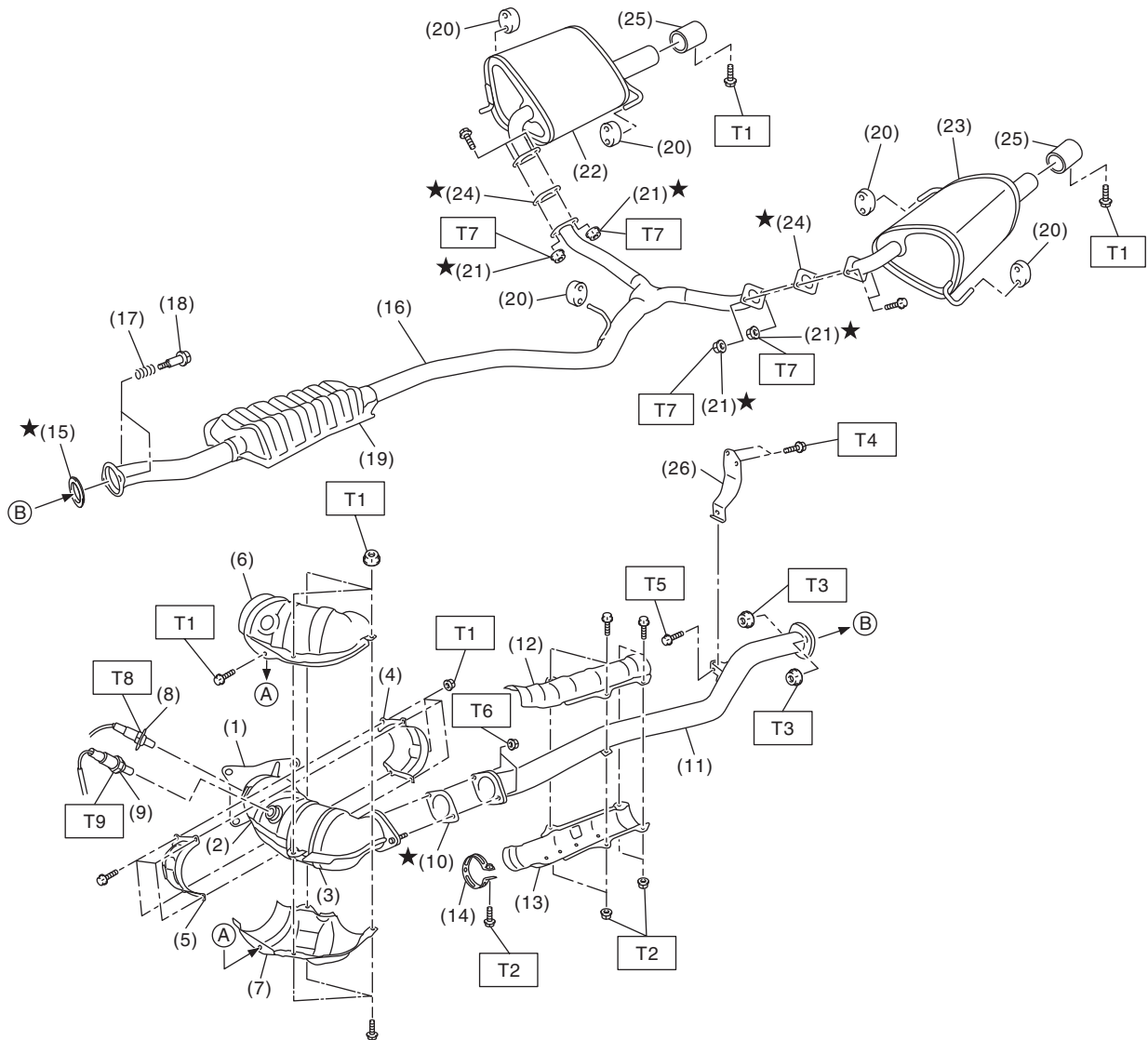
**Tightening torque: N·m (kgf-m, ft-lb)**

**T1: 6.4 (0.7, 4.7)**

**T2: 33 (3.4, 24.3)**

**T3: 42.5 (4.3, 31.3)**

## 2. CENTER AND REAR EXHAUST PIPE, AND MUFFLER



EX-02574

## General Description

### EXHAUST

(1) Center exhaust pipe (Front)	(14) Center exhaust pipe band	<b>Tightening torque: N·m (kgf-m, ft-lb)</b> <b>T1: 7.5 (0.8, 5.5)</b> <b>T2: 13 (1.3, 9.6)</b> <b>T3: 18 (1.8, 13.3)</b> <b>T4: 23 (2.3, 17.0)</b> <b>T5: 35 (3.6, 25.8)</b> <b>T6: 42.5 (4.3, 31.3)</b> <b>T7: 48 (4.9, 35.4)</b> <b>T8: &lt;Ref. to FU(H4DOTC)-53, INSTALLATION, Front Oxygen (A/F) Sensor.&gt;</b> <b>T9: &lt;Ref. to FU(H4DOTC)-55, INSTALLATION, Rear Oxygen Sensor.&gt;</b>
(2) Front catalytic converter	(15) Gasket	
(3) Rear catalytic converter	(16) Rear exhaust pipe	
(4) Center exhaust pipe inner cover (Front)	(17) Spring	
(5) Center exhaust pipe outer cover (Front)	(18) BOLT	
(6) Center exhaust pipe upper cover (Front)	(19) Chamber	
(7) Center exhaust pipe lower cover (Front)	(20) Cushion rubber	
(8) Front oxygen (A/F) sensor	(21) Self-locking nut	
(9) Rear oxygen sensor	(22) Muffler RH	
(10) Gasket	(23) Muffler LH	
(11) Center exhaust pipe (Rear)	(24) Gasket	
(12) Center exhaust pipe upper cover (Rear)	(25) Muffler cutter	
(13) Center exhaust pipe lower cover (Rear)	(26) Hanger bracket	

## B: CAUTION

- Wear appropriate work clothing, including a cap, protective goggles and protective shoes when performing any work.
- Remove contamination including dirt and corrosion before removal, installation or disassembly.
- Keep the disassembled parts in order and protect them from dust and dirt.
- Before removal, installation or disassembly, be sure to clarify the failure. Avoid unnecessary removal, installation, disassembly and replacement.
- Vehicle components are extremely hot after driving. Be wary of receiving burns from heated parts.
- Be sure to tighten fasteners including bolts and nuts to the specified torque.
- Place shop jacks or rigid racks at the specified points.
- Before disconnecting connectors of sensors or units, be sure to disconnect the ground cable from the battery.
- If any fat adheres to the exhaust pipe, wipe it off. Otherwise a fire may happen.

## C: PREPARATION TOOL

### 1. GENERAL TOOL

TOOL NAME	REMARKS
TORX <sup>®</sup> socket E10	Used for removing and installing center exhaust pipe (front).