

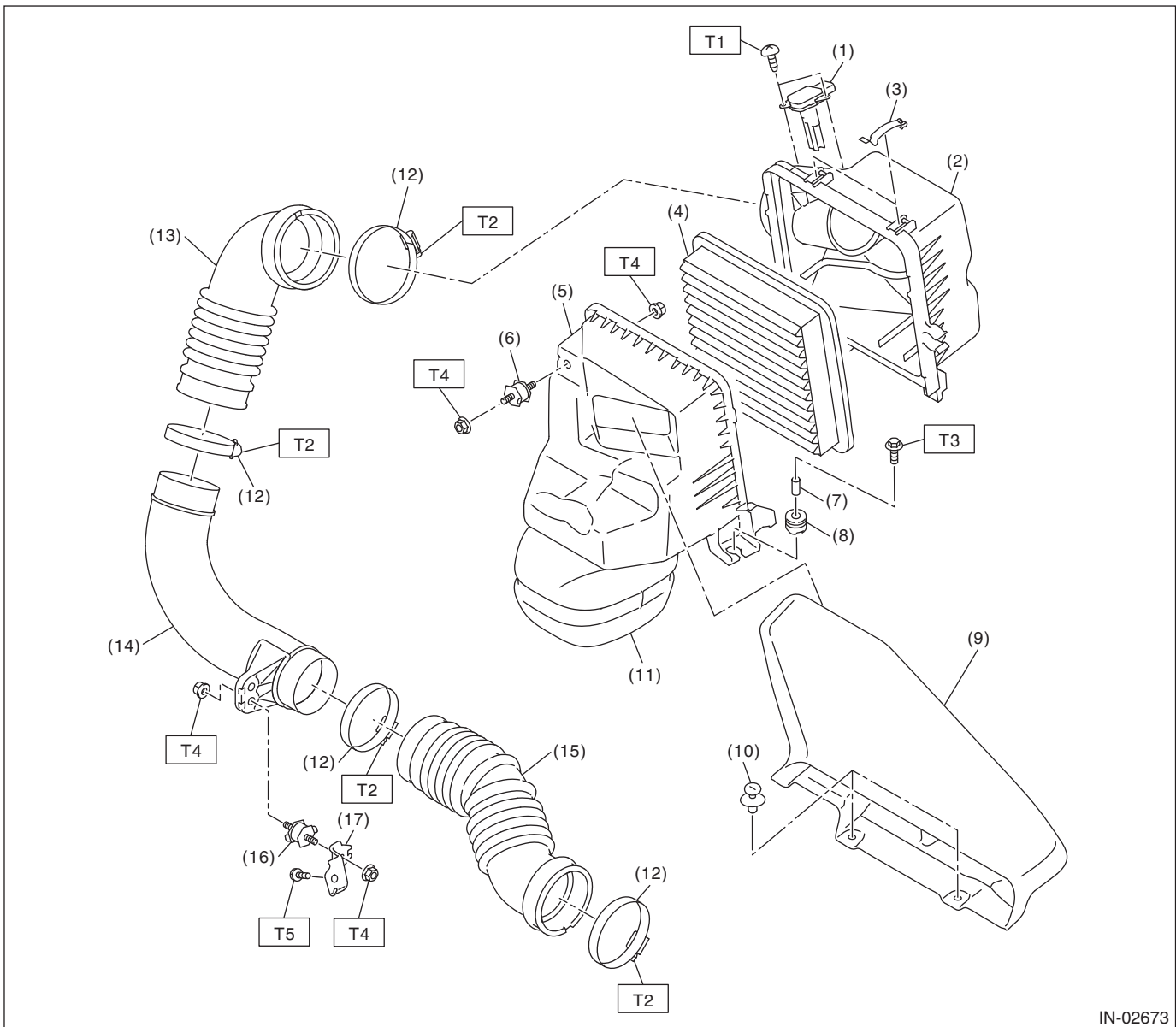
General Description

INTAKE (INDUCTION)

1. General Description

A: COMPONENT

1. AIR CLEANER



IN-02673

- | | | |
|---|------------------------|-------------------|
| (1) Mass air flow and intake air temperature sensor | (9) Air intake duct | (17) Duct bracket |
| (2) Air cleaner case (rear) | (10) Clip | |
| (3) Clip | (11) Resonator chamber | |
| (4) Air cleaner element | (12) Clamp | |
| (5) Air cleaner case (front) | (13) Air intake boot A | |
| (6) Cushion | (14) Turbo duct | |
| (7) Spacer | (15) Air intake boot B | |
| (8) Cushion | (16) Cushion | |

Tightening torque: N·m (kgf-m, ft-lb)

T1: 1 (0.1, 0.7)

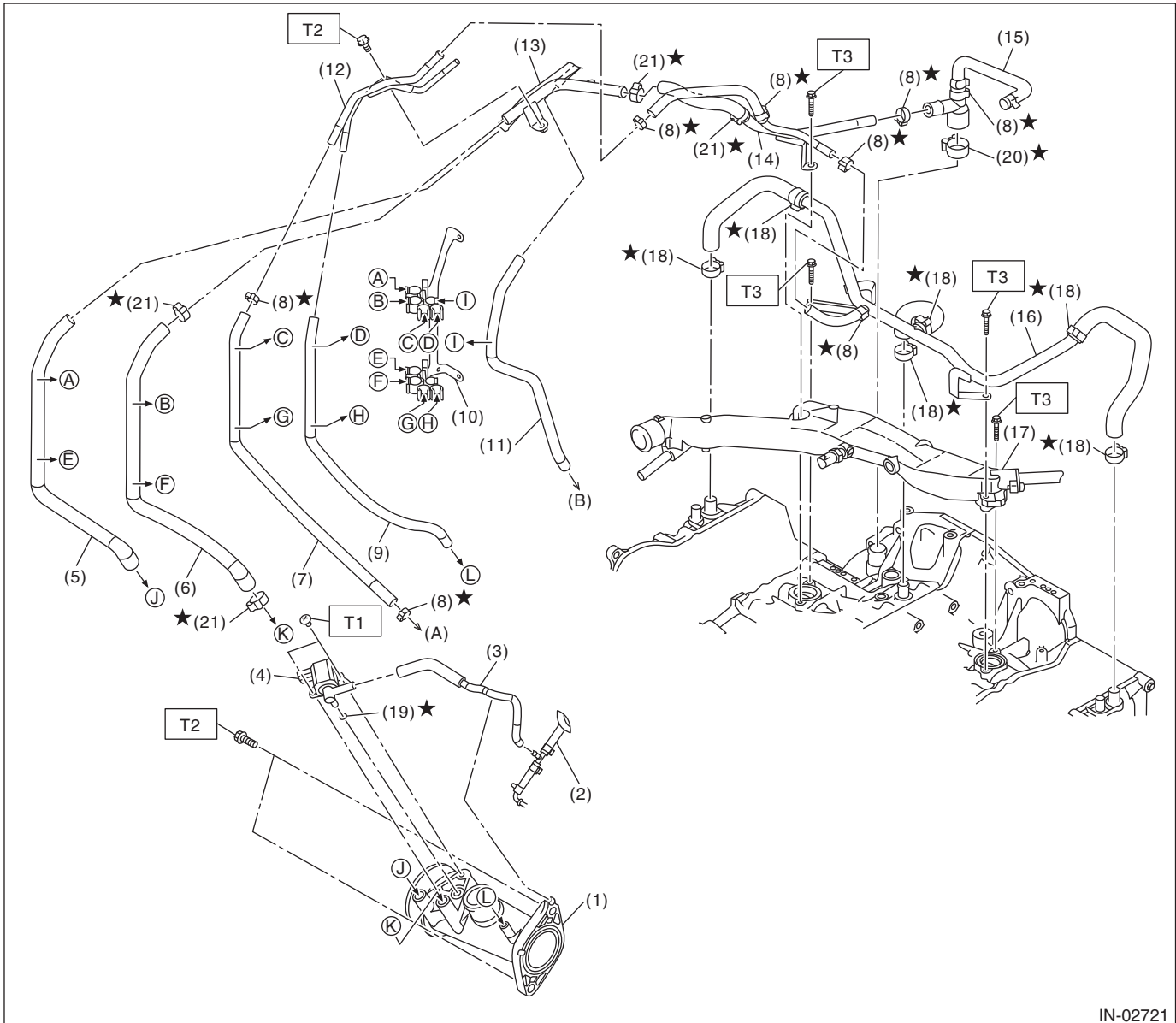
T2: 2.5 (0.3, 1.8)

T3: 6 (0.6, 4.4)

T4: 7.5 (0.8, 5.5)

T5: 18 (0.8, 13.3)

2. INTAKE DUCT



IN-02721

- | | |
|--------------------------------------|--------------------------|
| (A) To Oil catch tank | (B) To air by-pass valve |
| (1) Intake duct | (10) Hose clip stay ASSY |
| (2) Boost hose ASSY | (11) Vacuum control hose |
| (3) Air control hose | (12) Blow-by pipe |
| (4) Wastegate control solenoid valve | (13) PCV pipe |
| (5) Vacuum hose A | (14) Blow-by pipe ASSY A |
| (6) Vacuum hose B | (15) PCV hose ASSY |
| (7) Vacuum hose C | (16) Blow-by pipe ASSY B |
| (8) Clamp | (17) Water pipe ASSY |
| (9) Vacuum hose D | (18) Clamp |

(19) O-ring

(20) Clamp

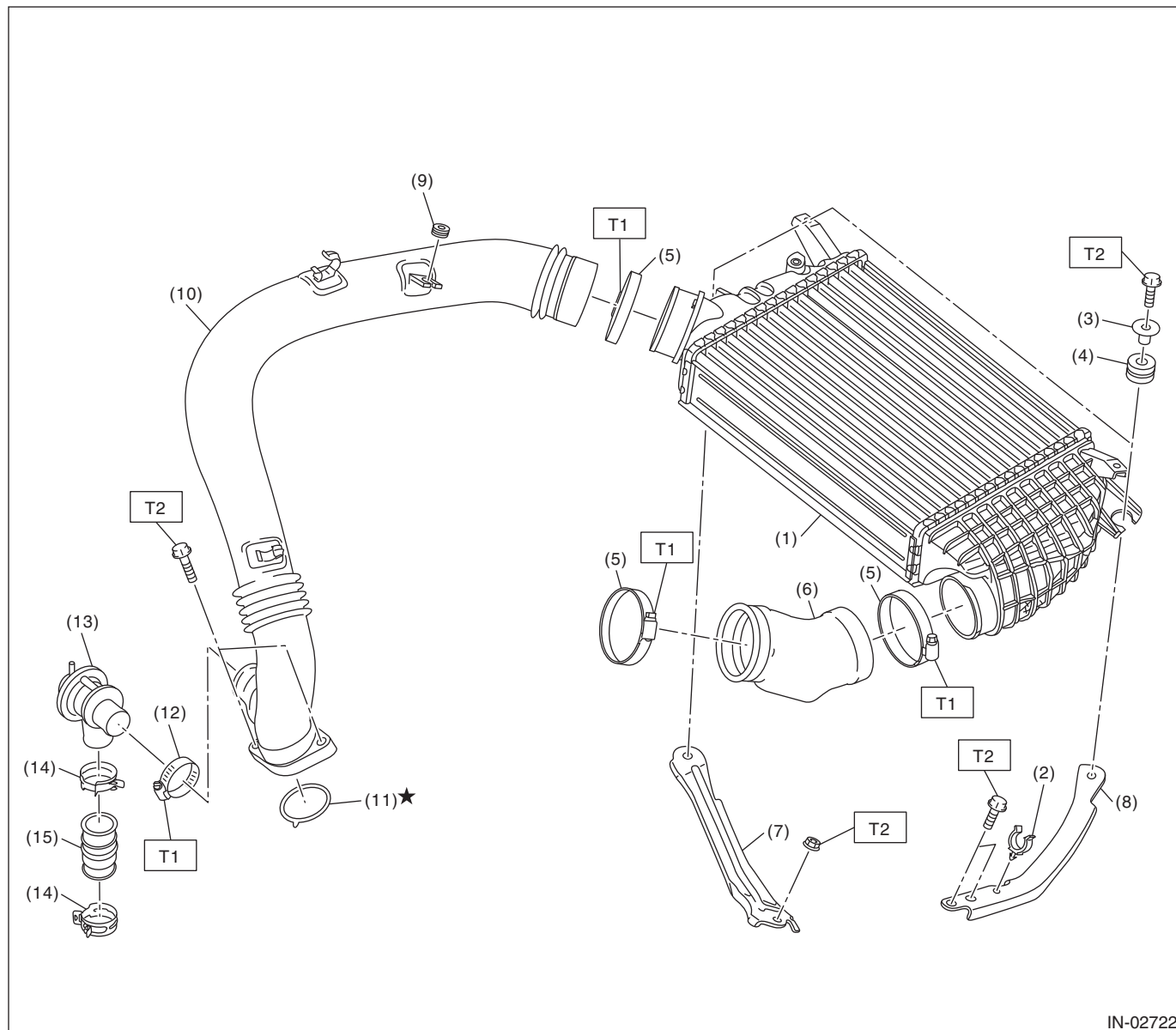
(21) Clamp

Tightening torque: N·m (kgf-m, ft-lb)**T1: 1 (0.1, 0.7)****T2: 6.4 (0.7, 4.7)****T3: 6.5 (0.7, 4.8)**

General Description

INTAKE (INDUCTION)

3. INTERCOOLER



IN-02722

- (1) Intercooler
- (2) Clip
- (3) SPACER
- (4) Cushion
- (5) Clamp
- (6) Intake duct A
- (7) Intercooler stay RH

- (8) Intercooler stay LH
- (9) Cushion
- (10) Intake duct B
- (11) O-ring
- (12) Clamp
- (13) Air by-pass valve
- (14) Clip

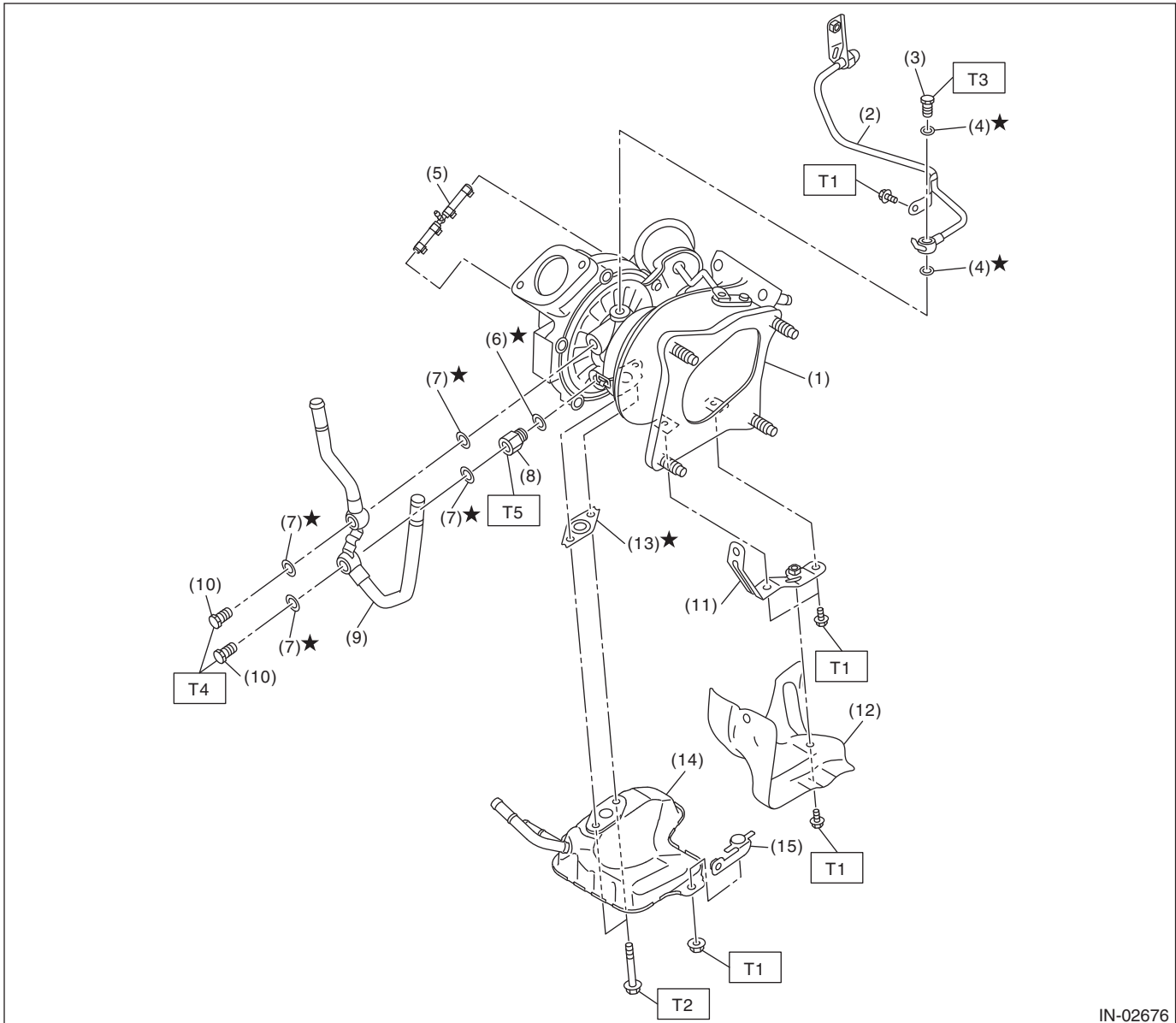
- (15) Intake boot

Tightening torque: N·m (kgf-m, ft-lb)

T1: 3 (0.3, 2.2)

T2: 16 (1.6, 11.8)

4. TURBOCHARGER



IN-02676

- | | |
|--------------------------|--------------------------|
| (1) Turbocharger | (9) Water pipe |
| (2) Oil inlet pipe | (10) Union bolt |
| (3) Union bolt | (11) Exhaust stay |
| (4) Gasket | (12) Exhaust cover |
| (5) Boost hose ASSY | (13) Gasket |
| (6) Gasket | (14) Oil catch tank |
| (7) Gasket | (15) Oil catch tank stay |
| (8) Water pipe connector | |

Tightening torque: N·m (kgf-m, ft-lb)
T1: 6.4 (0.7, 4.7)**T2: 10.5 (1.1, 7.7)****T3: 16 (1.6, 11.8)****T4: 31.5 (3.2, 23.2)****T5: 36.5 (3.7, 26.9)**

General Description

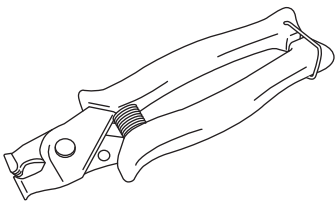
INTAKE (INDUCTION)

B: CAUTION

- Wear appropriate work clothing, including a cap, protective goggles and protective shoes when performing any work.
- Remove contamination including dirt and corrosion before removal, installation or disassembly.
- Keep the disassembled parts in order and protect them from dust and dirt.
- Before removal, installation or disassembly, be sure to clarify the failure. Avoid unnecessary removal, installation, disassembly and replacement.
- Vehicle components are extremely hot after driving. Be wary of receiving burns from heated parts.
- Be sure to tighten fasteners including bolts and nuts to the specified torque.
- Place shop jacks or rigid racks at the specified points.
- Before disconnecting connectors of sensors or units, be sure to disconnect the ground cable from the battery.

C: PREPARATION TOOL

1. SPECIAL TOOL

ILLUSTRATION	TOOL NUMBER	DESCRIPTION	REMARKS
 ST18353AA000	18353AA000	CLAMP PLIERS	<ul style="list-style-type: none">• Used for removing and installing the PCV hose.• This tool is made by the French company CAILLAU. (code) 54.0.000.205 To make it easier to obtain, it has been provided with a tool number.

2. GENERAL TOOL

TOOL NAME	REMARKS
Mighty Vac	Used for checking waste gate actuator and air by-pass valve.