

14.Oil Flow Control Solenoid Valve

A: REMOVAL

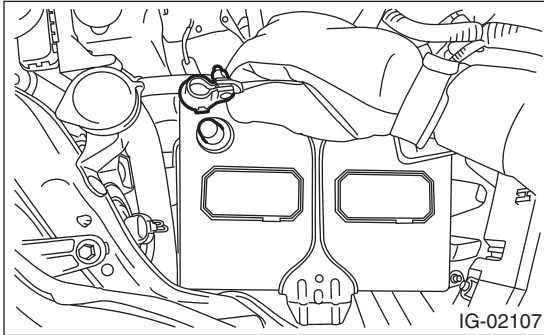
1. INTAKE SIDE

Oil flow control solenoid valve is a unit with front camshaft cap.

Refer to "Camshaft" for the removal procedure.
<Ref. to ME(H4DOTC)-62, REMOVAL, Camshaft.>

2. EXHAUST SIDE

1) Disconnect the ground cable from battery.

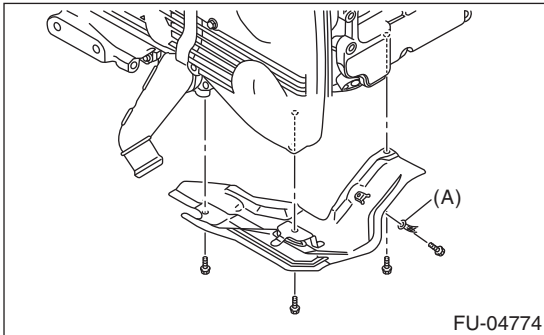


2) Lift up the vehicle.

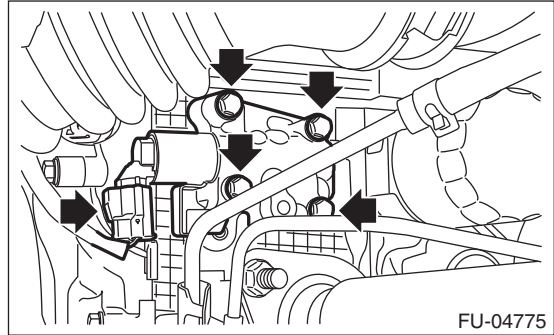
3) Remove the under cover. <Ref. to EI-35, REMOVAL, Front Under Cover.>

4) Remove the center exhaust pipe. (LH side only)
<Ref. to EX(H4DOTC)-12, REMOVAL, Center Exhaust Pipe.>

5) Remove ground cable (A) from the engine harness cover, and remove the engine harness cover from the engine. (LH side only)



6) Disconnect the connector from the oil flow control solenoid valve, and remove the oil flow control solenoid valve from the cylinder head.



B: INSTALLATION

1. INTAKE SIDE

Refer to "Camshaft" for installation procedure.
<Ref. to ME(H4DOTC)-65, INSTALLATION, Camshaft.>

2. EXHAUST SIDE

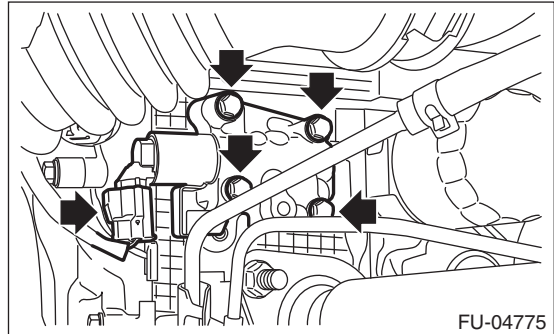
Install in the reverse order of removal.

NOTE:

Use a new gasket.

Tightening torque:

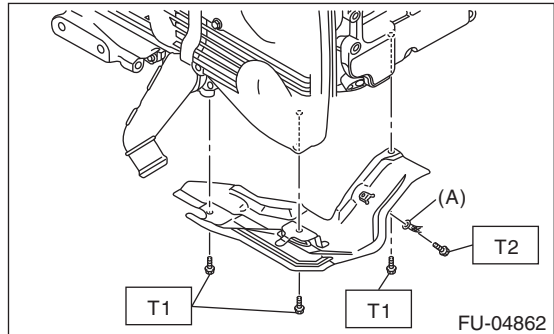
10 N·m (1.0 kgf-m, 7.4 ft-lb)



Tightening torque:

T1: 6.4 N·m (0.7 kgf-m, 4.7 ft-lb)

T2: 7 N·m (0.7 kgf-m, 5.2 ft-lb)



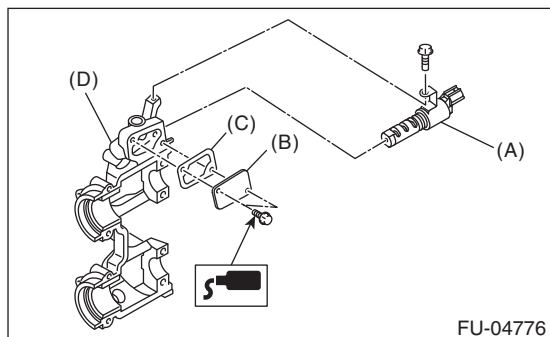
Oil Flow Control Solenoid Valve

FUEL INJECTION (FUEL SYSTEMS)

C: DISASSEMBLY

1. INTAKE SIDE

- 1) Remove the two bolts which secure the oil return cover, and remove the oil return cover and gasket.
- 2) Remove the bolt which secures the oil flow control solenoid valve and remove the oil flow control solenoid valve.



- (A) Oil flow control solenoid valve
- (B) Oil return cover
- (C) Gasket
- (D) Front camshaft cap

2. EXHAUST SIDE

The oil flow control solenoid valve on exhaust side cannot be disassembled.

D: ASSEMBLY

1. INTAKE SIDE

- 1) Install the oil flow control solenoid valve.

Tightening torque:

6.4 N·m (0.7 kgf-m, 4.7 ft-lb)

- 2) Apply liquid gasket to the two bolts which secure the oil return cover.

Liquid gasket:

THREE BOND 1324 (Part No. 004403042) or equivalent

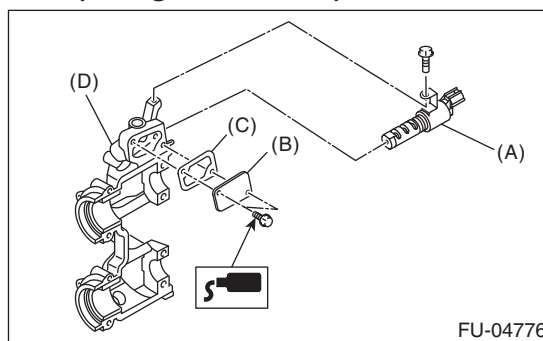
- 3) Install the oil return cover and gasket.

NOTE:

Use a new gasket.

Tightening torque:

9 N·m (0.9 kgf-m, 6.6 ft-lb)



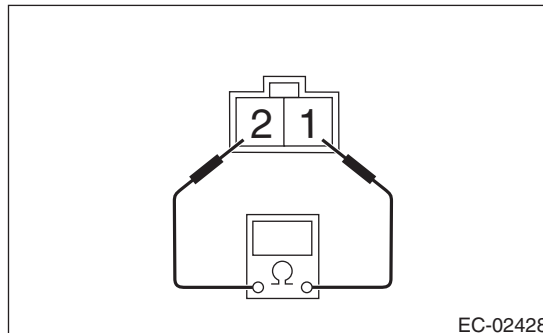
- (A) Oil flow control solenoid valve
- (B) Oil return cover
- (C) Gasket
- (D) Front camshaft cap

2. EXHAUST SIDE

The oil flow control solenoid valve on exhaust side cannot be disassembled.

E: INSPECTION

- 1) Check that the oil flow control solenoid valve has no deformation, cracks or other damages.
- 2) Measure the resistance between the oil flow control solenoid valve terminals.



Terminal No.	Standard
1 and 2	$7.4 \pm 0.5 \Omega$ (when 20°C (68°F))