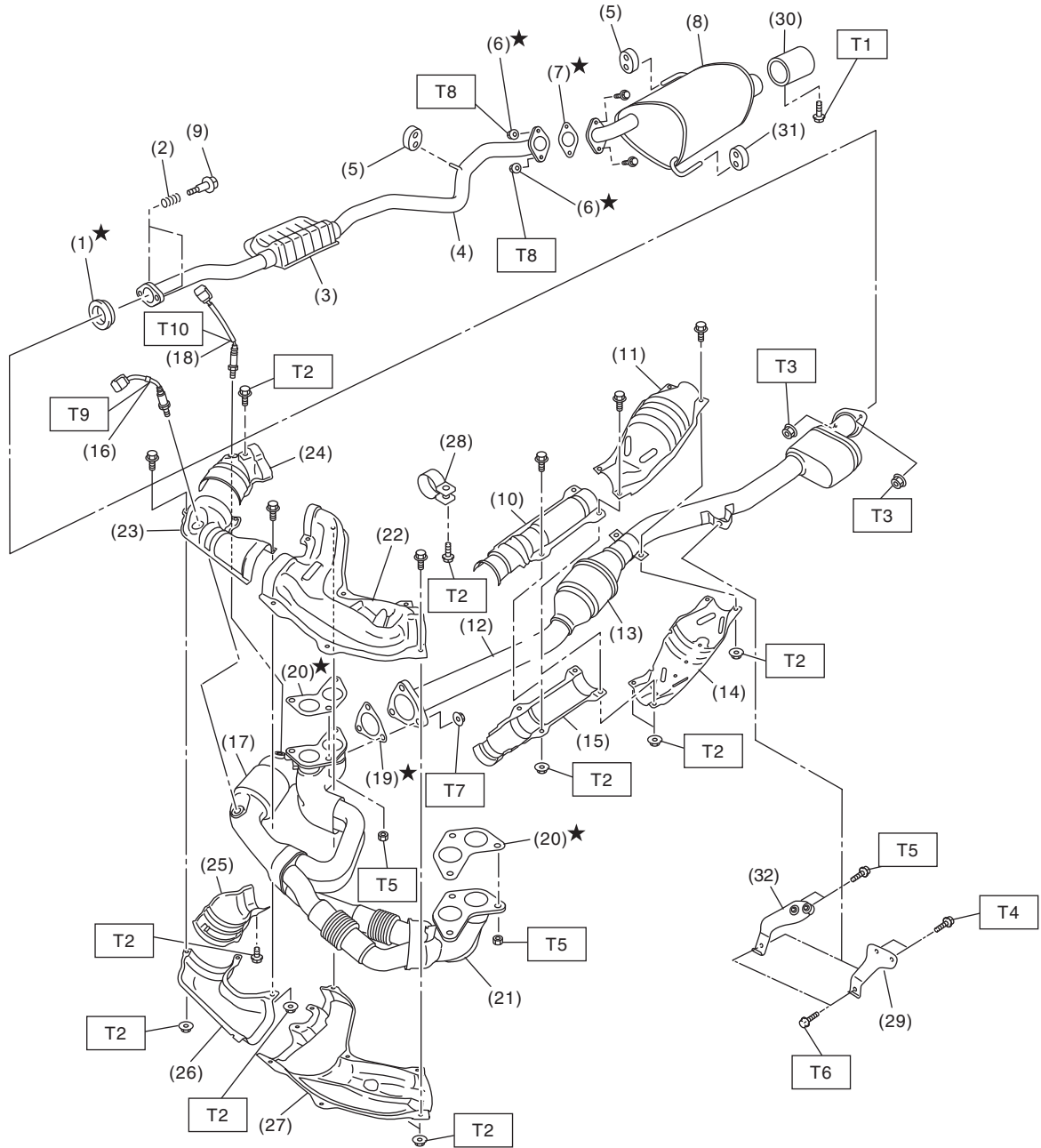


General Description

EXHAUST

1. General Description

A: COMPONENT



EX-02597

General Description

EXHAUST

(1) Gasket	(16) Front oxygen (A/F) sensor	(31) Cushion rubber (with protrusion)
(2) Spring	(17) Front catalytic converter	(32) Hanger bracket (MT model)
(3) Chamber	(18) Rear oxygen sensor	
(4) Rear exhaust pipe	(19) Gasket	Tightening torque: N·m (kgf-m, ft-lb)
(5) Cushion rubber (without protrusion)	(20) Gasket	T1: 7.5 (0.8, 5.5)
(6) Self-locking nut	(21) Front exhaust pipe	T2: 13 (1.3, 9.6)
(7) Gasket	(22) Front exhaust pipe upper cover LH	T3: 18 (1.8, 13.3)
(8) Muffler	(23) Front exhaust pipe upper cover RH	T4: 23 (2.3, 17.0)
(9) BOLT	(24) Front catalytic converter upper cover	T5: 30 (3.1, 22.1)
(10) Center exhaust pipe front upper cover	(25) Front catalytic converter lower cover	T6: 35 (3.6, 25.8)
(11) Rear catalytic converter upper cover	(26) Front exhaust pipe lower cover RH	T7: 40 (4.1, 29.5)
(12) Center exhaust pipe	(27) Front exhaust pipe lower cover LH	T8: 48 (4.9, 35.4)
(13) Rear catalytic converter	(28) Band	T9: <Ref. to FU(H4SO)-35, INSTALLATION, Front Oxygen (A/F) Sensor.>
(14) Rear catalytic converter lower cover	(29) Hanger bracket (CVT model)	T10: <Ref. to FU(H4SO)-37, INSTALLATION, Rear Oxygen Sensor.>
(15) Center exhaust pipe front lower cover	(30) Ornamental muffler tip (Models with ornamental muffler tips)	

B: CAUTION

- Wear appropriate work clothing, including a cap, protective goggles and protective shoes when performing any work.
- Remove contamination including dirt and corrosion before removal, installation or disassembly.
- Keep the disassembled parts in order and protect them from dust and dirt.
- Before removal, installation or disassembly, be sure to clarify the failure. Avoid unnecessary removal, installation, disassembly and replacement.
- Vehicle components are extremely hot after driving. Be wary of receiving burns from heated parts.
- Be sure to tighten fasteners including bolts and nuts to the specified torque.
- Place shop jacks or rigid racks at the specified points.
- Before disconnecting connectors of sensors or units, be sure to disconnect the ground cable from the battery.
- If any fat adheres to the exhaust pipe, wipe it off. Otherwise a fire may happen.