

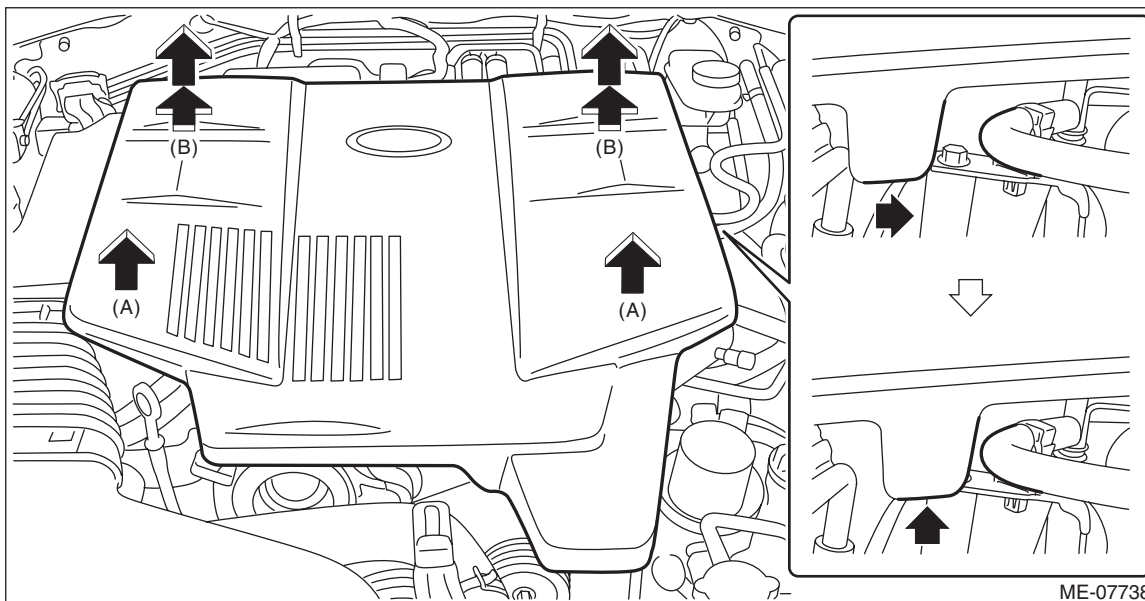
### 6. Intake Duct

#### A: REMOVAL

- 1) Turn the ignition switch to OFF.
- 2) Remove the collector cover.
  - (1) Carefully pull up the front of collector cover at two positions (A).
  - (2) Carefully pull up the rear of collector cover at two positions (B) while moving it backward.

#### NOTE:

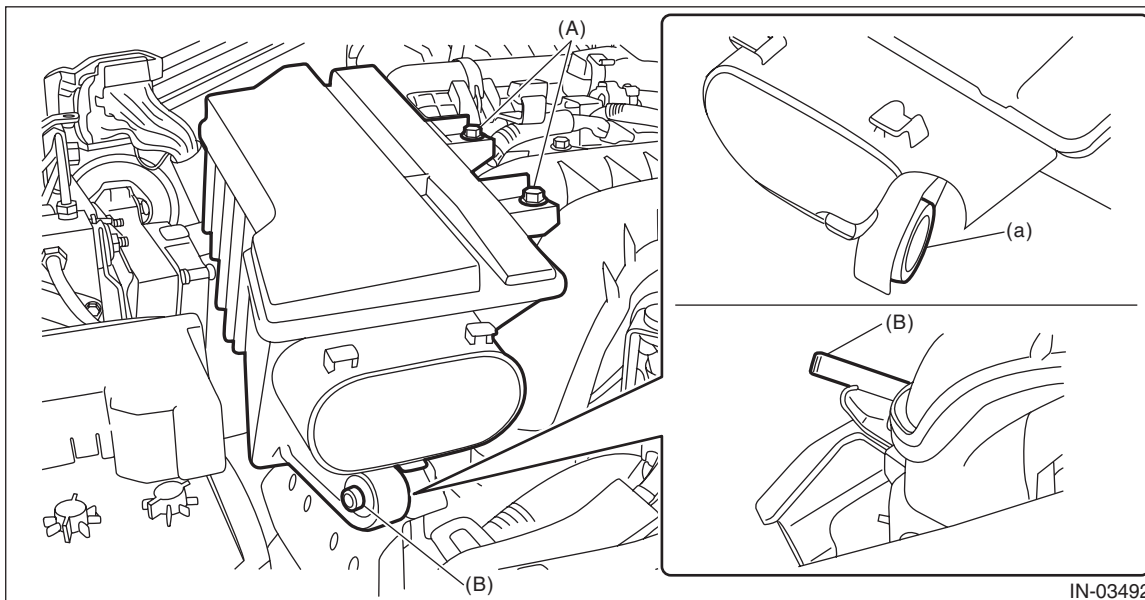
Be careful not to contact the fuel delivery tube when moving the collector cover rearward.



- 3) Remove the air intake boot No. 1. <Ref. to IN(H4DO(HEV))-10, AIR INTAKE BOOT NO. 1, REMOVAL, Air Intake Boot.>
- 4) Remove the bolt (A) which holds the intake duct to the intake manifold.
- 5) Remove the intake duct from the air cleaner case front and the protrusion (B) on the intake manifold protector RH.

#### NOTE:

When removing the intake duct, check the cushion (a) of the intake duct for peel-off or misalignment.

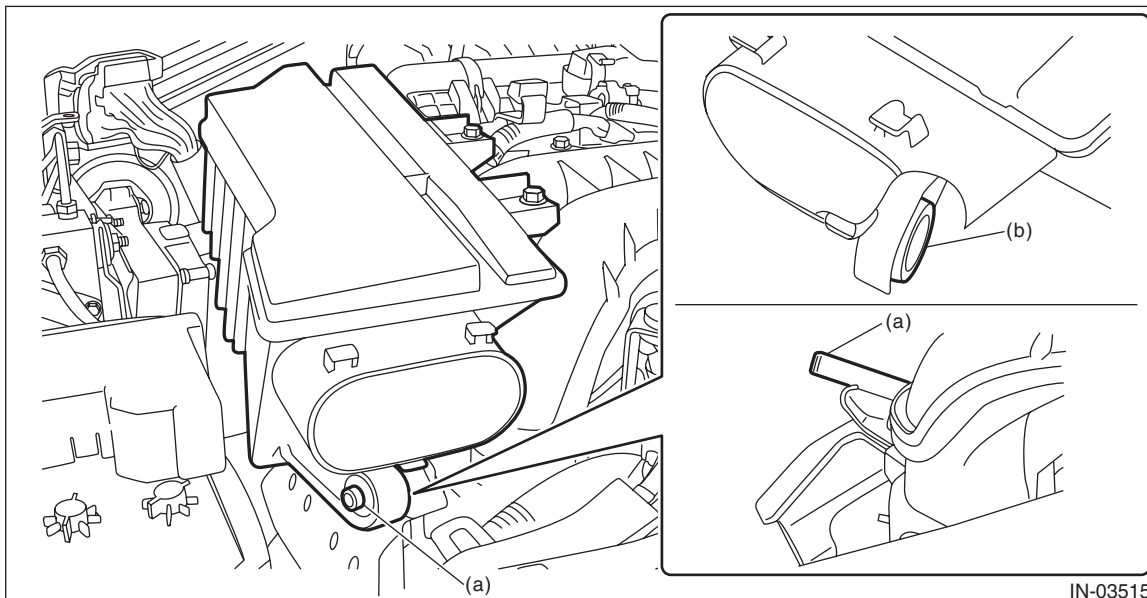


## B: INSTALLATION

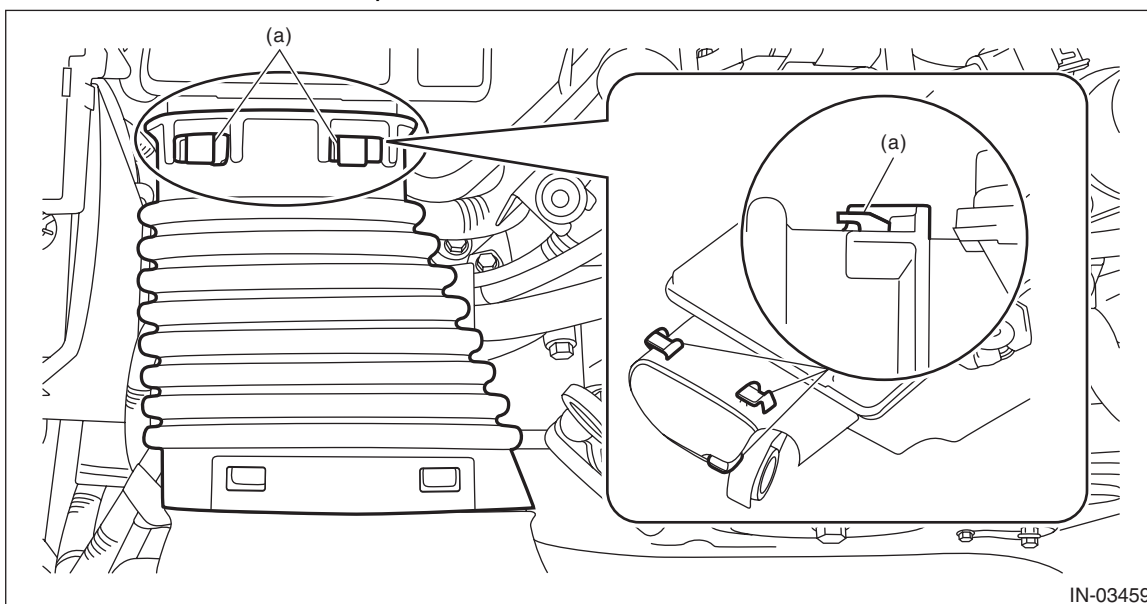
Install in the reverse order of removal.

### NOTE:

- Check that the intake duct is firmly inserted into the protrusion (a) on the intake manifold protector RH.
- Check the cushion (b) for peel-off.



- Make sure that the air intake boot No. 1 is securely installed to the protrusion (a) on the intake duct.
- Check the air intake boot No. 1 for peel-off.



### Tightening torque:

**6.4 N·m (0.7 kgf-m, 4.7 ft-lb)**

## C: INSPECTION

- 1) Check that the intake duct has no deformation, cracks or other damages.
- 2) Inspect that no foreign objects are mixed in the intake duct.